

**NOTES:**

DO NOT SCALE DRAWINGS;

F.D. FOUNTAIN INC. IS NOT RESPONSIBLE FOR ACCURACY OF BASE INFORMATION

REFER TO CIVIL ENGINEERING DRAWINGS FOR GRADING & SITE SERVICING INFORMATION

THE CONTRACTOR IS RESPONSIBLE FOR CONFIRMING SITE CONDITIONS AND REPORTING ANY DISCREPANCIES TO THE LANDSCAPE ARCHITECT;

THE CONTRACTOR IS RESPONSIBLE FOR CONFIRMING EXACT LOCATIONS OF ALL UNDERGROUND SERVICES AND OBTAINING CLEARANCE FROM ALL APPLICABLE UTILITIES. PROPOSED WORKS FOUND TO BE IN CONFLICT WITH UNDERGROUND SERVICES MAY BE ADJUSTED AT THE DIRECTION OF THE LANDSCAPE ARCHITECT;

LANDSCAPE ELEMENTS SHOWN ARE SUBJECT TO THE FINAL LOCATION OF UNDERGROUND SERVICES AND UTILITIES;

DO NOT INSTALL TREES ON PROPERTY / LOT LINES OR WITHIN DRAINAGE EASEMENTS.

PERFORM WORK IN ACCORDANCE WITH DETAILS AND SPECIFICATIONS;

ALL PLANT MATERIAL SHALL BE No. 1 NURSERY STOCK AND SHALL MEET OR EXCEED THE SPECIFICATION OF THE Canadian Standards for Nursery Stock, AS PUBLISHED BY THE Canadian Nursery Landscape Association;

SPECIES SUBSTITUTIONS ARE NOT PERMITTED WITHOUT PRIOR WRITTEN APPROVAL OF THE LANDSCAPE ARCHITECT;

FENCING TO BE INSTALLED AT 100mm OFFSET FROM PROPERTY LINES AT SIDE AND REAR YARDS AS INDICATED:

ALL UN-PAVED SURFACES TO RECEIVE 135mm DEPTH TOPSOIL & SOD.

**CITY OF OTTAWA STANDARDS FOR TREE PLANTING:**

MAINTAIN A MINIMUM DISTANCE OF 7.5m FROM ALL BUILDINGS:

MAINTAIN A MINIMUM DISTANCE OF 3.0m FROM ALL HYDRO TRANSFORMERS.

MAINTAIN A MINIMUM DISTANCE OF 2.5m FROM THE CURB FOR DECIDUOUS TREES AND 4.5m FOR CONIFEROUS TREES;

MAINTAIN A MINIMUM DISTANCE OF 1.5m FOR DECIDUOUS (4.5m FOR CONIFERS) FROM ANY SIDEWALK OR PRIVATE WALKWAY;

MAINTAIN A MINIMUM DISTANCE OF 2.5m FROM FIRE HYDRANTS AND NO PLANTING IN FRONT OF HYDRANTS;

MAINTAIN A MINIMUM DISTANCE OF 1.5m FROM ALL UNDERGROUND SERVICES;

MAINTAIN A MINIMUM DISTANCE OF 1.0m FROM ALL BELL AND CABLE BOXES;

MAINTAIN A MINIMUM DISTANCE OF 1.2m FROM ALL DRIVEWAYS;

**MAINTAIN A MINIMUM DISTANCE OF 10.0 FROM BUS SHELTERS**

**IMPORTANT NOTICE FOR CONTRACTOR:**

THE CITY OF OTTAWA REQUIRES A Certificate of Completion (F1) Landscape Works TO BE SUBMITTED AND SEALED BY THE LANDSCAPE ARCHITECT. CONTRACTORS ARE RESPONSIBLE FOR FAMILIARIZING THEMSELVES WITH THE REQUIREMENTS OF THIS PROCESS AND PROVIDING SUFFICIENT NOTICE TO THE LANDSCAPE ARCHITECT TO CONDUCT SITE REVIEWS **DURING INSTALLATION** OF TREES. THE 1 YEAR WARRANTY PERIOD SHALL NOT COMMENCE UNTIL THE LANDSCAPE ARCHITECT HAS SUBMITTED THE F1 Certificate.

PRIOR TO INSTALLATION OF TREES, THE DEVELOPER WILL CONTACT THE PLANNING AND GROWTH MANAGEMENT AND FORESTRY SERVICES TO REVIEW THE SPECIES AND LOCATION OF TREES.

**TE-1**  
FF=80.14  
UF=77.08  
205A 205B  
206A 206B  
201A 201B  
202A 202B  
203A 203B  
204A 204B

**TE-2**  
FF=80.14  
UF=77.08  
210A 210B  
211A 211B  
207A 207B  
208A 208B

**TE-3**  
FF=80.19  
UF=77.13  
215A 215B  
216A 216B  
217A 217B  
213A 213B  
214A 214B

**TE-4**  
FF=80.44  
UF=77.38  
220A 220B  
221A 221B  
222A 222B  
223A 223B  
224A 224B  
225A 225B  
226A 226B  
227A 227B  
228A 228B  
229A 229B  
230A 230B

**Landscaping and Infrastructure:**  
 - EX: 450mm Ø S  
 - MA (Manhole)  
 - PC (Paved Area)  
 - FS (Fence)  
 - CB (Curb)  
 - AG (Access Gate)  
 - PP (Planting Pit)  
 - SA (Slope Area)  
 - PS (Paved Surface)  
 - PG (Planting Grid)  
 - AC (Access Control)  
 - RETAINING WALL PER CIVIL  
 - POST AND RAIL FENCE  
 - AMENITY AREA  
 - FIRE ROUTE  
 - SUBJECT TO EASEMENT  
 - P.I.N. 0451989  
 - OC 471553 & 471757  
 - N47°33'40"E 43.02'

RETAINING WALL PER CIVIL

## POST AND RAIL FENCE

1	<b>LANDSCAPE PLAN</b>
L1	<b>1:250</b>

**PRELIMINARY**  
**NOT FOR CONSTRUCTION**

 **f.d. fountain**  
LANDSCAPE ARCHITECTURE  
& URBAN DESIGN

3-1735 Courtwood Crescent  
Ottawa, Ontario  
K2C 3J2 CANADA

t 613.216.2934  
f 613.216.2938  
w [fdofountain.com](http://fdofountain.com)

north / le nord

| stamp / le cachet

project / proje

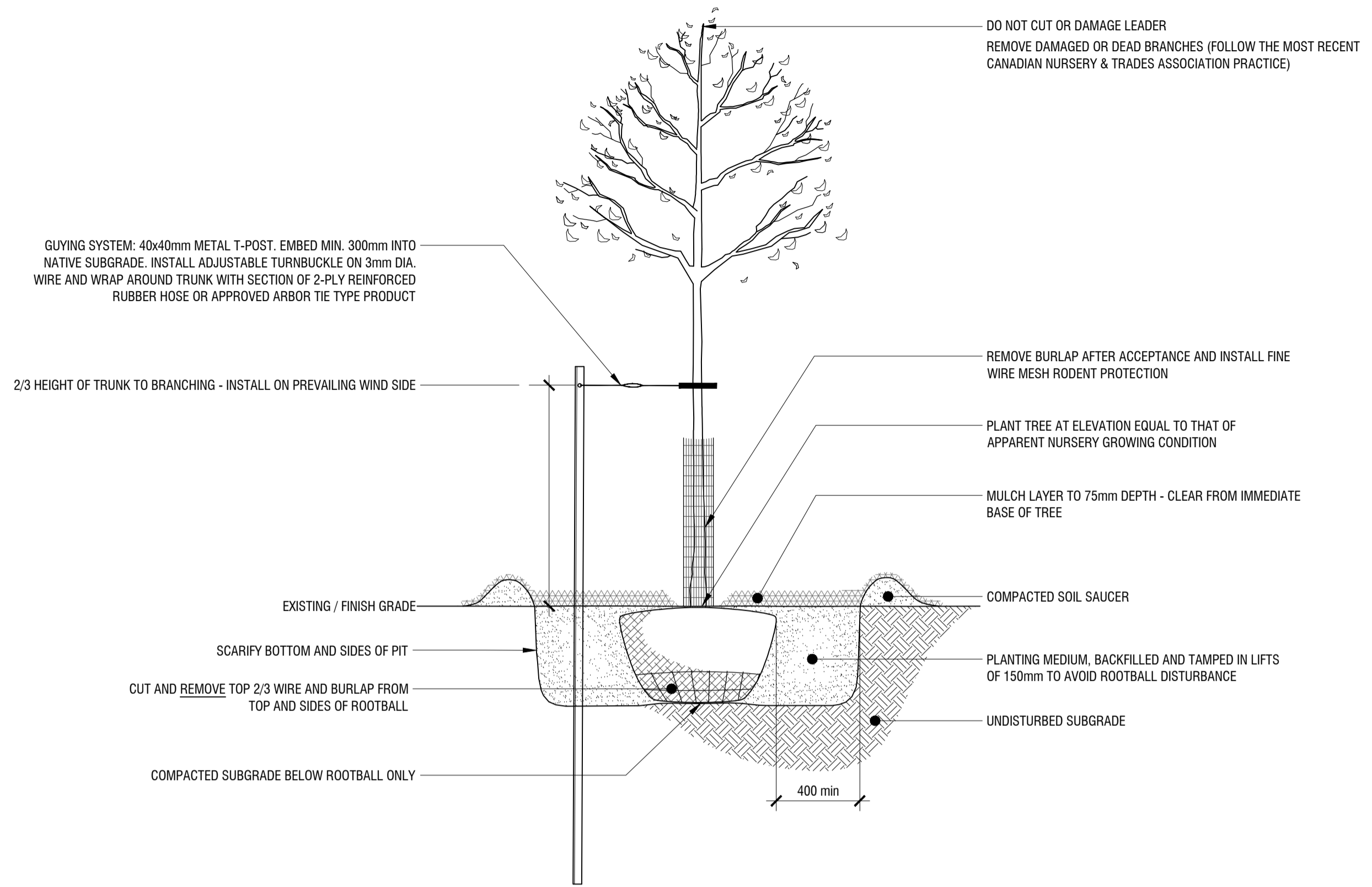
# MORGAN'S CREEK PHASE 1

drawing / dessin

## LANDSCAPE PLAN

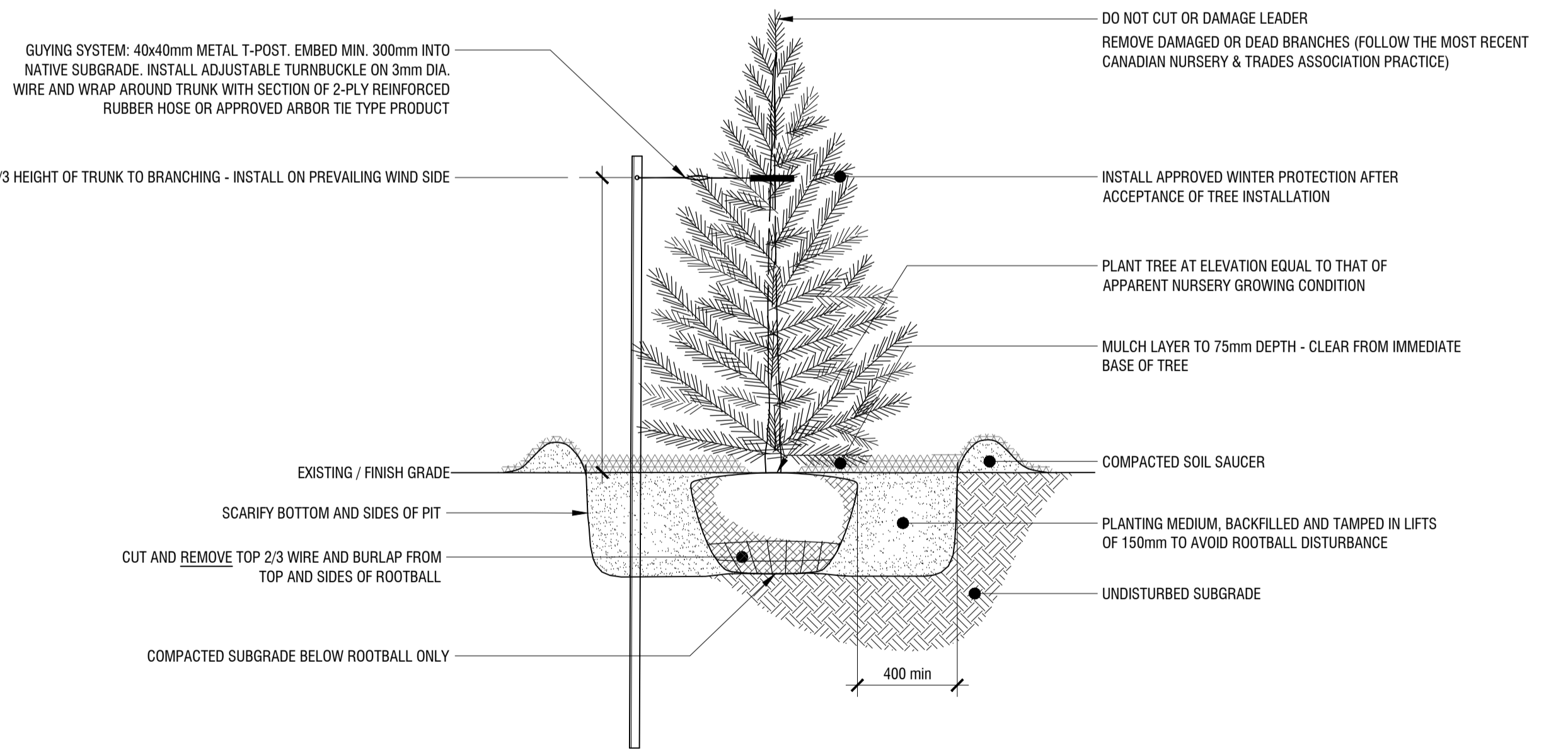
designed / conçu <b>SM</b>	drawn / dessiné <b>SM</b>	reviewed / examiné <b>DF</b>
date <b>DEC. 2018</b>	project number / No. du projet <b>C 11-42</b>	
drawing number / No. du dessin		

L1 of 2



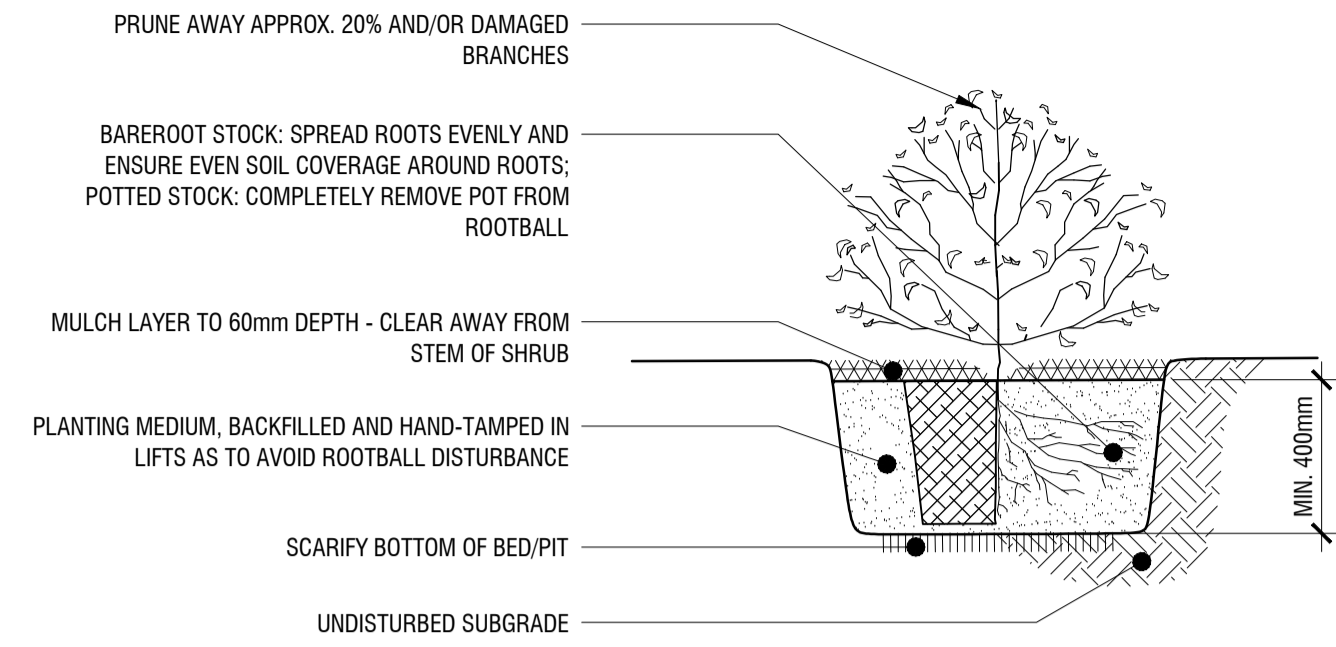
## 1 DECIDUOUS TREE PLANTING

### L2 n.t.s.



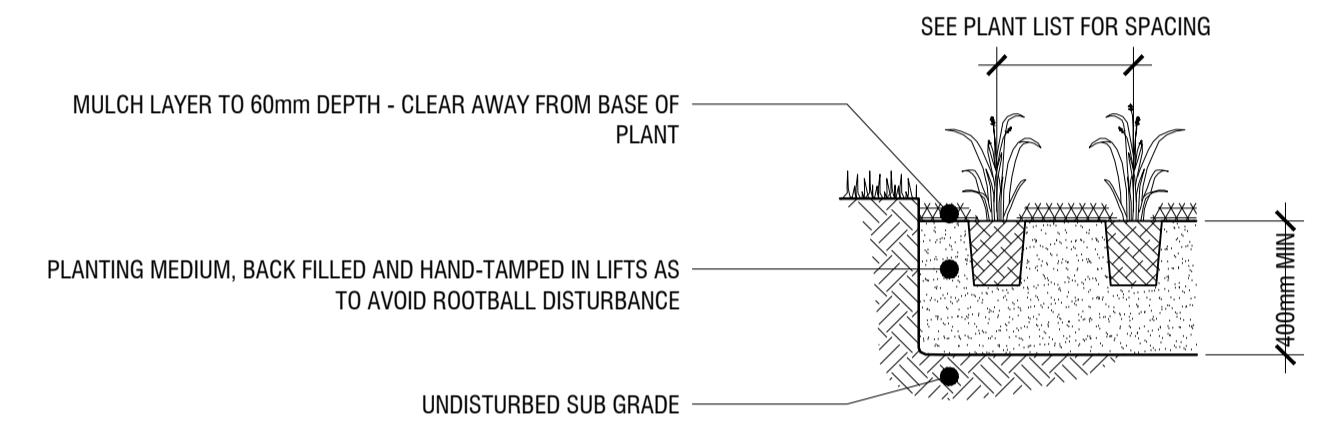
## 2 CONIFEROUS TREE PLANTING

### L2 n.t.s.



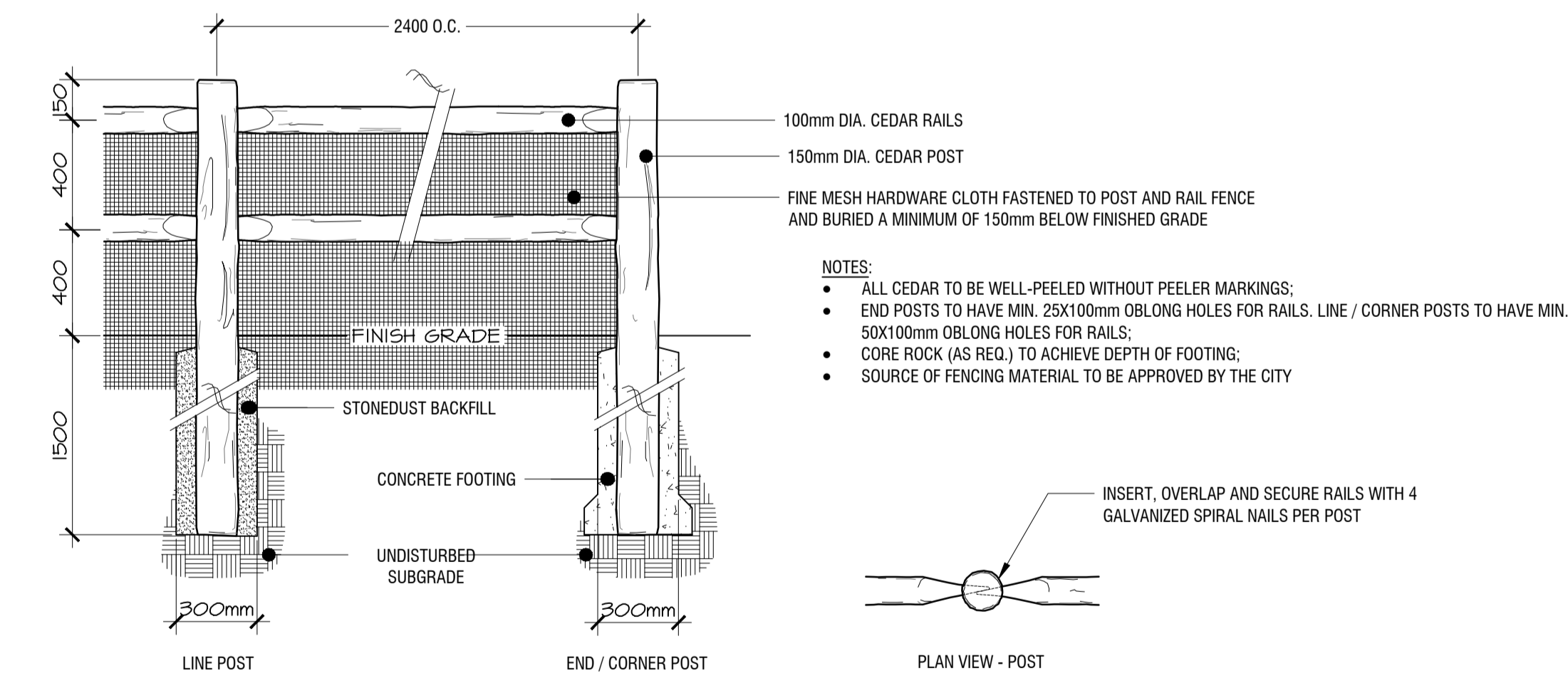
## 3 SHRUB PLANTING

### L2 n.t.s.



## 4 PERENNIAL PLANTING

### L2 n.t.s.



## 5 POST AND RAIL WILDLIFE FENCE

### L2 n.t.s.

PRELIMINARY  
NOT FOR CONSTRUCTION

Copyright Reserved  
The Copyrights to all designs and drawings are the property of f.d. fountain landscape architecture.  
Unauthorized reproduction or use is forbidden. DO NOT SCALE DRAWING

Copyright réservés  
Les droits d'auteur à tous les modèles et dessins sont la propriété de f.d. fountain landscape architecture.  
Reproduction ou utilisation non autorisée est interdite. NE PAS L'ÉCHELLE DE DESSIN

Client / Client



legend / légende

1	issue for submission	12/21/2018
0	issue for Client review	12/21/2018
rev'n	description / la description	mm/dd/yyyy

**f.d. fountain**  
LANDSCAPE ARCHITECTURE  
& URBAN DESIGN

3-1735 Courtwood Crescent  
Ottawa, Ontario  
K2C 3J2 CANADA

t 613.216.2934  
f 613.216.2938  
w fdfountain.com

north / le nord	stamp / le cachet

project / projet

## MORGAN'S CREEK PHASE 1

drawing / dessin

## CONSTRUCTION DETAILS

designed / conçu	drawn / dessiné	reviewed / examiné
<b>SM</b>	<b>SM</b>	<b>DF</b>
date	project number / No. du projet	
<b>DEC. 2018</b>	<b>C 11-42</b>	
drawing number / No. du dessin		