

# MARK AVENUE

## SCHEDULE OF EXISTING TREES

(Inventory conducted May 1, 2018)

CODE	SPECIES	SIZE (dia in cm)	CONDITION / TREATMENT / REMARKS
1	Marionna Maple	27	poor / remove / hazardous
2	Marionna Maple	20	poor / remove / hazardous
3	Marionna Maple	20	fair / retain / protect
4	Marionna Maple	20	fair / retain / protect
5	Marionna Maple	20	fair / retain / protect
6	Norway Maple	38/26	fair / retain / adjacent property
7	Norway Maple	22	fair / retain / adjacent property
8	Norway Maple	23	good / retain / adjacent property
9	Norway Maple	25	good / retain / adjacent property
10	Norway Maple	13	fair / retain / adjacent property
11	Norway Maple	12	good / retain / adjacent property
12	Norway Maple	17	good / retain / adjacent property
13	Norway Maple	23	fair / retain / City property
14	Bur Oak	16	fair / retain / City property
15	Bur Oak	15	good / retain / City property

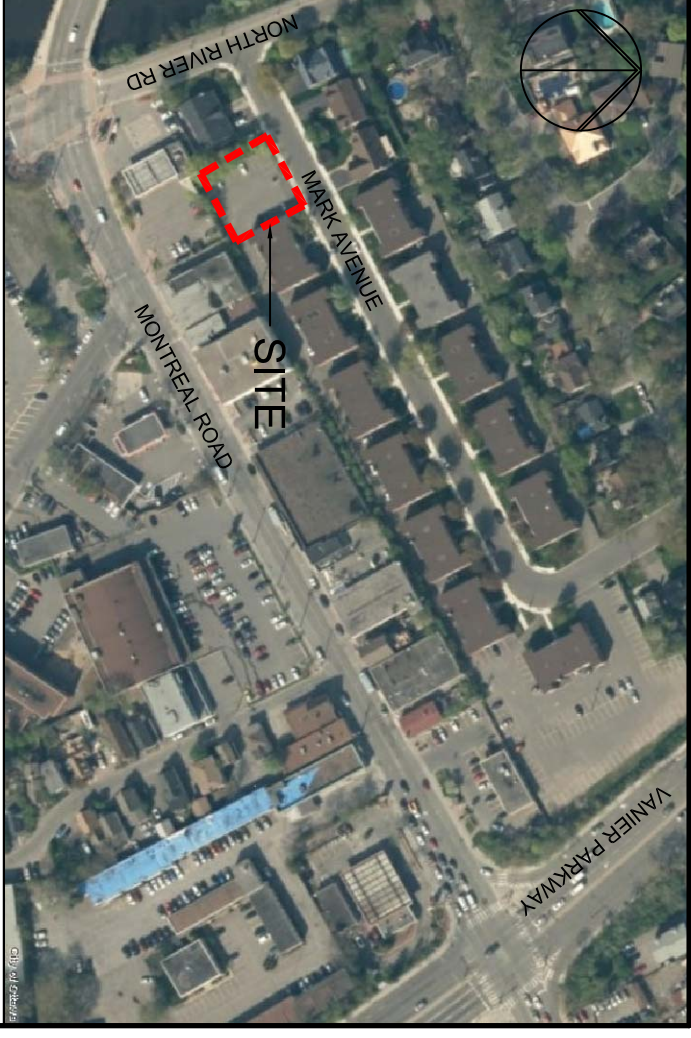
## PLANT MATERIAL SCHEDULE

CODE	BOTANICAL NAME	COMMON NAME	QTY.	SIZE	REMARKS
<b>DECIDUOUS TREES</b>					
AC	AELANCHER CANADENSIS	SHADELOW SERVICEBERRY	1	50cm cal	B&B single stem
BR	AMERINDOXA VIBRY	WYOM SILK/SPIRACEAE TREE LILAC	1	50cm cal	B&B single stem
SL	AMERINDOXA VIBRY	WYOM SILK/SPIRACEAE TREE LILAC	1	50cm cal	B&B single stem
<b>CONIFEROUS TREES</b>					
AB	ABIES BALSAMEA	BALSAM FIR	7	180 cm ht	B&B
AF	ABIES FRASERI	EASTERN WHITE CEDAR	1	180 cm ht	B&B
ACZ	AELANCHER CANADENSIS	SHADELOW SERVICEBERRY	1	150cm ht	B&B multi-stem
AM	ARONIA WELANCOCCARIA	BLACK CHERRYBERRY	9	50cm ht	poiled, 100cm dc
AM	ARONIA WELANCOCCARIA	BLACK CHERRYBERRY	9	50cm ht	B&B multi-stem
HA	HONONIA VIBRISCIENS	ANABELLE HYDRANGEA	5	50cm ht	poiled, 100cm dc
HA	HONONIA VIBRISCIENS	ANABELLE HYDRANGEA	5	50cm ht	poiled, 100cm dc
HPG	HYDRANGEA PANICULATA	PEE GEE HYDRANGEA	9	50cm ht	poiled, 100cm dc
HO	HYDRANGEA PANICULATA	COMMON NINEBARK	8	50cm ht	poiled, 100cm dc
SS	SORBARIA SORBIFOLIA	FALSE SPIRÆA	6	50cm ht	poiled, 100cm dc
SS	SORBARIA SORBIFOLIA	FALSE SPIRÆA	6	50cm ht	poiled, 100cm dc
VF	VERGELA FLORIDA POLKA	FAKSA WERBELA	5	50cm ht	poiled, 100cm dc
VF	VERGELA FLORIDA POLKA	FAKSA WERBELA	5	50cm ht	poiled, 100cm dc
DA	DAPHNE GENKYGONATA	COMPACT ANDROMEDA JUNIPER	10	50cm spr	poiled, 100cm dc
DA	DAPHNE GENKYGONATA	COMPACT ANDROMEDA JUNIPER	10	50cm spr	poiled, 100cm dc
<b>PERENNIALS</b>					
HE	HEBERICOLAUS tyronum	Hyperion DAYLILY	24	15 cm pot	plant 60cm dc
HE	HEBERICOLAUS tyronum	Hyperion DAYLILY	24	15 cm pot	plant 60cm dc
EG	ERGOGRASS	ERG GRASS	20	15 cm pot	plant 125cm dc
OR	ORNAMENTAL GRASSES	INDIAN GRASS	16	15 cm pot	plant 75cm dc

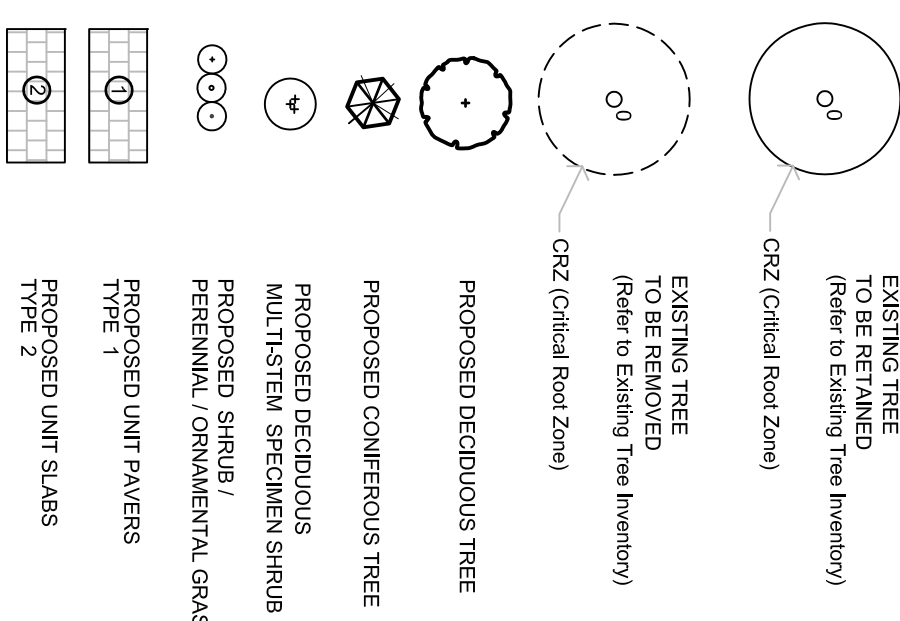
## GENERAL NOTES

- This drawing shall be read in conjunction with all relevant documents, including Engineering and related Drawings and Specifications.
- Refer to Engineering Drawings for Grading and Servicing.
- Contractor shall provide the location(s) of all existing trees and utility lines, and shall be responsible for adequate protection from damage during construction.
- Plant material shall be No. 1 Grade and shall comply with the Metro-Guide Specifications For Nursery Stock (latest edition), published by the Canadian Nursery Trades Association.
- Plant Material locations are Schematic / Approximate only. Contractor shall stake out locations on site prior to work.
- Contractor shall guarantee all plant material for a period of one (1) full year from the date of final acceptance.
- Plant Material substitutions shall not be permitted without the approval of the Consultant.
- Plant Material substitutions shall not be permitted without the approval of the Consultant.
- Plant Material substitutions shall not be permitted without the approval of the Consultant.
- Plant Material substitutions shall not be permitted without the approval of the Consultant.
- Plant Material substitutions shall not be permitted without the approval of the Consultant.
- Plant Material substitutions shall not be permitted without the approval of the Consultant.
- Plant Material substitutions shall not be permitted without the approval of the Consultant.
- Plant Material substitutions shall not be permitted without the approval of the Consultant.
- Plant Material substitutions shall not be permitted without the approval of the Consultant.

## SITE LOCATION



## LEGEND / SYMBOL



## NOT FOR CONSTRUCTION

NO.	DATE	REVISION
1	MAY 17/18	ISSUE FOR REVIEW / COORDINATION
2	MAY 24/18	ISSUE FOR REVIEW / COORDINATION
3	JUNE 20/18	ISSUE FOR REVIEW / COORDINATION
4	JULY 23/18	ISSUE FOR SPA
5	NOV 26/18	PER CITY COMMENTS (1)

**LEVSTEK CONSULTANTS**  
LANDSCAPE ARCHITECTS

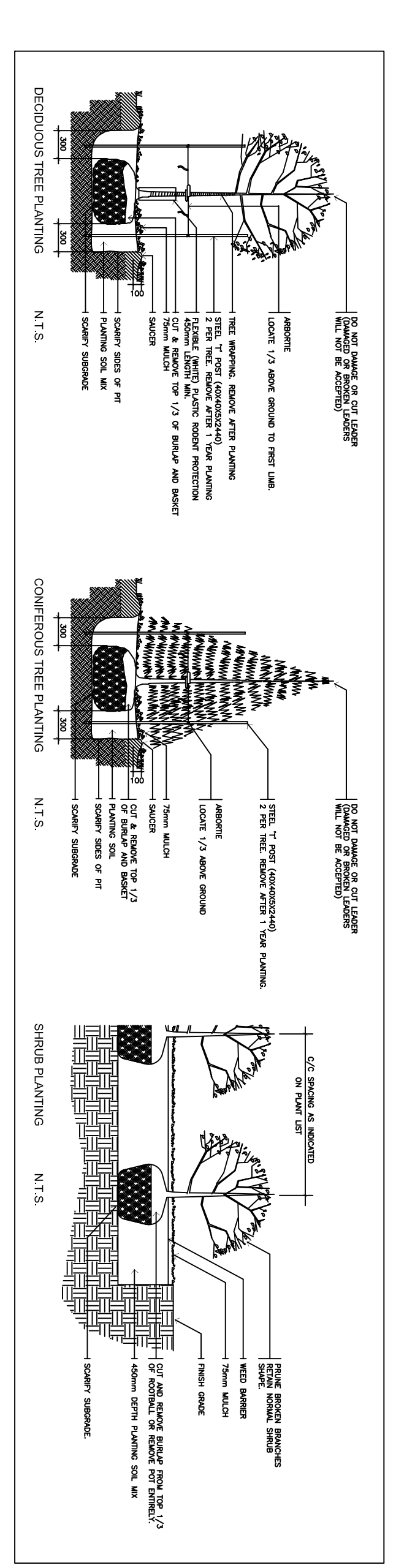
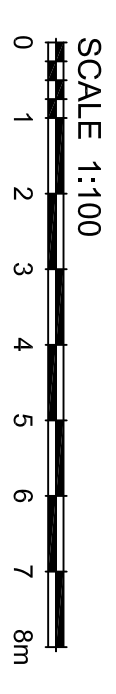
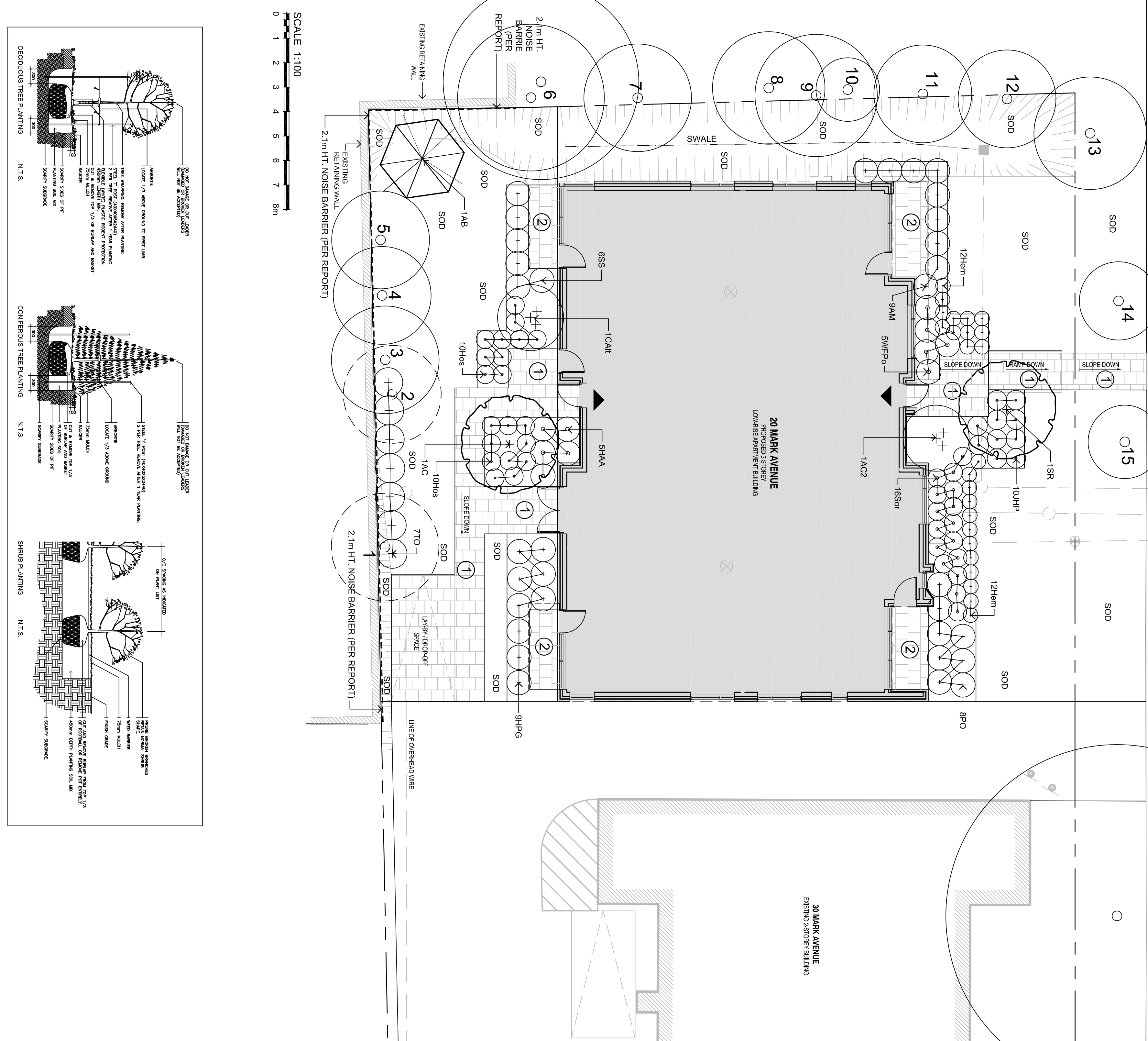
5421 HIGH CRESTWAY - OTTAWA - ONTARIO - K2A 2W8  
613 - 826 - 0818

**MANOR PARK MANAGEMENT**

**20 MARK AVENUE**

**LANDSCAPE PLAN**

DATE: MAY 2018  
DRAWING NO.: L1.01



**NOT FOR CONSTRUCTION**

Contractor shall stake and verify all dimensions on site and report all errors and/or omissions to the Consultant.

Work to be done in accordance with all applicable codes and by-laws.

Do not scale Drawing.

Copyright reserved. This Drawing is the exclusive property of Levstek Consultants Inc. and shall not be used without consent.

Consultant: **LEVSTEK CONSULTANTS**

Client: **MANOR PARK MANAGEMENT**

Project: **20 MARK AVENUE**

Drawing Title: **LANDSCAPE PLAN**

Drawn: **MGB** Date: **MAY 2018** Drawing No.: **L1.01**

Scale: **1:100** Project No.: **1143**