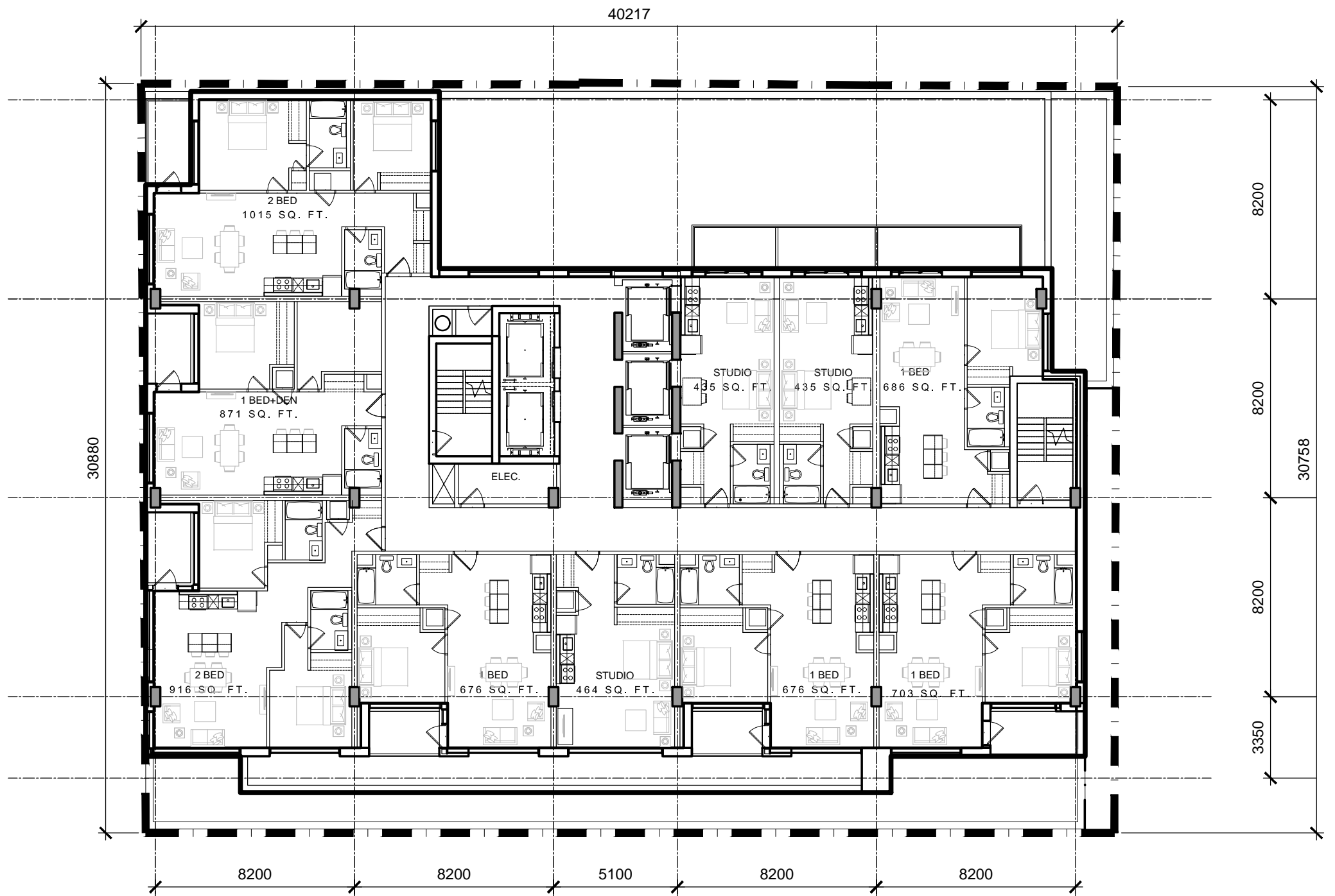


4th to 16th FLOOR PLAN  
HOTEL UNITS

FLOOR AREA 9618 SQ. FT.  
Common Area 2,117 sq. ft.  
Leasable Area 7,504 sq. ft.

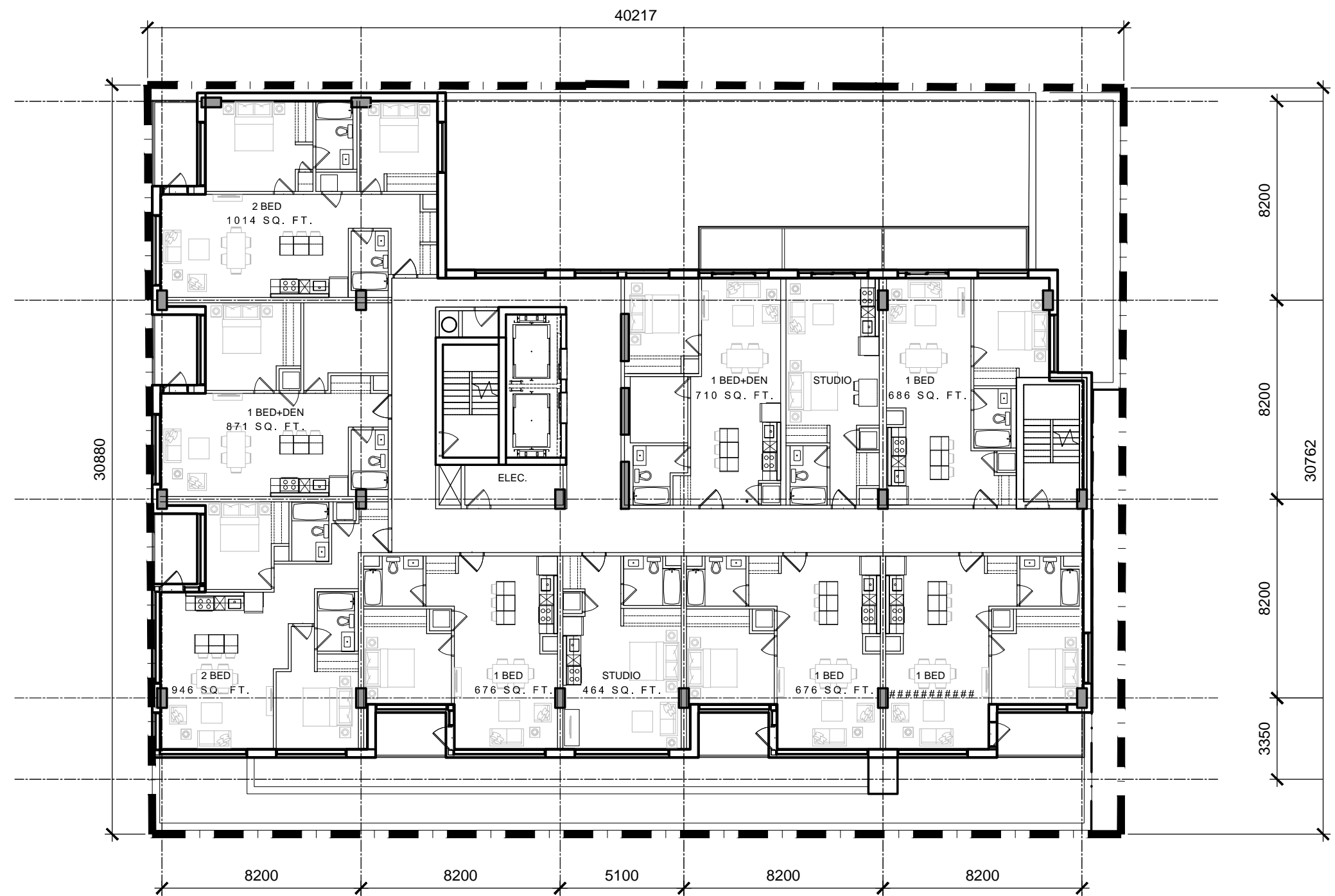
Zoning GFA AREA 7,001 sq. ft.



17TH FLOOR PLAN  
APARTMENT UNITS

FLOOR AREA 8872 SQ. FT.  
Common Area 1,922 sq. ft.  
Leasable Area 6,950 sq. ft.

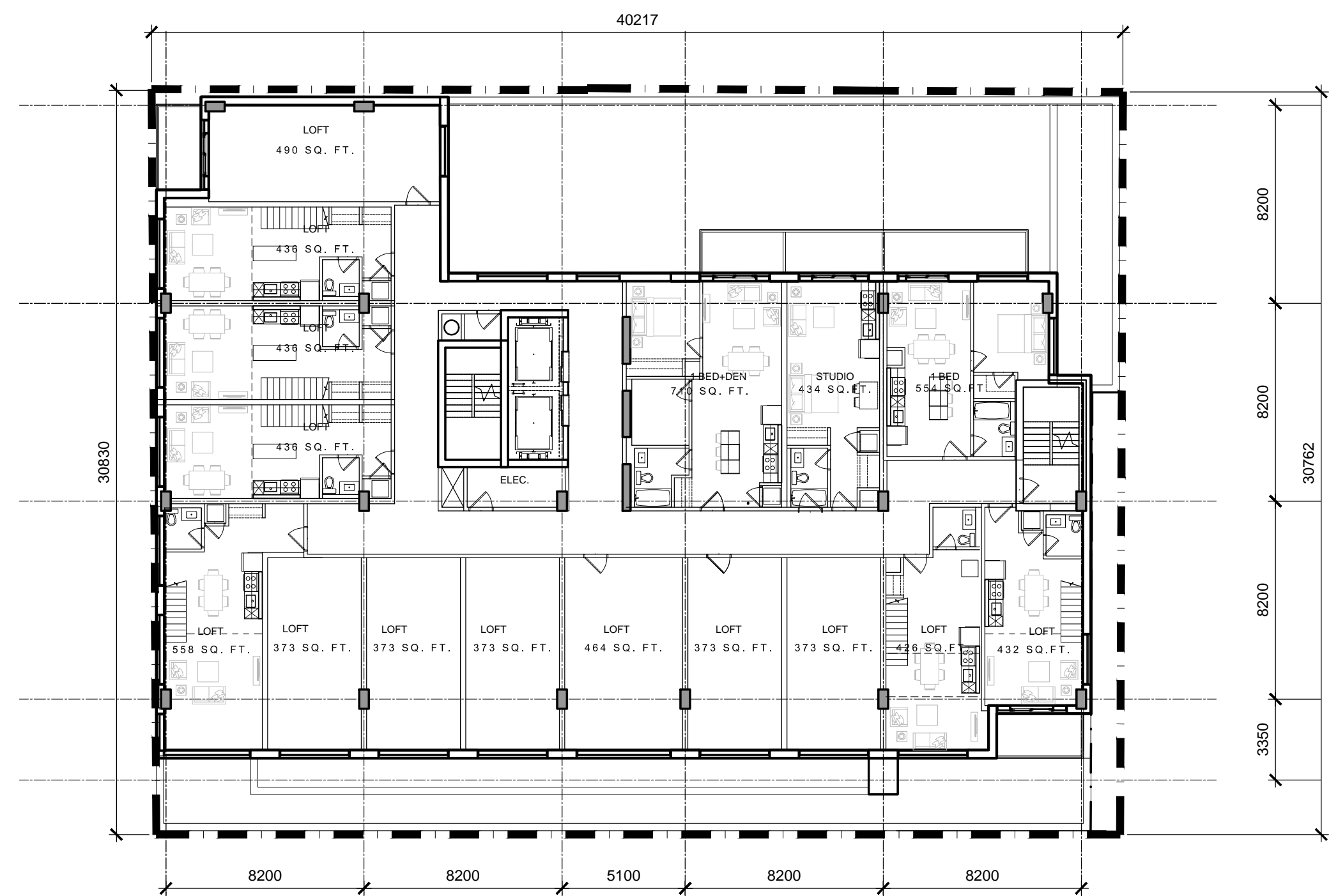
Zoning GFA AREA 6,411 sq. ft.  
Balcony Area 637 sq. ft.



18th to 22nd FLOOR PLAN  
APARTMENT UNITS

FLOOR AREA 8872 SQ. FT.  
Common Area 1,677 sq. ft.  
Leasable Area 7,195 sq. ft.

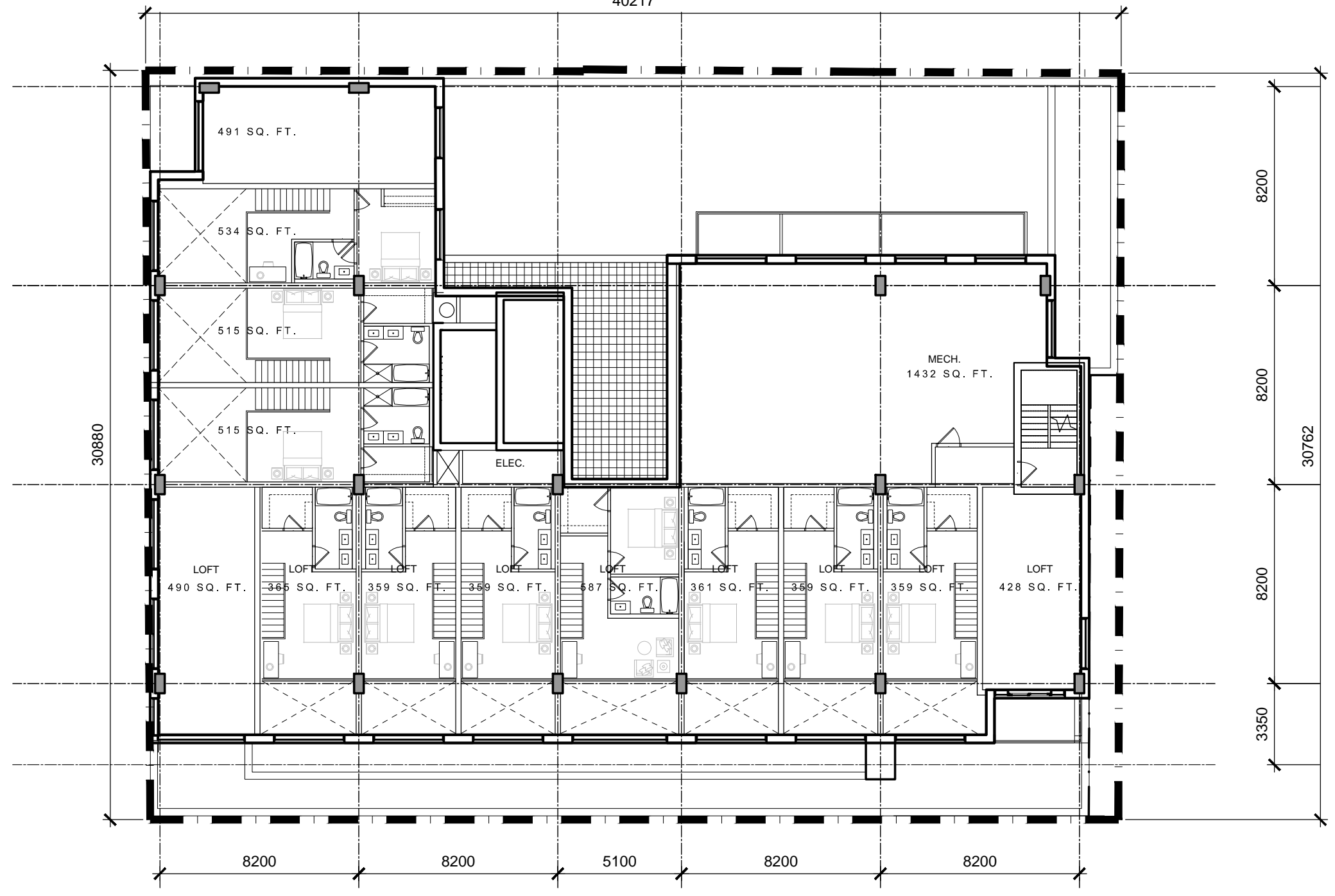
Zoning GFA AREA 6,664 sq. ft.  
Balcony Area 637 sq. ft.



23rd FLOOR PLAN

FLOOR AREA 9103 SQ. FT.  
Common Area 1,677 sq. ft.  
Leasable Area 6,994 sq. ft.

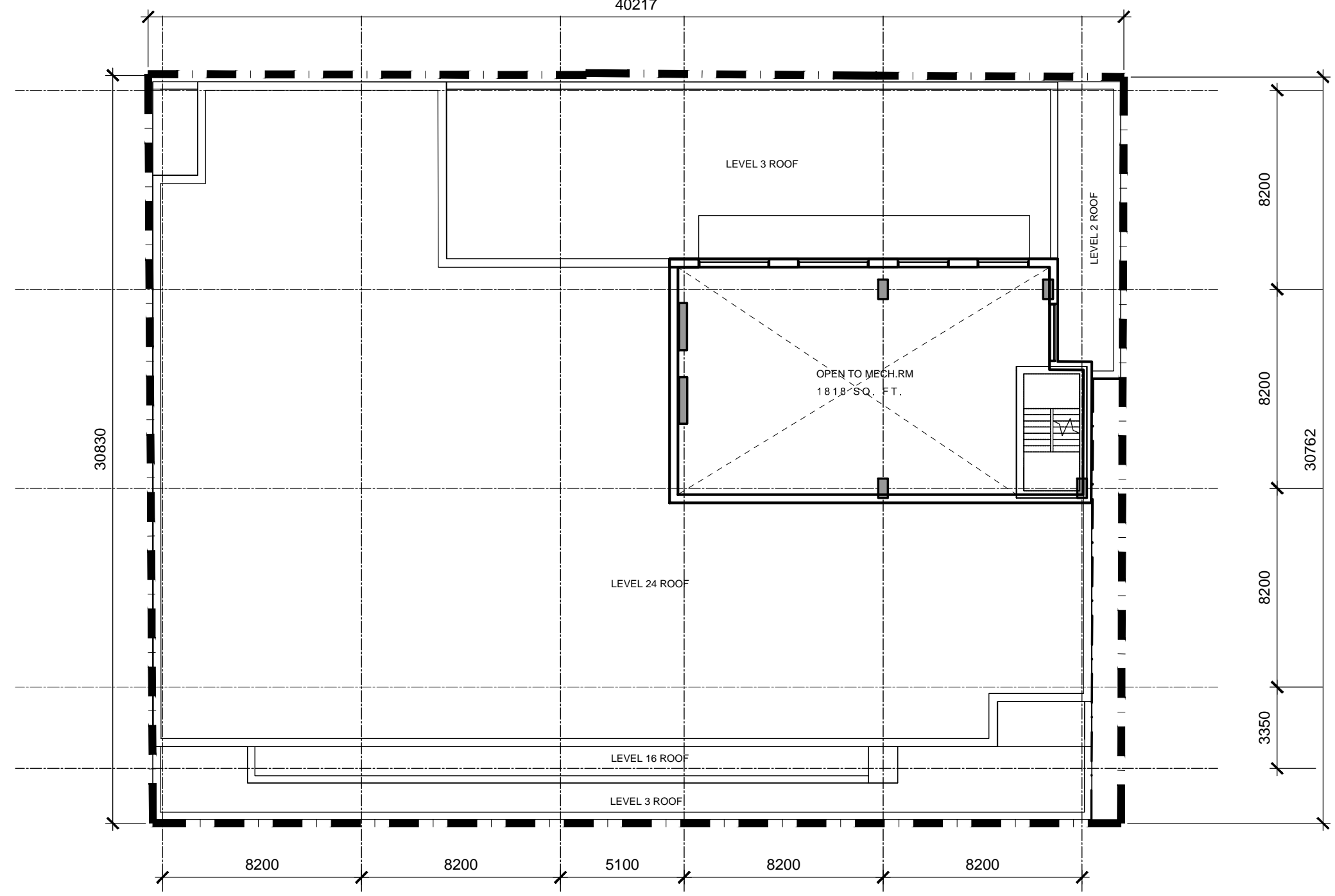
Zoning GFA AREA 6,816 sq. ft.  
Balcony Area 406 sq. ft.



24th FLOOR PLAN

FLOOR AREA 6,463.51 sq. ft.  
Leasable Area 6,464 sq. ft.  
INCLUDES AREA

Zoning GFA AREA 6,086 sq. ft.



MECHANICAL PENTHOUSE

IT IS THE RESPONSIBILITY OF THE APPROPRIATE CONTRACTOR TO CHECK AND VERIFY ALL DIMENSIONS ON SITE AND TO REPORT ALL ERRORS AND/OR OMISSIONS TO THE ARCHITECT.  
ALL CONTRACTORS MUST COMPLY WITH ALL PERTINENT CODES AND BY-LAWS.  
THIS DRAWING MAY NOT BE USED FOR CONSTRUCTION UNTIL SIGNED BY THE ARCHITECT.  
DO NOT SCALE DRAWINGS.  
COPYRIGHT RESERVED.



#### NOTATION SYMBOLS:

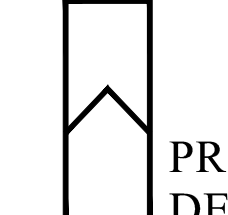
- INDICATES DRAWING NOTES, LISTED ON EACH SHEET.
- INDICATES ASSEMBLY TYPE; REFER TO TYPICAL ASSEMBLIES SCHEDULE.
- INDICATES WINDOW TYPE; REFER TO WINDOW ELEVATIONS AND DETAILS ON A900 SERIES.
- INDICATES DOOR TYPE; REFER TO DOOR SCHEDULE AND DETAILS ON A900 SERIES.
- DETAIL NUMBER
- TITLE
- DETAIL REFERENCE PAGE
- DETAIL CROSS REFERENCE PAGE


#### LRT ALIGNMENT DISCLAIMER

APPROXIMATE LRT TUNNEL AND SHORING ALLOWANCE LOCATION TAKEN FROM CITY OF OTTAWA DRAWINGS  
CONFEDERATION LINE WEST LRT EXTENSION - TUNNEY'S  
PASTURE STATION TO BASELINE STATION; PLAN AND PROFILE  
NEW ORCHARD STATION SS+170 - SS+770 SHEET 16, DATED  
JUNE 2, 2016 & GENERAL ARRANGEMENT - RICHMOND ROAD  
TUNNEL SHEET 102, DATED FEBRUARY 10, 2016

ISSUED FOR SITE PLAN CONTROL	Dec. 07, 16
ISSUED FOR DESIGN CONCEPT	Oct. 17, 16
No. DESCRIPTION	DATE

ARCHITECT SEAL:  ARCHITECT: 

CLIENT:  PRINCE DEVELOPMENTS  
56 Temperance Street, Suite 700, Toronto, ON M5H 3V5

ARCHITECT:  rla/architecture  
roderick lahey architect inc.  
56 beech street, ottawa, ontario K1S 3J6  
t. 613.724.9932 f. 613.724.1209 rlaarchitecture.ca

PROJECT TITLE:  
**201 RIDEAU STREET**

OTTAWA ONTARIO

SHEET TITLE:  
**FLOOR PLANS**

DRAWN: RV	CHECKED: M.L.
SCALE: 1:200	SHEET No.
PROJECT No. 1826	<b>A-02</b>