

1 LOCATION PLAN
SP-01 SCALE: NTS

SITE & PROJECT STATISTICS

GENERAL INFORMATION

Zoning: MC16 H20
 Min. Lot Area: No minimum
 Min. Lot Width: No minimum
 Min. Building Height: No minimum
 Max. Building Height: 20m
 Min. Front Yard: Ground floor: 2.0m from public street
 Above 3rd storey: 2.0m from wall facing front lot (line when building height is over 4 storeys)
 Min. Rear Yard: Storeys 1-3: 3.0m
 Storeys 4-8: 7.5m
 Min. Int. Side Yard: No minimum
 Max. GFA / retail unit: 200m²
 Max. GFA / office unit: Ground floor: 200m²
 Other floors: No maximum

PROJECT STATISTICS

Lot Area: 1249.4m²
 Lot Width: 31.785m
 Building Height: XX.00m
 Front Yards: Ground floor: 2,000m²
 Storey 2: 5,450m²
 Storeys 3-4: 4,500m²
 Storeys 5-6: 5,000m²
 Storeys 7-8: 8,000m²
 Floor Yards: Storeys 1-6: 5,000m²
 Storey 6-8: 8,500m²
 Int. Side Yard: 0m

Number of Residential Units: 75
 Total GFA of Office Unit 101: 3806m²
 Ground Floor GFA of Office Unit 101: 1971m²
 Total GFA of Retail Unit 102: 105.5m²

PARKING CALCULATION
 As per Section 101, Section 102 and Clause 182(16)(i)
 Within Area Z or Schedule 1A

Residential Parking
 Required Parking: 0 space
 No. Parking Required: 49 spaces
 Parking Provided: 49 spaces

Visitor Parking
 Required Parking: 8 spaces
 Parking Provided: 8 spaces

Retail Parking
 Required Parking: 0 space
 Parking Provided: 0 space

Office Parking
 Required Parking: 0 space
 Parking Provided: 6 spaces

Total Parking Provided: 63 spaces

BICYCLE PARKING CALCULATION
 As per Table 111A

Required Parking: 40 spaces
 Within Area B of Schedule 1
 0.5 spaces unit (111A(b)(i))
 1x200m² retail space (111A(e))
 1x200m² office space (111A(e))

Total Parking Provided: 40 spaces

AMENITY AREA CALCULATION
 As per Table 107

Total Amenity Area Req'd: 450m²
 ground

Communal Amenity Req'd: 225m²
 Min of 50% of Total Amenity Area

Total Amenity Area Provided: 1028.5m²

Level 01: 0m²
 Level 02: 125.5m²
 Level 03: 84.1m²
 Level 04: 84.1m²
 Level 05: 103.3m²
 Level 06: 144.3m²
 Level 07: 160.0m²
 Level 08: 117.8m²
 Roof Terrace: 209.5m²

Communal Amenity Provided: 209.5m²
 Roof Terrace: 209.5m²

2 STATISTICS
SP-01 SCALE: NTS

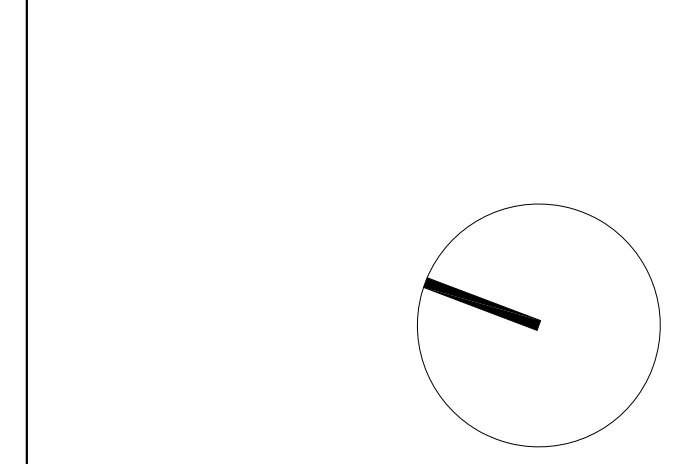
- GENERAL ARCHITECTURAL NOTES:**
- This drawing is the property of the Architect and may not be reproduced or used without the expressed consent of the Architect.
 - Drawings are not to be scaled. The Contractor is responsible for checking and verifying all levels and dimensions and shall report all discrepancies to the Architect and obtain clarification prior to commencing work.
 - Upon notice in writing, the Architect will provide written graphic clarification or supplementary information regarding the intent of the Contract Documents.
 - The Architectural drawings are to be read in conjunction with all other Contract Documents including Project Manuals and the Structural, Mechanical and Electrical Drawings.
 - Positions of exposed or finished Mechanical or Electrical devices, fittings and fixtures are indicated on the Architectural Drawings. Locations shown on the Architectural Drawings shall govern over Mechanical and Electrical Drawings. Mechanical and Electrical items not clearly located will be located as directed by the Architect.
 - These documents are not to be used for construction unless specifically noted for such purpose.



REVISION RECORD

ISSUED FOR COORDINATION	DATE
ISSUED FOR COORDINATION	2018-10-24
ISSUED FOR COORDINATION	2018-10-19
ISSUED FOR COORDINATION	2018-10-12
ISSUED FOR COORDINATION	2018-09-26
ISSUED FOR COORDINATION	2018-09-17

ISSUE RECORD



16 HAMILTON
 16 - 20 Hamilton Avenue N
 Ottawa, ON

Project1 Studio Incorporated
 (613) 884-3539 | info@project1studio.ca

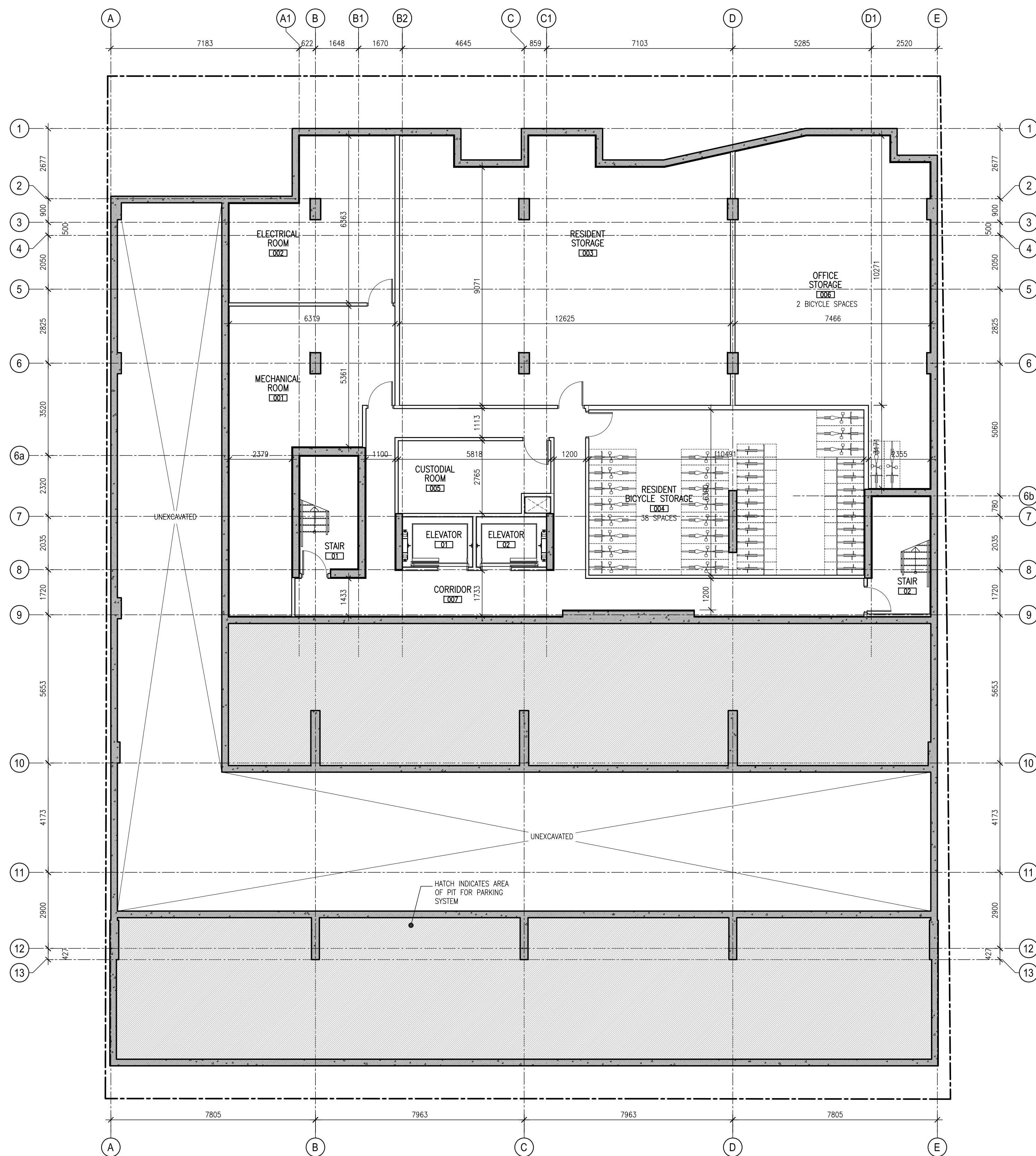
PROJ	SCALE	DRAWN	REVIEWED
1823	NOTED	LB	RMK

SITE PLAN & STATISTICS

SP-01

2 SITE PLAN
SP-01 SCALE: 1:100

* FOR INFORMATION ONLY



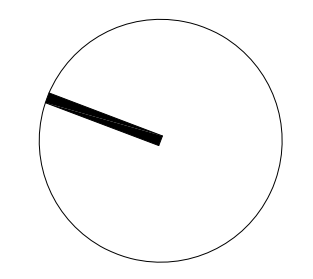
- GENERAL ARCHITECTURAL NOTES:
- This drawing is the property of the Architect and may not be reproduced or used without the expressed consent of the Architect.
 - Drawings are not to be scaled. The Contractor is responsible for checking and verifying all levels and dimensions and shall report all discrepancies to the Architect and obtain clarification prior to commencing work.
 - Upon notice in writing, the Architect will provide written/graphic clarification or supplementary information regarding the intent of the Contract Documents.
 - The Architectural drawings are to be read in conjunction with all other Contract Documents including Project Manuals and the Structural, Mechanical and Electrical Drawings.
 - Positions of exposed or finished Mechanical or Electrical devices, fittings and fixtures are indicated on the Architectural Drawings. Locations shown on the Architectural Drawings shall govern over Mechanical and Electrical Drawings. Mechanical and Electrical items not clearly located will be located as directed by the Architect.
 - These documents are not to be used for construction unless specifically noted for such purpose.



REVISION RECORD

ISSUED FOR COORDINATION	2018-10-24
ISSUED FOR COORDINATION	2018-10-22

ISSUE RECORD



Project1 Studio Incorporated
 (613) 984-3539 | info@project1studio.ca

16 HAMILTON

16 - 20 Hamilton Avenue N
 Ottawa, ON

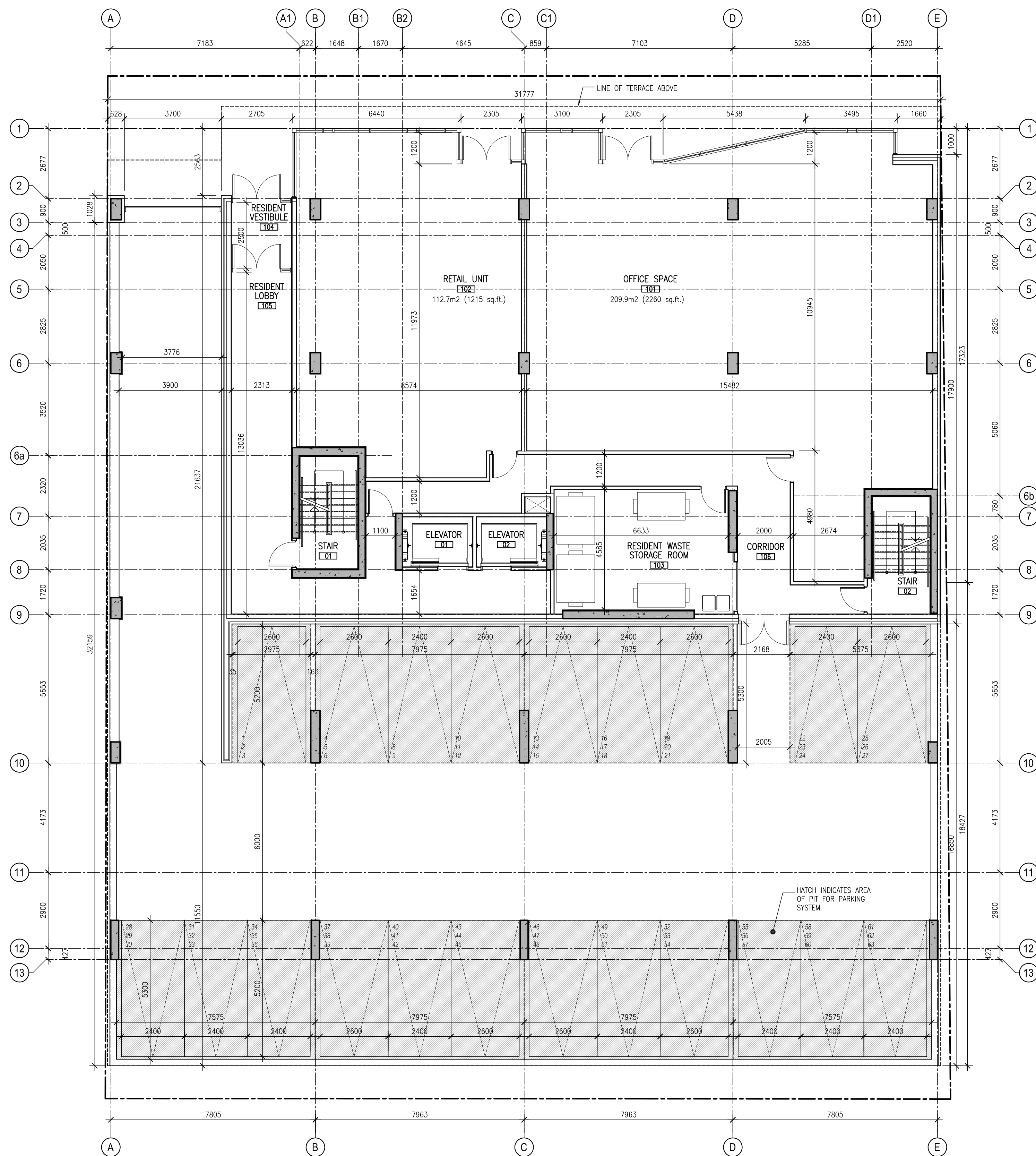
PROJ	SCALE	DRAWN	REVIEWED
1823	NOTED	LB	RMK

LEVEL 00 FLOOR PLAN

A101

1 LEVEL 00 FLOOR PLAN
 A101 SCALE: 1:100

* FOR INFORMATION ONLY



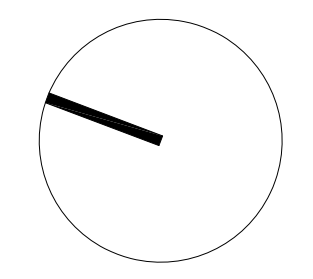
- GENERAL ARCHITECTURAL NOTES:
1. This drawing is the property of the Architect and may not be reproduced or used without the expressed consent of the Architect.
 2. Drawings are not to be scaled. The Contractor is responsible for checking and verifying all levels and dimensions and shall report all discrepancies to the Architect and obtain clarification prior to commencing work.
 3. Upon notice in writing, the Architect will provide written/graphic clarification or supplementary information regarding the intent of the Contract Documents.
 4. The Architectural drawings are to be read in conjunction with all other Contract Documents including Project Manuals and the Structural, Mechanical and Electrical Drawings.
 5. Positions of exposed or finished Mechanical or Electrical devices, fittings and fixtures are indicated on the Architectural Drawings. Locations shown on the Architectural Drawings shall govern over Mechanical and Electrical Drawings.
 6. These documents are not to be used for construction unless specifically noted for such purpose.



REVISION RECORD

ISSUED FOR COORDINATION	DATE
ISSUED FOR COORDINATION	2018-10-24
ISSUED FOR COORDINATION	2018-10-22
ISSUED FOR COORDINATION	2018-10-19
ISSUED FOR COORDINATION	2018-10-16
ISSUED FOR COORDINATION	2018-10-12

ISSUE RECORD



16 HAMILTON
 16 - 20 Hamilton Avenue N
 Ottawa, ON

PROJ	SCALE	DRAWN	REVIEWED
1823	NOTED	LB	RMK

LEVEL 01 FLOOR PLAN

A102

CLADDING LEGEND

- 1 BRICK
COLOUR: DARK GREY
- 2 FIBRE CEMENT PANEL
COLOUR: DARK GREY
- 3 FIBRE CEMENT PANEL
COLOUR: LIGHT GREY
- 4 STEEL CLADDING
COLOUR: DARK GREY
- 5 METAL MESH
COLOUR: SILVER
- 6 GLASS & ALUMINUM GUARD
- 7 PERFORATED METAL PANEL
COLOUR: LIGHT GREY
- 8 PERFORATED METAL PANEL
COLOUR: MEDIUM GREY
- 9 ACOUSTICAL LOUVERS
- 10 FRITTED GLASS SCREENS

- GENERAL ARCHITECTURAL NOTES:**
1. This drawing is the property of the Architect and may not be reproduced or used without the expressed consent of the Architect.
 2. Drawings are not to be scaled. The Contractor is responsible for checking and verifying all levels and dimensions and shall report all discrepancies to the Architect and obtain clarification prior to commencing work.
 3. Upon notice in writing, the Architect will provide written/graphic clarification or supplementary information regarding the intent of the Contract Documents.
 4. The Architectural drawings are to be read in conjunction with all other Contract Documents including Project Manuals and the Structural, Mechanical and Electrical Drawings.
 5. Positions of exposed or finished Mechanical or Electrical devices, fittings and fixtures are indicated on the Architectural Drawings. Locations shown on the Architectural Drawings shall govern over Mechanical and Electrical Drawings.
 6. These documents are not to be used for construction unless specifically noted for such purpose.



REVISION RECORD

ISSUED FOR COORDINATION 2018-10-24

ISSUE RECORD



Project1 Studio Incorporated
613.884.3939 | mail@project1studio.ca

16 HAMILTON
16 Hamilton Avenue N
Ottawa, ON

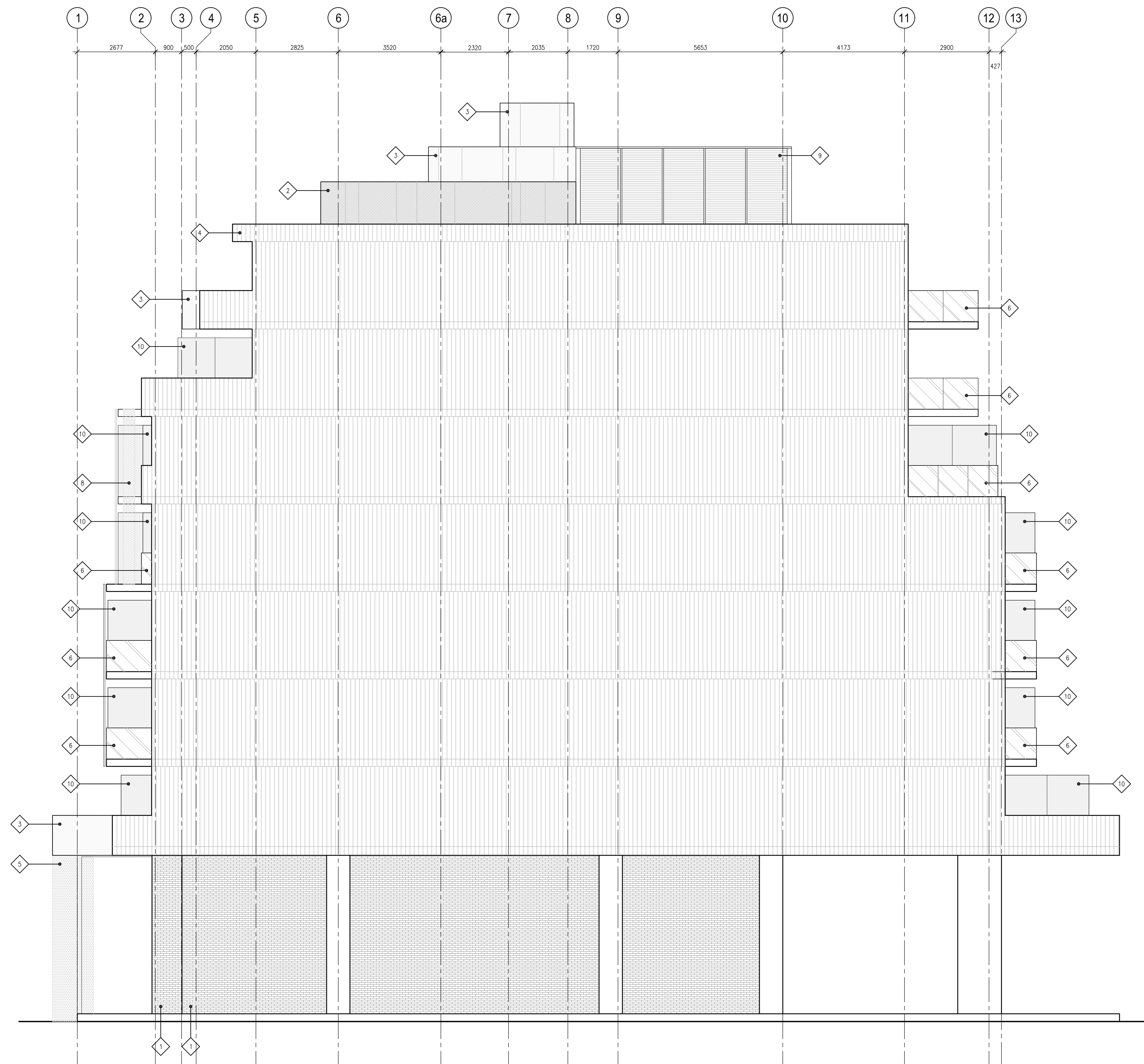
PROJ	SCALE	DRAWN	REVIEWED
1823	NOTED	LB	RMK

EAST ELEVATION

A201



1 EAST ELEVATION
A201 SCALE: 1:75



CLADDING LEGEND

- 1 BRICK
COLOUR: DARK GREY
- 2 FIBRE CEMENT PANEL
COLOUR: DARK GREY
- 3 FIBRE CEMENT PANEL
COLOUR: LIGHT GREY
- 4 STEEL CLADDING
COLOUR: DARK GREY
- 5 METAL MESH
COLOUR: SILVER
- 6 GLASS & ALUMINUM GUARD
- 7 PERFORATED METAL PANEL
COLOUR: LIGHT GREY
- 8 PERFORATED METAL PANEL
COLOUR: MEDIUM GREY
- 9 ACOUSTICAL LOUVERS
- 10 FRITTED GLASS SCREENS

- GENERAL ARCHITECTURAL NOTES:**
1. This drawing is the property of the Architect and may not be reproduced or used without the expressed consent of the Architect.
 2. Drawings are not to be scaled. The Contractor is responsible for checking and verifying all levels and dimensions and shall report all discrepancies to the Architect and obtain clarification prior to commencing work.
 3. Upon notice in writing, the Architect will provide written/graphic clarification or supplementary information regarding the intent of the Contract Documents.
 4. The Architectural drawings are to be read in conjunction with all other Contract Documents including Project Manuals and the Structural, Mechanical and Electrical Drawings.
 5. Positions of exposed or finished Mechanical or Electrical devices, fittings and fixtures are indicated on the Architectural Drawings. Locations shown on the Architectural Drawings shall govern over Mechanical and Electrical Drawings. Mechanical and Electrical items not clearly located will be located as directed by the Architect.
 6. These documents are not to be used for construction unless specifically noted for such purpose.



REVISION RECORD

ISSUED FOR COORDINATION 2018-10-24

ISSUE RECORD



Project1 Studio Incorporated
613.884.3939 | mail@project1studio.ca

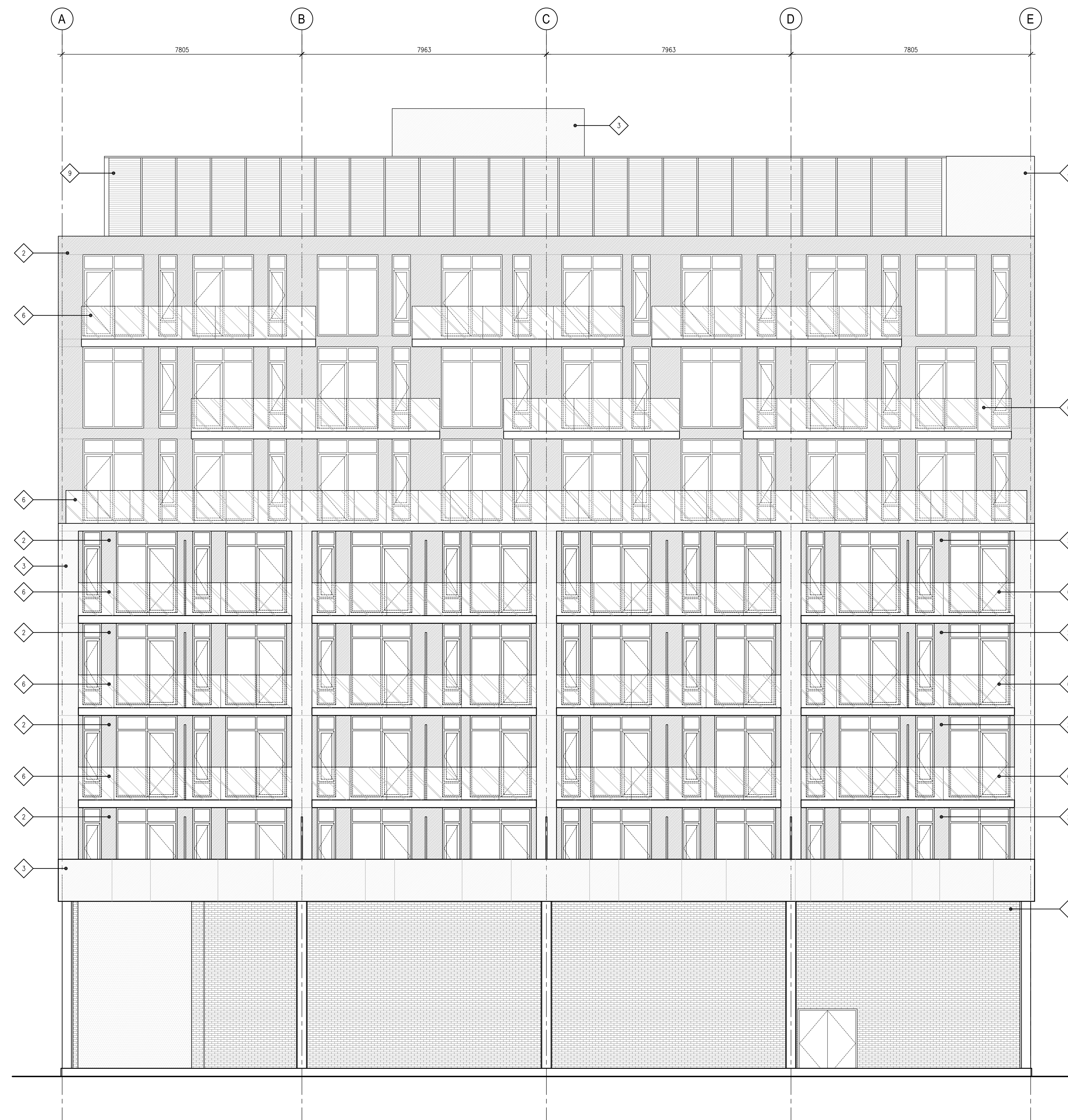
16 HAMILTON

16 Hamilton Avenue N
Ottawa, ON

PROJ	SCALE	DRAWN	REVIEWED
1823	NOTED	LB	RMK

NORTH ELEVATION

A202



CLADDING LEGEND

- 1 BRICK
COLOUR: DARK GREY
- 2 FIBRE CEMENT PANEL
COLOUR: DARK GREY
- 3 FIBRE CEMENT PANEL
COLOUR: LIGHT GREY
- 4 STEEL CLADDING
COLOUR: DARK GREY
- 5 METAL MESH
COLOUR: SILVER
- 6 GLASS & ALUMINUM GUARD
- 7 PERFORATED METAL PANEL
COLOUR: LIGHT GREY
- 8 PERFORATED METAL PANEL
COLOUR: MEDIUM GREY
- 9 ACOUSTICAL LOUVERS
- 10 FRITTED GLASS SCREENS

- GENERAL ARCHITECTURAL NOTES:**
1. This drawing is the property of the Architect and may not be reproduced or used without the expressed consent of the Architect.
 2. Drawings are not to be scaled. The Contractor is responsible for checking and verifying all levels and dimensions and shall report all discrepancies to the Architect and obtain clarification prior to commencing work.
 3. Upon notice in writing, the Architect will provide written/graphic clarification or supplementary information regarding the intent of the Contract Documents.
 4. The Architectural drawings are to be read in conjunction with all other Contract Documents including Project Manuals and the Structural, Mechanical and Electrical Drawings.
 5. Positions of exposed or finished Mechanical or Electrical devices, fittings and fixtures are indicated on the Architectural Drawings. Locations shown on the Architectural Drawings shall govern over Mechanical and Electrical Drawings. Mechanical and Electrical items not clearly located will be located as directed by the Architect.
 6. These documents are not to be used for construction unless specifically noted for such purpose.



REVISION RECORD

ISSUED FOR COORDINATION 2018-10-24

ISSUE RECORD



Project1 Studio Incorporated
613.884.3939 | mail@project1studio.ca

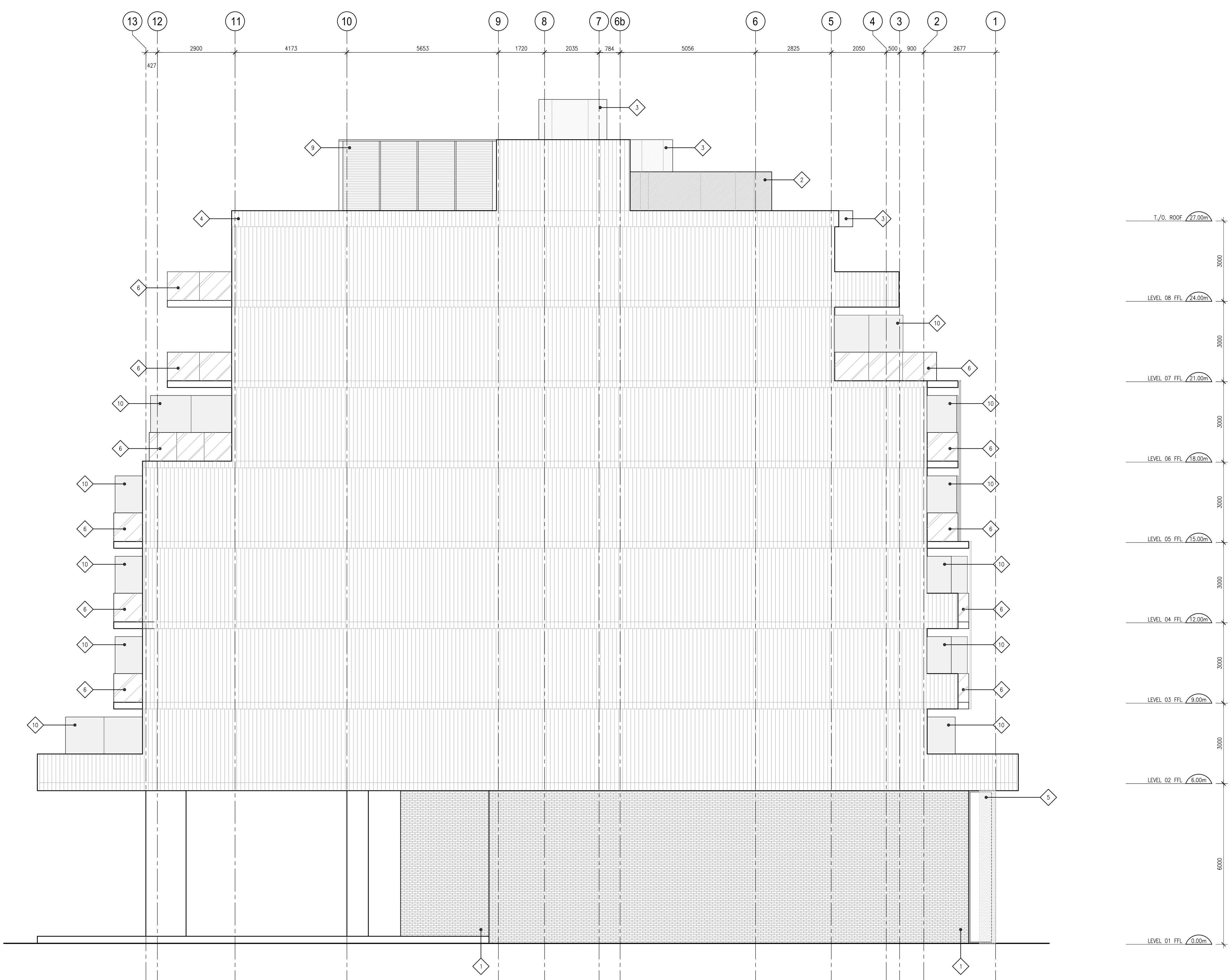
16 HAMILTON

16 Hamilton Avenue N
Ottawa, ON

PROJ	SCALE	DRAWN	REVIEWED
1823	NOTED	LB	RMK

WEST ELEVATION

A203



CLADDING LEGEND

1	BRICK	COLOUR: DARK GREY
2	FIBRE CEMENT PANEL	COLOUR: DARK GREY
3	FIBRE CEMENT PANEL	COLOUR: LIGHT GREY
4	STEEL CLADDING	COLOUR: DARK GREY
5	METAL MESH	COLOUR: SILVER
6	GLASS & ALUMINUM GUARD	
7	PERFORATED METAL PANEL	COLOUR: LIGHT GREY
8	PERFORATED METAL PANEL	COLOUR: MEDIUM GREY
9	ACOUSTICAL LOUVERS	
10	FRITTED GLASS SCREENS	

GENERAL ARCHITECTURAL NOTES:

- This drawing is the property of the Architect and may not be reproduced or used without the expressed consent of the Architect.
- Drawings are not to be scaled. The Contractor is responsible for checking and verifying all levels and dimensions and shall report all discrepancies to the Architect and obtain clarification prior to commencing work.
- Upon notice in writing, the Architect will provide written/graphic clarification or supplementary information regarding the intent of the Contract Documents.
- The Architectural drawings are to be read in conjunction with all other Contract Documents including Project Manuals and the Structural, Mechanical and Electrical Drawings.
- Positions of exposed or finished Mechanical or Electrical devices, fittings and fixtures are indicated on the Architectural Drawings. Locations shown on the Architectural Drawings shall govern over Mechanical and Electrical Drawings. Mechanical and Electrical items not clearly located will be located as directed by the Architect.
- These documents are not to be used for construction unless specifically noted for such purpose.



REVISION RECORD

NO.	DATE	DESCRIPTION

ISSUED FOR COORDINATION 2018-10-24

ISSUE RECORD

NO.	DATE	DESCRIPTION



16 HAMILTON
16 Hamilton Avenue N
Ottawa, ON

PROJ	SCALE	DRAWN	REVIEWED
1823	NOTED	LB	RMK

SOUTH ELEVATION

A204