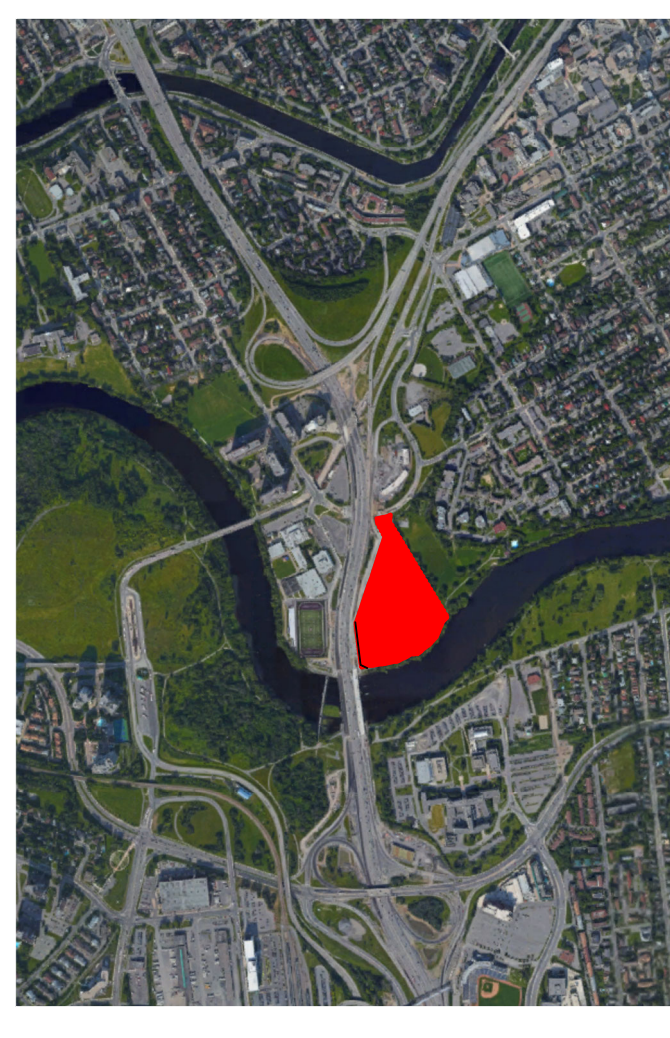


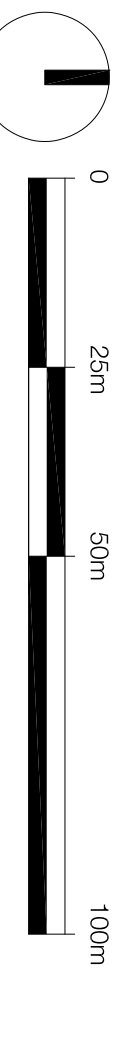
# ROBINSON VILLAGE

## CONCEPT MASTER PLAN

### CONNECTIVITY



- LEGEND**
- MULTI-USE PATH CONNECTIONS
  - PEDESTRIAN CONNECTIONS
  - POTENTIAL MID-BLOCK PEDESTRIAN CONNECTIONS
  - PROPERTY BOUNDARIES
  - GREEN SPACE/PARK
  - STUDY AREA
  - RADIUS FROM LEES TRANSIT STATION COMMUNITY ENGAGEMENT OPPORTUNITY CONNECTIVITY NODE



No.	REVISION	DATE	BY
1	DRAFT	2018,08,10	CB
2	CONCEPT MASTER PLAN	2018,08,13	RP
3	REVISION	2018,08,13	RP
4	REVISION	2018,08,23	CB
5	REVISION	2018,08,30	CB
6	BOUNDARY REVISION	2018,09,14	EL
7	REVISION	2018,10,09	CB
8	REVISION	2018,10,18	CB
9	UPDATE CONNECTIVITY	2018,10,23	RP

**CLIENT**  
**TC UNITED PROPERTY AND DEVELOPMENT**

**FOTENN**  
 Planning + Design

223 McLeod Street, Ottawa, ON K2P 0Z8  
 613.730.5709 www.fotenn.com

DESIGNED RP  
 REVIEWED MS  
 DATE 2018,08,10

**P2**

