


APPROVED
By Douglas James at 10:09 am, Dec 03, 2018


DOUGLAS JAMES, MCIP, RPP
MANAGER, DEVELOPMENT REVIEW - CENTRAL
PLANNING, INFRASTRUCTURE & ECONOMIC
DEVELOPMENT DEPARTMENT, CITY OF OTTAWA

IT IS THE RESPONSIBILITY OF THE APPROPRIATE
CONTRACTOR TO CHECK AND VERIFY ALL DIMENSIONS
ON SITE AND TO REPORT ALL ERRORS AND/OR
OMISSIONS TO THE ARCHITECT.
ALL CONTRACTORS MUST COMPLY WITH ALL
PERTINENT CODES AND BY-LAWS.
THIS DRAWING MAY NOT BE USED FOR CONSTRUCTION
UNTIL SIGNED BY THE ARCHITECT.
DO NOT SCALE DRAWINGS.
COPYRIGHT RESERVED.

NOTATION SYMBOLS:


- (00) INDICATES DRAWING NOTES, LISTED ON EACH SHEET.
- (00) INDICATES ASSEMBLY TYPE: REFER TO TYPICAL ASSEMBLIES SCHEDULE.
- (00) INDICATES WINDOW TYPE: REFER TO WINDOW ELEVATIONS AND DETAILS ON A800 SERIES.
- (000) INDICATES DOOR TYPE: REFER TO DOOR SCHEDULE AND DETAILS ON A500 SERIES.
- (00) DETAIL NUMBER
- (00) TITLE
- (00) SCALE
- (00) DETAIL REFERENCE PAGE
- (00) DETAIL CROSS REFERENCE PAGE

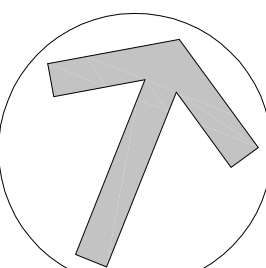
LRT ALIGNMENT DISCLAIMER

APPROXIMATE LRT TUNNEL AND SHORING ALLOWANCE
LOCATION TAKEN FROM CITY OF OTTAWA DRAWINGS:
CONFEDERATION LINE WEST LRT EXTENSION - TUNNEY'S
PASTURE STATION TO BASELINE STATION; PLAN AND PROFILE
- NEW ORCHARD STATION 65+170 - 65+170 SHEET 16, DATED
JUNE 2, 2016 & GENERAL ARRANGEMENT - RICHMOND ROAD
TUNNEL SHEET 102, DATED FEBRUARY 10, 2016

4	ISSUED FOR SITE PLAN CONTROL COMMENTS	Aug. 1, 18
3	ISSUED FOR SITE PLAN CONTROL	June. 27, 18
2	ISSUED FOR SITE PLAN CONTROL	Apr. 20, 18
1	ISSUED FOR DESIGN CONCEPT	Mar. 02, 18
No.	DESCRIPTION	DATE

REVISIONS:

ARCHITECT SEAL:

SEAL DATE: STAMP DATE

NORTH ARROW:


CLIENT:

**The Founders
Residences
Westboro**

ARCHITECT:

**rla/architecture**
roderick lahey architect inc.
56 beech street, ottawa, ontario K1S 3J6
t. 613.724.9932 f. 613.724.1209 rlaarchitecture.ca

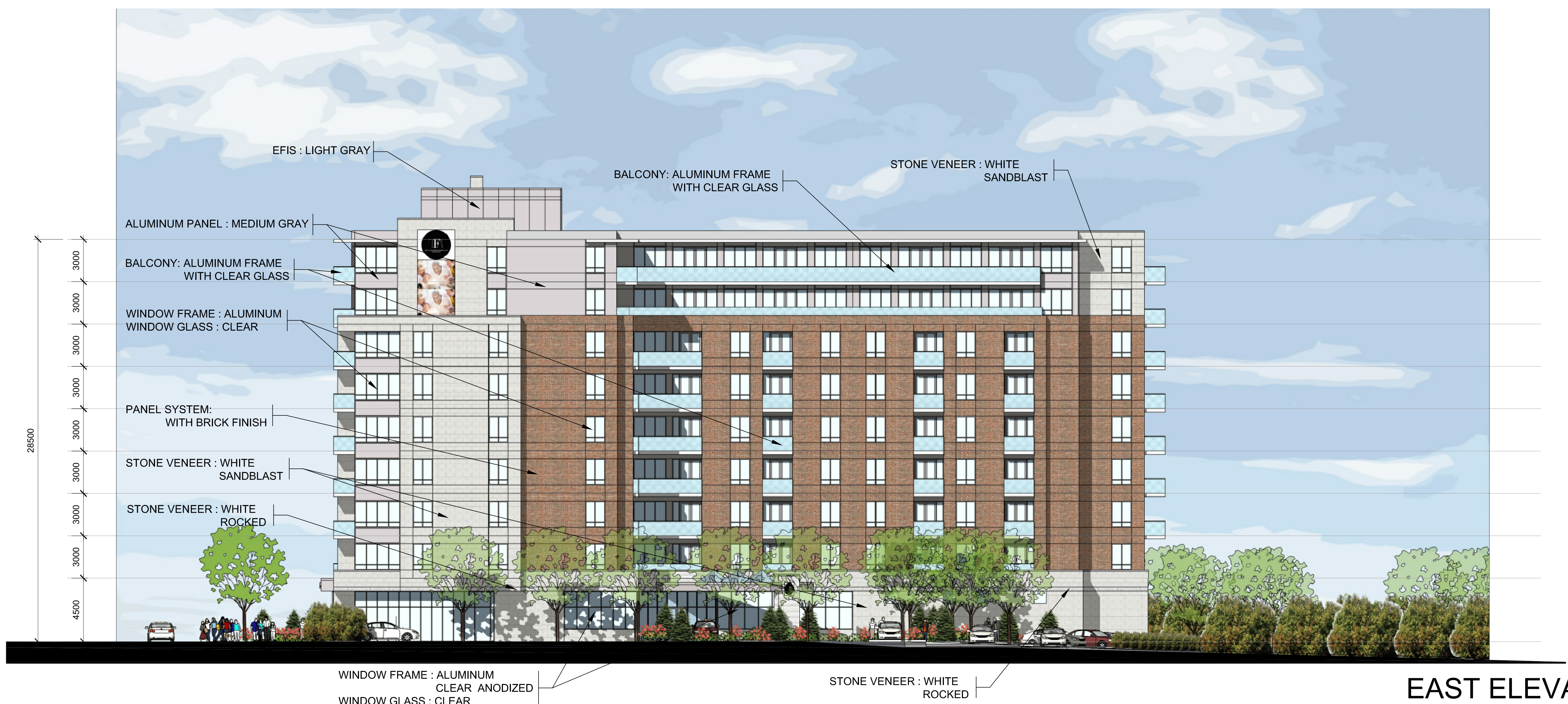
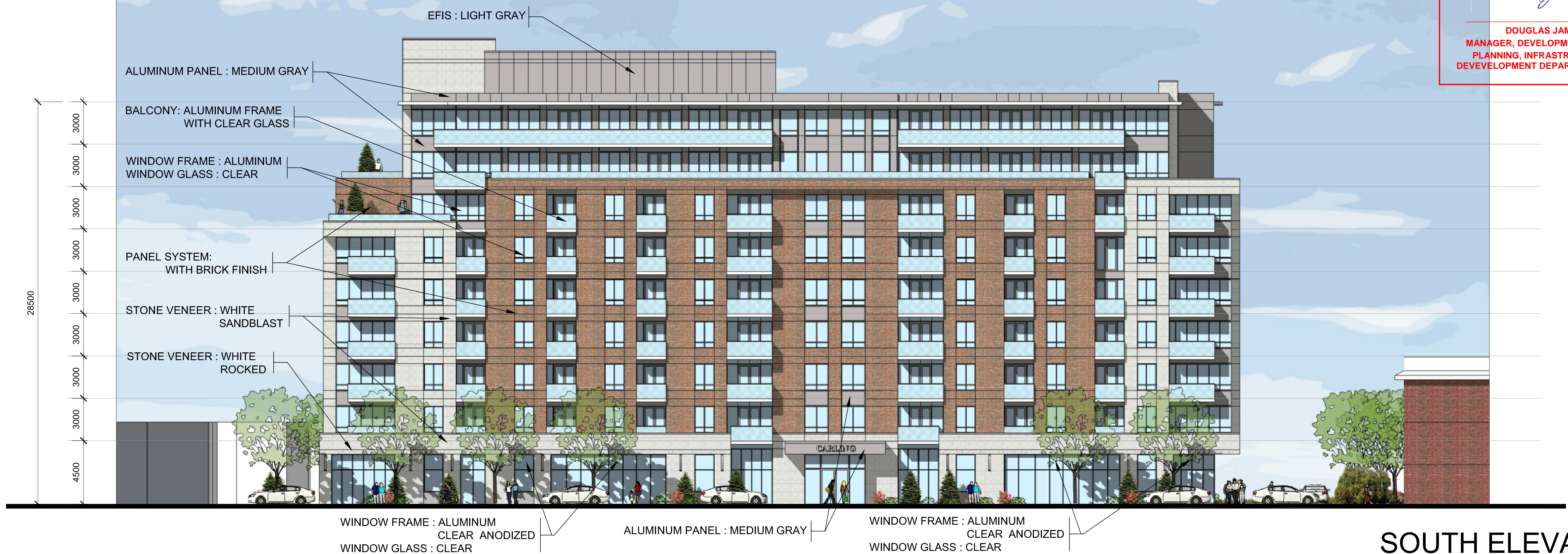
PROJECT TITLE:


**The Founders
Residences Westboro**
1705 CARLING AVENUE
OTTAWA ONTARIO

SHEET TITLE:

ELEVATIONS



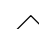


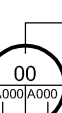
DRAWN: J.S.	CHECKED: R.L.
SCALE: 1:150	SHEET No. A104
PROJECT No. 1740	







DOUGLAS JAMES, MCIP, RPP
MANAGER, DEVELOPMENT REVIEW - CENTRAL
PLANNING, INFRASTRUCTURE & ECONOMIC
DEVELOPMENT DEPARTMENT, CITY OF OTTAWA

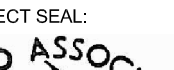
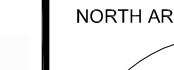
NOTATION SYMBOLS:

-  INDICATES DRAWING NOTES, LISTED ON EACH SHEET.
-  INDICATES ASSEMBLY TYPE; REFER TO TYPICAL ASSEMBLIES SCHEDULE.
-  INDICATES WINDOW TYPE; REFER TO WINDOW ELEVATIONS AND DETAILS ON A900 SERIES.
-  INDICATES DOOR TYPE; REFER TO DOOR SCHEDULE AND DETAILS ON A900 SERIES.
-  DETAIL NUMBER
- 

TITLE

SCALE
-  DETAIL REFERENCE PAGE
-  DETAIL CROSS REFERENCE PAGE

[illegible]

<p>REVISIONS:</p> <p>ARCHITECT SEAL:</p>  <p>SEAL DATE: STAMP DATE</p>	<p>NORTH ARROW:</p> 
--	---

ARCHITECT:

rla / architecture
roderick lahey architect inc.

56 beech street, ottawa, ontario K1S 3J6
613.724.9932 f. 613.724.1209 rlaarchitecture.ca

ELEVATIONS	
DRAWN: J.S.	CHECKED: R.L.
SCALE: 1:150	SHEET No. A105
PROJECT No. 1740	

D07-12-18-0062

