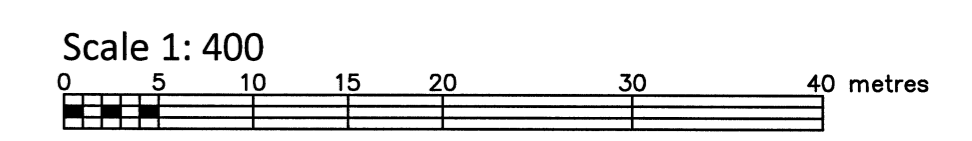
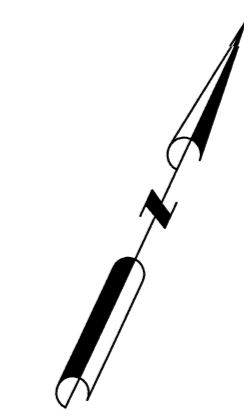


PART OF LOT 30
CONCESSION A (Rideau Front)
GEOGRAPHIC TOWNSHIP OF NEPEAN
CITY OF OTTAWA
FARLEY, SMITH & DENIS SURVEYING LTD. 2018



Metric Note
Distances and coordinates on this plan are in metres and can be converted to feet by dividing by 0.3048.

Distance Note
Distances shown on this plan are ground distances and can be converted to grid distances by multiplying by the combined scale factor of 0.99994.

Bearing Note
Bearings are MTM grid, derived from the part of northerly limit of Colonnade Road having a bearing of N 57° 45' 20" E as shown on plan 4R-30873 and are referred to the Central Meridian of MTM Zone 9 (76° 30' West Longitude) Nad-83 (Original).

Elevation Notes
1. Elevations shown are geodetic and are referred to Geodetic Datum CGVD-1928 :1978.
2. Elevations derived from a site benchmark shown on plan by (AOG) having a published elevation of 85.60m, (AOG) job No. 555-05-4.
3. It is the responsibility of the user of this information to verify that the job benchmark has not been altered or disturbed and that its relative elevation and description agrees with the information shown on this drawing.

Utility Notes
1. This drawing cannot be accepted as acknowledging all of the utilities and it will be the responsibility of the user to contact the respective utility authorities for confirmation.
2. Only visible surface utilities were located.
3. Underground utility data derived from City of Ottawa utility sheet reference: DWG No. 16684, 2506p&p1, 2506p&p2, Sheets No. N-05-26, N-05-27, N-05-21, N-05-20.
4. Sanitary and storm sewer grades and inverts were compiled from: Field measurement and City of Ottawa utility sheets.
5. A field location of underground plant by the pertinent utility authority is mandatory before any work involving breaking ground, probing, excavating etc.

Notes & Legend table with symbols and descriptions for survey monuments, easements, and utilities.

WARNING NO PERSON MAY COPY, REPRODUCE, DISTRIBUTE OR ALTER THIS PLAN IN WHOLE OR IN PART WITHOUT THE WRITTEN PERMISSION OF FARLEY, SMITH & DENIS SURVEYING LTD. © FARLEY, SMITH & DENIS SURVEYING LTD., 2018.

Surveyor's Certificate
I certify that:
1. This survey and plan are correct and in accordance with the Surveys Act, the Surveyors Act and the Regulations made under them.
2. The survey was completed on the 13th day of September, 2018.
Date: Sept 13, 2018
Signature: Jamie Leslie
Ontario Land Surveyor

FARLEY, SMITH & DENIS SURVEYING LTD.
ONTARIO LAND SURVEYORS
CANADA LAND SURVEYORS
190 COLONNADE ROAD, OTTAWA, ONTARIO K2E 7J5
TEL: (613) 727-8226 FAX: (613) 727-1826
FILE No.: 455-18

