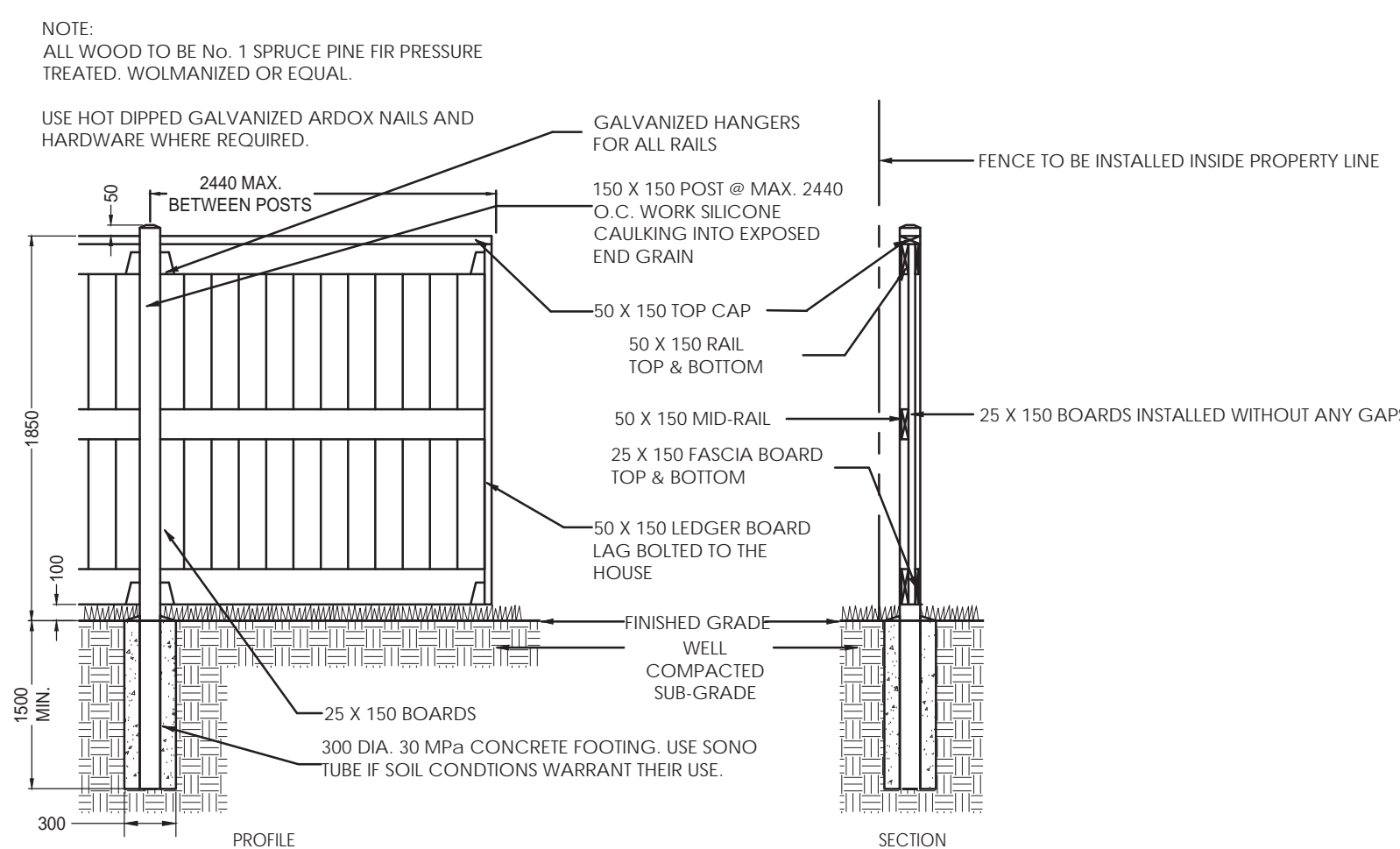
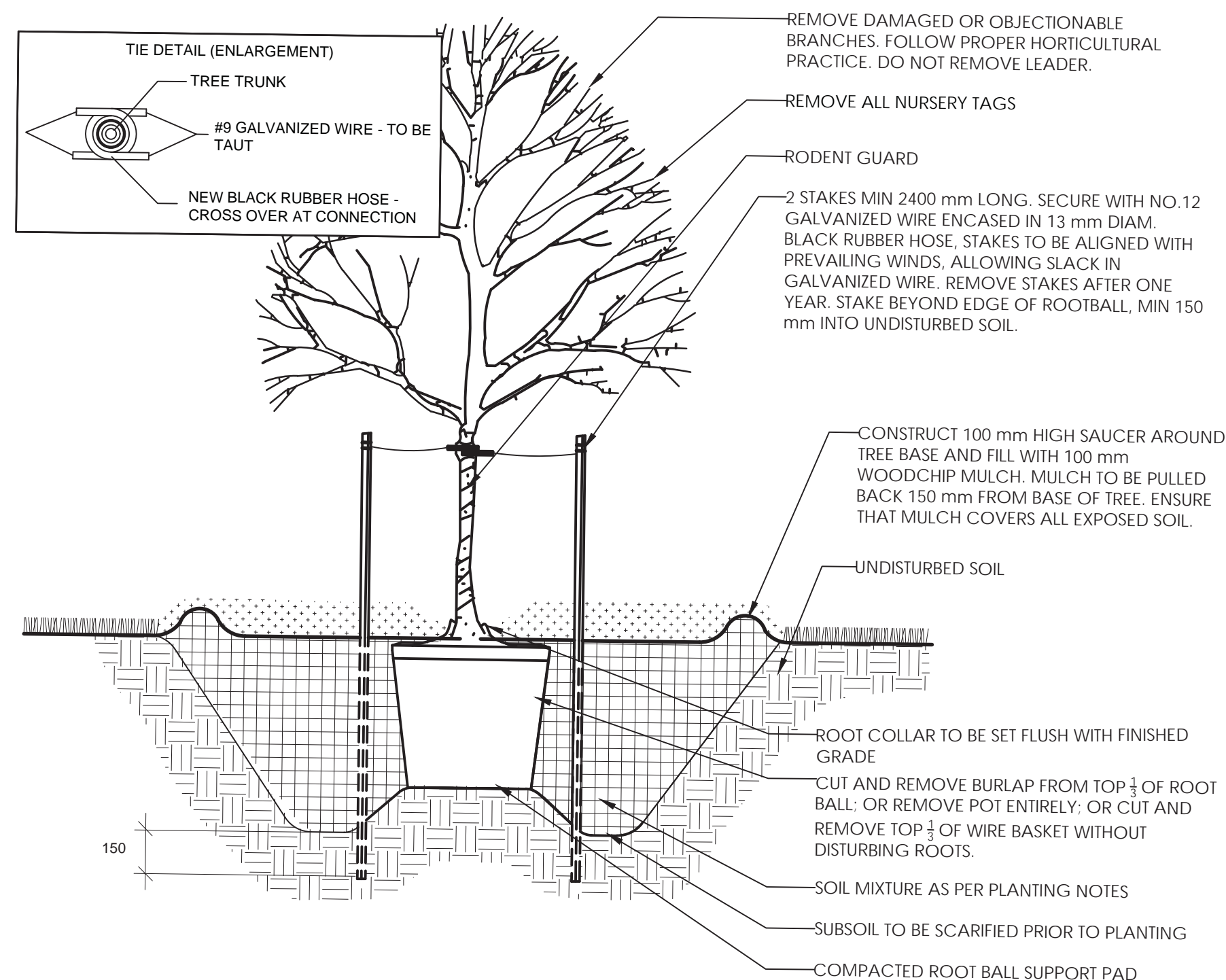
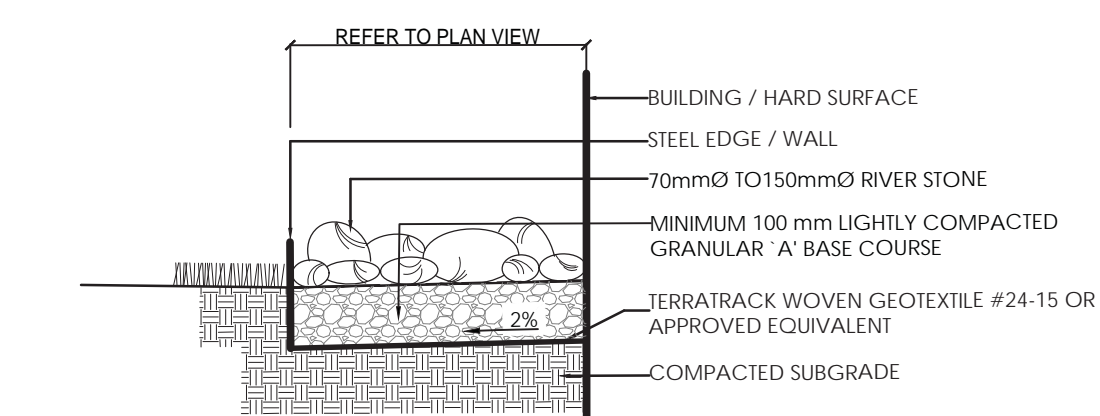


**PLANTING NOTES**

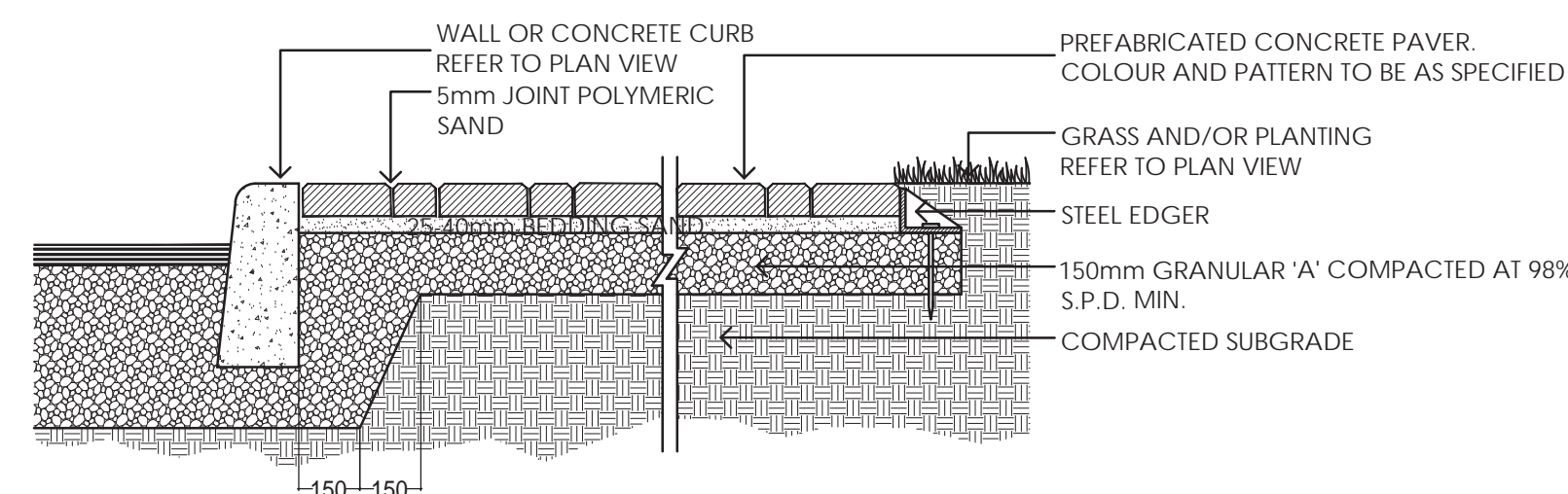
- THE DETAILS ON THIS SHEET DO NOT REPRESENT ANY PARTICULAR SPECIES.
- TREES AND SHRUBS AS INDICATED IN THE DETAILS REPRESENT BOTH CONIFEROUS AND DECIDUOUS SPECIES.
- MATERIAL PLANTED IN GROUP SHALL BE SET IN CONTINUOUS PLANTING BEDS.
- CENTRE LINE OF SHRUBS SHALL NOT BE CLOSER THAN 2.4m FROM BUILDING FACE TO PROTECT BUILDING FOOTINGS AND INSULATION.
- PRUNING - TO SUIT SPECIES - PRUNE BRANCHES BY 1/3 TO REMOVE DAMAGED OR OBJECTIONABLE BRANCHES FOLLOWING PROPER HORTICULTURAL PRACTICE. DO NOT PRUNE LEADERS.
- FIRMLY COMPACT BACKFILLED PLANTING MIXTURE TO ELIMINATE AIR POCKETS OR PREVENT SETTLEMENT.
- PLANTING MATERIAL QUALITY STANDARDS:
  - ALL PLANT MATERIALS TO CONFORM TO THE CANADIAN NURSERY LANDSCAPE ASSOCIATION FOR VARIETY, SIZE AND CONDITION;
  - PLANT MATERIAL COLLECTED FROM WILD SOURCES WILL NOT BE ACCEPTED; LANDSCAPE ARCHITECT RESERVES THE RIGHT TO REFUSE ACCEPTANCE OF ANY PLANT DISPLAYING POOR GROWTH HABITS, INJURY OR DISEASE;
  - ANY PLANTS THAT DO NOT CONFORM TO THE ABOVE STANDARDS WILL BE PROMPTLY REMOVED FROM THE SITE BY THE CONTRACTOR AND REPLACED WITH MATERIAL OF ACCEPTABLE QUALITY AT NO ADDITIONAL COST TO THE PROJECT.



**4 BOARD ON BOARD WOODEN FENCE**  
N.T.S.

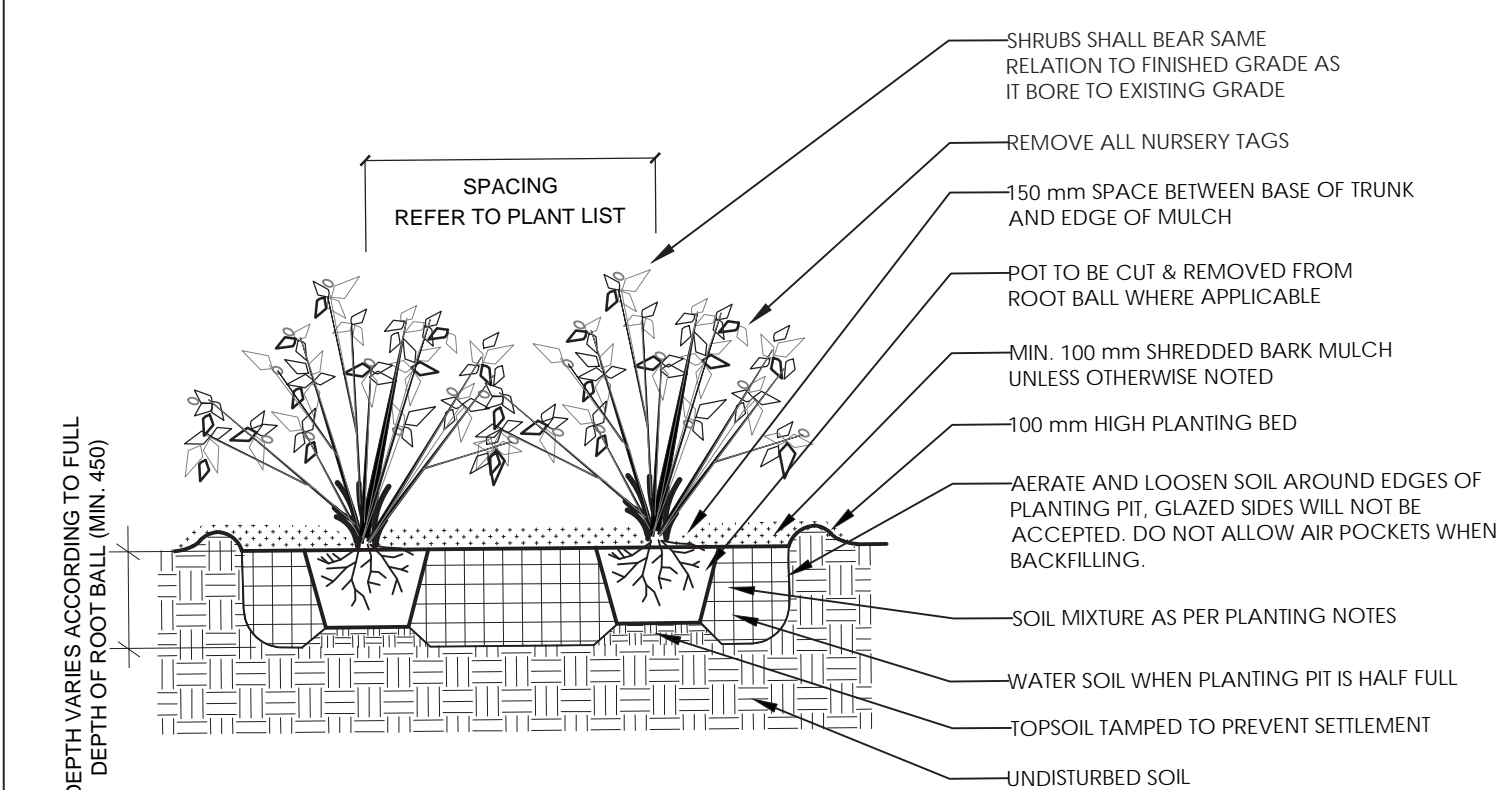


**5 RIVERWASHED STONES**  
N.T.S.

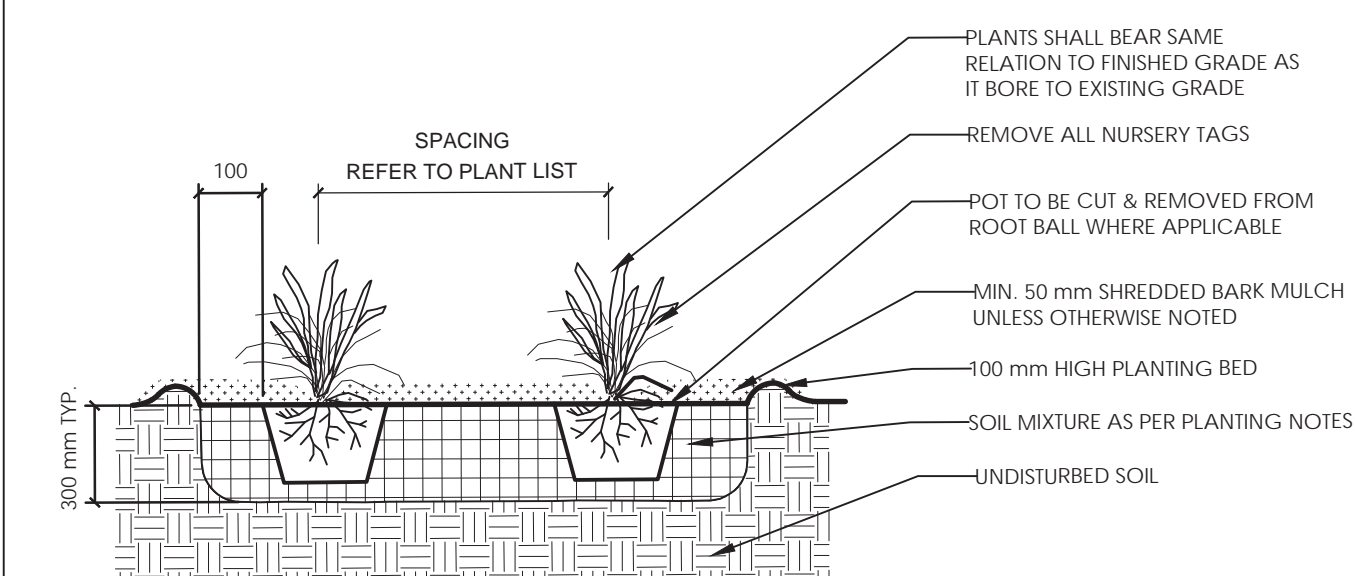


**6 PAVERS**  
N.T.S.

**1 DECIDUOUS TREE PLANTING**  
N.T.S.



**2 SHRUB PLANTING**  
N.T.S.



**3 PERENNIAL PLANTING**  
N.T.S.

Notes

TOPOGRAPHIC SURVEY AND BENCHMARK COMPLETED BY STANTEC GEOMATICS LTD. DATED JULY 10, 2009  
1. SITE PLAN PREPARED BY RUBIN & ROTMAN ARCHITECTS DATED JULY 2018

Revision	By	Appd.	YYYY.MM.DD	
1	ISSUED FOR SITE PLAN APPROVAL	MS	ILL	2018.11.19

Permit Seal



Client/Project  
ROBINSON VILLAGE I LIMITED PARTNERSHIP  
3 STOREY APARTMENT  
19 ROBINSON AVENUE  
OTTAWA, ONTARIO

Title  
LANDSCAPE DETAILS

Project No.	Scale	
160401438	VARIES	
Drawing No.	Sheet	Revision