

Plant List - Trees - 555 Dealership Drive Dan Murphy Ford					
Code	Qty.	Botanical Name	Common Name	Size	Condition
AR	6	Acer rubrum	Red Maple	60mm cal	B + B specimen
AS	5	Acer saccharum	Sugar Maple	60mm cal	B + B specimen
CO	2	Celtis occidentalis	Common Hackberry	60mm cal	B + B specimen
QM	1	Quercus macrocarpa	Burr Oak	60mm cal	B + B specimen
QR	1	Quercus rubra	Red Oak	60mm cal	B + B specimen
AB	4	Abies balsamea	Balsam Fir	1.5m Ht.	B + B specimen
PG	13	Picea glauca	White Spruce	1.5m Ht.	B + B specimen
PS	3	Pinus strobus	White Pine	1.5m Ht.	B + B specimen
Plant List - Shrubs - 555 Dealership Drive Dan Murphy Ford					
Code	Qty.	Botanical Name	Common Name	Size	Condition
HK	610	Hypericum balianum	St. John's Wort	40cm Ht.	Pot

TREES ALONG DEALERSHIP DRIVE BY/AS PER CITIGATE/NOVATECH
5 QUERCUS RUBRA
5 CILTIS OCCIDENTALIS
TREES ALONG CITIGATE DRIVE BY/AS PER CITIGATE/NOVATECH,
- DESIGN NOT COMPLETE TO BE DETERMINED

TURF AREAS TO BE SOD C/W 150MM DEPTH TOPSOIL ON APPROVED SUBGRADE.
SOD TO BE NUMBER ONE GRADE TURFGRASS NURSERY SOD per NSGA - Fine Fescue/Kentucky Bluegrass Sod.
PLANTING MIX TO BE APPROVED BY LANDSCAPE ARCHITECT.

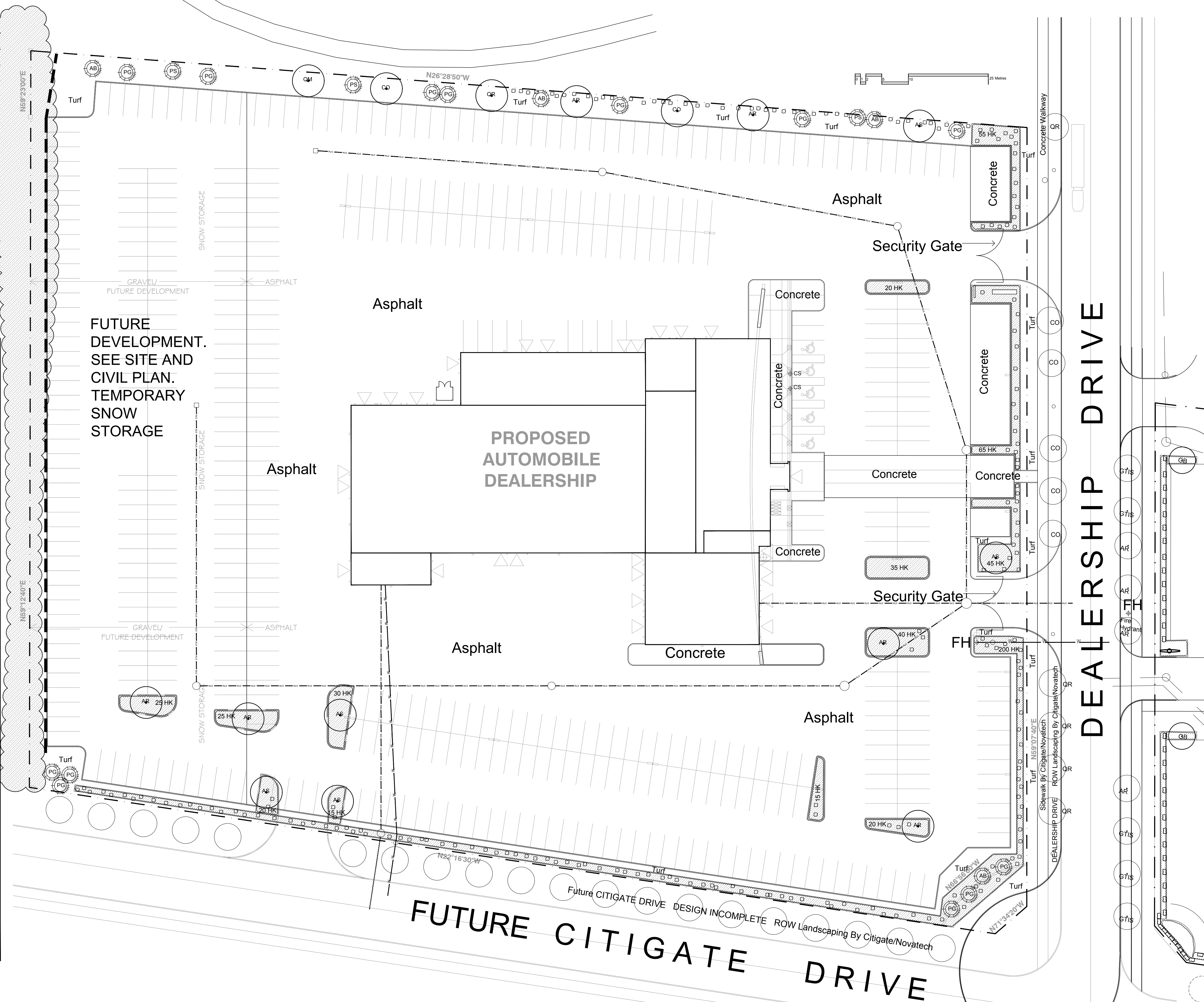
ALL PLANT MATERIAL TO MEET CNLA STANDARDS, AND BE APPROVED BY LANDSCAPE ARCHITECT PRIOR TO PLANTING.
REFER TO CIVIL ENGINEER'S DRAWING FOR ELEVATIONS / GRADING.

ALL WORK TO INCLUDE 1 YEAR WARRANTY FROM DATE OF FINAL ACCEPTANCE.

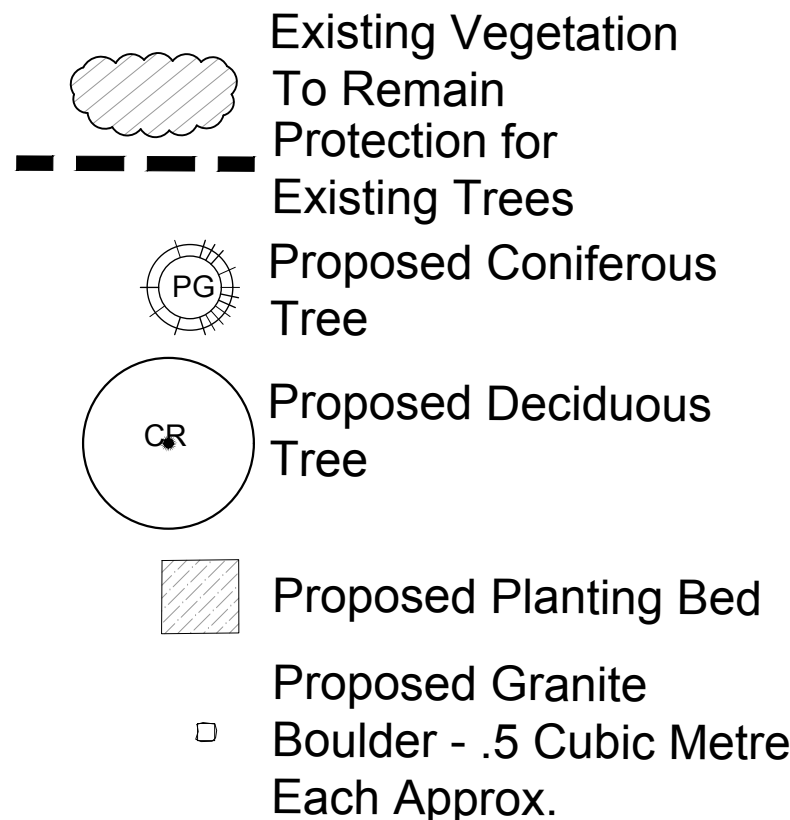
MAINTAIN ALL AREAS UNTIL FINAL ACCEPTANCE, INCLUDING MOWING OF TURF, WEEDING OF BEDS, WATERING, SWEEPING HARD SURFACES.

PROVIDE WATERING OF ALL PLANT MATERIAL AS REQUIRED FOR PROPER ESTABLISHMENT, UNTIL END OF WARRANTY PERIOD.

The Landscape Plan is to be read in conjunction with the grading and survey plan, underground services engineering drawings, construction details and contract documents and cannot be used for construction until signed by the landscape architect. Bare root material to be planted in season only. All plant material locations to be staked on site by the landscape contractor and checked by the landscape architect prior to planting. All trees to be preserved on or directly adjacent to the site will be protected. Plant material are to be installed a minimum of: 3.0m away from any part of any hydro transformer, 3.0m corridor between a fire hydrant and the curb, a 2.5m radius beside or behind a fire hydrant, 2.0m from any servicing/utility line or structure.

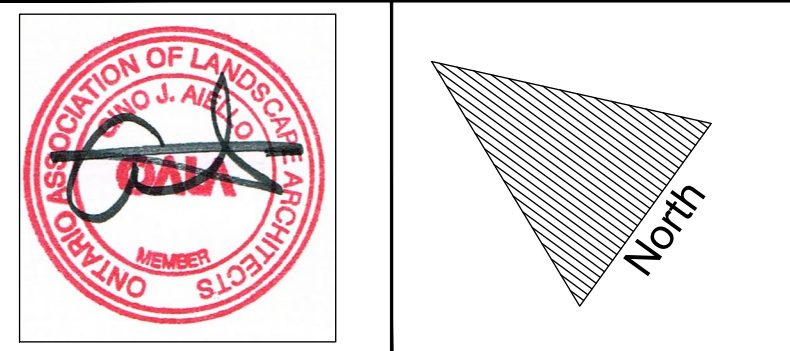


Drawing Remains the Property of Gino J. Aiello
Landscape Architect. Copyright Reserved by Gino J.
Aiello Landscape Architect. Do Not Use or
Reproduce Without Approval of Gino J. Aiello. Do
Not Use For Construction Unless Signed By
Landscape Architect. Contractor is Responsible for
Verification of Site Locations of all Utilities. Report
any Discrepancies Between Site and Drawing
Immediately to Gino J. Aiello.



3	3RD SUBMISSION SITE PLAN CONTROL	November 20 2018
3	2ND SUBMISSION SITE PLAN CONTROL	September 20 2018
2	FIRST SUBMISSION SITE PLAN CONTROL	June 22 2018
1	FOR REVIEW	June 2018
No.	Revision	Date

R E V I S I O N S



Property Owner **Dan Murphy Ford**

Gino J. Aiello landscape architect www.GJALA.com
Gino@GJALA.com (613) 852 1343
110 Didsbury Road Unit # 9 | Ottawa Ontario | K2T 0C2

Project	
Proposed Automobile Dealership	
555 Dealership Drive, Barrhaven	
Drawing	
Landscape Plan	
Drawn By:	GJA
Design By:	
Date:	JUNE 2018
Scale:	1:400
Sheet Number	
L1	

Dwg #17720

D07-12-18-0102