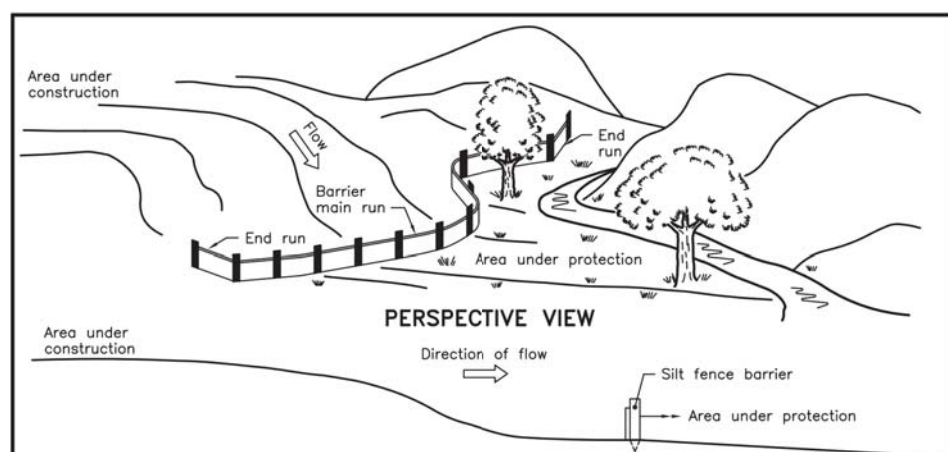
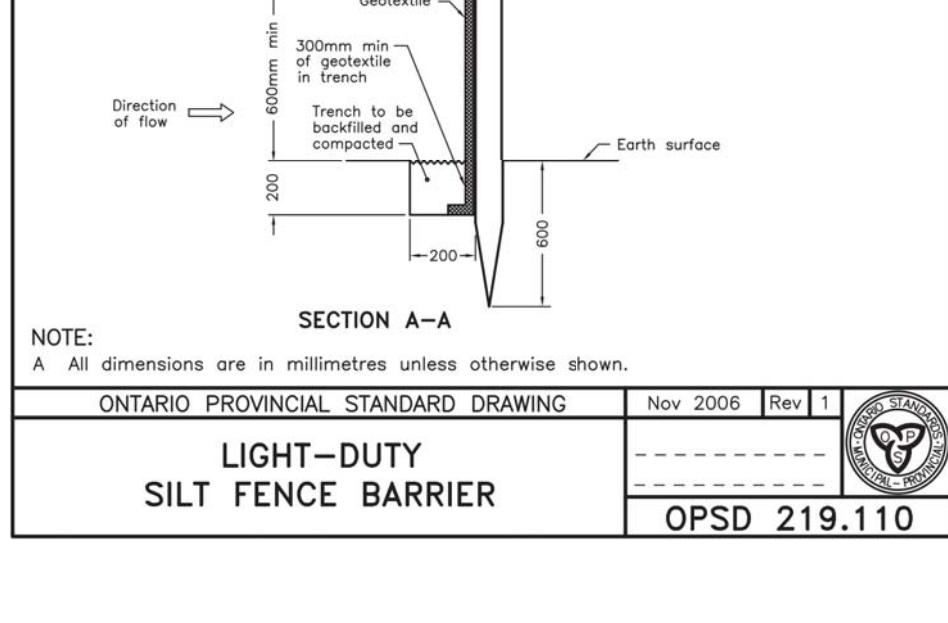


ONTARIO PROVINCIAL STANDARD DRAWING  
Nov 2006 Rev 1



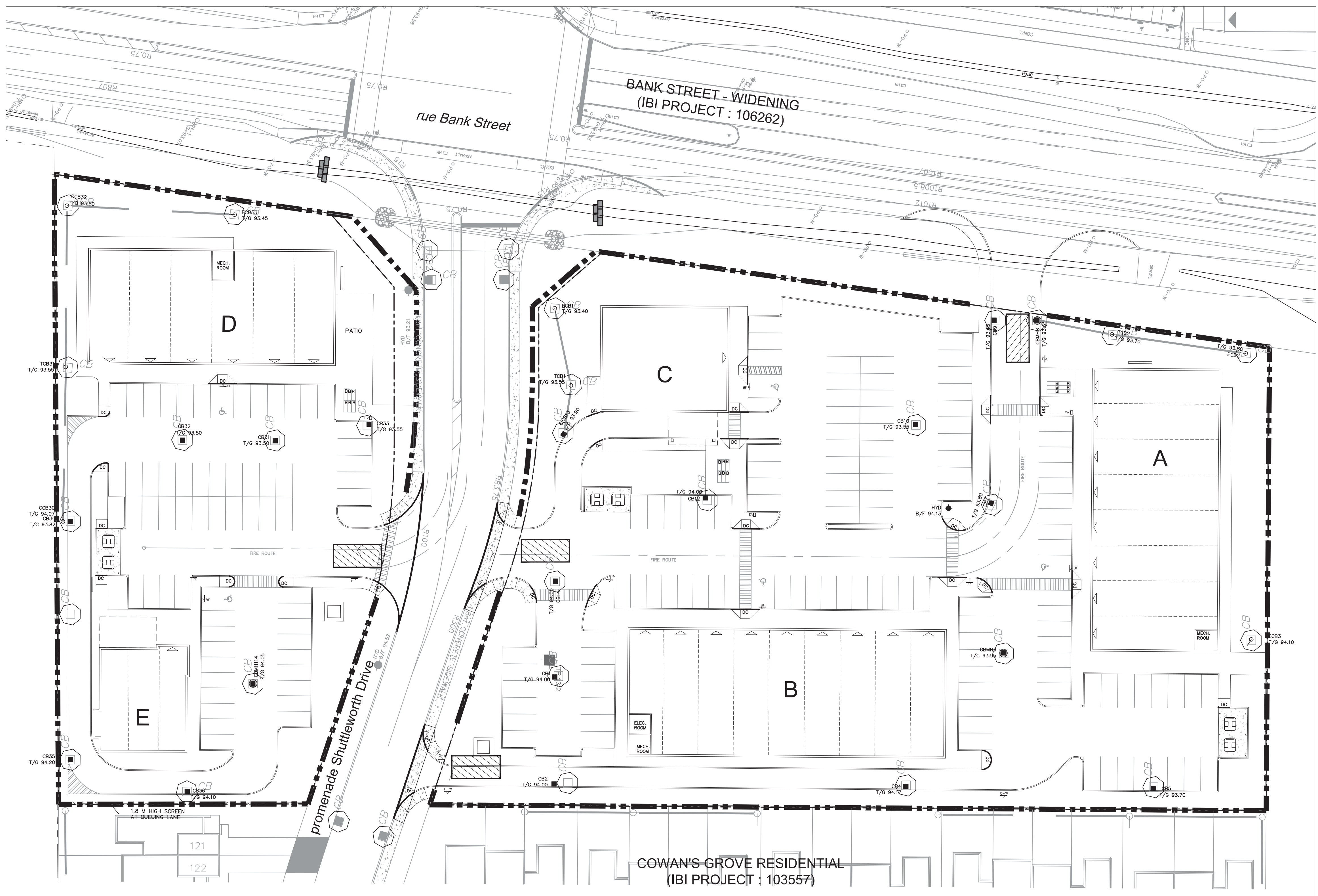
**LIGHT-DUTY SILT FENCE BARRIER**  
OPSD 219.110

ONTARIO PROVINCIAL STANDARD DRAWING  
Nov 2006 Rev 1



**ROCK FLOW CHECK DAM**  
V-DITCH  
OPSD 219.210

ONTARIO PROVINCIAL STANDARD DRAWING  
Nov 2006 Rev 1

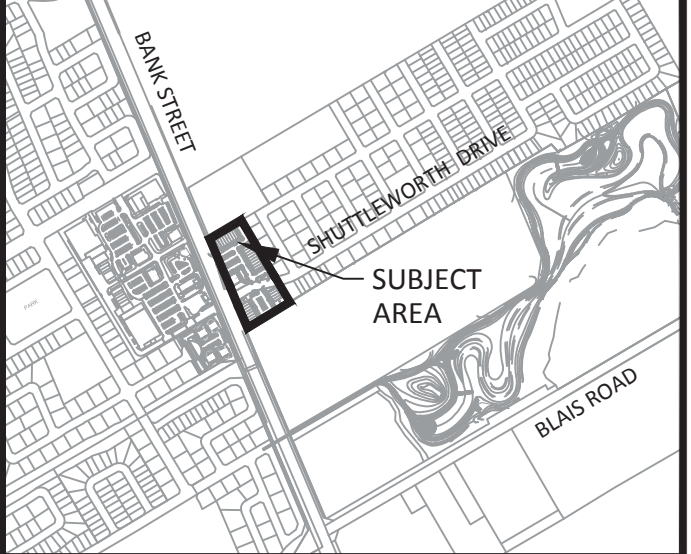


- NOTES:**
- SILT FENCE TO BE ERRECTED PRIOR TO EARTH WORKS BEING COMMENCED. SILT FENCE TO BE MAINTAINED UNTIL VEGETATION IS ESTABLISHED OR UNTIL START OF SUBSEQUENT PHASE.
  - STRAW BALE SEDIMENT TRAPS TO BE CONSTRUCTED IN EXISTING ROAD SIDE DITCHES. TRAPS TO REMAIN AND BE MAINTAINED UNTIL VEGETATION IS ESTABLISHED.
  - SILT SACK TO BE PLACED AND MAINTAINED UNDER COVER OF ALL CATCHBASINS. GEOTEXTILE SILT SACK IN STREET C/S TO REMAIN UNTIL ALL CURBS ARE CONSTRUCTED. GEOTEXTILE FABRIC IN RYCBS TO REMAIN UNTIL VEGETATION IS ESTABLISHED. ALL CATCHBASINS TO BE REGULARLY INSPECTED AND CLEANED, AS NECESSARY, UNTIL SOD AND CURBS ARE CONSTRUCTED.
  - WORKS NOTED ABOVE ARE TO BE INSTALLED, INSPECTED, MAINTAINED AND ULTIMATELY REMOVED BY SERVICING CONTRACTOR.
  - THIS IS A "LIVING DOCUMENT" AND MAY BE MODIFIED IN THE EVENT THE PROPOSED CONTROL MEASURES ARE INSUFFICIENT.

APPROVED  REFUSED

THIS DAY OF \_\_\_\_\_, 20\_\_\_\_

DON HERWEYER, MCIP, RPP  
MANAGER, DEVELOPMENT REVIEW - SOUTH PLANNING, INFRASTRUCTURE & ECONOMIC DEVELOPMENT DEPARTMENT, CITY OF OTTAWA



**NOTES:**

- SEE DRAWING C-010 FOR ADDITIONAL DETAILS AND NOTES.
- SITE BENCHMARK TO BE OBTAINED FROM LEGAL SURVEYOR ANNIS, O'SULLIVAN, VOLLEBECK LTD.

- LEGEND :**
- LIGHT DUTY SILT FENCE AS PER OPSD-219.110
  - SNOW FENCE
  - STRAW BALE CHECK DAM AS PER OPSD-219.180
  - ROCK CHECK DAM AS PER OPSD-219.210
  - SILT SACK PLACED UNDER EXISTING CB COVER
  - TEMPORARY MUD MAT 0.15m THICK 50mm CLEAR STONE ON NON WOVEN FILTER CLOTH

No.	REVISIONS	By	Date
14			
13			
12			
11			
10			
9			
8			
7			
6			
5			
4			
3			
2	REVISED AS PER NEW SITE PLAN AND CITY COMMENTS	T.R.B.	2018/11/14
1	ISSUED FOR SPA	T.R.B.	2018/07/12

**URBANDALE CORPORATION**

**IBI GROUP**  
400 - 333 Preston Street  
Ottawa ON K1S 5N4 Canada  
tel 613 225 1311 fax 613 225 9868  
ibigroup.com

Project Title  
**Cowan's Grove PLAZA**  
4791 BANK STREET

LICENSÉ PROFESSIONNEL EN INGÉNIERIE  
T. R. BRULE  
2018/11/14  
PROVINCE OF ONTARIO

Drawing Title  
**EROSION AND SEDIMENTATION CONTROL PLAN**

Scale: N.T.S.

Design: J.B.	Date: JUNE 2018
Drawn: D.P.S.	Checked: T.R.B.
Project No.: 116871	Drawing No.: 900

D07-12-18-0109