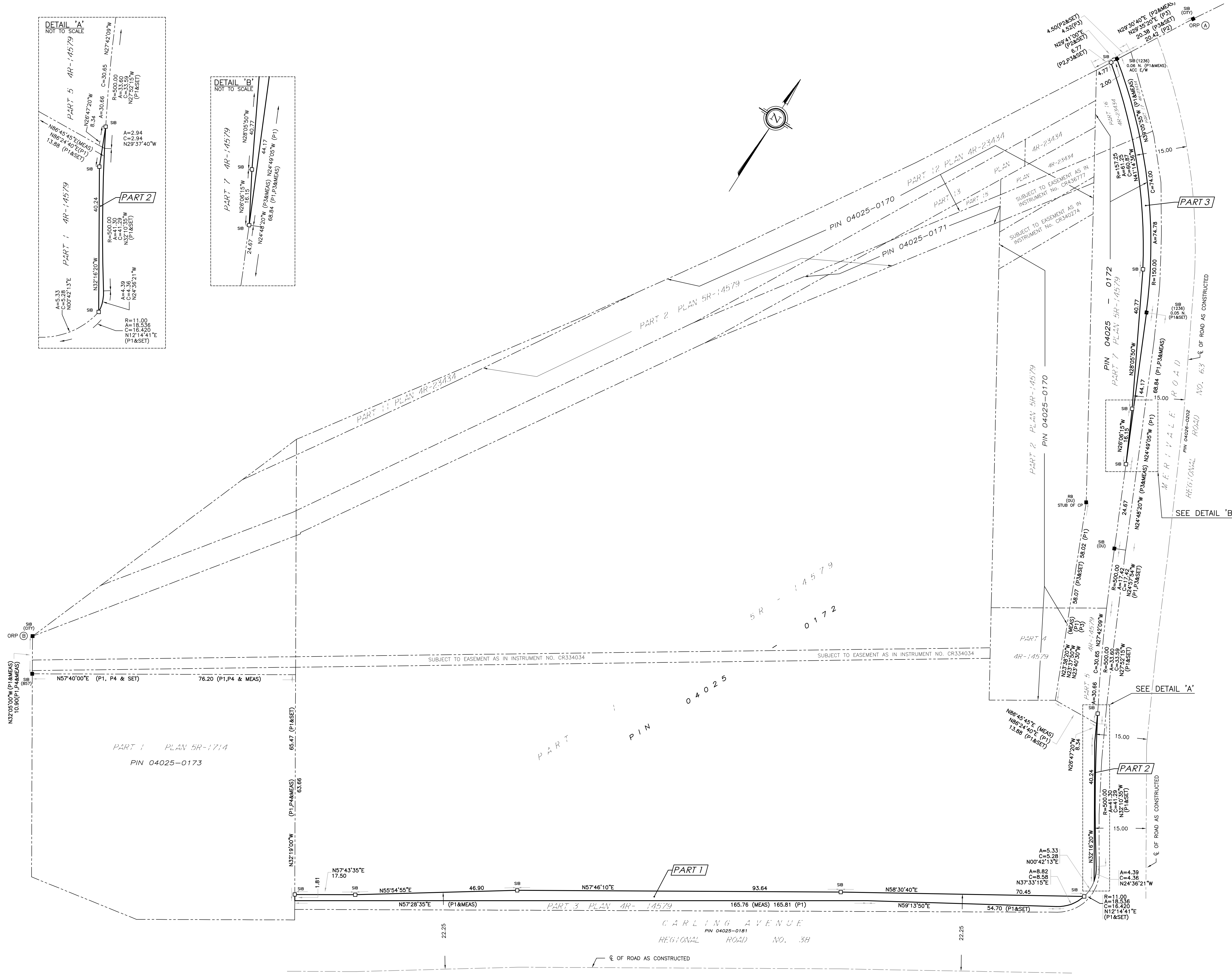
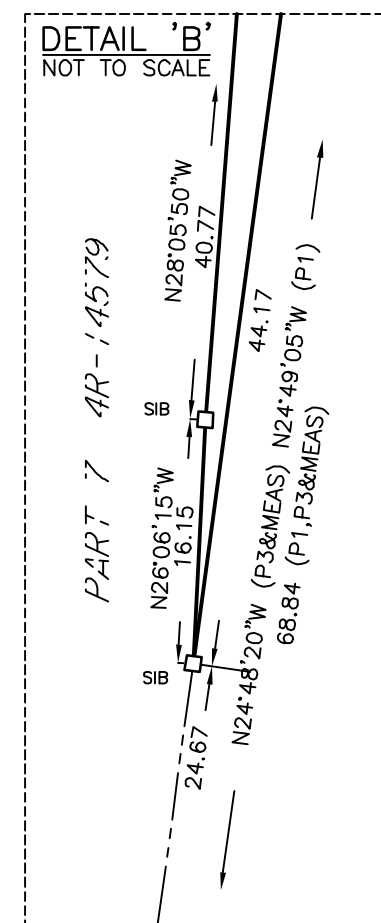
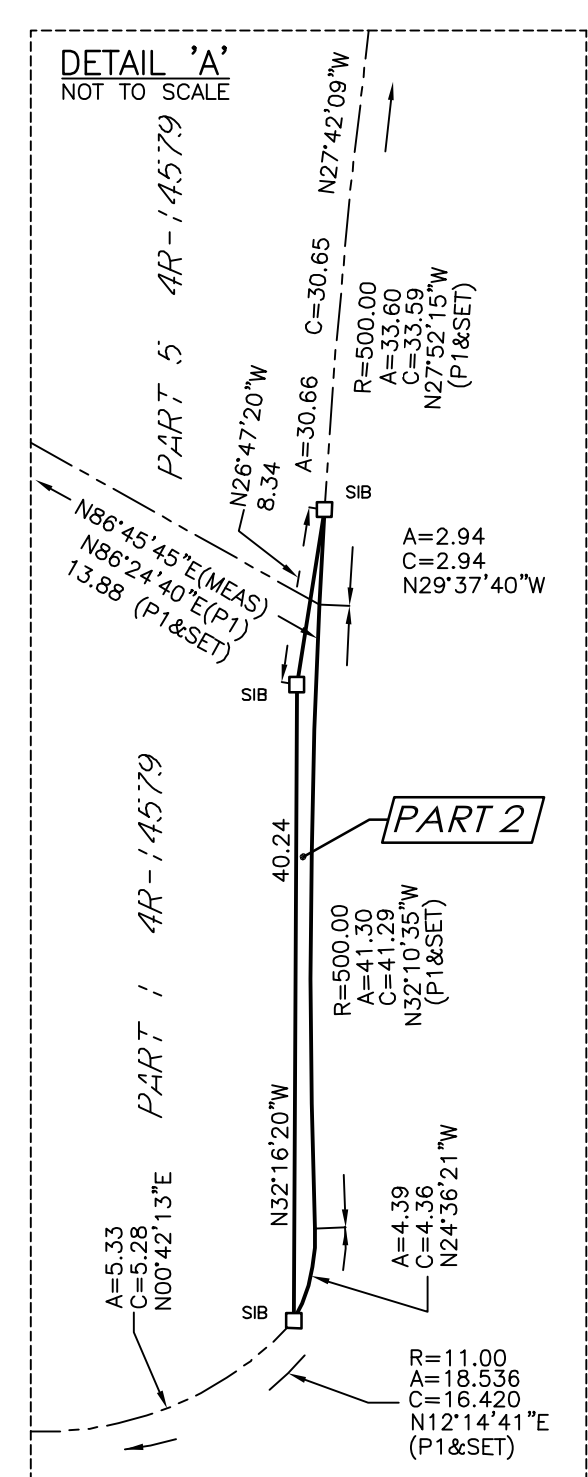


30 September 2015 11:05 AM



I REQUIRE THIS PLAN TO BE DEPOSITED UNDER THE LAND TITLES ACT.

PLAN 4R- _____
RECEIVED AND DEPOSITED

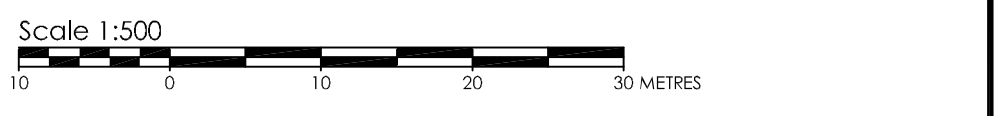
DATE: _____ DATE: _____

BRIAN J. WEBSTER
ONTARIO LAND SURVEYOR

REPRESENTATIVE FOR THE LAND REGISTRAR FOR THE LAND TITLES DIVISION OF OTTAWA-CARLETON (4)

SCHEDULE			
PART	LOT	CONCESSION	PIN
1			
2	PART OF 33	1 (OTTAWA FRONT)	PIN OF 04025-0172
3			

PLAN OF SURVEY OF
**PART OF LOT 33
CONCESSION 1 (OTTAWA FRONT)**
(GEOGRAPHIC TOWNSHIP OF NEPEAN)
CITY OF OTTAWA



METRIC CONVERSION
DISTANCES AND COORDINATES SHOWN ON THIS PLAN ARE IN METRES AND CAN BE CONVERTED TO FEET BY DIVIDING BY 0.3048

GRID SCALE CONVERSION
DISTANCES ARE GROUND AND CAN BE CONVERTED TO GRID BY MULTIPLYING BY THE COMBINED SCALE FACTOR OF 0.9999363.

BEARING NOTE
BEARINGS HEREON ARE GRID BEARINGS DERIVED FROM THE CAN-NET VRS NETWORK AND ARE REFERRED TO THE CENTRAL MERIDIAN 76° 30' WEST LONGITUDE OF THE 3rd MTM ONTARIO COORDINATE SYSTEM, NAD83 (ORIGINAL) ZONE 9.

OBSERVED REFERENCE POINTS DERIVED FROM GPS OBSERVATIONS USING THE CAN-NET VIRTUAL REFERENCE STATION NETWORK:
UTM ZONE 17, NAD83 (CRS) [1997.0].
COORDINATES TO URSAN ACCURACY PER SEC 141(2) OF O-REG. 216/10

POINT ID	NORTHING	EASTING
①	5027948.13	364753.62
②	5027616.80	364566.57

COORDINATES CANNOT, IN THEMSELVES, BE USED TO RE-ESTABLISH CORNERS OR BOUNDARIES SHOWN ON THIS PLAN.

SURVEYOR'S CERTIFICATE
I CERTIFY THAT:
1. THIS SURVEY AND PLAN ARE CORRECT AND IN ACCORDANCE WITH THE SURVEY ACT, THE SURVEYORS ACT AND THE LAND TITLES ACT AND THE REGULATIONS MADE UNDER THEM.
2. THE SURVEY WAS COMPLETED ON THE DAY OF, 2015.

DATE: _____
BRIAN J. WEBSTER
ONTARIO LAND SURVEYOR

LEGEND

SYMBOL	DENOTES	FOUND MONUMENTS
■	SET MONUMENTS	
●	IRON BAR	
○	ROUND IRON BAR	
⊖	STANDARD IRON BAR	
⊕	SHORT STANDARD IRON BAR	
⊗	CUT CROSS	
⊙	CONCRETE PIN	
WT	WITNESS	
PIN	PROPERTY IDENTIFICATION NUMBER	
MEAS	MEASURED	
PROP	PROPORTIONED	
OU	ORIGIN UNKNOWN	
STANTEC	STANTEC GEOMATICS LTD.	
P1	PLAN 5R-14579	
P2	PLAN 4R-20902	
P3	PLAN 4R-23434	
P4	PLAN OF SURVEY BY FAIRHALL MOFFATT WOODLAND O.L.S. DATED JUNE 2, 1981.	

Stantec Geomatics Ltd.
CANADA AND ONTARIO LAND SURVEYORS
1331 CLOYE AVENUE, SUITE 400
OTTAWA, ONTARIO, K2C 3G4
TEL. (613) 722-4420 FAX. (613) 722-2799
stantec.com

DRAWN: CEC CHECKED: * PM: BW FIELD: * PROJECT NO.: 161613355-114