

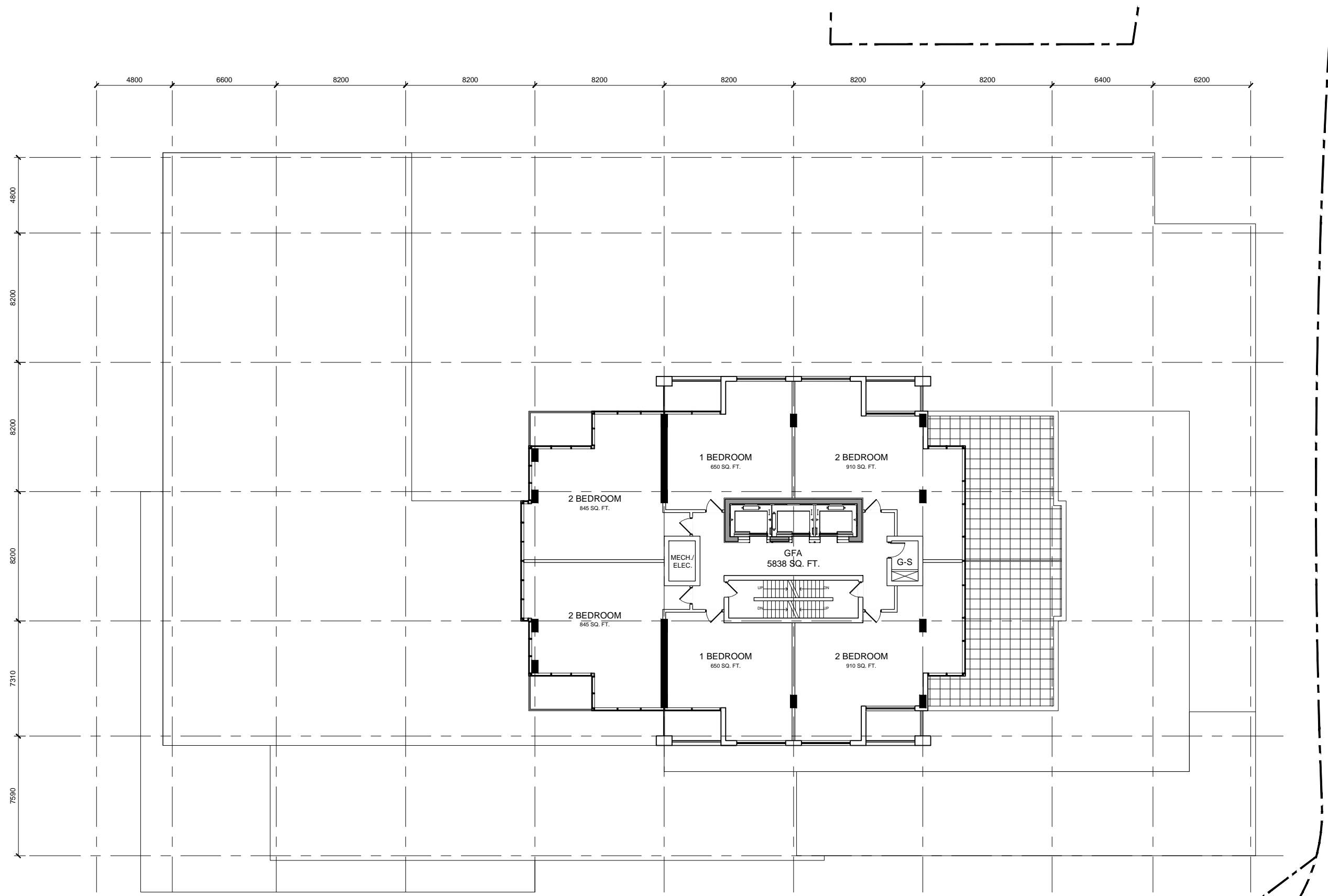
IT IS THE RESPONSIBILITY OF THE APPROPRIATE CONTRACTOR TO CHECK AND VERIFY ALL DIMENSIONS ON SITE AND TO REPORT ALL ERRORS AND/OR OMISSIONS TO THE ARCHITECT.
 ALL CONTRACTORS MUST COMPLY WITH ALL PERTINENT CODES AND BY-LAWS.
 THIS DRAWING MAY NOT BE USED FOR CONSTRUCTION UNTIL SIGNED BY THE ARCHITECT.
 DO NOT SCALE DRAWINGS.
 COPYRIGHT RESERVED.

NOTATION SYMBOLS:

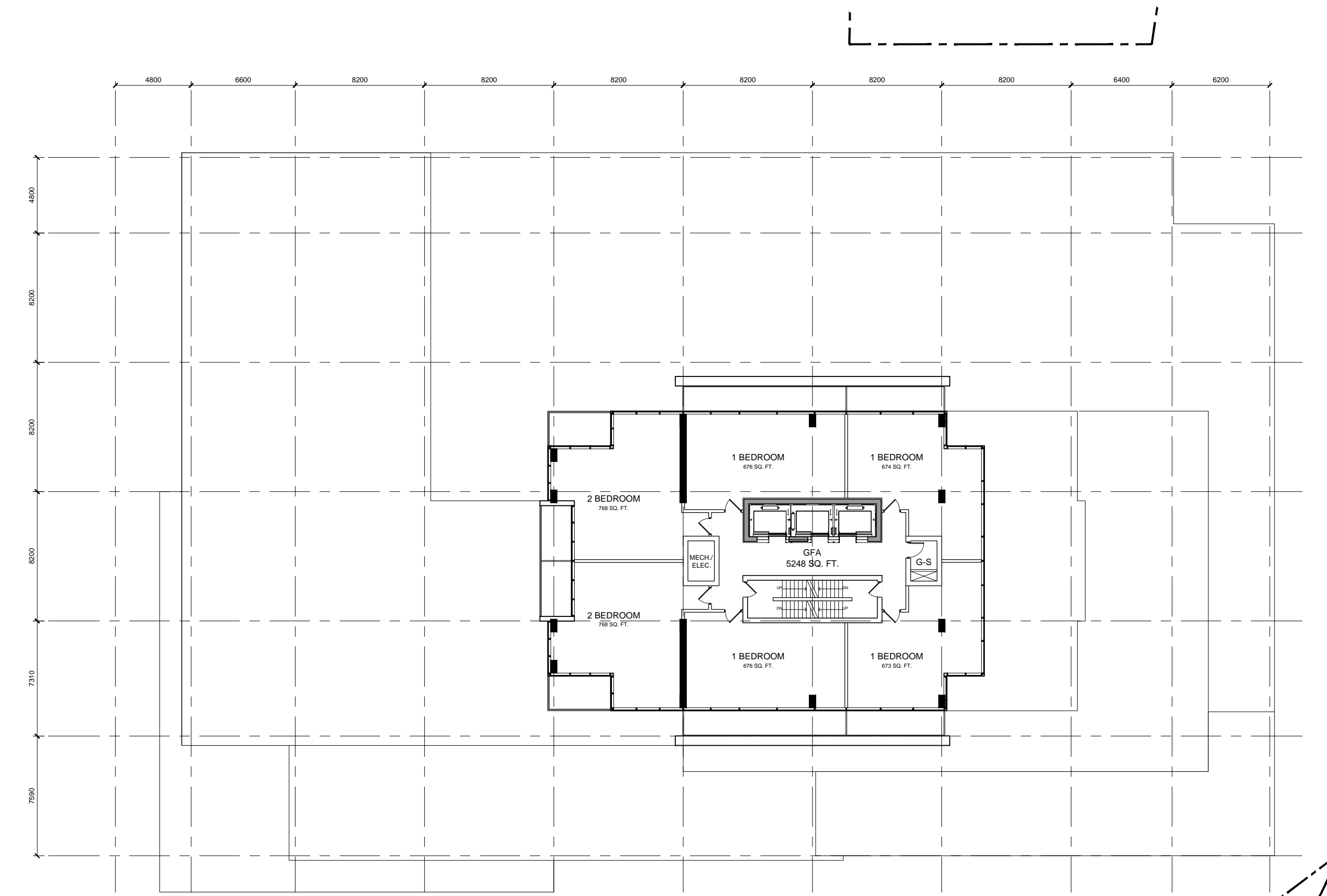
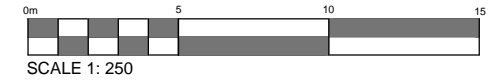
- (01) INDICATES DRAWING NOTES, LISTED ON EACH SHEET.
- (02) INDICATES ASSEMBLY TYPE; REFER TO TYPICAL ASSEMBLIES SCHEDULE.
- (03) INDICATES WINDOW TYPE; REFER TO WINDOW ELEVATIONS AND DETAILS ON A300 SERIES.
- (04) INDICATES DOOR TYPE; REFER TO DOOR SCHEDULE AND DETAILS ON A300 SERIES.
- DETAIL NUMBER
- (05) TITLE SCALE
- DETAIL REFERENCE PAGE
- DETAIL CROSS REFERENCE PAGE

LRT ALIGNMENT DISCLAIMER

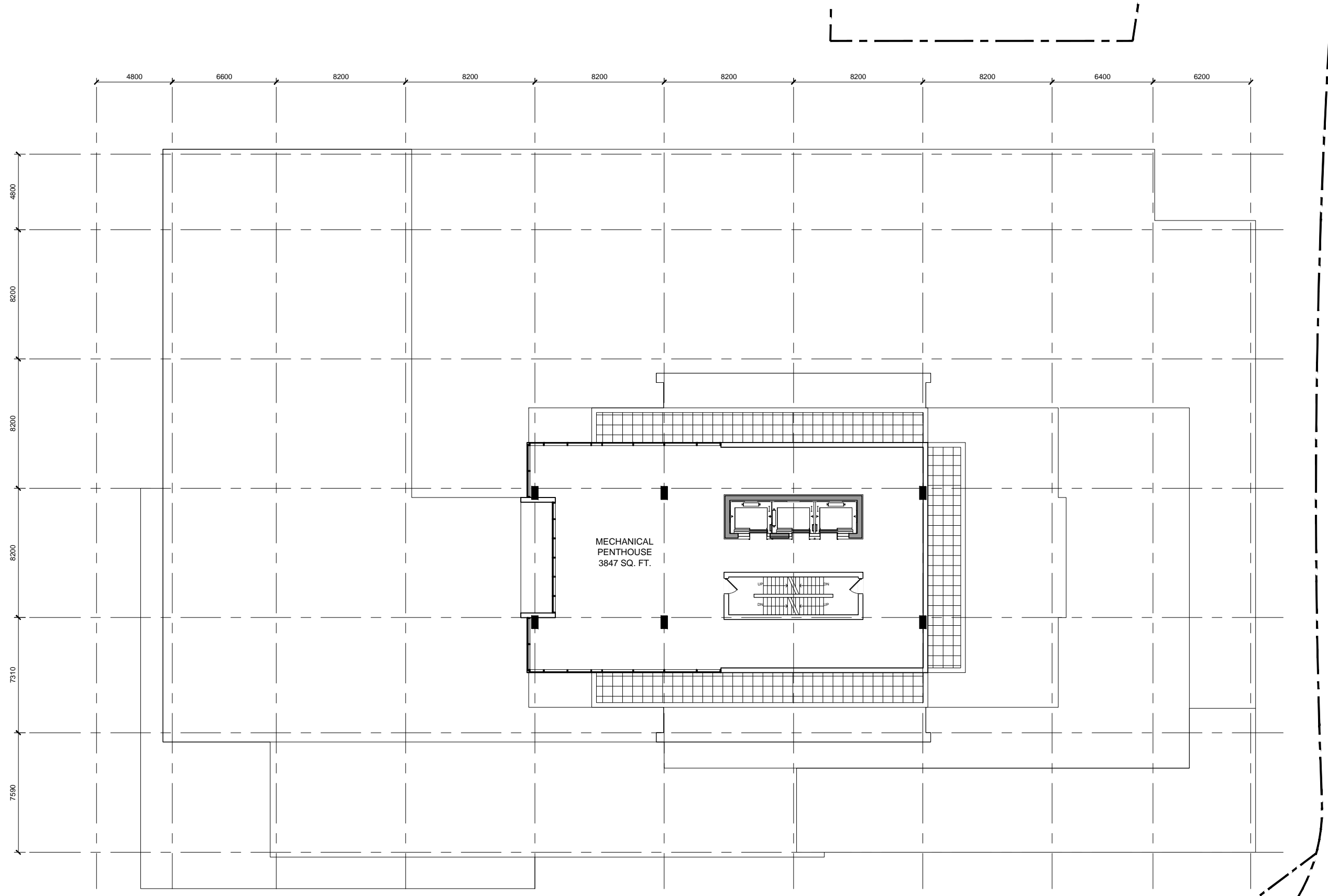
APPROXIMATE LRT TUNNEL AND SHORING ALLOWANCE LOCATION TAKEN FROM CITY OF OTTAWA DRAWINGS CONFEDERATION LINE WEST LRT EXTENSION - TUNNEY'S PASTURE STATION TO BASELINE STATION; PLAN AND PROFILE - NEW ORCHARD STATION 56-170 - 56-172 SHEET 16, DATED JUNE 2, 2016 & GENERAL ARRANGEMENT - RICHMOND ROAD TUNNEL SHEET 102, DATED FEBRUARY 10, 2016



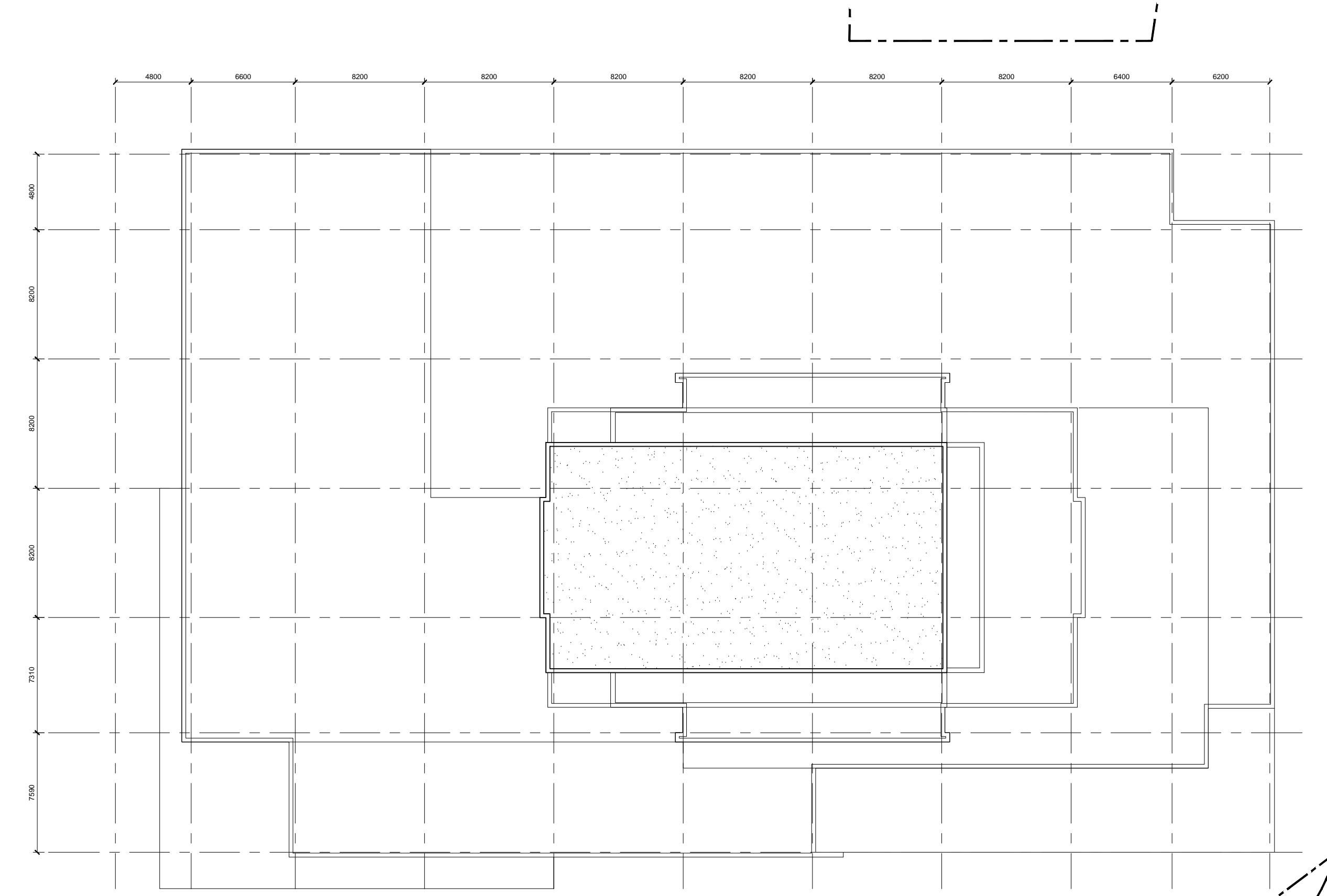
21-22 FLOOR TYPICAL
(8 UNITS OPTION C)



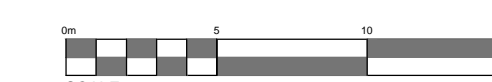
23-24 FLOOR TYPICAL
(8 UNITS OPTION C)



MECH. PENTHOUSE



ROOF PLAN



2	ISSUED FOR SITE PLAN CONTROL	Oct. 31, 18
1	ISSUED FOR ZONING AMENDMENT	Dec. 21, 15
No.	DESCRIPTION	DATE

REVISIONS:

ARCHITECT SEAL: NORTH ARROW:

SEAL DATE: STAMP DATE

CLIENT:

RIO CAN
REAL ESTATE INVESTMENT TRUST

ARCHITECT:
rla/architecture
56 Beech Street, Ottawa, Ontario K1S 3J6
1.613.724.9932 1.613.724.1209 www.rodericklahey.ca

PROJECT TITLE:
WESTGATE
1309 CARLING AVENUE
OTTAWA ONTARIO

SHEET TITLE:
FLOOR PLANS

DRAWN: RV	CHECKED: RLA
SCALE: 1:250	SHEET No. A103
PROJECT No. 1807	

000-00-00-0000