

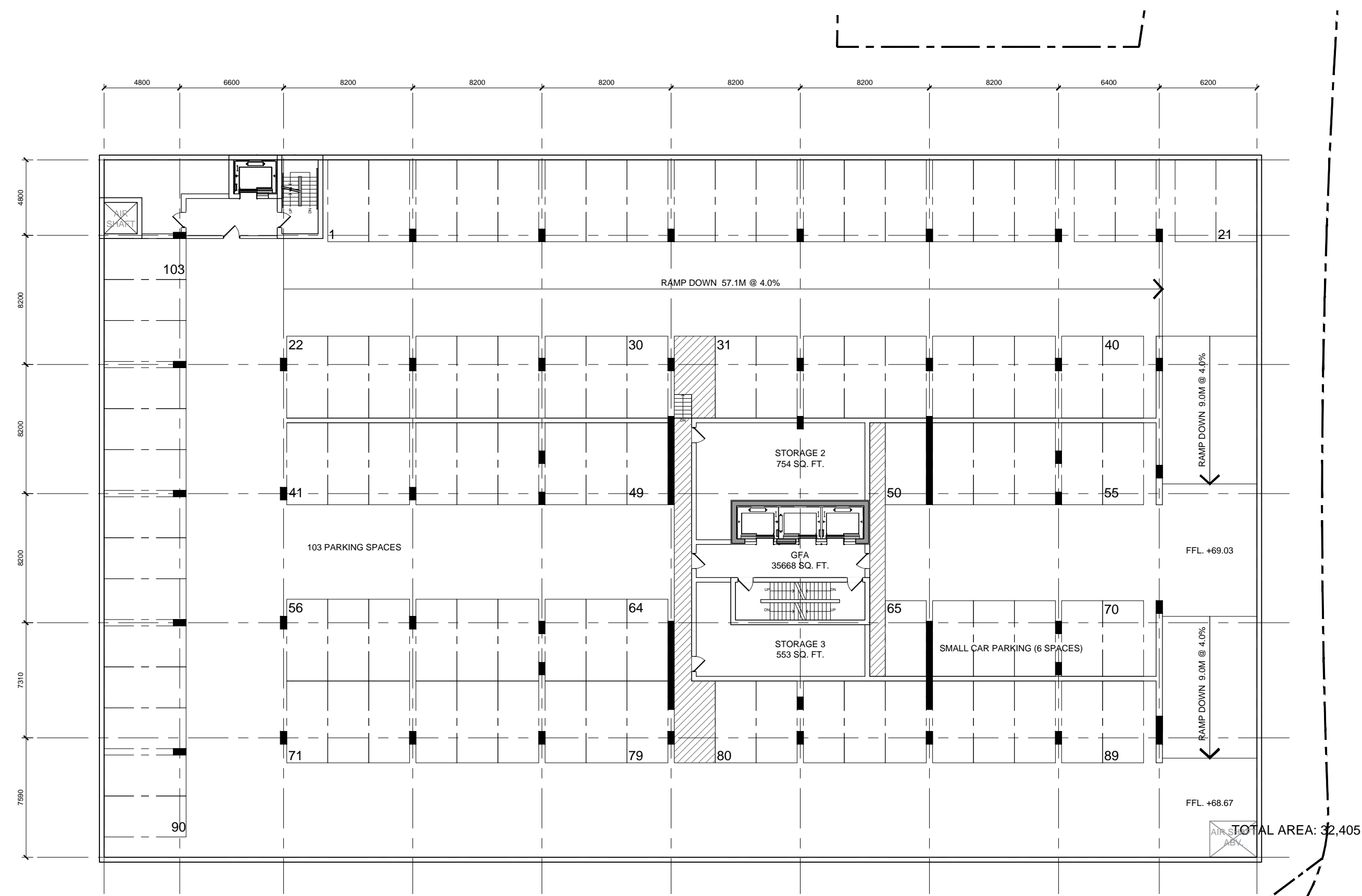
IT IS THE RESPONSIBILITY OF THE APPROPRIATE CONTRACTOR TO CHECK AND VERIFY ALL DIMENSIONS ON SITE AND TO REPORT ALL ERRORS AND/OR OMISSIONS TO THE ARCHITECT.
 ALL CONTRACTORS MUST COMPLY WITH ALL PERTINENT CODES AND BY-LAWS.
 THIS DRAWING MAY NOT BE USED FOR CONSTRUCTION UNTIL SIGNED BY THE ARCHITECT.
 DO NOT SCALE DRAWINGS.
 COPYRIGHT RESERVED.

NOTATION SYMBOLS:

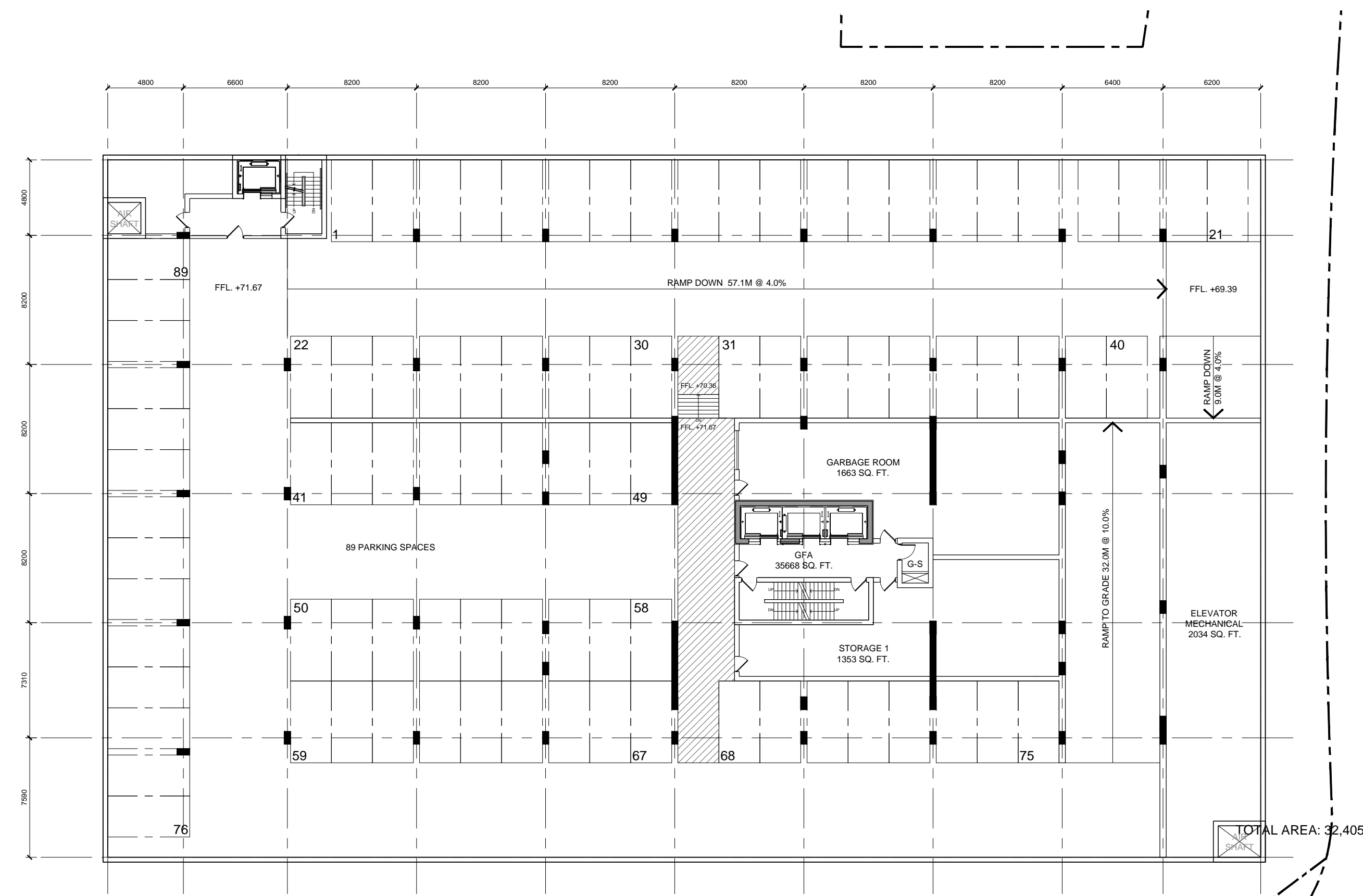
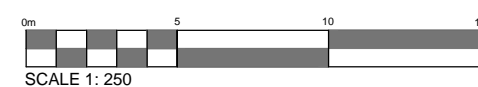
- (01) INDICATES DRAWING NOTES, LISTED ON EACH SHEET.
- (02) INDICATES ASSEMBLY TYPE: REFER TO TYPICAL ASSEMBLIES SCHEDULE.
- (03) INDICATES WINDOW TYPE: REFER TO WINDOW ELEVATIONS AND DETAILS ON A300 SERIES.
- (04) INDICATES DOOR TYPE: REFER TO DOOR SCHEDULE AND DETAILS ON A300 SERIES.
- (05) INDICATES DETAIL NUMBER.
- (06) TITLE
- (07) SCALE
- (08) DETAIL REFERENCE PAGE
- (09) DETAIL CROSS REFERENCE PAGE

LRT ALIGNMENT DISCLAIMER

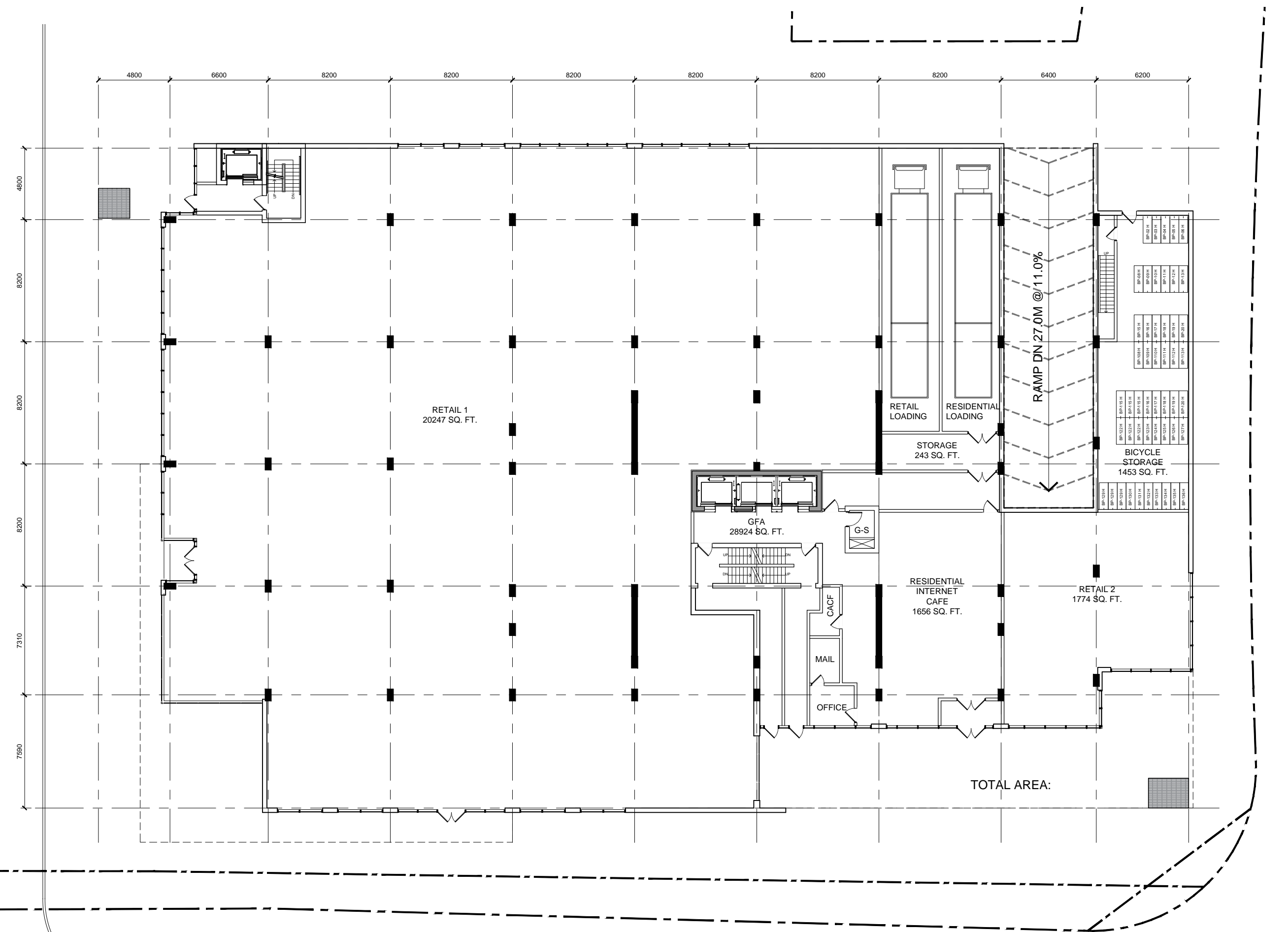
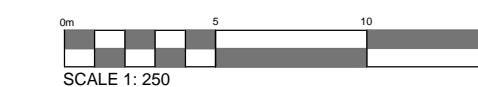
APPROXIMATE LRT TUNNEL AND SHORING ALLOWANCE LOCATION TAKEN FROM CITY OF OTTAWA DRAWINGS CONFEDERATION LINE WEST LRT EXTENSION - TUNNEY'S PASTURE STATION TO BASELINE STATION; PLAN AND PROFILE - NEW ORCHARD STATION 56+170 - 56+172 SHEET 16, DATED JUNE 2, 2016 & GENERAL ARRANGEMENT - RICHMOND ROAD TUNNEL SHEET 102, DATED FEBRUARY 10, 2016



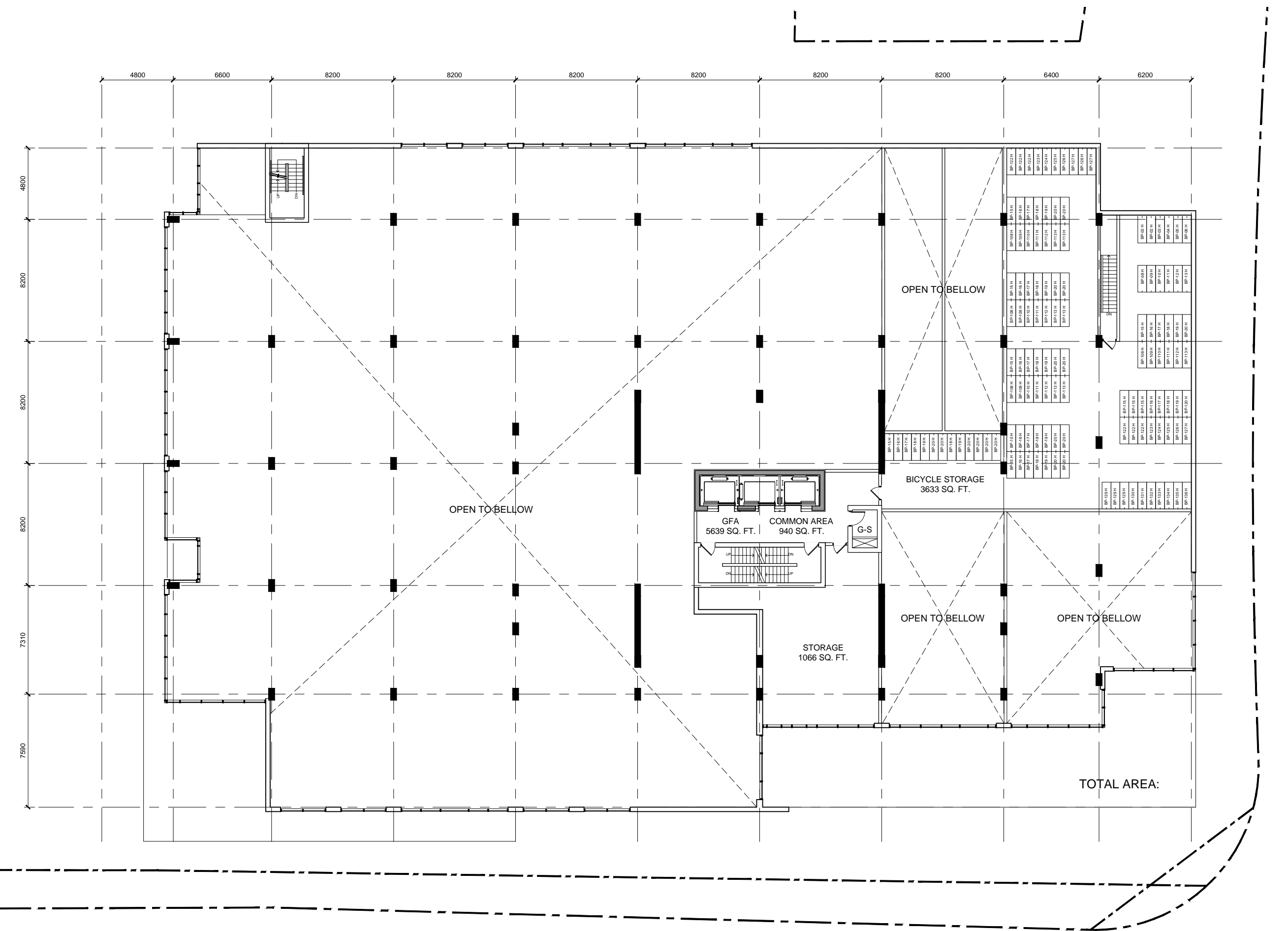
P2 PARKING LEVEL



P1 PARKING LEVEL



GROUND



MEZZANINE



ISSUED FOR SITE PLAN CONTROL	Oct. 31, 18
ISSUED FOR ZONING AMENDMENT	Dec. 21, 15
No. DESCRIPTION	DATE

REVISIONS:

ARCHITECT SEAL: NORTH ARROW:

SEAL DATE: STAMP DATE

CLIENT:

RIO CAN
 REAL ESTATE INVESTMENT TRUST

ARCHITECT:
 rla/architecture
 56 Beech Street, Ottawa, Ontario K1S 3J6
 t.613.724.9932 f.613.724.1209 www.rodericklahey.ca

PROJECT TITLE:
WESTGATE
 1309 CARLING AVENUE
 OTTAWA ONTARIO

SHEET TITLE:
SITE PLAN

DRAWN: RV	CHECKED: RLA
SCALE: 1:250	SHEET No. A101
PROJECT No. 1807	

000-00-00-0000