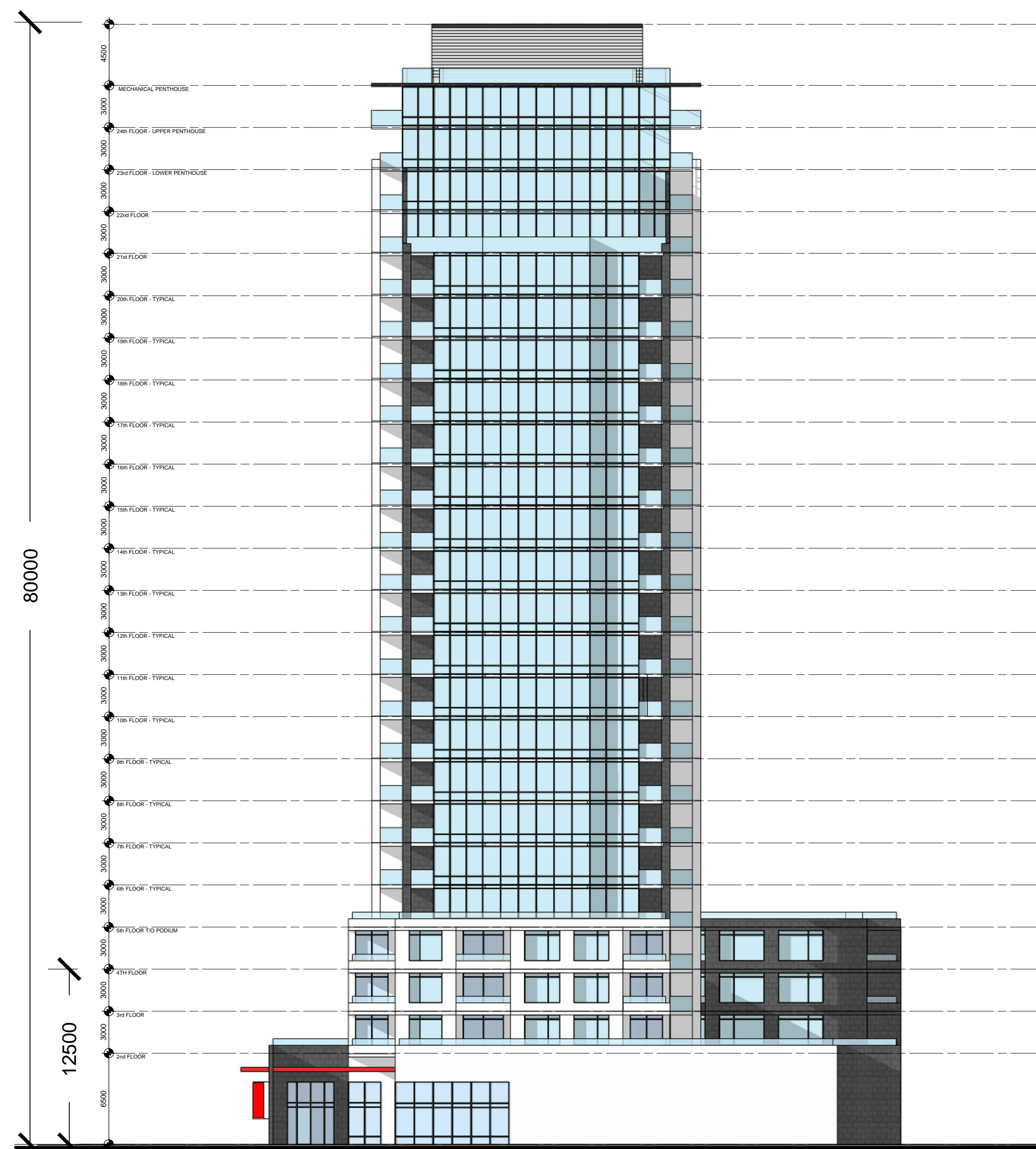
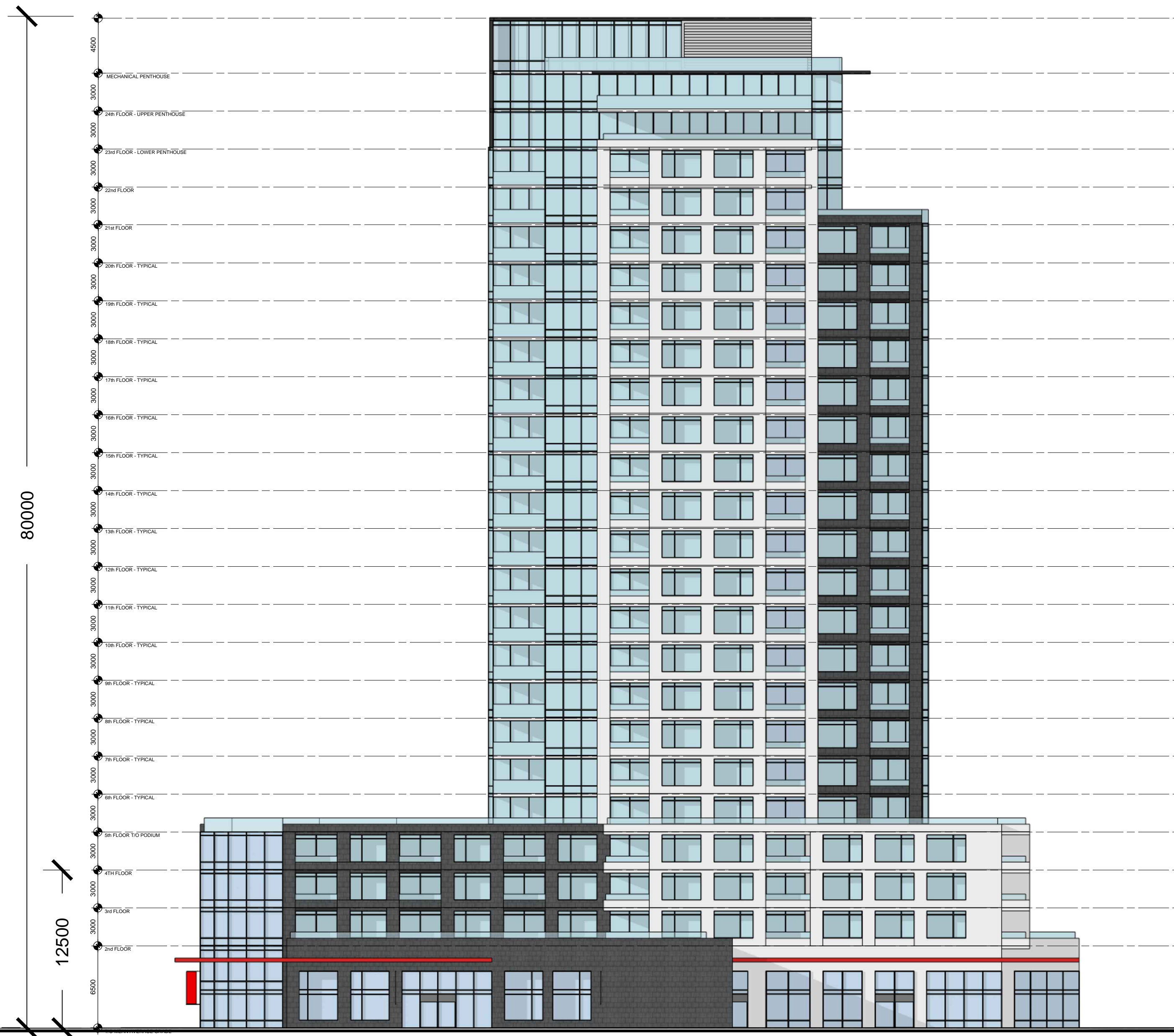


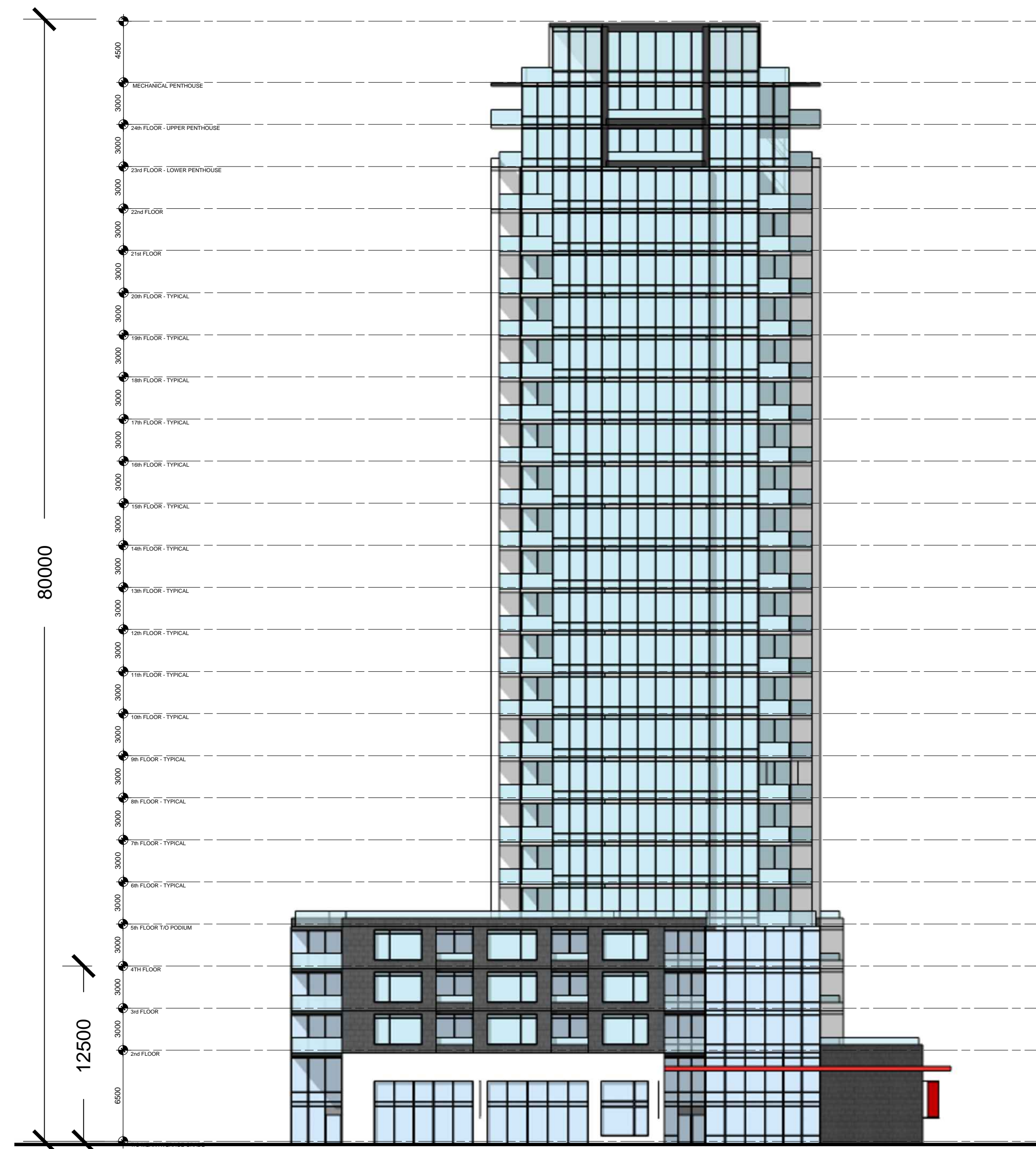
EAST ELEVATION



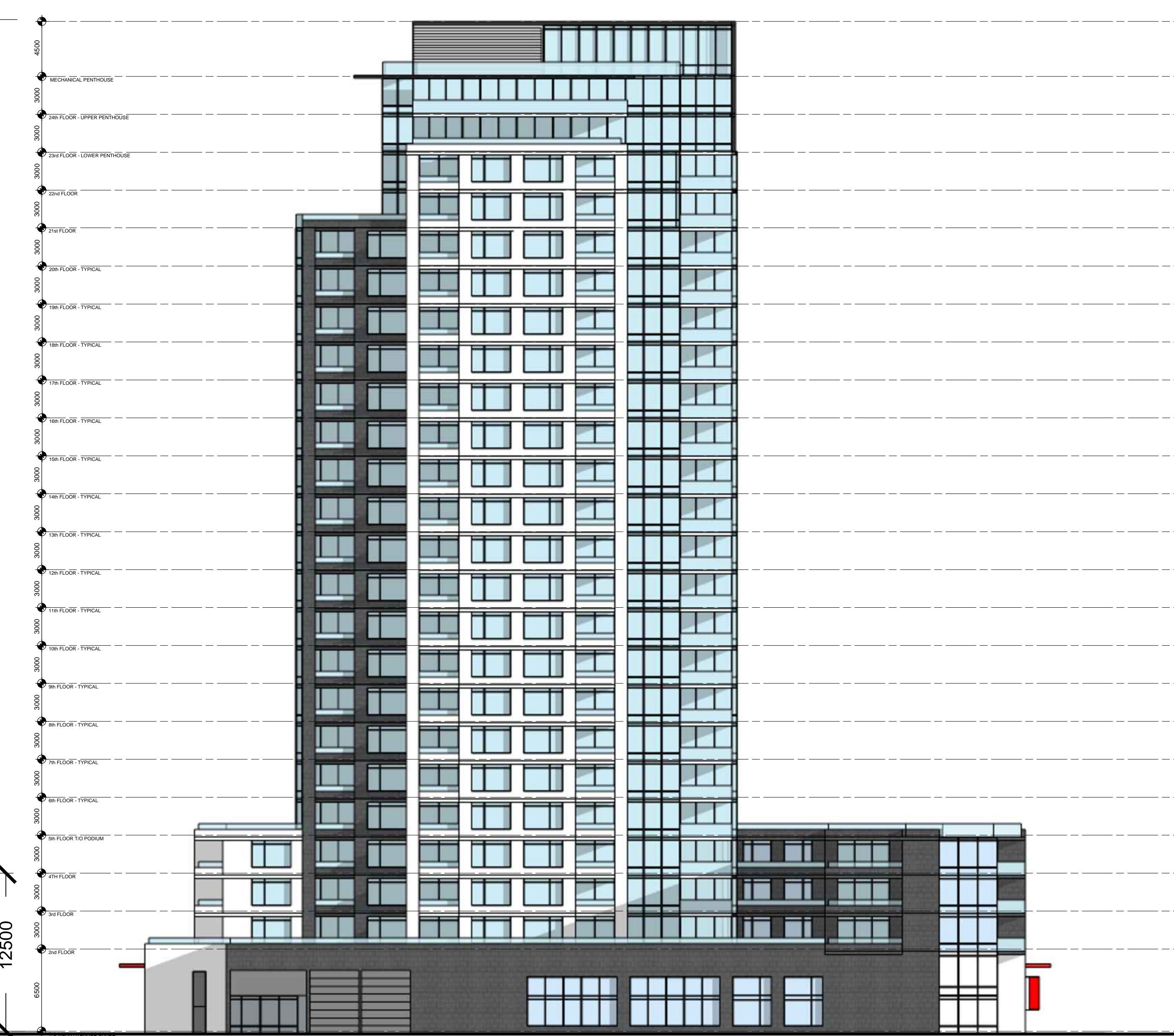
SOUTH ELEVATION



WEST ELEVATION



NORTH ELEVATION



IT IS THE RESPONSIBILITY OF THE APPROPRIATE CONTRACTOR TO CHECK AND VERIFY ALL DIMENSIONS ON SITE AND TO REPORT ALL ERRORS AND/OR OMISSIONS TO THE ARCHITECT.
ALL CONTRACTORS MUST COMPLY WITH ALL PERTINENT CODES AND BY-LAWS.
THIS DRAWING MAY NOT BE USED FOR CONSTRUCTION UNTIL SIGNED BY THE ARCHITECT.
DO NOT SCALE DRAWINGS.
COPYRIGHT RESERVED.


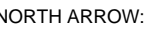
NOTATION SYMBOLS:

- (N) INDICATES DRAWING NOTES, LISTED ON EACH SHEET.
- (A) INDICATES ASSEMBLY TYPE; REFER TO TYPICAL ASSEMBLIES SCHEDULE.
- (W) INDICATES WINDOW TYPE; REFER TO WINDOW ELEVATIONS AND DETAILS ON A300 SERIES.
- (D) INDICATES DOOR TYPE; REFER TO DOOR SCHEDULE AND DETAILS ON A300 SERIES.
- DETAIL NUMBER
- (R) TITLE
- (S) SCIT
- (R) DETAIL REFERENCE PAGE
- (R) DETAIL CROSS REFERENCE PAGE

LRT ALIGNMENT DISCLAIMER
APPROXIMATE LRT TUNNEL AND SHORING ALLOWANCE LOCATION TAKEN FROM CITY OF OTTAWA DRAWINGS CONFEDERATION LINE WEST LRT EXTENSION - TUNNEY'S PASTURE STATION TO BASELINE STATION; PLAN AND PROFILE - NEW ORCHARD STATION 66+170 - 66+170 SHEET, DATED JUNE 2, 2016 & GENERAL ARRANGEMENT - RICHMOND ROAD TUNNEL SHEET 102, DATED FEBRUARY 10, 2016

ISSUED FOR SITE PLAN CONTROL	Oct. 31, 18
ISSUED FOR ZONING AMENDMENT	Dec. 21, 15
No. DESCRIPTION	DATE

REVISIONS:

ARCHITECT SEAL:  NORTH ARROW: 

SEAL DATE: STAMP DATE

CLIENT:

RIO CAN
REAL ESTATE INVESTMENT TRUST

ARCHITECT:
rla/architecture
56 Beech Street, Ottawa, Ontario K1S 3J6
t.613.724.9932 f.613.724.1209 www.rodericklahey.ca

PROJECT TITLE:
WESTGATE
1309 CARLING AVENUE
OTTAWA ONTARIO

SHEET TITLE:
BUILDING ELEVATIONS

DRAWN: RV	CHECKED: RLA
SCALE: 1:250	SHEET No.:
PROJECT No.:	A201
1807	

000-00-00-0000