


4	AUG. 8/18	ISSUED IN RESPONSE TO SECOND ROUND OF SITE PLAN COMMENTS
3	JUN. 20/18	ISSUED IN RESPONSE TO SITE PLAN COMMENTS
2	JUN. 7/18	ISSUED FOR CLIENT REVIEW
1	APR. 6/18	ISSUED FOR CLIENT REVIEW

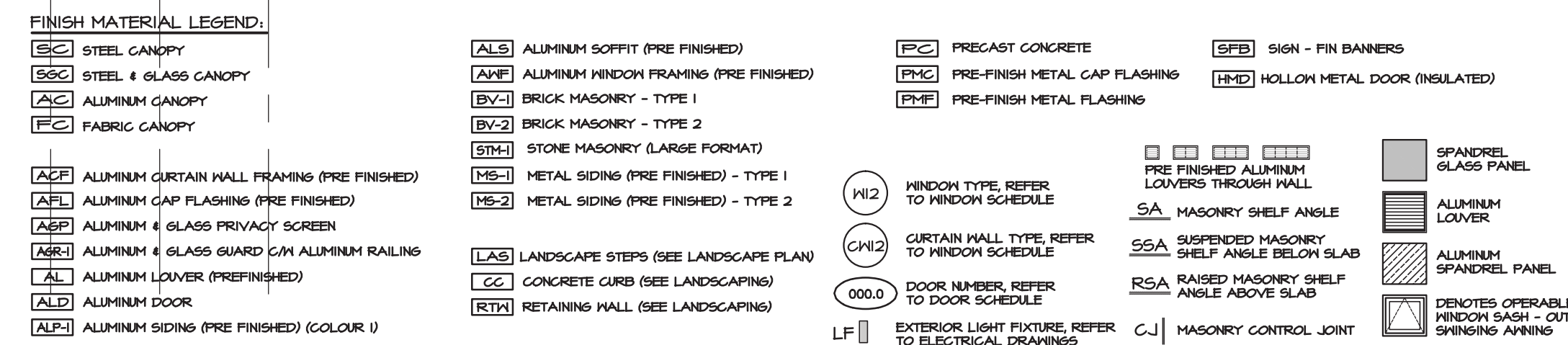
ONTARIO ASSOCIATION
ARCHITECTS
J. MOBIN
LICENCE
3049

PROJECT/LOCATION:
890-900 BANK STREET
REDEVELOPMENT
890/900 Bank St., Ottawa ON

DRAWING TITLE:
NORTH EXTERIOR
ELEVATION

DRAWN BY: SD/ML	DATE: FEBRUARY 2018	SCALE: 1:100
		PROJECT: 1801 <hr/> DRAWING NO. <div style="font-size: 2em; font-weight: bold; margin-top: 10px;">A3.01</div>
		REVISION NO.

#17784



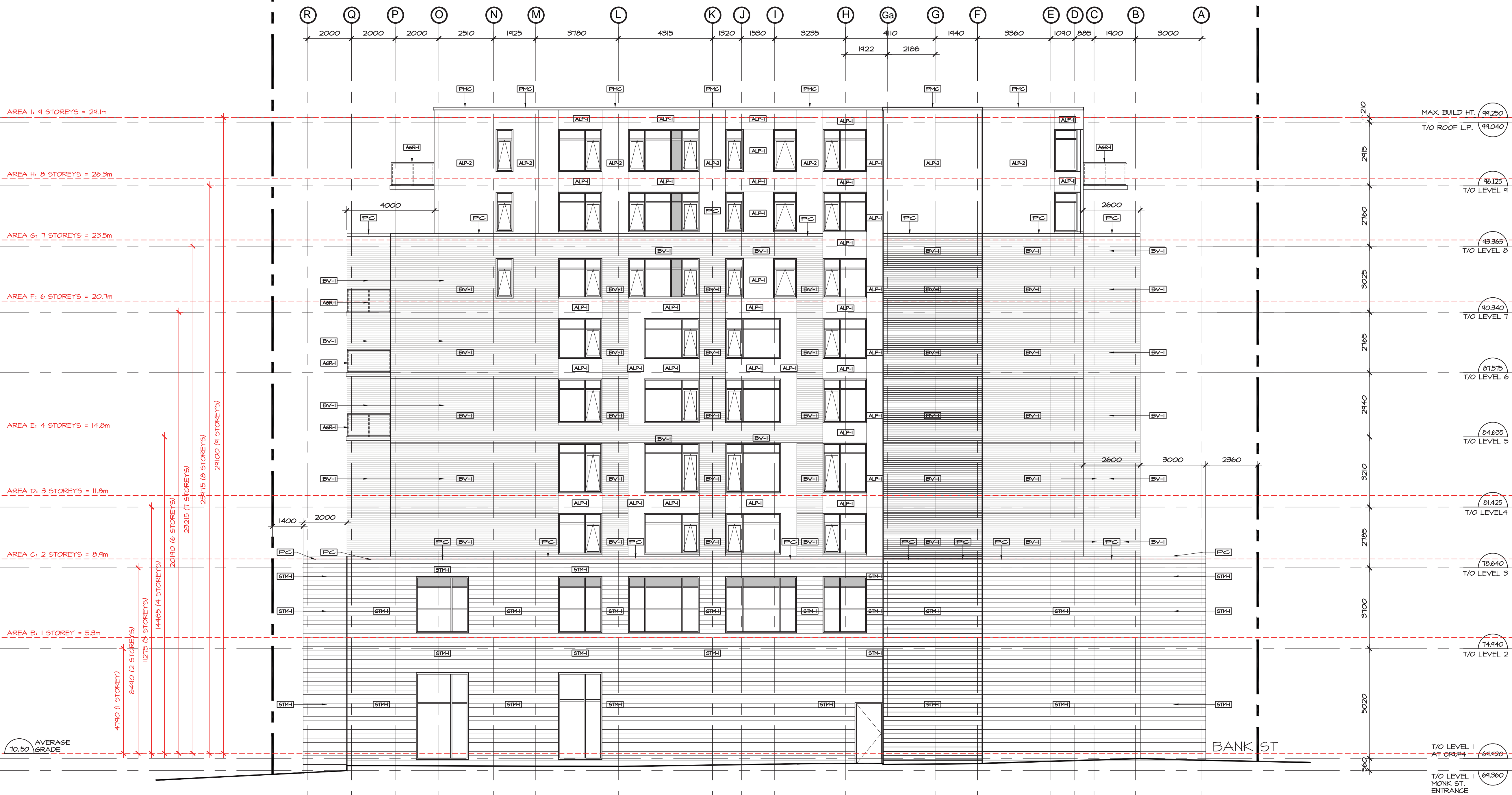
APPROVED
By Douglas James at 4:12 pm, Nov 23, 2018

Douglas James

DOUGLAS JAMES, MCIP, RPP
MANAGER, DEVELOPMENT REVIEW - CENTRAL
PLANNING, INFRASTRUCTURE & ECONOMIC
DEVELOPMENT DEPARTMENT, CITY OF OTTAWA

PROPERTY LINE
SOUTH WEST CORNER

PROPERTY LINE
SOUTH EAST CORNER



FINISH MATERIAL LEGEND:

SC STEEL CANOPY
SGC STEEL & GLASS CANOPY
ACG ALUMINUM CANOPY
FC FABRIC CANOPY
ALC ALUMINUM CURTAIN WALL FRAMING (PRE FINISHED)
ALF ALUMINUM CAP FLASHING (PRE FINISHED)
AGP ALUMINUM & GLASS PRIVACY SCREEN
AGR ALUMINUM & GLASS GUARD RAIL ALUMINUM RAILING
AL ALUMINUM LAUNDER (PREFINISHED)
ALD ALUMINUM DOOR
ALP ALUMINUM SIDING (PRE FINISHED) (COLOUR 1)

ALB ALUMINUM SOFFIT (PRE FINISHED)
ALF ALUMINUM WINDOW FRAMING (PRE FINISHED)
BV-1 BRICK MASONRY - TYPE 1
BV-2 BRICK MASONRY - TYPE 2
STM-1 STONE MASONRY (LARGE FORMAT)
MS-1 METAL SIDING (PRE FINISHED) - TYPE 1
MS-2 METAL SIDING (PRE FINISHED) - TYPE 2
LAS LANDSCAPE STEPS (SEE LANDSCAPE PLAN)
CC CONCRETE CURB (SEE LANDSCAPING)
RTM RETAINING WALL (SEE LANDSCAPING)

PC PRECAST CONCRETE
PFM PRE-FINISH METAL CAP FLASHING
PFM PRE-FINISH METAL FLASHING

SFB SIGN - FIN BANNERS
HRE HOLLOW METAL DOOR (INSULATED)

W12 WINDOW TYPE REFER TO WINDOW SCHEDULE
C12 CURTAIN WALL TYPE REFER TO WINDOW SCHEDULE
000.0 DOOR NUMBER, REFER TO DOOR SCHEDULE
LF EXTERIOR LIGHT FIXTURE, REFER TO ELECTRICAL DRAWINGS

SA MASONRY SHELF ANGLE
SSA SUSPENDED MASONRY SHELF ANGLE BELOW SLAB
RSA RAISED MASONRY SHELF ANGLE ABOVE SLAB
CJ MASONRY CONTROL JOINT

SPANDREL GLASS PANEL
ALUMINUM LOUVER
ALUMINUM SPANDREL PANEL
DENOTES OPERABLE WINDOW SASH - OUT SWINGING WINNING

no.	date	revision
4	AUG. 8/18	ISSUED IN RESPONSE TO SECOND ROUND OF SITE PLAN COMMENTS
3	JUN. 20/18	ISSUED IN RESPONSE TO SITE PLAN COMMENTS
2	JUN. 7/18	ISSUED FOR CLIENT REVIEW
1	APR. 6/18	ISSUED FOR CLIENT REVIEW

It is the responsibility of the appropriate contractor to check and verify all dimensions on site and report all errors and/or omissions to the architect.

All contractors must comply with all pertinent codes and by-laws.

Do not scale drawings.

This drawing may not be used for construction until signed.

Copyright reserved.



Hobin Architecture
Incorporated
63 Parnilla Street
Ottawa, Ontario
Canada K1S 3K7
T: 613-238-7200
F: 613-235-2005
E: mail@hobinarc.com
hobinarc.com



PROJECT/LOCATION:
890-900 BANK STREET
REDEVELOPMENT
890/900 Bank St., Ottawa ON

DRAWING TITLE:
SOUTH EXTERIOR
ELEVATION

DRAWN BY: DATE: SCALE:
SDML FEBRUARY 2018 1:100

PROJECT:
1801

DRAWING NO.:
A3.02

REVISION NO.:

#17784

D07-12-17-0117

APPROVED
By Douglas James at 4:13 pm, Nov 23, 2018

[Signature]

DOUGLAS JAMES, MCIP, RPP
MANAGER, DEVELOPMENT REVIEW - CENTRAL
PLANNING, INFRASTRUCTURE & ECONOMIC
DEVELOPMENT DEPARTMENT, CITY OF OTTAWA

PROPERTY LINE
SOUTH WEST CORNER

SOUTH PROPERTY LINE
AT STAIR LOCATION



FINISH MATERIAL LEGEND:

SC STEEL CANOPY
SGC STEEL & GLASS CANOPY
AC ALUMINUM CANOPY
FC FABRIC CANOPY

ACF ALUMINUM CURTAIN WALL FRAMING (PRE FINISHED)
AFI ALUMINUM CAP FLASHING (PRE FINISHED)
ASR ALUMINUM & GLASS PRIVACY SCREEN
ASR ALUMINUM & GLASS GUARD C/W ALUMINUM RAILING
AL ALUMINUM LOUVER (PREFINISHED)
ALD ALUMINUM DOOR
ALP ALUMINUM SIDING (PRE FINISHED) (COLOUR 1)

ALP ALUMINUM SOFFIT (PRE FINISHED)
ALP ALUMINUM WINDOW FRAMING (PRE FINISHED)
BY-1 BRICK MASONRY - TYPE 1
BY-2 BRICK MASONRY - TYPE 2
STM-1 STONE MASONRY (LARGE FORMAT)
MS-1 METAL SIDING (PRE FINISHED) - TYPE 1
MS-2 METAL SIDING (PRE FINISHED) - TYPE 2

LAS LANDSCAPE STEPS (SEE LANDSCAPE PLAN)
CC CONCRETE CURB (SEE LANDSCAPING)
RTK RETAINING WALL (SEE LANDSCAPING)

PC PRECAST CONCRETE
PMF PRE-FINISH METAL CAP FLASHING
PMF PRE-FINISH METAL FLASHING

SFB SIGN - FIN BANNERS
HMD HOLLOW METAL DOOR (INSULATED)

W12 WINDOW TYPE REFER TO WINDOW SCHEDULE
C12 CURTAIN WALL TYPE REFER TO WINDOW SCHEDULE
000.0 DOOR NUMBER REFER TO DOOR SCHEDULE
LF EXTERIOR LIGHT FIXTURE REFER TO ELECTRICAL DRAWINGS

SA MASONRY SHELF ANGLE
SSA SUSPENDED MASONRY SHELF ANGLE BELOW SLAB
RSA RAISED MASONRY SHELF ANGLE ABOVE SLAB
CJ MASONRY CONTROL JOINT

SPANDREL GLASS PANEL
ALUMINUM LOUVER
ALUMINUM SPANDREL PANEL
DENOTES OPERABLE WINDOW SASH - OUT SWINGING ANNING

no.	date	revision
4	AUG. 8/18	ISSUED IN RESPONSE TO SECOND ROUND OF SITE PLAN COMMENTS
3	JUN. 20/18	ISSUED IN RESPONSE TO SITE PLAN COMMENTS
2	JUN. 7/18	ISSUED FOR CLIENT REVIEW
1	APR. 6/18	ISSUED FOR CLIENT REVIEW

It is the responsibility of the appropriate contractor to check and verify all dimensions on site and report all errors and/or omissions to the architect.

All contractors must comply with all pertinent codes and by-laws.

Do not scale drawings.

This drawing may not be used for construction until signed.

Copyright reserved.



Hobin Architecture Incorporated
63 Parnilla Street
Ottawa, Ontario
Canada K1S 3K7
T: 613-238-7200
F: 613-235-2005
E: mail@hobinarc.com
hobinarc.com

PROJECT/LOCATION:
890-900 BANK STREET
REDEVELOPMENT
890/900 Bank St., Ottawa ON

DRAWING TITLE:
EAST EXTERIOR
ELEVATION

DRAWN BY: DATE: SDML FEBRUARY 2018

SCALE: 1:100

PROJECT: 1801

DRAWING NO.: A3.03

REVISION NO.:



AMICA™
Mature Lifestyles



CANDEREL

It is the responsibility of the appropriate contractor to check and verify all dimensions on site and report all errors and/or omissions to the architect.

All contractors must comply with all pertinent codes and by-laws.

Do not scale drawings.

This drawing may not be used for construction until signed.

Copyright reserved.



HOBIN
ARCHITECTURE

REVISION NO.

#17784

None

APPROVED
By Douglas James at 4:13 pm, Nov 23, 2018

[Signature]

DOUGLAS JAMES, MCIP, RPP
MANAGER, DEVELOPMENT REVIEW - CENTRAL
PLANNING, INFRASTRUCTURE & ECONOMIC
DEVELOPMENT DEPARTMENT, CITY OF OTTAWA



FINISH MATERIAL LEGEND:

SC STEEL CANOPY
SGC STEEL & GLASS CANOPY
ALC ALUMINUM CANOPY
FC FABRIC CANOPY

ACP ALUMINUM CURTAIN WALL FRAMING (PRE FINISHED)
APF ALUMINUM CAP FLASHING (PRE FINISHED)
AGP ALUMINUM & GLASS PRIVACY SCREEN
AGL ALUMINUM & GLASS GUARD RAIL ALUMINUM RAILING
AL ALUMINUM LOUVER (PREFINISHED)
ALD ALUMINUM DOOR
ALP ALUMINUM SIDING (PRE FINISHED) (COLOUR 1)

ALP ALUMINUM SOFFIT (PRE FINISHED)
APF ALUMINUM WINDOW FRAMING (PRE FINISHED)
BV-1 BRICK MASONRY - TYPE 1
BV-2 BRICK MASONRY - TYPE 2
STM-1 STONE MASONRY (LARGE FORMAT)
MS-1 METAL SIDING (PRE FINISHED) - TYPE 1
MS-2 METAL SIDING (PRE FINISHED) - TYPE 2

LAS LANDSCAPE STEPS (SEE LANDSCAPE PLAN)
CC CONCRETE CURB (SEE LANDSCAPING)
RTK RETAINING WALL (SEE LANDSCAPING)

PC PRECAST CONCRETE
PMF PRE-FINISH METAL CAP FLASHING
PMF PRE-FINISH METAL FLASHING

W12 WINDOW TYPE, REFER TO WINDOW SCHEDULE
W12 WINDOW TYPE, REFER TO WINDOW SCHEDULE
DOOR NUMBER, REFER TO DOOR SCHEDULE
LF EXTERIOR LIGHT FIXTURE, REFER TO ELECTRICAL DRAWINGS

SFB SIGN - FIN BANNERS
HRE HOLLOW METAL DOOR (INSULATED)

SPANDREL GLASS PANEL
ALUMINUM LOUVER
ALUMINUM SPANDREL PANEL
DENOTES OPERABLE WINDOW SASH - OUT SWINGING ANNING

no.	date	revision
4	AUG. 8/18	ISSUED IN RESPONSE TO SECOND ROUND OF SITE PLAN COMMENTS
3	JUN. 20/18	ISSUED IN RESPONSE TO SITE PLAN COMMENTS
2	JUN. 7/18	ISSUED FOR CLIENT REVIEW
1	APR. 6/18	ISSUED FOR CLIENT REVIEW

It is the responsibility of the appropriate contractor to check and verify all dimensions on site and report all errors and/or omissions to the architect.

All contractors must comply with all pertinent codes and by-laws.

Do not scale drawings.

This drawing may not be used for construction until signed.

Copyright reserved.



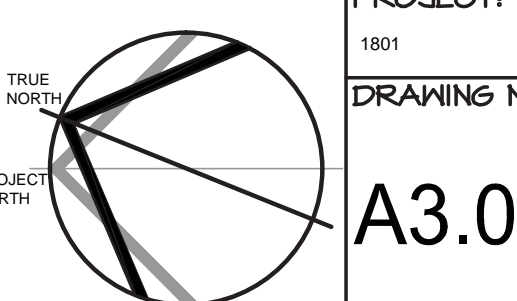
Hobin Architecture Incorporated
63 Parnilla Street
Ottawa, Ontario
Canada K1S 3K7
T: 613-238-7200
F: 613-235-2005
E: mail@hobinarc.com
hobinarc.com



PROJECT/LOCATION:
890-900 BANK STREET
REDEVELOPMENT
890/900 Bank St., Ottawa ON

DRAWING TITLE:
WEST EXTERIOR
ELEVATION

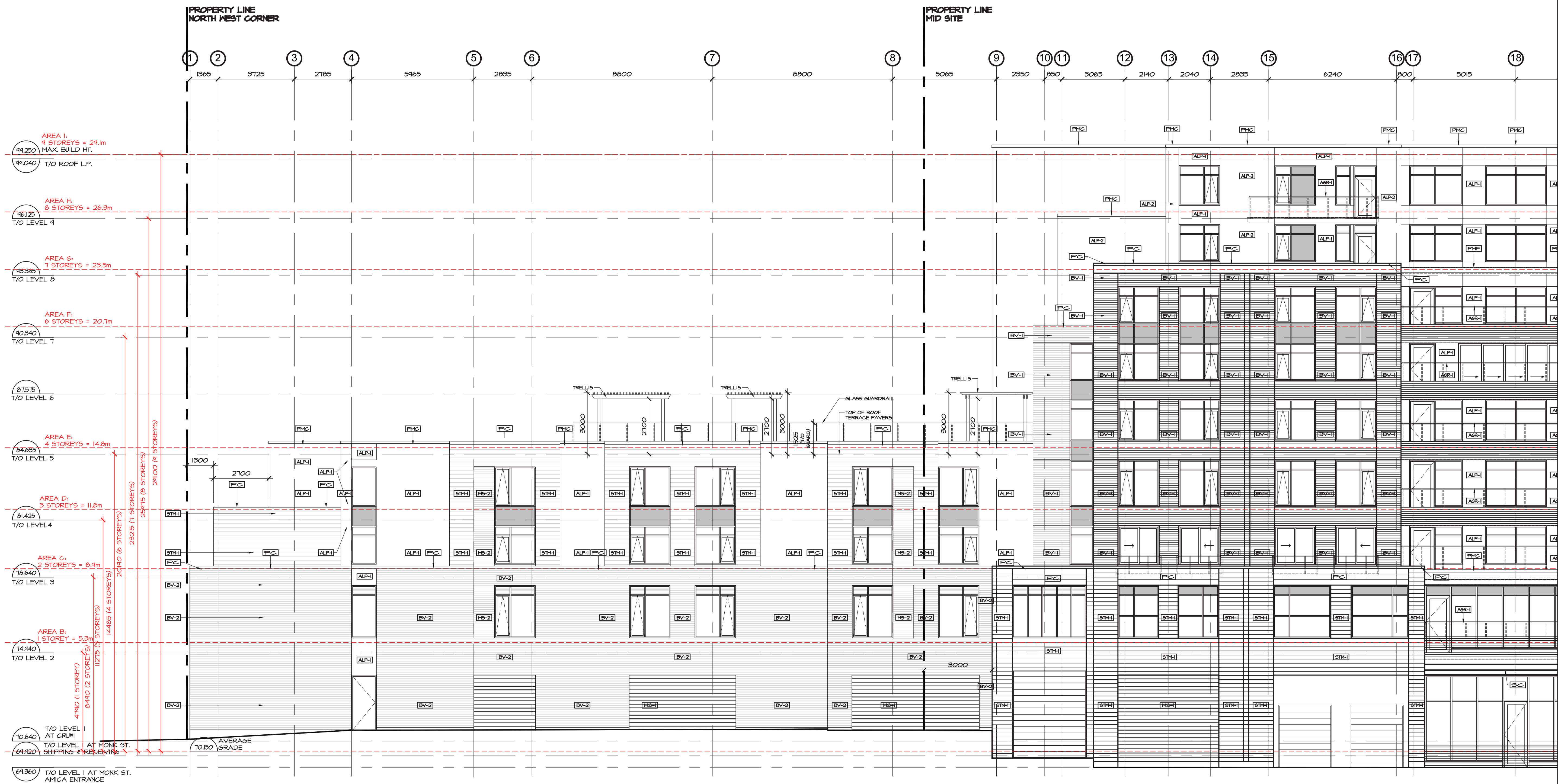
DRAWN BY: SDML	DATE: FEBRUARY 2018	SCALE: 1:100	PROJECT: 1801
DRAWING NO.: A3.05			REVISION NO.:



APPROVED
By Douglas James at 4:13 pm, Nov 23, 2018

[Signature]

DOUGLAS JAMES, MCIP, RPP
MANAGER, DEVELOPMENT REVIEW - CENTRAL
PLANNING, INFRASTRUCTURE & ECONOMIC
DEVELOPMENT DEPARTMENT, CITY OF OTTAWA



FINISH MATERIAL LEGEND:

- SC STEEL CANOPY
- SG STEEL & GLASS CANOPY
- AL ALUMINUM CANOPY
- FC FABRIC CANOPY

- ALP ALUMINUM CURTAIN WALL FRAMING (PRE FINISHED)
- ALF ALUMINUM CAP FLASHING (PRE FINISHED)
- ASR ALUMINUM & GLASS PRIVACY SCREEN
- AGR ALUMINUM & GLASS GUARD GYM ALUMINUM RAILING
- ALD ALUMINUM DOOR
- ALP ALUMINUM SIDING (PRE FINISHED) (COLOUR 1)
- MS-1 METAL SIDING (PRE FINISHED) - TYPE 1
- MS-2 METAL SIDING (PRE FINISHED) - TYPE 2
- STH-1 STONE MASONRY (LARGE FORMAT)
- STH-2 STONE MASONRY (PRE FINISHED) - TYPE 1
- STH-3 STONE MASONRY (PRE FINISHED) - TYPE 2
- LA LANDSCAPE STEPS (SEE LANDSCAPE PLAN)
- CC CONCRETE CURB (SEE LANDSCAPING)
- RTX RETAINING WALL (SEE LANDSCAPING)

- ALP ALUMINUM SOFFIT (PRE FINISHED)
- ALF ALUMINUM WINDOW FRAMING (PRE FINISHED)
- BV-1 BRICK MASONRY - TYPE 1
- BV-2 BRICK MASONRY - TYPE 2
- STH-1 STONE MASONRY (LARGE FORMAT)
- STH-2 STONE MASONRY (PRE FINISHED) - TYPE 1
- STH-3 STONE MASONRY (PRE FINISHED) - TYPE 2
- LA LANDSCAPE STEPS (SEE LANDSCAPE PLAN)
- CC CONCRETE CURB (SEE LANDSCAPING)
- RTX RETAINING WALL (SEE LANDSCAPING)

- PC PRECAST CONCRETE
- PMF PRE-FINISH METAL CAP FLASHING
- PMF PRE-FINISH METAL FLASHING

- SFB SIGN - FIN BANNERS
- HMD HOLLOW METAL DOOR (INSULATED)

- W1 WINDOW TYPE REFER TO WINDOW SCHEDULE
- W2 WINDOW TYPE REFER TO WINDOW SCHEDULE
- W3 WINDOW TYPE REFER TO WINDOW SCHEDULE
- W4 WINDOW TYPE REFER TO WINDOW SCHEDULE
- W5 WINDOW TYPE REFER TO WINDOW SCHEDULE
- W6 WINDOW TYPE REFER TO WINDOW SCHEDULE
- W7 WINDOW TYPE REFER TO WINDOW SCHEDULE
- W8 WINDOW TYPE REFER TO WINDOW SCHEDULE
- W9 WINDOW TYPE REFER TO WINDOW SCHEDULE
- W10 WINDOW TYPE REFER TO WINDOW SCHEDULE
- W11 WINDOW TYPE REFER TO WINDOW SCHEDULE
- W12 WINDOW TYPE REFER TO WINDOW SCHEDULE
- W13 WINDOW TYPE REFER TO WINDOW SCHEDULE
- W14 WINDOW TYPE REFER TO WINDOW SCHEDULE
- W15 WINDOW TYPE REFER TO WINDOW SCHEDULE
- W16 WINDOW TYPE REFER TO WINDOW SCHEDULE
- W17 WINDOW TYPE REFER TO WINDOW SCHEDULE
- W18 WINDOW TYPE REFER TO WINDOW SCHEDULE
- W19 WINDOW TYPE REFER TO WINDOW SCHEDULE
- W20 WINDOW TYPE REFER TO WINDOW SCHEDULE
- W21 WINDOW TYPE REFER TO WINDOW SCHEDULE
- W22 WINDOW TYPE REFER TO WINDOW SCHEDULE
- W23 WINDOW TYPE REFER TO WINDOW SCHEDULE
- W24 WINDOW TYPE REFER TO WINDOW SCHEDULE
- W25 WINDOW TYPE REFER TO WINDOW SCHEDULE
- W26 WINDOW TYPE REFER TO WINDOW SCHEDULE
- W27 WINDOW TYPE REFER TO WINDOW SCHEDULE
- W28 WINDOW TYPE REFER TO WINDOW SCHEDULE
- W29 WINDOW TYPE REFER TO WINDOW SCHEDULE
- W30 WINDOW TYPE REFER TO WINDOW SCHEDULE
- W31 WINDOW TYPE REFER TO WINDOW SCHEDULE
- W32 WINDOW TYPE REFER TO WINDOW SCHEDULE
- W33 WINDOW TYPE REFER TO WINDOW SCHEDULE
- W34 WINDOW TYPE REFER TO WINDOW SCHEDULE
- W35 WINDOW TYPE REFER TO WINDOW SCHEDULE
- W36 WINDOW TYPE REFER TO WINDOW SCHEDULE
- W37 WINDOW TYPE REFER TO WINDOW SCHEDULE
- W38 WINDOW TYPE REFER TO WINDOW SCHEDULE
- W39 WINDOW TYPE REFER TO WINDOW SCHEDULE
- W40 WINDOW TYPE REFER TO WINDOW SCHEDULE
- W41 WINDOW TYPE REFER TO WINDOW SCHEDULE
- W42 WINDOW TYPE REFER TO WINDOW SCHEDULE
- W43 WINDOW TYPE REFER TO WINDOW SCHEDULE
- W44 WINDOW TYPE REFER TO WINDOW SCHEDULE
- W45 WINDOW TYPE REFER TO WINDOW SCHEDULE
- W46 WINDOW TYPE REFER TO WINDOW SCHEDULE
- W47 WINDOW TYPE REFER TO WINDOW SCHEDULE
- W48 WINDOW TYPE REFER TO WINDOW SCHEDULE
- W49 WINDOW TYPE REFER TO WINDOW SCHEDULE
- W50 WINDOW TYPE REFER TO WINDOW SCHEDULE
- W51 WINDOW TYPE REFER TO WINDOW SCHEDULE
- W52 WINDOW TYPE REFER TO WINDOW SCHEDULE
- W53 WINDOW TYPE REFER TO WINDOW SCHEDULE
- W54 WINDOW TYPE REFER TO WINDOW SCHEDULE
- W55 WINDOW TYPE REFER TO WINDOW SCHEDULE
- W56 WINDOW TYPE REFER TO WINDOW SCHEDULE
- W57 WINDOW TYPE REFER TO WINDOW SCHEDULE
- W58 WINDOW TYPE REFER TO WINDOW SCHEDULE
- W59 WINDOW TYPE REFER TO WINDOW SCHEDULE
- W60 WINDOW TYPE REFER TO WINDOW SCHEDULE
- W61 WINDOW TYPE REFER TO WINDOW SCHEDULE
- W62 WINDOW TYPE REFER TO WINDOW SCHEDULE
- W63 WINDOW TYPE REFER TO WINDOW SCHEDULE
- W64 WINDOW TYPE REFER TO WINDOW SCHEDULE
- W65 WINDOW TYPE REFER TO WINDOW SCHEDULE
- W66 WINDOW TYPE REFER TO WINDOW SCHEDULE
- W67 WINDOW TYPE REFER TO WINDOW SCHEDULE
- W68 WINDOW TYPE REFER TO WINDOW SCHEDULE
- W69 WINDOW TYPE REFER TO WINDOW SCHEDULE
- W70 WINDOW TYPE REFER TO WINDOW SCHEDULE
- W71 WINDOW TYPE REFER TO WINDOW SCHEDULE
- W72 WINDOW TYPE REFER TO WINDOW SCHEDULE
- W73 WINDOW TYPE REFER TO WINDOW SCHEDULE
- W74 WINDOW TYPE REFER TO WINDOW SCHEDULE
- W75 WINDOW TYPE REFER TO WINDOW SCHEDULE
- W76 WINDOW TYPE REFER TO WINDOW SCHEDULE
- W77 WINDOW TYPE REFER TO WINDOW SCHEDULE
- W78 WINDOW TYPE REFER TO WINDOW SCHEDULE
- W79 WINDOW TYPE REFER TO WINDOW SCHEDULE
- W80 WINDOW TYPE REFER TO WINDOW SCHEDULE
- W81 WINDOW TYPE REFER TO WINDOW SCHEDULE
- W82 WINDOW TYPE REFER TO WINDOW SCHEDULE
- W83 WINDOW TYPE REFER TO WINDOW SCHEDULE
- W84 WINDOW TYPE REFER TO WINDOW SCHEDULE
- W85 WINDOW TYPE REFER TO WINDOW SCHEDULE
- W86 WINDOW TYPE REFER TO WINDOW SCHEDULE
- W87 WINDOW TYPE REFER TO WINDOW SCHEDULE
- W88 WINDOW TYPE REFER TO WINDOW SCHEDULE
- W89 WINDOW TYPE REFER TO WINDOW SCHEDULE
- W90 WINDOW TYPE REFER TO WINDOW SCHEDULE
- W91 WINDOW TYPE REFER TO WINDOW SCHEDULE
- W92 WINDOW TYPE REFER TO WINDOW SCHEDULE
- W93 WINDOW TYPE REFER TO WINDOW SCHEDULE
- W94 WINDOW TYPE REFER TO WINDOW SCHEDULE
- W95 WINDOW TYPE REFER TO WINDOW SCHEDULE
- W96 WINDOW TYPE REFER TO WINDOW SCHEDULE
- W97 WINDOW TYPE REFER TO WINDOW SCHEDULE
- W98 WINDOW TYPE REFER TO WINDOW SCHEDULE
- W99 WINDOW TYPE REFER TO WINDOW SCHEDULE
- W100 WINDOW TYPE REFER TO WINDOW SCHEDULE

- SA MASONRY SHELF ANGLE
- SSA SUSPENDED MASONRY SHELF ANGLE BELOW SLAB
- RSA RAISED MASONRY SHELF ANGLE ABOVE SLAB
- CJ MASONRY CONTROL JOINT

- SPANDREL GLASS PANEL
- ALUMINUM LOUVER
- ALUMINUM SPANDREL PANEL
- SPANDREL GLASS PANEL
- ALUMINUM LOUVER
- ALUMINUM SPANDREL PANEL
- SPANDREL GLASS PANEL
- ALUMINUM LOUVER
- ALUMINUM SPANDREL PANEL

- LF EXTERIOR LIGHT FIXTURE REFER TO ELECTRICAL DRAWINGS

- CJ MASONRY CONTROL JOINT

- SPANDREL GLASS PANEL
- ALUMINUM LOUVER
- ALUMINUM SPANDREL PANEL
- SPANDREL GLASS PANEL
- ALUMINUM LOUVER
- ALUMINUM SPANDREL PANEL
- SPANDREL GLASS PANEL
- ALUMINUM LOUVER
- ALUMINUM SPANDREL PANEL

no.	date	revision
4	AUG. 8/18	ISSUED IN RESPONSE TO SECOND ROUND OF SITE PLAN COMMENTS
3	JUN. 20/18	ISSUED IN RESPONSE TO SITE PLAN COMMENTS
2	JUN. 7/18	ISSUED FOR CLIENT REVIEW
1	APR. 6/18	ISSUED FOR CLIENT REVIEW

It is the responsibility of the appropriate contractor to check and verify all dimensions on site and report all errors and/or omissions to the architect.

All contractors must comply with all pertinent codes and by-laws.

Do not scale drawings.

This drawing may not be used for construction until signed.

Copyright reserved.



Hobin Architecture
Incorporated
63 Parnilla Street
Ottawa, Ontario
Canada K1S 3K7
T: 613-238-7200
F: 613-235-2005
E: mail@hobinarc.com
hobinarc.com



PROJECT/LOCATION:
890-900 BANK STREET
REDEVELOPMENT
890/900 Bank St., Ottawa ON

DRAWING TITLE:
WEST EXTERIOR
ELEVATION CONTINUED

DRAWN BY: DATE: SCALE:
SDML FEBRUARY 2018 1:100

PROJECT: 1801

DRAWING NO.: A3.06

REVISION NO.:

#17784

D07-12-17-0117