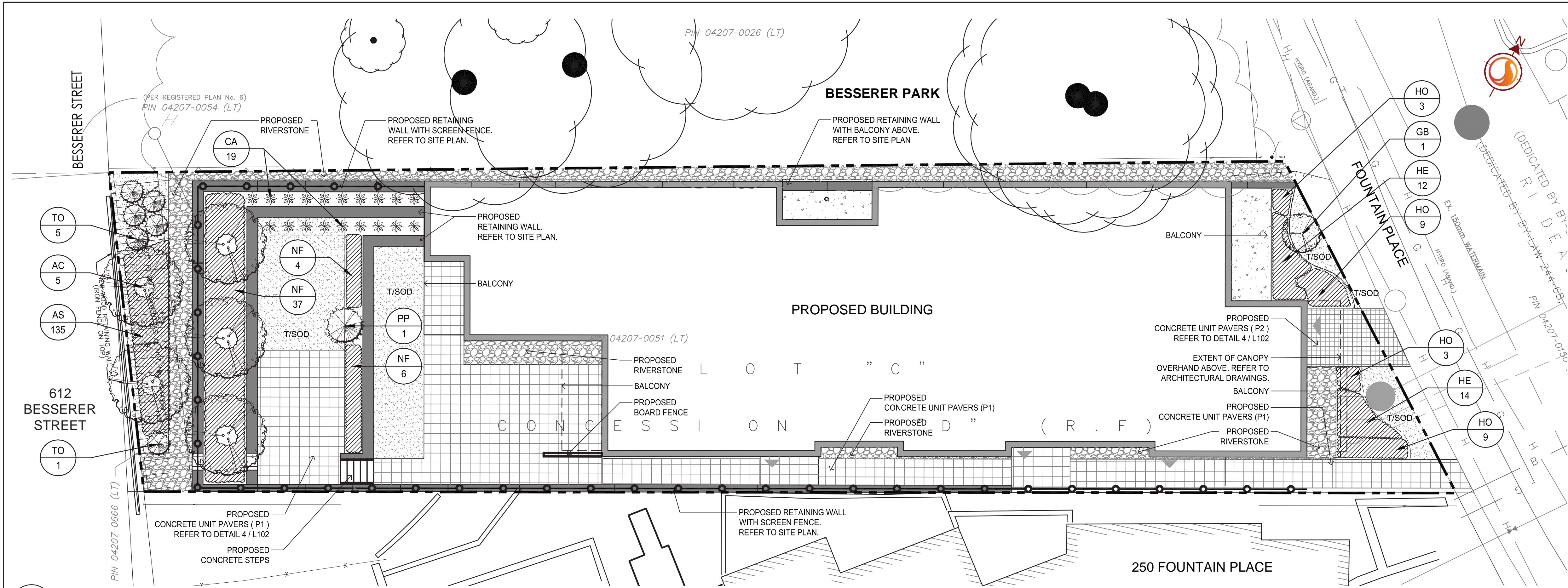
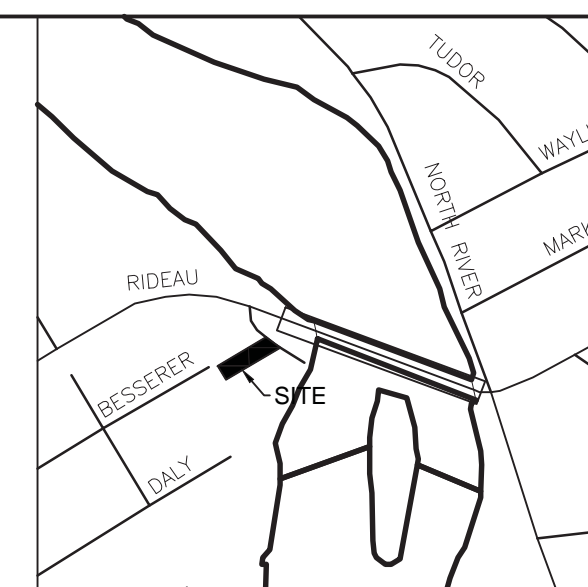


Copyright Reserved

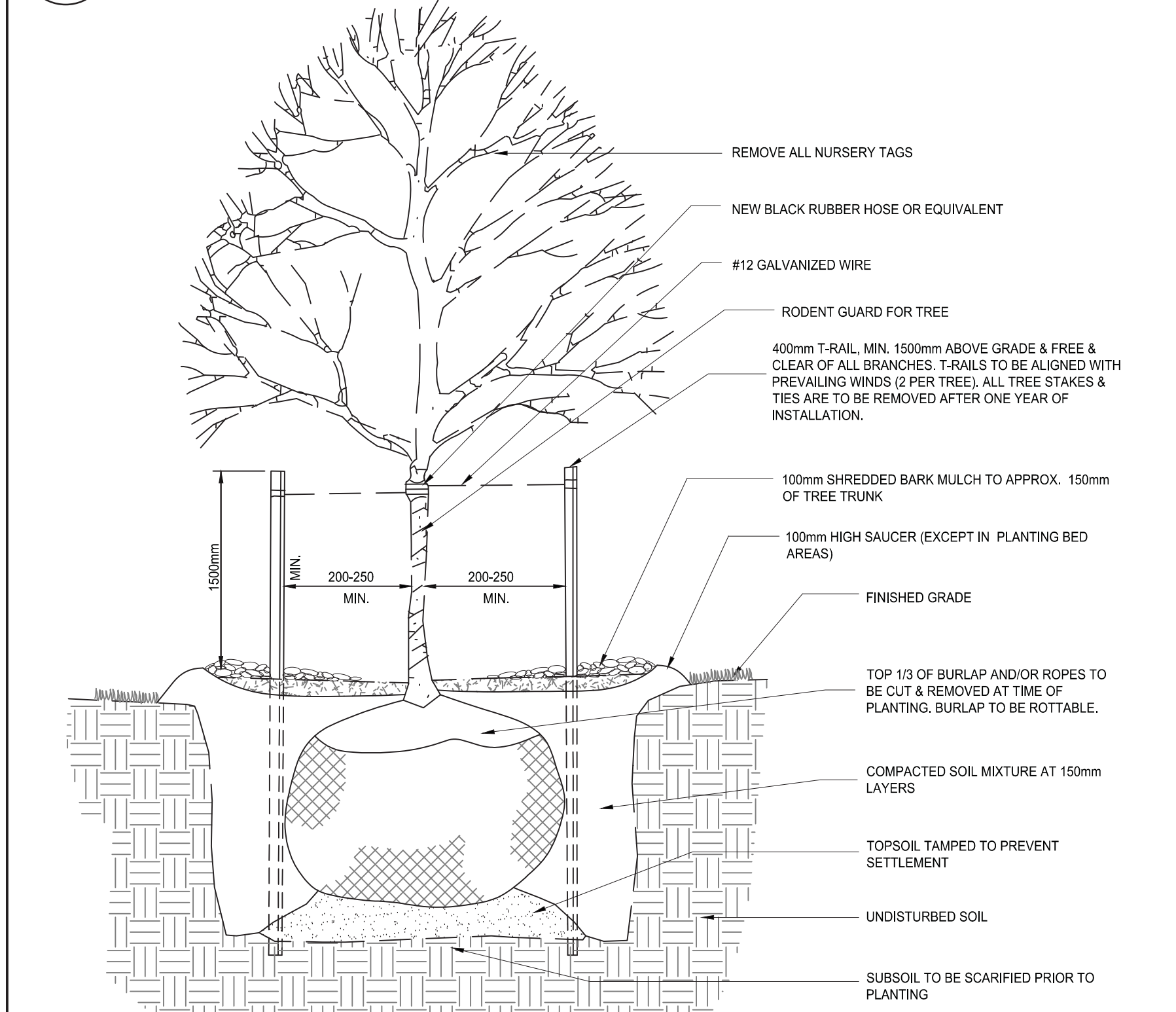
The Contractor shall verify and be responsible for all dimensions. DO NOT scale the drawing - any errors or omissions shall be reported to Stantec without delay. The Copyrights to all designs and drawings are the property of Stantec. Reproduction or use for any purpose other than that authorized by Stantec is forbidden.

Legend

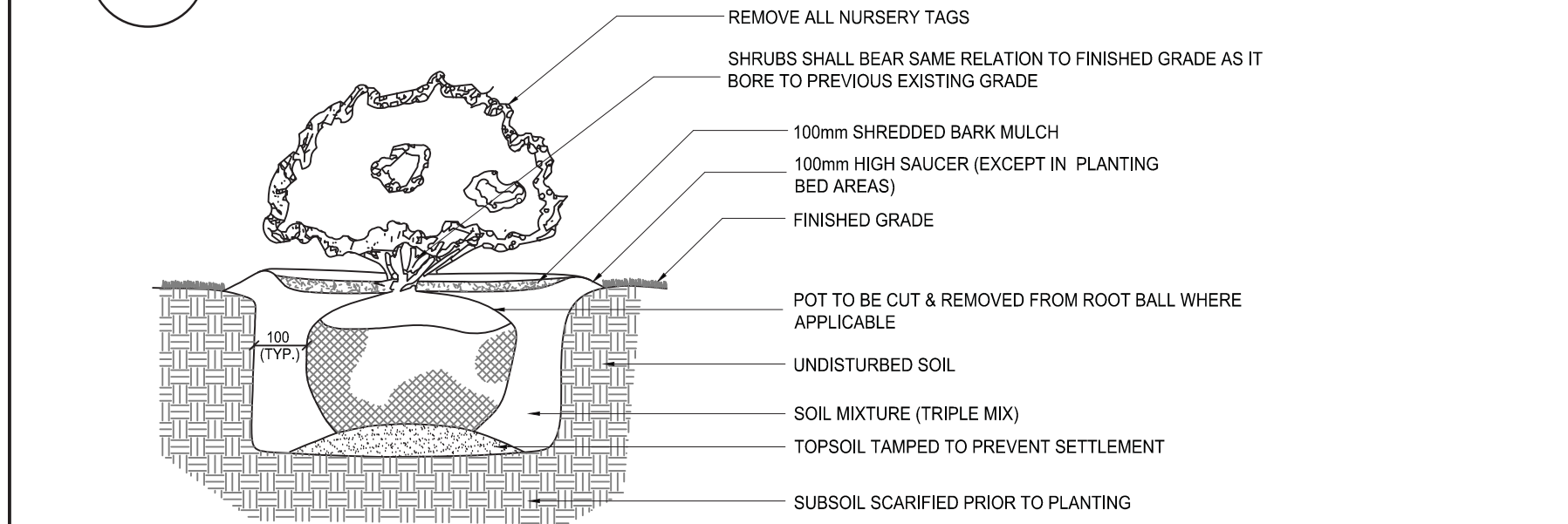
- EXISTING SIGNIFICANT TREE TO REMAIN
- EXISTING WOODED AREA
- PROPOSED DECIDUOUS TREE
- PROPOSED CONIFEROUS TREE
- PROPOSED PERENNIALS AND ORNAMENTAL GRASSES
- PROPOSED PLANTING BED
- PROPOSED CONCRETE UNIT PAVERS REFER TO DETAIL 4/L102
- PROPOSED CONCRETE REFER TO ARCHITECTURAL DRAWINGS
- PROPOSED RIVERSTONE REFER TO DETAIL 5/L102
- T/SOD TOPSOIL AND SOD
- PROPOSED BOARD ON BOARD WOODEN FENCE
- PROPERTY LINE



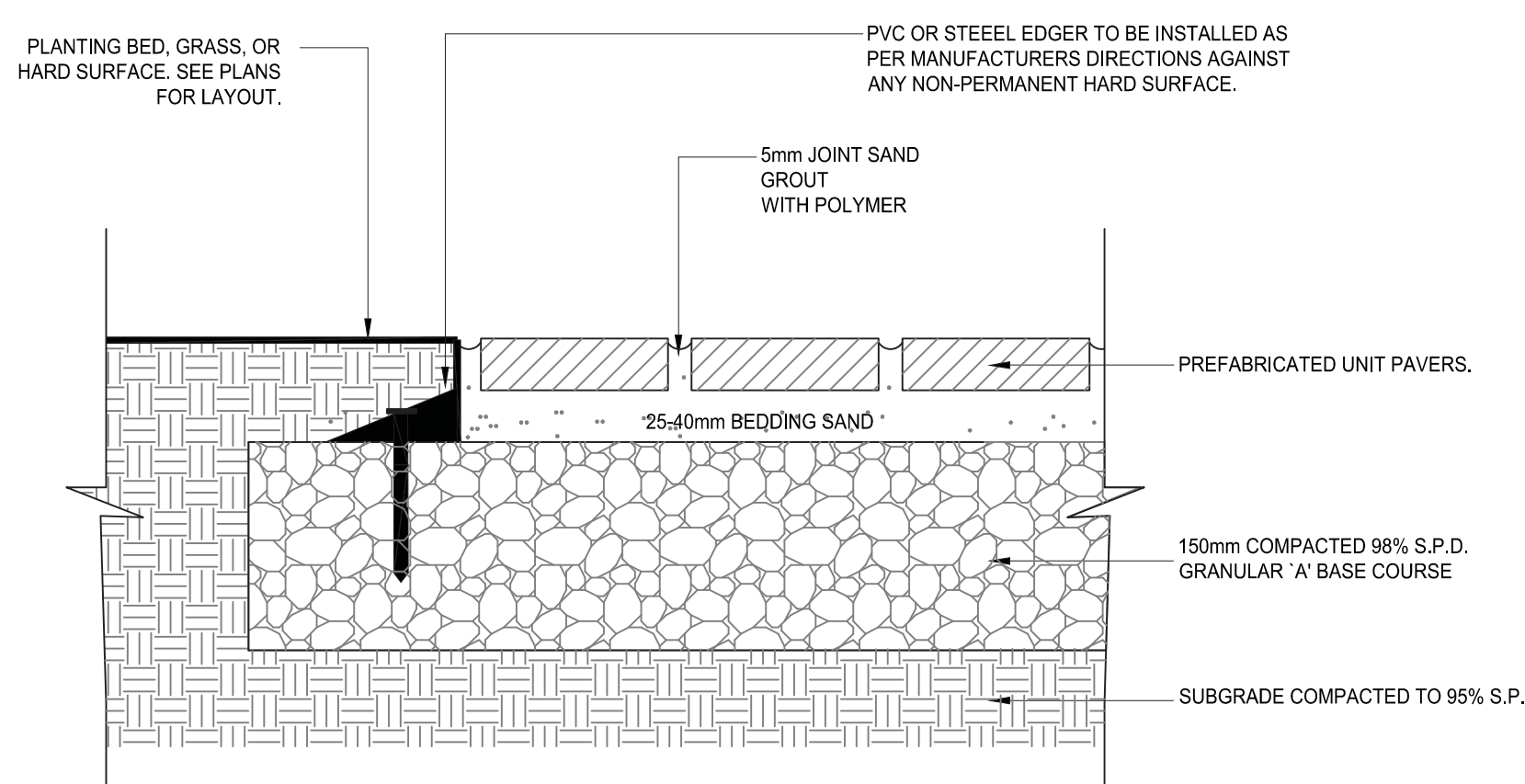
1 LANDSCAPE PLAN
1:100



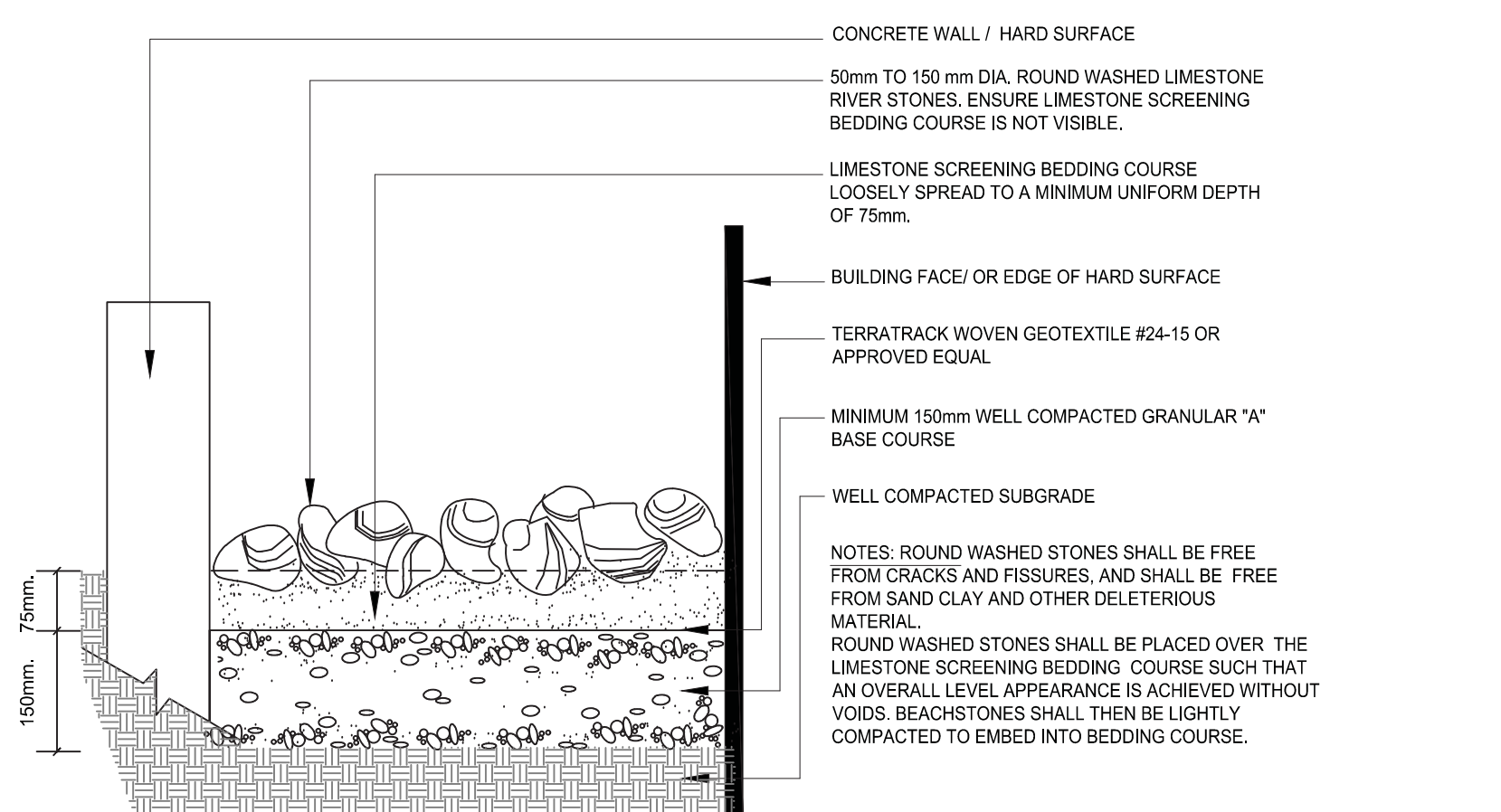
2 DECIDUOUS TREE PLANTING DETAIL
N.T.S.



3 SHRUB AND PERENNIAL PLANTING DETAIL
N.T.S.



4 UNIT PAVER DETAIL
N.T.S.



5 RIVERSTONE DETAIL
N.T.S.

PLANT LIST

QTY.	KEY	BOTANICAL NAME	COMMON NAME	SIZE	REMARKS
DECIDUOUS TREES - REFER TO DETAIL 2/L102					
5	AC	<i>Amelanchier canadensis</i>	Serviceberry	2500mm ht.	W.B.: Clump Form: Plant @ 4000mm o/c
1	GB	<i>Ginkgo biloba 'Princeton Sentry'</i>	Princeton Sentry Maidenhair Tree	60mm cal	W.B.
CONIFEROUS TREES - REFER TO DETAIL 2/L102					
1	PP	<i>Picea pungens 'Sester Dwarf'</i>	Sester Dwarf Blue Spruce	1250mm ht.	B.B.C.
6	TO	<i>Thuja occidentalis 'Degroot's Spire'</i>	Degroot's Spire Cedar	2000mm ht.	W.B.: Plant at 1000mm o/c
PERENNIALS / ORNAMENTAL GRASSES - REFER TO DETAIL 3/L102					
135	AS	<i>Asarum canadense</i>	Canada Wild Ginger	Plugs	Potted: Plant at 300 mm o/c
19	CA	<i>Calamagrostis acutiflora 'Overdam'</i>	Overdam Feather Reed Grass	1 Gal.	Potted: Plant at 750mm o/c
24	HO	<i>Hosta 'Blue Ivory'</i>	Blue Ivory Hosta	1 Gal.	Potted: Plant at 500mm o/c
26	HE	<i>Hemerocallis 'Gentle Shepherd'</i>	Gentle Shepherd Daylily	1 Gal.	Potted: Plant at 500mm o/c
47	NF	<i>Nepeta faassenii 'Walkers Low'</i>	Walker's Low Catmint	1 Gal.	Potted: Plant at 750mm o/c

- P1 INDUSTRIA POLISHED PAVERS BY TECO-BLOC OR APPROVED EQUIVALENT
- SIZE: 98mm X 150mm X 300mm
 - COLOUR: BEIGE CREAM
 - PATTERN: LINEAR GRID
- P2 LINEA SMALL RECTANGLE PAVERS BY TECO-BLOC OR APPROVED EQUIVALENT
- SIZE: 100mm X 100mm X 225mm
 - 100mm X 100mm X 325mm
 - 100mm X 100mm X 425mm
 - COLOUR: CHESTNUT BROWN
 - PATTERN: LINEAR; PARALLEL TO BUILDING

LANDSCAPE NOTES:

1. REFER TO TREE PRESERVATION PLAN, FOR ADDITIONAL INFORMATION REGARDING TREE REMOVAL.
2. REFER TO "GRADING PLAN" FOR PROPOSED GRADING.
3. REFER TO "SITE SERVICING PLAN" FOR LOCATION AND DETAILS OF PROPOSED UNDERGROUND SERVICES.
4. SOD SHALL BE KENTUCKY BLUEGRASS SOD INSTALLED OVER 135mm OF TOPSOIL. SOD SHALL BE INSTALLED THROUGHOUT WITHIN LIMIT OF WORK AND IN ALL DISTURBED AREAS OUTSIDE THE LIMIT OF WORK. SOD SHALL BE INSTALLED AS PER OPS 803.
5. CONTRACTOR TO LOCATE AND STAKE ALL UTILITIES PRIOR TO ANY WORK ON THE SITE. DO NOT PLANT DIRECTLY ABOVE UNDERGROUND UTILITIES. REPORT ANY DISCREPANCIES TO THE LANDSCAPE ARCHITECT FOR DIRECTION.
6. MAINTAIN A MINIMUM CLEARANCE OF 2.0m BETWEEN ALL UNDERGROUND UTILITIES AND PROPOSED TREES.
7. NO TREES SHALL BE PLANTED UNDER OVERHEAD WIRES.
8. THE LANDSCAPE ARCHITECT MAY ADJUST THE LOCATION OF TREES PRIOR TO PLANTING TO MINIMIZE CONFLICTS WITH UTILITIES, DRIVEWAYS AND INTERSECTION VISIBILITY.
9. CONTRACTOR SHALL SUPPLY ALL MATERIALS IN QUANTITIES SUFFICIENT TO COMPLETE WORK SHOWN ON THESE DRAWINGS. ANY DISCREPANCIES SHALL BE REPORTED TO THE LANDSCAPE ARCHITECT FOR DIRECTION.
10. DO NOT MAKE SUBSTITUTIONS OF MATERIALS, PRODUCTS OR QUANTITIES WITHOUT PRIOR WRITTEN PERMISSION OF THE LANDSCAPE ARCHITECT.
11. THE CONTRACTOR TO MAKE GOOD TO THE SATISFACTION OF THE LANDSCAPE ARCHITECT ANY AREAS DAMAGED BY THE WORK.
12. UPON THE COMPLETION OF WORK EACH DAY, REMOVE ALL DEBRIS, GARBAGE AND SURPLUS MATERIALS FROM THE SITE. KEEP THE SITE CLEAN AND USEABLE AT ALL TIMES.
13. ALL WORKMANSHIP AND MATERIALS (INCLUDING PLANTS) TO BE GUARANTEED FOR ONE FULL YEAR FOLLOWING FINAL ACCEPTANCE OF THE PROJECT.
14. THE CONTRACTOR SHALL REMOVE ALL T-BAR AND WOODEN TREE STAKES PRIOR TO ASSUMPTION BY THE OWNER.
15. AT THE TIME OF INSPECTION FOR ACCEPTANCE ALL TREE PITS SHALL BE CULTIVATED, FREE OR WEEDS, LEAVES, BROKEN BRANCHES AND DEBRIS.

Revision	By	Appd.	YY.MM.DD
3	REVISED SITE PLAN	LZ	IL 18.10.26
2	REVISED SITE PLAN	IL	IL 17.01.23
1	ISSUED TO SITE PLAN CONTROL APPROVAL	BD	IL 16.10.19

File Name: 160401234-LB

Permit-Seal



Client/Project
TC UNITED GROUP

244 FOUNTAIN PLACE

OTTAWA, ON

Title
LANDSCAPE PLAN

Project No. 160401234
Drawing No. Sheet
Scale 0 1 3 5m
1:100
Revision

W:\Ottawa\160401234_244 Fountain Place\Design\Drawings\160401234-LA.dwg
2018/10/26 12:29 PM by: Isabelle Lalonde