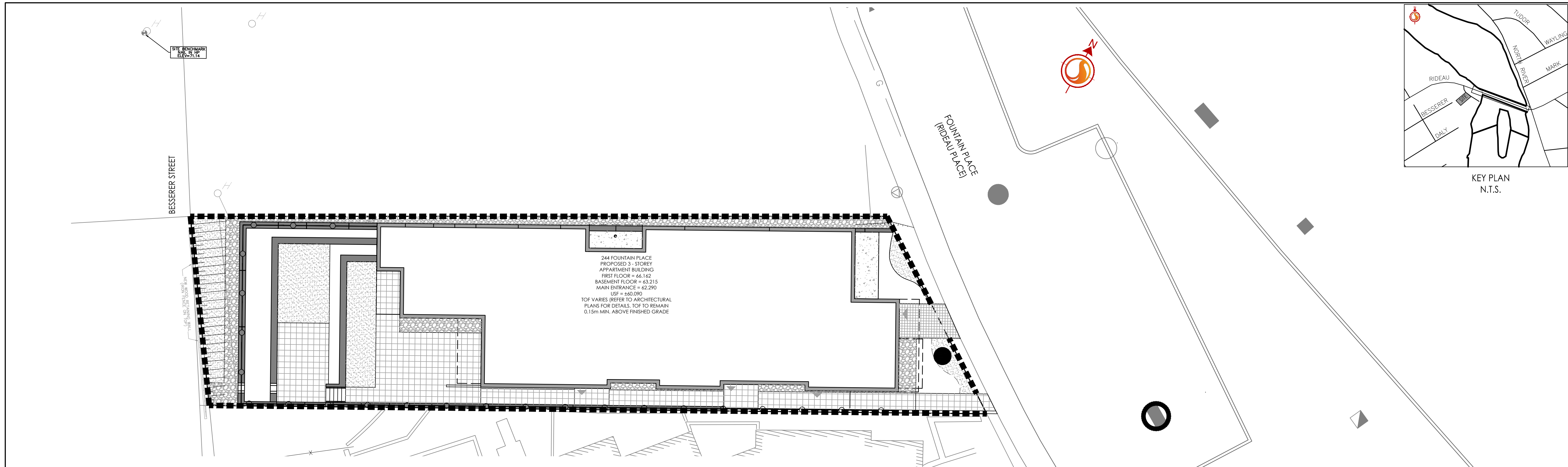
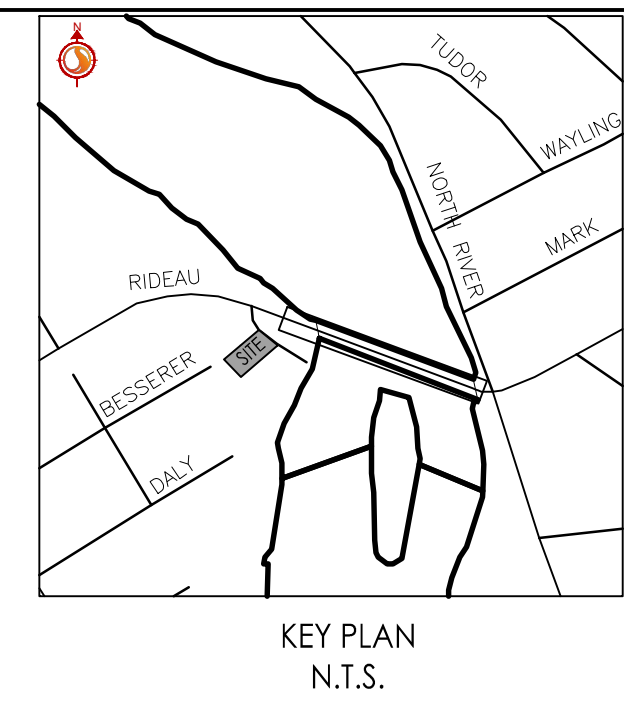
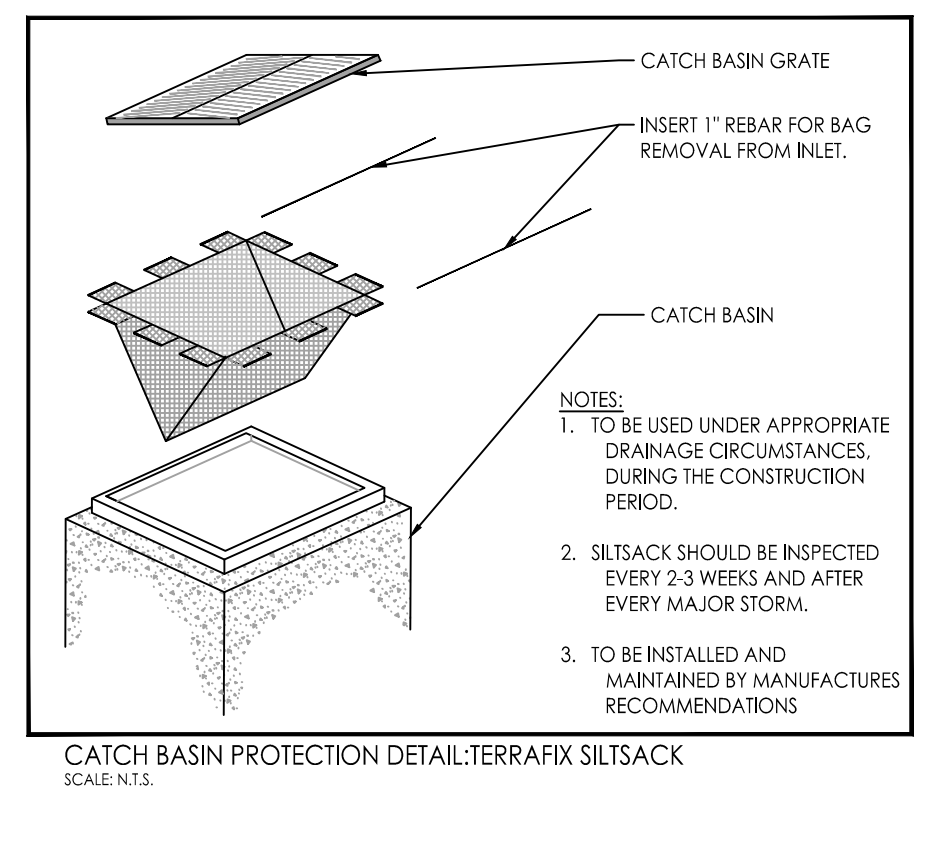
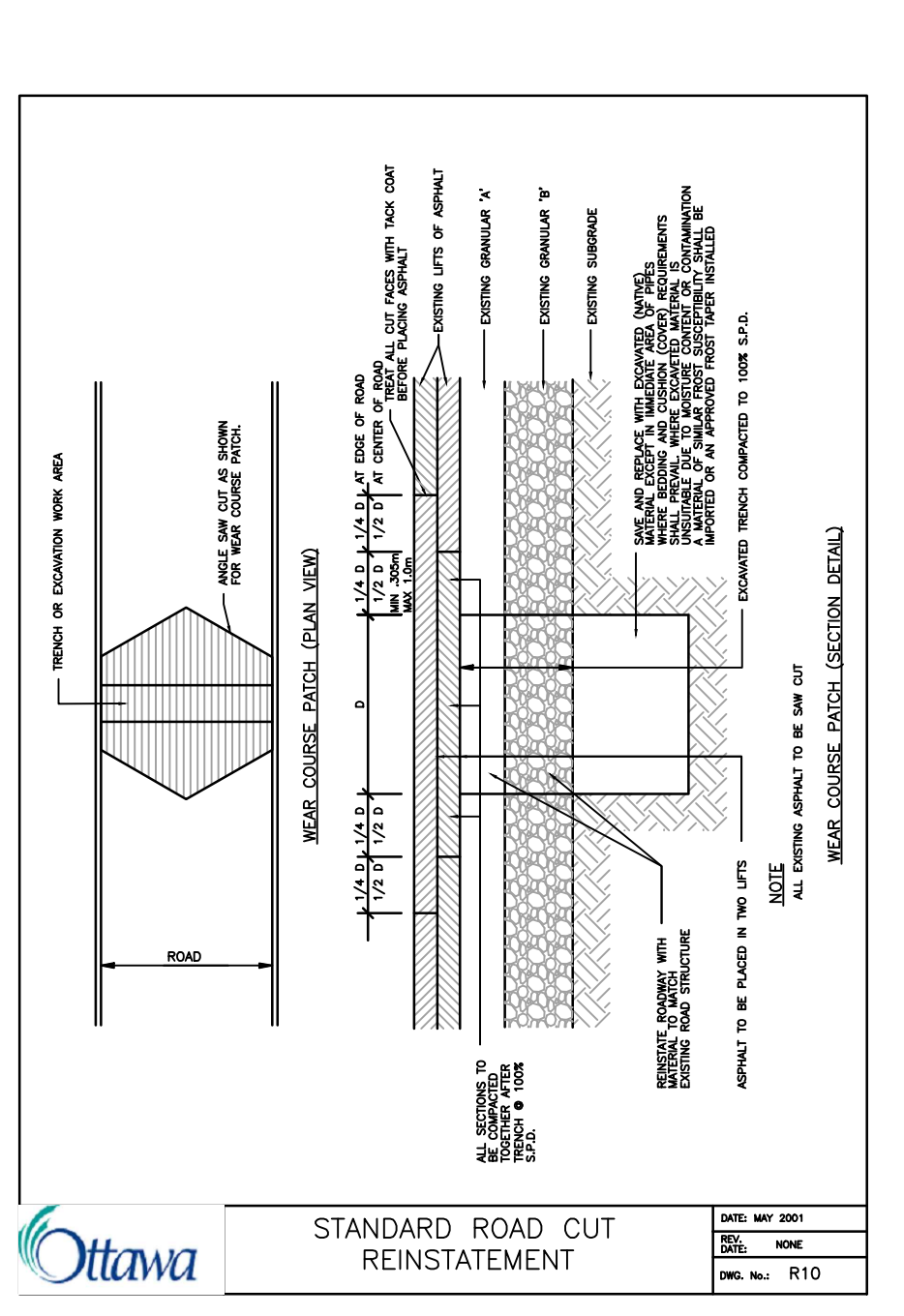
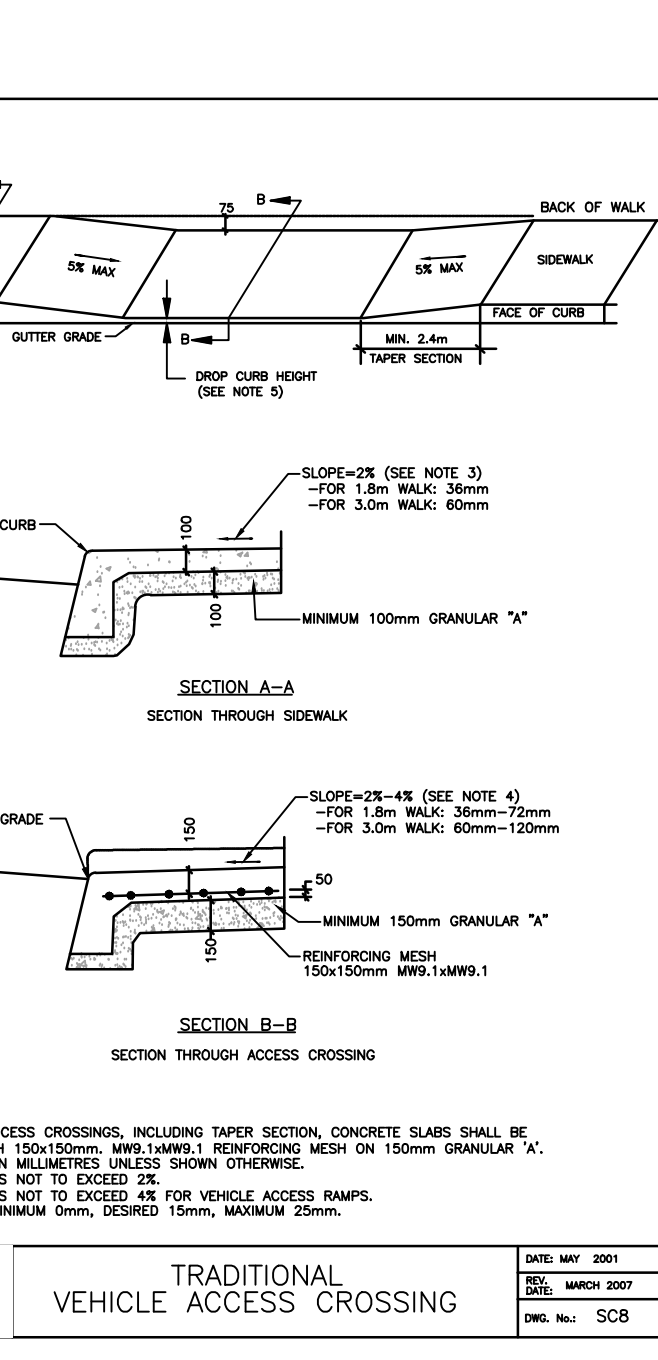
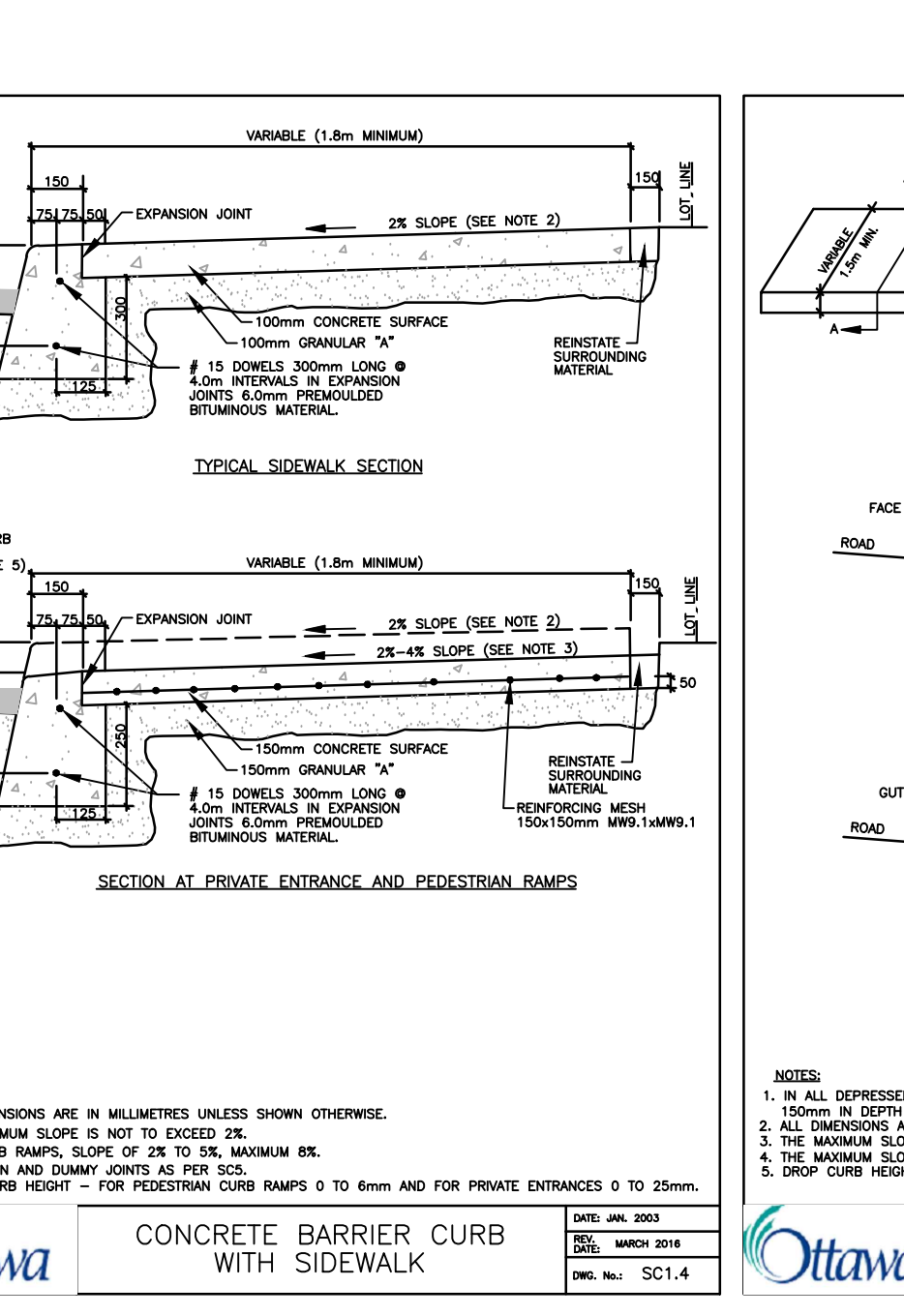
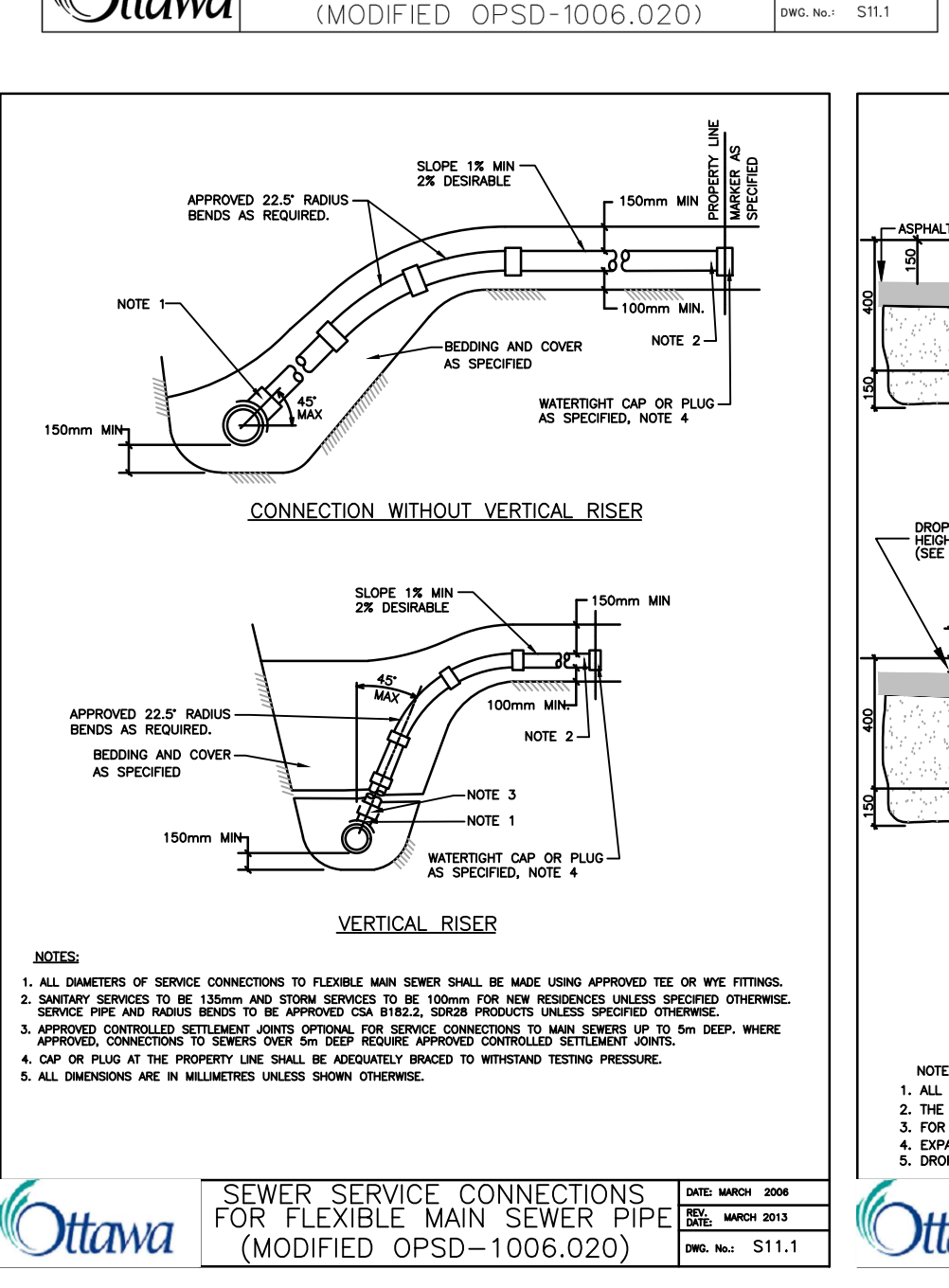
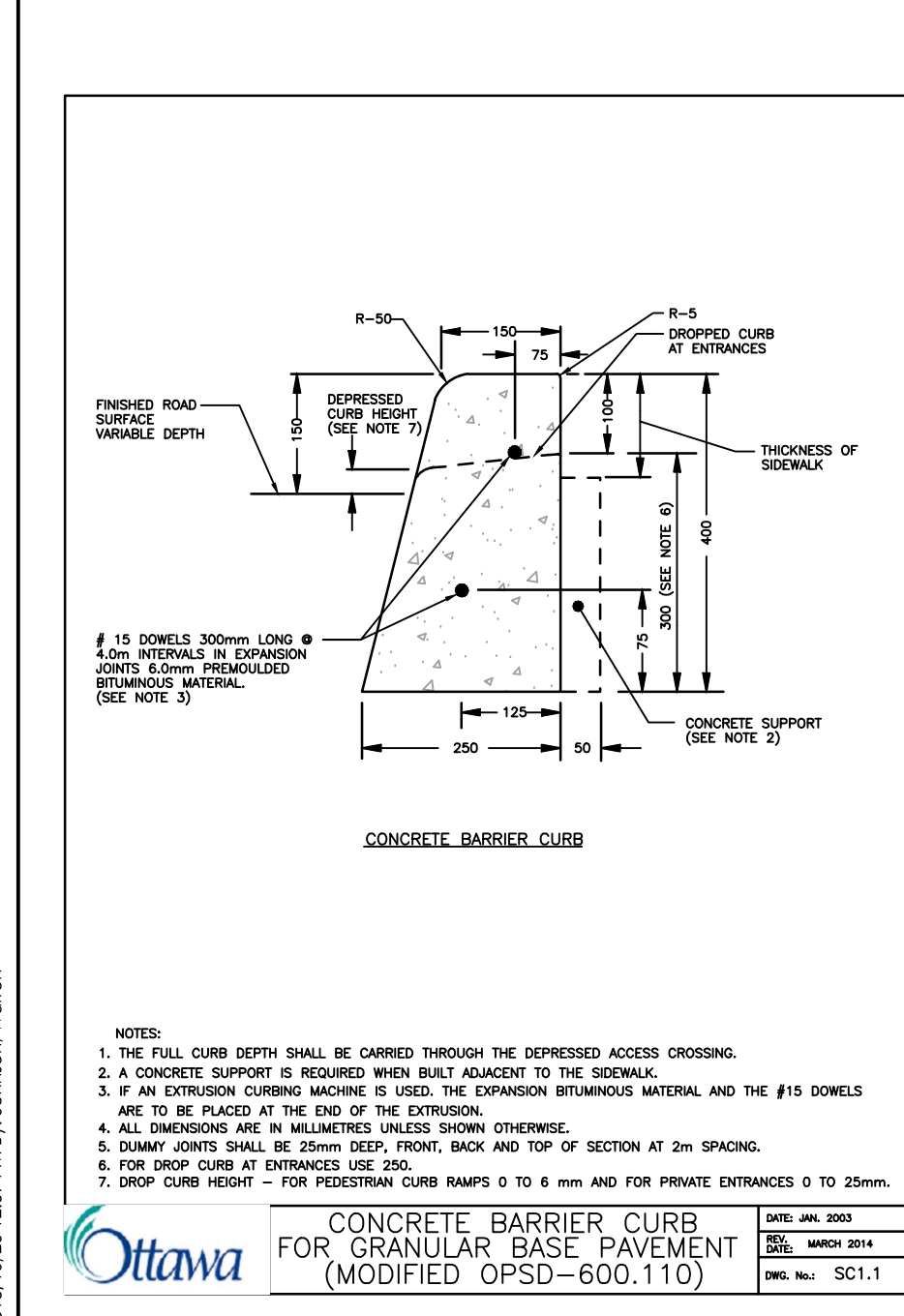
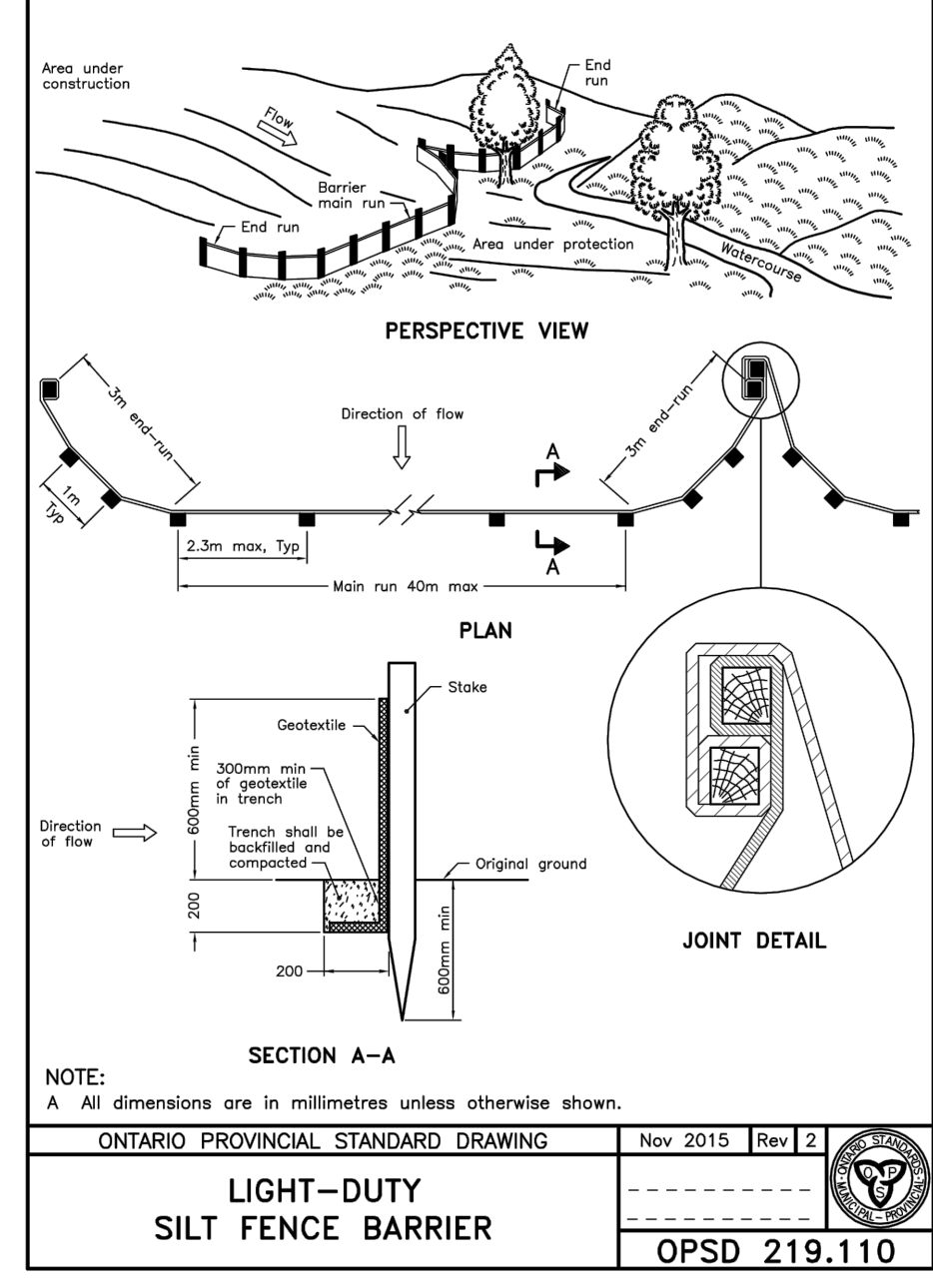
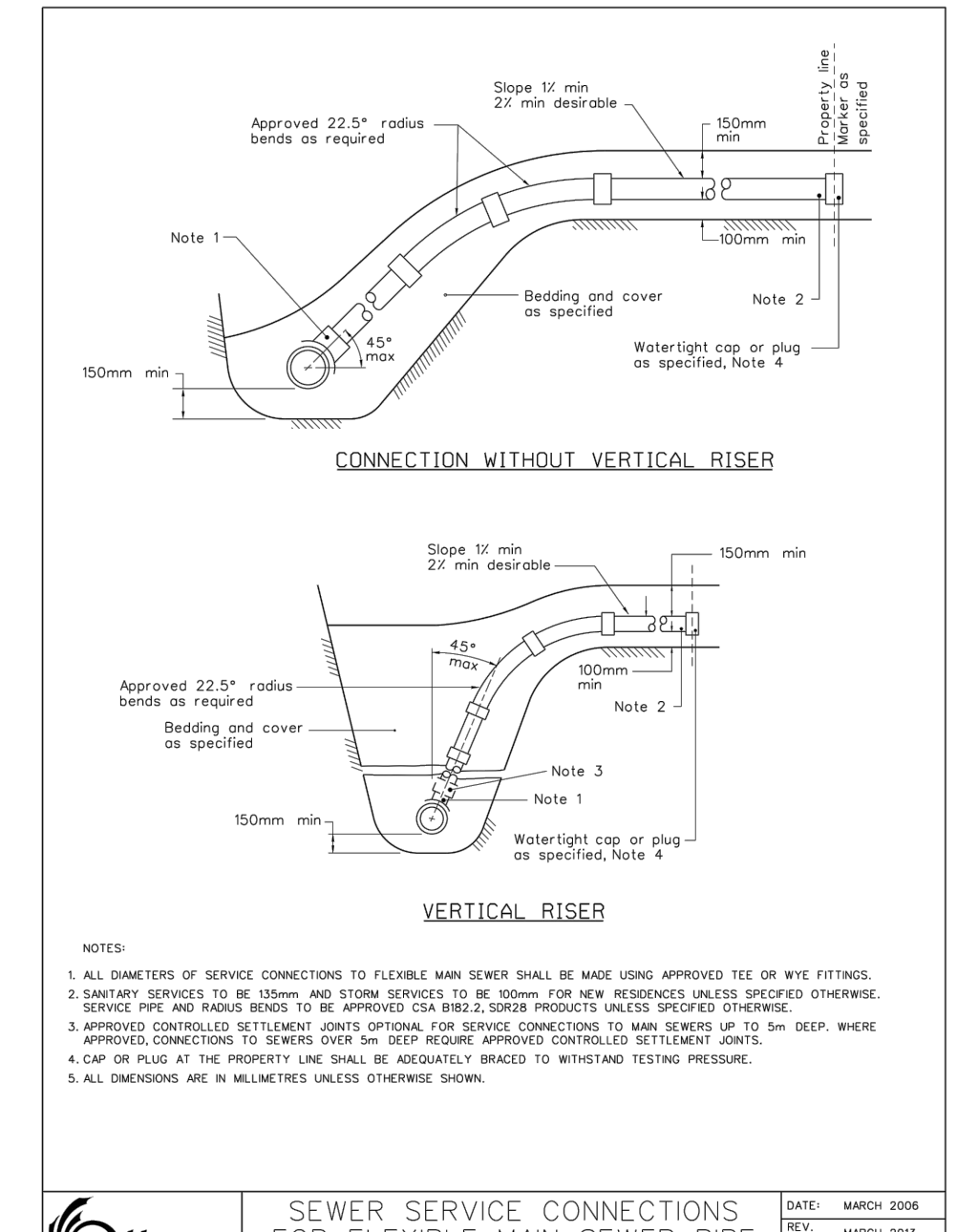
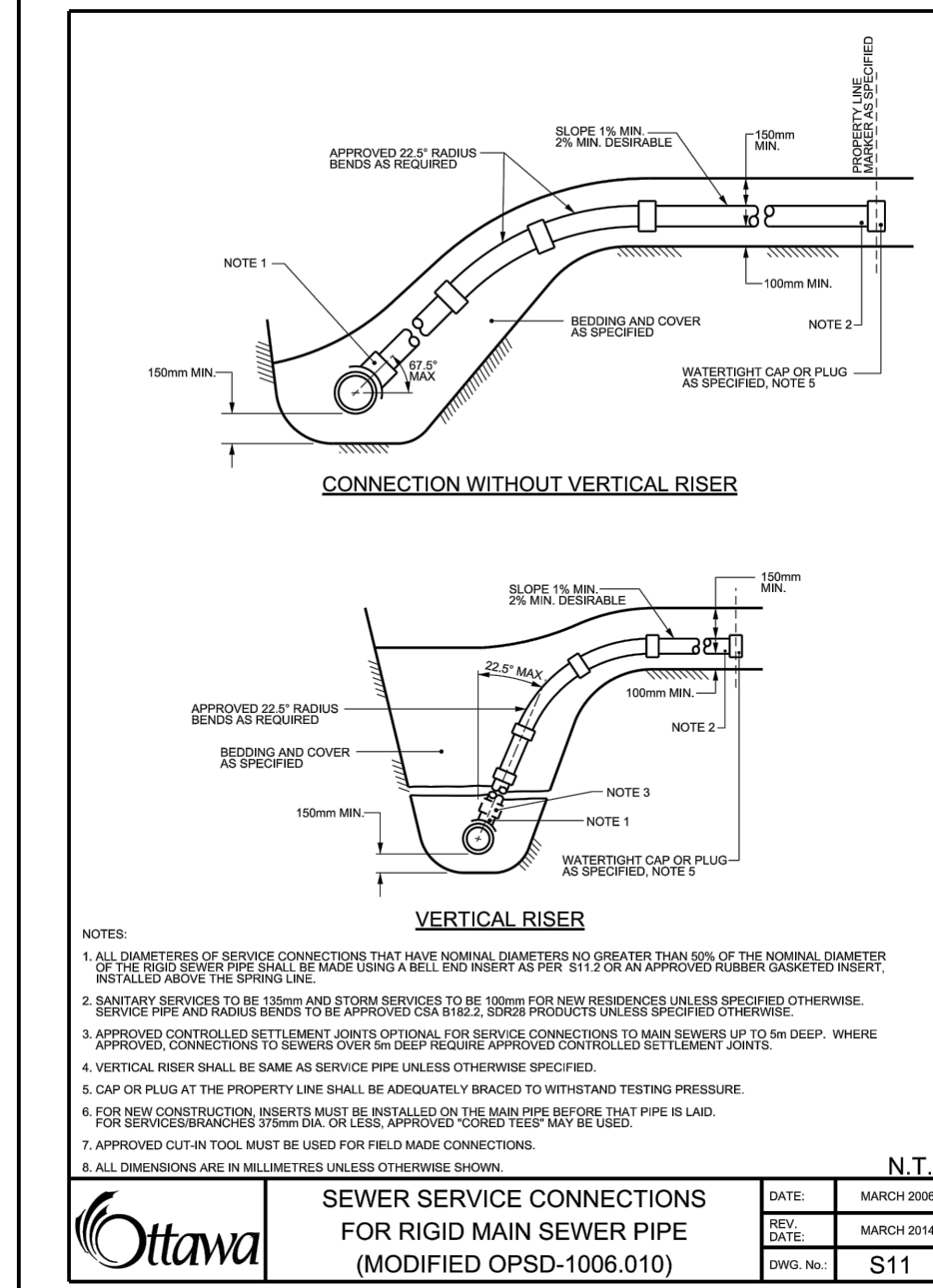


- LIMIT THE EXTENT OF EXPOSED SOILS AT ANY GIVEN TIME.
- REVEGETATE EXPOSED AREAS AND SLOPES AS SOON AS POSSIBLE.
- MINIMIZE AREA TO BE CLEARED AND GRUBBED.
- PROTECT EXPOSED SLOPES WITH PLASTIC OR SYNTHETIC MULCHES.
- INSTALL CATCH BASIN INSERTS OR EQUIVALENT IN ALL PROPOSED CATCH BASINS AND CATCH BASIN MANHOLES AND IN ALL EXISTING CATCH BASINS THAT WILL RECEIVE RUN-OFF FROM THE SITE.
- A SILT FENCE SHALL BE INSTALLED AROUND THE PERIMETER OF ALL AND ANY STOCKPILES OF MATERIAL TO BE USED OR REMOVED FROM SITE. (LOCATION TO BE DETERMINED)
- A VISUAL INSPECTION SHALL BE DONE DAILY ON SEDIMENT CONTROL MEASURES AND CLEANED OF ANY ACCUMULATED SILT AS REQUIRED. THE DEPOSITS WILL BE DEPOSED OFF SITE AS PER THE REQUIREMENTS OF THE CONTRACT.
- SEDIMENT CONTROL BARRIERS MAY ONLY BE REMOVED TEMPORARILY WITH APPROVAL OF CONTRACT ADMINISTRATOR TO ACCOMMODATE CONSTRUCTION OPERATIONS. ALL AFFECTED BARRIERS MUST BE REINSTATED AT NIGHT WHEN CONSTRUCTION IS COMPLETED. NO REMOVAL WILL OCCUR IF THERE IS A SIGNIFICANT RAINFALL EVENT ANTICIPATED (10mm) UNLESS A NEW DEVICE HAS BEEN INSTALLED TO PROTECT EXISTING STORM AND SANITARY SEWER SYSTEMS, OR DOWNSTREAM WATERCOURSES.
- NO REFUELING OR CLEANING OF EQUIPMENT IS PERMITTED NEAR ANY EXISTING WATERWAY.
- CONTRACTOR SHALL REMOVE SEDIMENT CONTROL MEASURES WHEN, IN THE OPINION OF THE CONTRACT ADMINISTRATOR, THE MEASURES IS NO LONGER REQUIRED. NO CONTROL MEASURES SHALL BE PERMANENTLY REMOVED WITHOUT PRIOR WRITTEN AUTHORIZATION FROM THE CONTRACT ADMINISTRATOR.
- THE CONTRACTOR SHALL PERIODICALLY, OR WHEN REQUESTED BY THE CONTRACT ADMINISTRATOR, CLEAN UP ACCUMULATED SEDIMENTS AS REQUIRED.
- THE CONTRACTOR SHALL IMMEDIATELY REPORT TO THE ENGINEER ANY ACCIDENTAL DISCHARGES OF SEDIMENT MATERIAL INTO THE WATERCOURSE. APPROPRIATE RESPONSE MEASURES, INCLUDING ANY REPAIRS TO EXISTING CONTROL MEASURES OR THE IMPLEMENTATION OF ADDITIONAL CONTROL MEASURES, SHALL BE CARRIED OUT BY THE CONTRACTOR WITHOUT DELAY.
- STORMWATER SWALES TO BE COVERED WITH HYDRO-SEED AND MULCH.



244 FOUNTAIN PLACE
PROPOSED 3 - STOREY
APARTMENT BUILDING
FIRST FLOOR = 66.162
BASEMENT FLOOR = 63.215
MAIN ENTRANCE = 62.200
USE = 460.090
TOP VARIES REFER TO ARCHITECTURAL
PLANS FOR DETAILS. TOP TO REMAIN
0.15m MIN. ABOVE FINISHED GRADE



Revision	By	Appd.	YY-MM-DD	
3	REVISÉ PER NEW SITE PLAN	WAJ	SGG	18.10.26
2	ISSUED FOR COORDINATION	SL	SGG	18.08.22
1	ISSUED FOR SITE PLAN CONTROL	WAJ	DCT	16.10.14

File Name:	SL	SGG	SL	18.06.20
160401234-08	SL	SGG	SL	18.06.20

Permit-Seal	Down.	Chkd.	Dgn.	YY-MM-DD

Client/Project		TC UNITED GROUP 800 INDUSTRIAL AVENUE APARTMENT BUILDING 244 FOUNTAIN PLACE OTTAWA, ONTARIO	
Title		EROSION CONTROL PLAN AND DETAIL SHEET	
Project No.	Scale	Sheet	Revision
160401234	AS SHOWN		
Drawing No.	Sheet	Revision	
EC/DS-1	4 of 5		

W:\Projects\160401234_244 Fountain Place\Drawings\160401234-08.dwg
2018/07/26 12:39 PM By: Johnson, Warren