

Site Plan Approval

APPROVED REFUSED
THIS ___ DAY OF ___, 20__

APPROVED REFUSED
THIS ___ DAY OF ___, 20__

DON HERWEYER, MCIP, RPP, MANAGER
DEVELOPMENT REVIEW SOUTH
PLANNING, INFRASTRUCTURE AND ECONOMIC
DEVELOPMENT DEPARTMENT, CITY OF OTTAWA

DERRICK MOODIE, MANAGER
DEVELOPMENT REVIEW WEST
PLANNING, INFRASTRUCTURE AND ECONOMIC
DEVELOPMENT DEPARTMENT, CITY OF OTTAWA

APPROVED REFUSED
THIS ___ DAY OF ___, 20__

APPROVED REFUSED
THIS ___ DAY OF ___, 20__

JEFF MCEWEN, P.ENG, MANAGER
DEVELOPMENT REVIEW EAST
PLANNING, INFRASTRUCTURE AND ECONOMIC
DEVELOPMENT DEPARTMENT, CITY OF OTTAWA

DOUGLAS JAMES, MCIP, RPP, ACTING MANAGER
DEVELOPMENT REVIEW CENTRAL
PLANNING, INFRASTRUCTURE AND ECONOMIC
DEVELOPMENT DEPARTMENT, CITY OF OTTAWA

APPROVED REFUSED
THIS ___ DAY OF ___, 20__

ADAM BROWN, MANAGER
DEVELOPMENT REVIEW RURAL
PLANNING, INFRASTRUCTURE AND ECONOMIC
DEVELOPMENT DEPARTMENT, CITY OF OTTAWA

LOCALISATION MAP

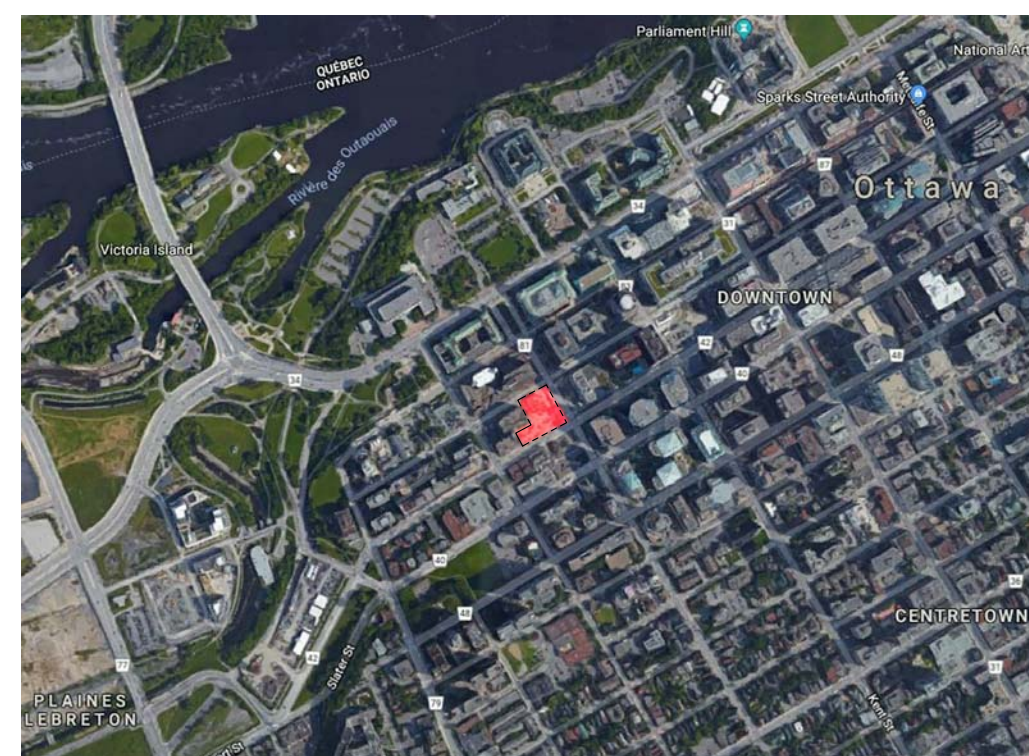
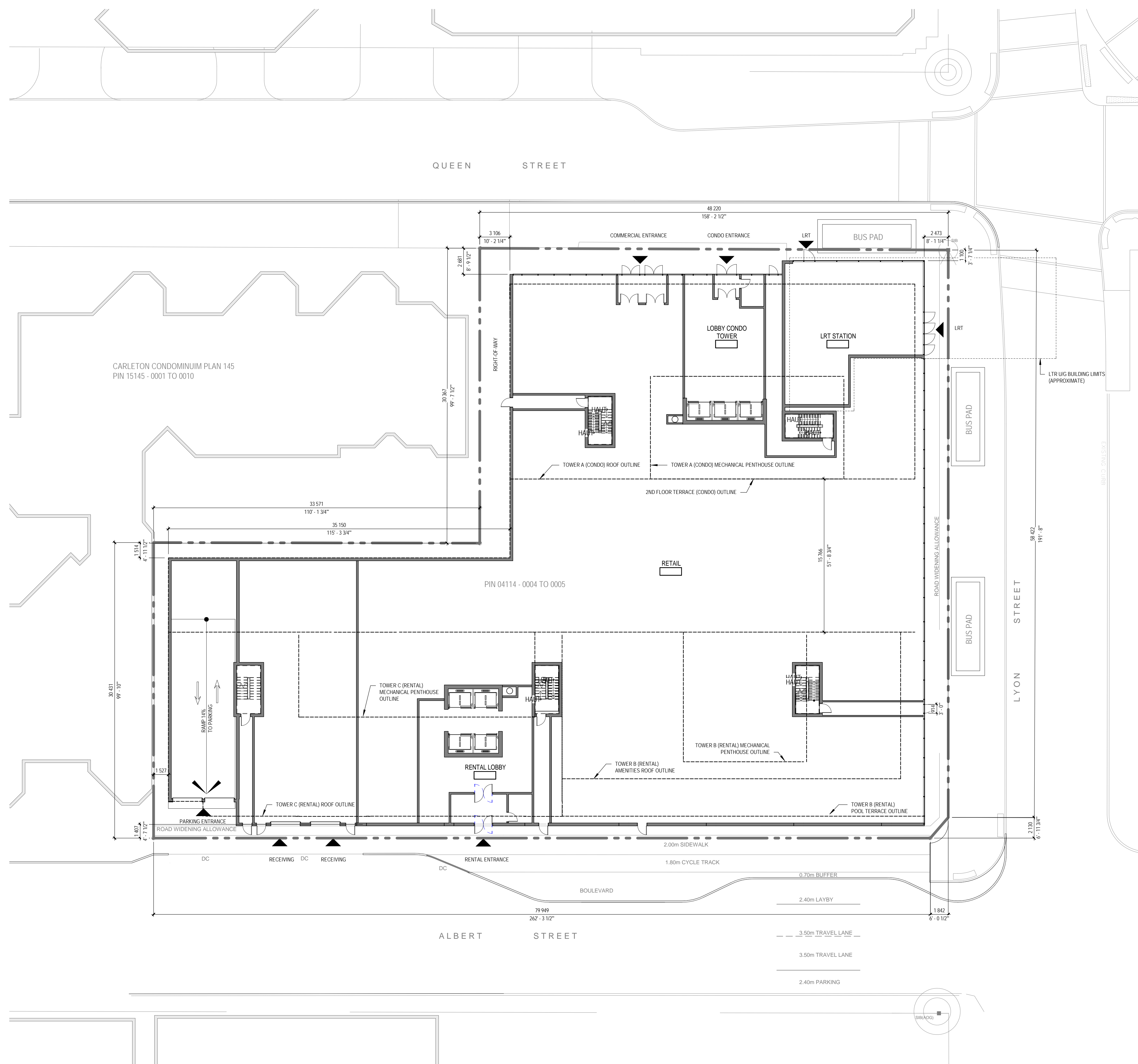


Table with 3 columns: ZONING MECHANISM, REGULATION, and PROPOSED. It details zoning requirements such as minimum lot area, building height, parking spaces, and amenity area across different categories.



SITE PLAN
1:200

1
A100

NOTES GÉNÉRALES / General Notes

- 1. Ces documents d'architecture sont la propriété exclusive de NEUF architect(e)s et ne pourront être utilisés, reproduits ou copiés sans autorisation écrite préalable. / These architectural documents are the exclusive property of NEUF architect(e)s and cannot be used, copied or reproduced without written pre-authorization.
2. Les dimensions apparentant aux documents doivent être vérifiées par l'entrepreneur avant le début des travaux. / All dimensions which appear on the documents must be verified by the contractor before to start the work.
3. Veuillez aviser l'architecte de toute dimension erreur et/ou divergences entre ces documents et ceux des autres professionnels. / The architect must be notified of all errors, omissions and discrepancies between these documents and those of the others professionals.
4. Les dimensions sur ces documents doivent être lues et non mesurées. / The dimensions on these documents must be read and not measured.

URBANISTE / Urban Planner

Fotenn
223 McLeod Street, Ottawa ON K2P 0Z8
T 613 730 0709 fotenn.com

ARCHITECTURE DE PAYSAGE / Landscape Architect

James B. Lennox & Associates Inc.
3332 Carling Avenue, Ottawa ON K2H 5A8
T 613 722 5168 jba.ca

ARPENTEUR / Surveyor

Annis O'Sullivan Vollebakk Ltd.
14 Concourse Gate, Suite 500, Nepean ON K2E 7S6
T 613 835 6666

STRUCTURE / Structure

Goodeve Structural Inc.
77 Angus Drive, Unit 18, Ottawa ON K2E 7Z7
T 613 226 4558 goodevevanthre.ca

CIVIL / Civil

Novatech Engineering
Suite 203, 240 Michael Coopers Drive, Ottawa ON K2M 1P6
T 613 254 9643 novatech-eng.com

ARCHITECTES / Architect

NEUF architect(e)s SENCRL
630, boul. René-Lévesque O. 32e étage, Montréal QC H3B 1S6
T 514 847 1117 NEUFarchitectes.com

SCEAU / Seal

NEUF ARCHITECT(E)S



CLIENT / Client



OUVRAGE / Project

ALBERT & LYON STREET DEVELOPMENT

EMPLACEMENT / Location OTTAWA NO PROJET No. 11679.00

NO REVISION DATE (aa-mm-jj)

DESSINÉ PAR / Drawn by Auteur DATE (aa.mm.jj) 18.07.26 TITRE DU DESSIN / Drawing Title SITE PLAN

VERIFIÉ PAR / Checked Vérificateur ECHELLE / Scale As indicated

REVISION / Revision NO. DESSIN / Dwg Number