



**Goodkey, Weedmark
& Associates Limited**

Consulting Engineers

1688 Woodward Dr.
Ottawa, ON
Canada
K2C 3R8

Tel. 613-727-5111
Fax 613-727-5115
info@gwal.com

Principals & Associates

A. Bogdanowicz, P.Eng.
M.G. Carriere, C.E.T.
R.J. McIntyre, P.Eng.
F.W.A. Bann, P.Eng.
R. Lefebvre, P.Eng.
D.R. Vyas, P.Eng., MIEEE
S. Hamilton, P.Eng.
J. Moffat, P.Eng.
E. Pérusse, P.Eng., ing.
R. Boivin, P.Eng., ing.
R. Leonard, P.Eng.
M. Sarasin, P.Eng.

April 19, 2018

VIA E-MAIL

Huntington Properties
1306 Wellington Street, Suite 200
Ottawa, ON
K1Y 3B2

ATTENTION: MS. LISA WESTPHAL

**SUBJECT: 46 IBER RD.,
SITE LIGHTING PLAN AND PHOTOMETRIC STUDY
OUR PROJECT NO. 2018-298**

Dear Madame:

We have designed the site lighting for the new one (1) storey commercial complex building, located at 46 Iber Road, Ottawa, in accordance with the following guidelines as requested by the City of Ottawa:

1. It must be designed using only fixtures that meet the criteria for Full Cut-Off (Sharp cut-off) Classification, as recognized by the Illuminating Engineering Society of North America (IESNA or IES), and;
2. It must result in minimal light spillage onto adjacent properties. As a guideline, 0.5 fc is normally the maximum allowable spillage.

Yours very truly,

GOODKEY, WEEDMARK & ASSOCIATES LIMITED



Divyakant (Raj) Vyas, P.Eng., MIEEE
Associate Partner

DRV/mu

e.c.: Brandon Lawrence (S.J. Lawrence Architect Incorporated)

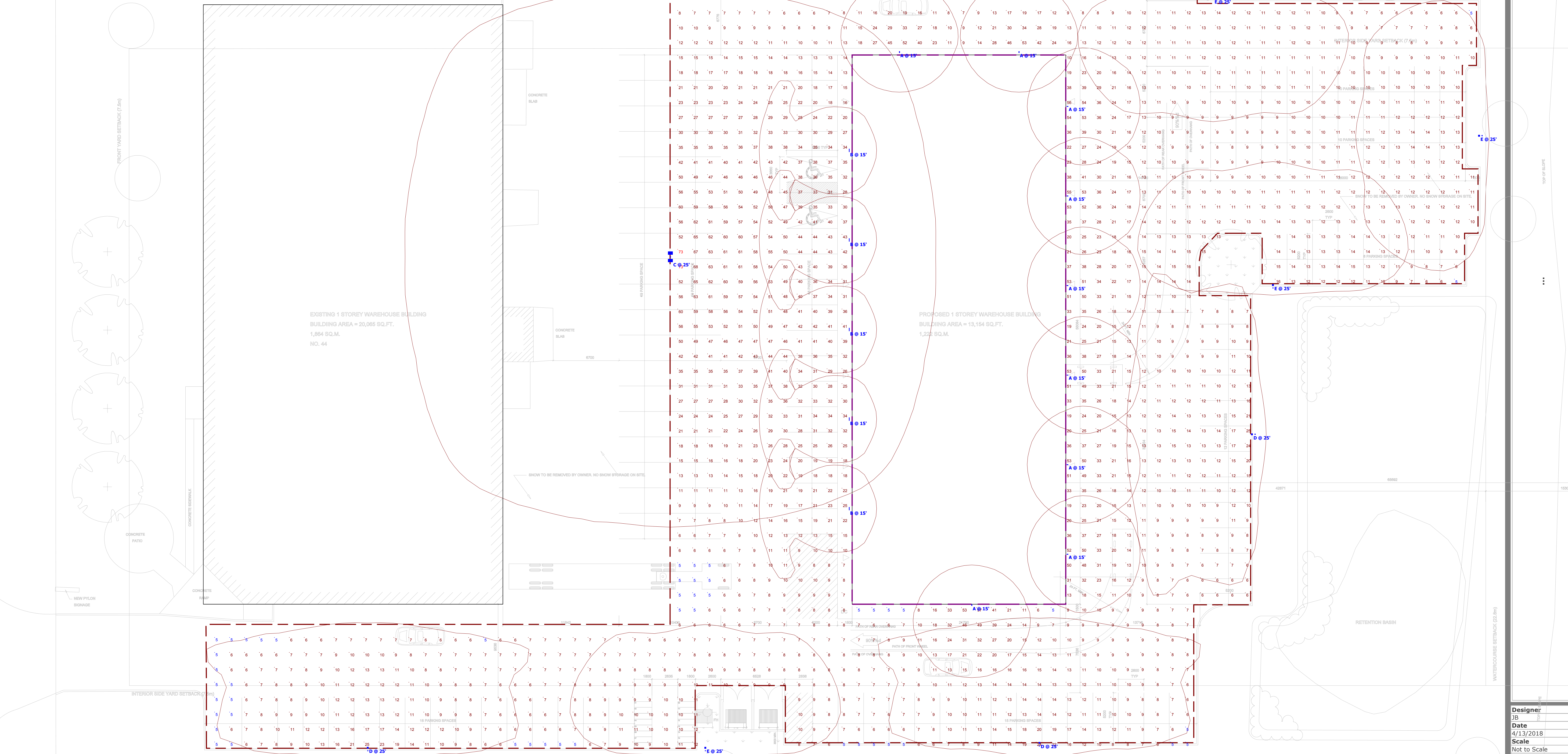
Enclosure: Photometric Study



Schedule											
Symbol	Label	Quantity	Manufacturer	Catalog Number	Description	Lamp	Number Lamps	File Name	Lumens Per Lamp	Light Loss Factor	Wattage
	A	9	EATON - LUMARK (FORMER COOPER LIGHTING)	XTOR3B-W	CROSSOUR 26W WALL MOUNT LED	EATON LED 4000K	1	XTOR3B-W.ies	2709	0.85	25.5
	B	5	EATON - INVUE (FORMER COOPER LIGHTING)	ENV-F01-LED-E1-BL4	ENTRI LED LUMINAIRE (1) LIGHTBARS WITH ACCULED OPTICS - TYPE 4 W/ SPILL LIGHT CONTROL	(7) 4000K CCT, 70 CRI LED ABSOLUTE PHOTOMETRY IS BASED ON CALIBRATION FACTORS CREATED USING LAB LUMEN STANDARDS IN GONIOPHOTOMETER WITH TEST DISTANCE OF 28.75 FEET	7	ENV-F01-LED-E1-BL4.ies	308	0.85	25.9
	C	1	EATON - MCGRAW-EDISON (FORMER COOPER LIGHTING)	GLEON-AF-05-LED-E1-SWQ-1200	GALLEON AREA AND ROADWAY LUMINAIRE (5) 70 CRI, 4000K, 1200mA LIGHTSQUARES WITH 16 LEDS EACH AND TYPE V WIDE OPTICS Retail, Roadway, Sidewalk, Site, Street, Substation, Security, Corrosion Resistant, Vandal Resistant, Wet Location ABSOLUTE PHOTOMETRY IS BASED ON CALIBRATION FACTORS CREATED USING LAB LUMEN STANDARDS IN GONIOPHOTOMETER WITH TEST DISTANCE OF 28.75 FEET	GLEON-AF-05-LED-E1-SWQ-1200.ies	80		430	0.9	640
	D	3	EATON - MCGRAW-EDISON (FORMER COOPER LIGHTING)	GLEON-AF-01-LED-E1-SL3-1200-HSS	GALLEON AREA AND ROADWAY LUMINAIRE (1) 70 CRI, 4000K, 1200mA LIGHTSQUARE WITH 16 LEDS EACH AND TYPE III SPILL LIGHT ELIMINATOR OPTICS WITH HOUSE SIDE SHIELD Retail, Roadway, Sidewalk, Site, Street, Substation, Security, Corrosion Resistant, Vandal Resistant, Wet Location ABSOLUTE PHOTOMETRY IS BASED ON CALIBRATION FACTORS CREATED USING LAB LUMEN STANDARDS IN GONIOPHOTOMETER WITH TEST DISTANCE OF 28.75 FEET	GLEON-AF-01-LED-E1-SL3-1200-HSS.ies	16		365	0.9	67
	E	4	EATON - MCGRAW-EDISON (FORMER COOPER LIGHTING)	GLEON-AF-01-LED-E1-SL4-HSS	GALLEON AREA AND ROADWAY LUMINAIRE (1) 70 CRI, 4000K, 1050mA LIGHTSQUARE WITH 16 LEDS EACH AND TYPE IV SPILL LIGHT ELIMINATOR OPTICS WITH HOUSE SIDE SHIELD Retail, Roadway, Sidewalk, Site, Street, Substation, Security, Corrosion Resistant, Vandal Resistant, Wet Location ABSOLUTE PHOTOMETRY IS BASED ON CALIBRATION FACTORS CREATED USING LAB LUMEN STANDARDS IN GONIOPHOTOMETER WITH TEST DISTANCE OF 28.75 FEET	GLEON-AF-01-LED-E1-SL4-HSS.ies	16		316	0.9	59

Statistics						
Description	Symbol	Avg	Max	Min	Max/Min	Avg/Min
Calc Zone #1	+	17 lux	73 lux	5 lux	14.6:1	3.4:1

46 IBRE ROAD, OTTAWA



Plan View
Scale - 1" = 15ft

Designer
JB
Date
4/13/2018
Scale
Not to Scale
Drawing No.
Summary