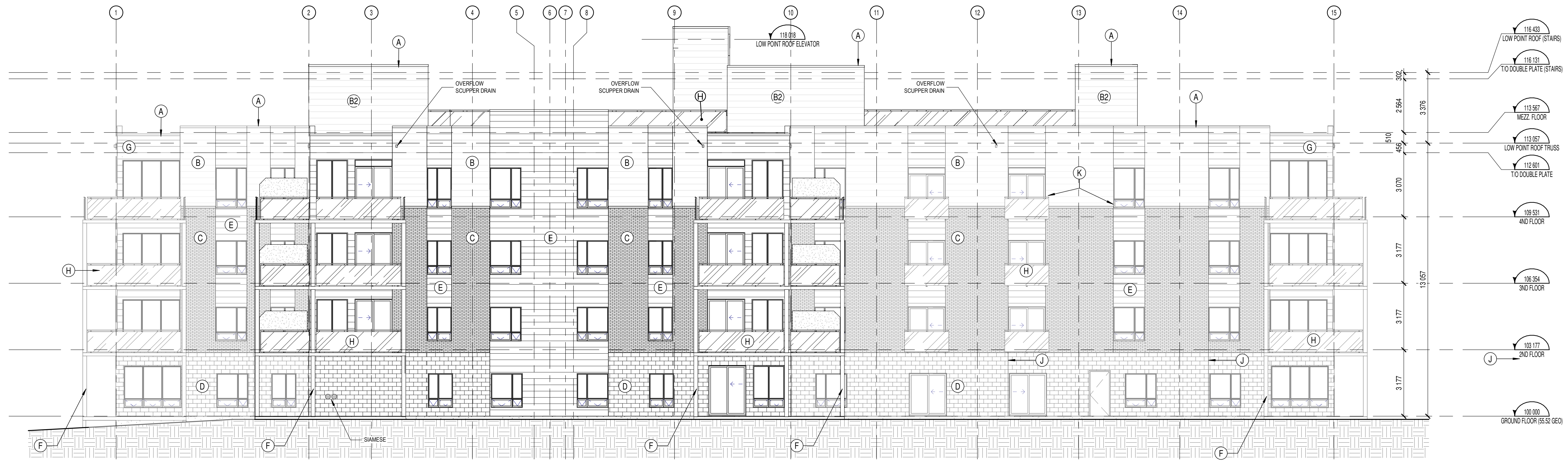


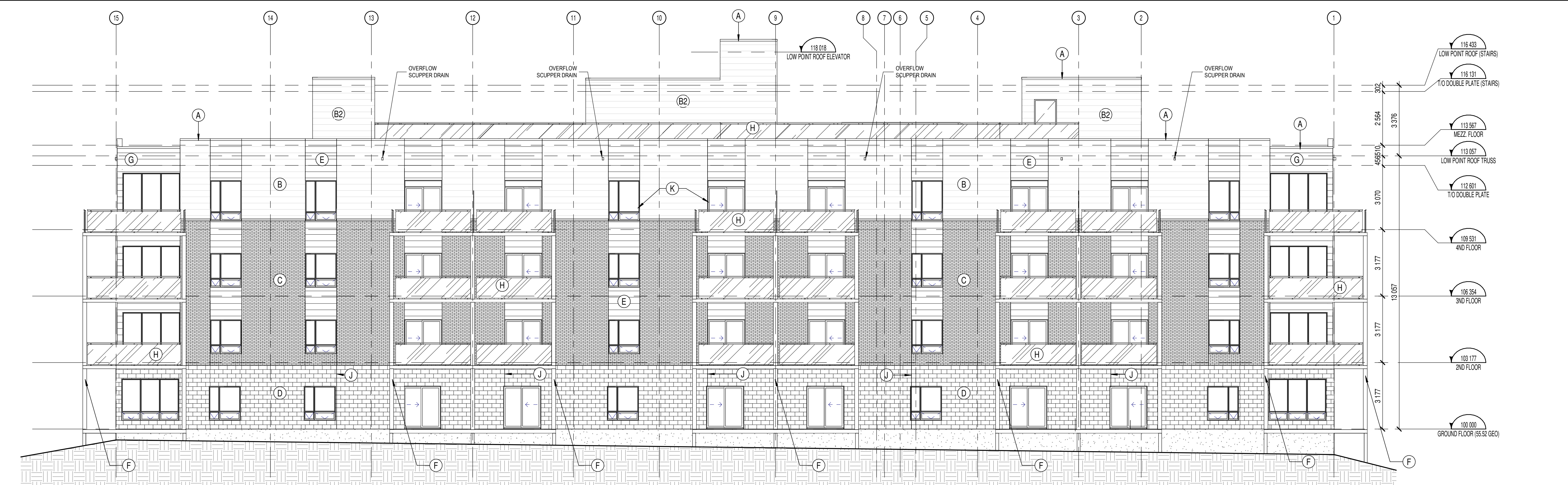
Exterior finishes legend

A	FASCIAS, METAL WORK AT ROOF & PRE-BENT METAL TRIM AROUND DOORS AND WINDOWS, COLOUR: TO MATCH WALL FINISH	B	JAMES HARDIE FIBER CEMENT LAP SIDING OR EQUIVALENT, COLOUR: LIGHT GREY	B2	JAMES HARDIE FIBER CEMENT LAP SIDING OR EQUIVALENT, COLOUR: CHARCOAL	C	MASONRY VENEER, COLOUR: BRAMPTON BRICK, COLOUR: BELFAST	D	BRAMPTON STONE, FRESSE 190-930 STANDARD, COLOUR: POLAR WHITE	E	METALLIC DISTINCTION PREPAINTED STEEL SIDING, COLOUR: CEDAR	F	PREPAINTED ALUMINUM BALCONY POST CLADDING, COLOUR: CHARCOAL	G	PREPAINTED STEEL SIDING, COLOUR: CHARCOAL	H	ALUMINUM QUADRAL WITH CLEAR GLASS INFILL	I	VERTICAL HARDIPANEL SIDING, SMOOTH FINISH, COLOUR: LIGHT GREY	J	MASONRY CONTROL JOINT, COLOUR: MATCH ADJACENT MASONRY	K	WINDOW FRAME, COLOUR: BLACK
----------	--	----------	--	-----------	--	----------	---	----------	--	----------	---	----------	---	----------	---	----------	--	----------	---	----------	---	----------	-----------------------------

NOTE: ALL CHANGE IN HEIGHT OF PARAPETS SHOULD BE IN LINE WITH THE EDGE OF BRICK BELOW



SOUTH ELEVATION 1:100



NORTH ELEVATION 1:100

NOTES GÉNÉRALES / General Notes

- Ces documents d'architecture sont la propriété exclusive de NEUF architect(e)s et ne doivent être utilisés, reproduits ou copiés sans autorisation écrite préalable. / These architectural documents are the exclusive property of NEUF architect(e)s and cannot be used, copied or reproduced without written pre-authorization.
- Les dimensions apparaissant aux documents doivent être vérifiées par l'entrepreneur avant le début des travaux. / All dimensions which appear on the documents must be verified by the contractor before to start the work.
- Veuillez aviser l'architecte de toute dimension erreur et/ou divergences entre ces documents et ceux des autres professionnels. / The architect must be notified of all errors, omissions and discrepancies between these documents and those of the others professionals.
- Les dimensions sur ces documents doivent être lues et non mesurées. / The dimensions on these documents must be read and not measured.

APPROVED
By Jeff McEwen at 3:19 pm, Oct 26, 2018

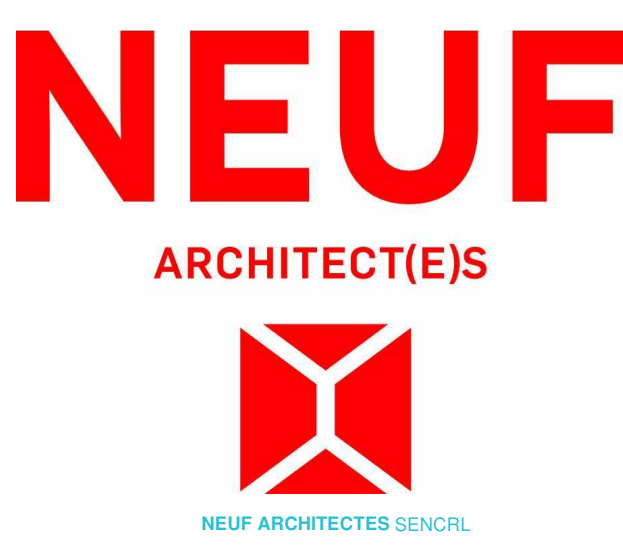
Jeff McEwen
JEFF MCEWEN P.ENG.
MANAGER, DEVELOPMENT REVIEW EAST BRANCH
PLANNING, INFRASTRUCTURE & ECONOMIC
DEVELOPMENT DEPARTMENT, CITY OF OTTAWA

ARCHITECTURE DE PAYSAGE Landscape Architect
Levstek Consultants
5971 Highcrest, Ottawa ON K0A 0W0
T 613 828 0518 larocquelevstek.com

CIVIL Civil
Stantec
400 - 1331 Clys Avenue, Ottawa ON K2C 3G4
T 613 724 6337 krc@stantec.com

ARCHITECTES Architect
NEUF architect(e)s SENCRIL
630, St-Jacques, Montréal QC H3B 1S6
T 514 847 1117 NEUFarchitectes.com

SCEAU / Seal



CLIENT Client



OUVRAGE Project

PETRIES II BLOCK 8
93 units
EMPLACEMENT Location NO PROJET No.
ORLEANS, ON 10498.02

NO	RÉVISION	DATE (aa-mm-jj)
A	Site Plan Application, 3rd review	2018-06-06
B	Site Plan Application, 4th review	2018-08-22

DESSINÉ PAR Drawn by
A.B./J.-L.B.
DATE (aa-mm-jj)
06/14/17
TITRE DU DESSIN Drawing Title

VÉRIFIÉ PAR Checked
Vérificateur
ÉCHELLE Scale
Comme
indiqué

NORTH & SOUTH ELEVATIONS

RÉVISION Revision NO. DESSIN Dwg Number

B A400

C:\Fichiers Revit\Local\1049802_ARCH\Block 8_R18_abourassa.rvt