

TOPOGRAPHIC PLAN OF
3735 St. Joseph Boulevard

PART OF LOT 31
CONCESSION 1 (OLD SURVEY)
Geographic Township of Cumberland
CITY OF OTTAWA

Prepared by Annis, O'Sullivan, Vollebek Ltd.

Metric
DISTANCES SHOWN ON THIS PLAN ARE IN METRES AND
CAN BE CONVERTED TO FEET BY DIVIDING BY 0.3048

Scale 1 : 200
8.0 6.0 4.0 2.0 0 2 4 6 8 Metres

Apr 12 2018
Date
E.H. Herweyer O.L.S.

REVISION
March 9th, 2018: Plan updated to show existing elevations
along St. Joseph Boulevard.

Notes & Legend

Denotes	
	Deciduous Tree
	Coniferous Tree
	Fire Hydrant
	Valve Chamber (Watermain)
	Water Valve
	Maintenance Hole (Unidentified)
	Maintenance Hole (Storm Sewer)
	Maintenance Hole (Sanitary)
	Underground Storm Sewer
	Underground Sanitary Sewer
	Underground Water
	Underground Bell
	Underground Gas
	Overhead Wires
	Anchor
	Wooden Pole
	Metal Pole
	Diameter
	Location of Elevations
	Top of Concrete Curb Elevation
	Top of Grate
	Centreline
	Property Line

SITE AREA = 5082 m²

BOUNDARY INFORMATION COMPILED FROM PLAN 4R-29604.

Distances shown on this plan are ground distances and can be converted to grid distances by multiplying by the combined scale factor of 0.999967.

Bearings are grid, derived from the northerly limit of St. Joseph Boulevard, having a bearing of N82°08'30"E as shown on Plan 4R-29604 and referred to the Central Meridian of MTM Zone 9 (76°30' West Longitude) NAD-83 (original).

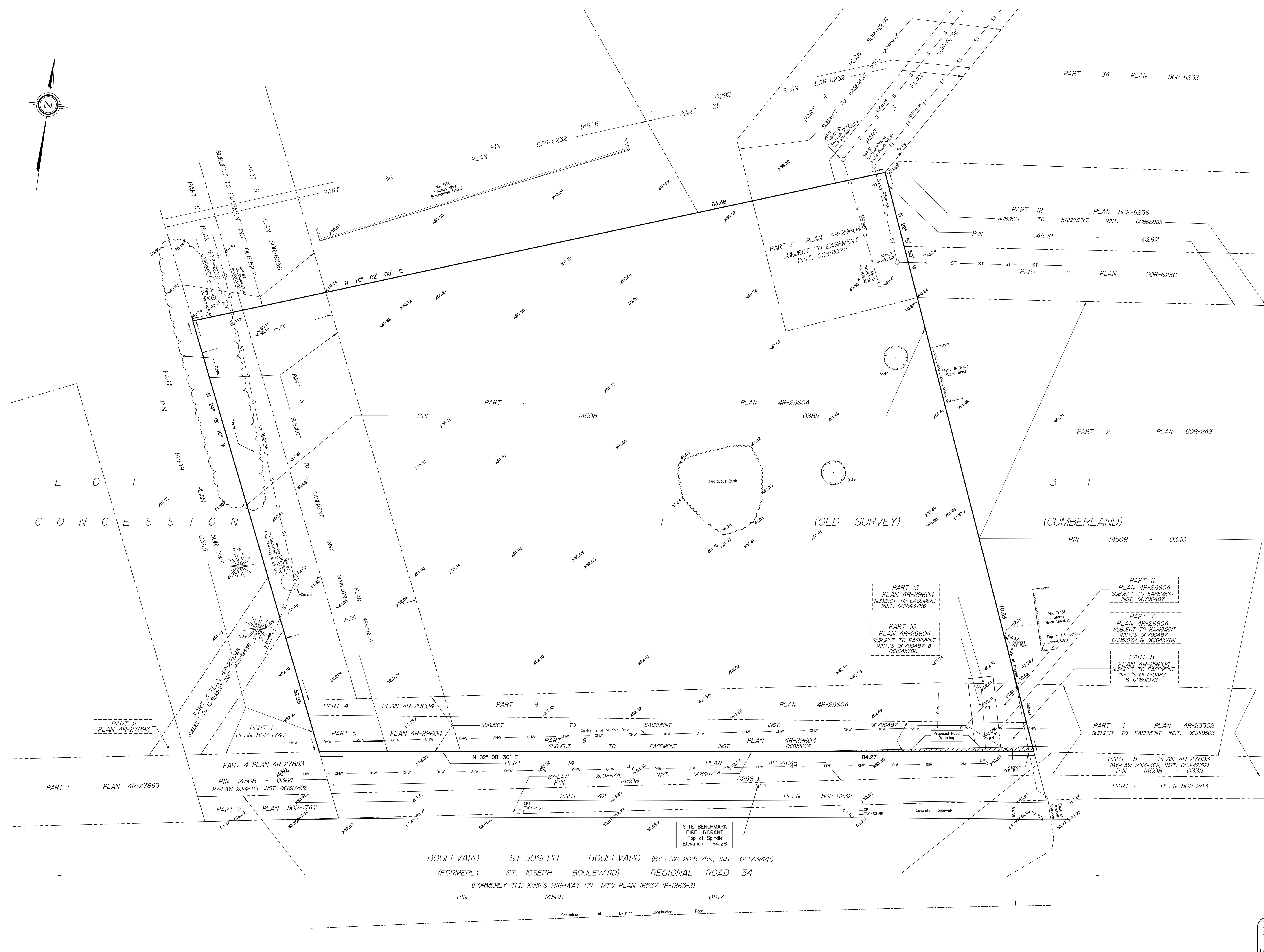
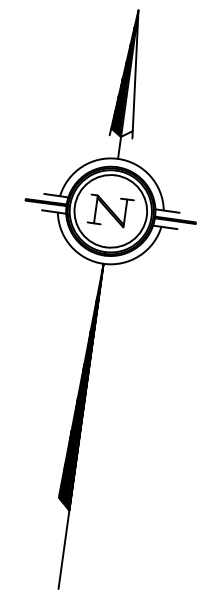
ELEVATION NOTES

- Elevations shown are geodetic and are referred to the CGVD28 geodetic datum.
- It is the responsibility of the user of this information to verify that the job benchmark has not been altered or disturbed and that its relative elevation and description agrees with the information shown on this drawing.

UTILITY NOTES

- This drawing cannot be accepted as acknowledging all of the utilities and it will be the responsibility of the user to contact the respective utility authorities for confirmation.
- Only visible surface utilities were located.
- A field location of underground plant by the pertinent utility authority is mandatory before any work involving breaking ground, probing, excavating etc.
- MH-S marked by (*), all underground services and inverts are taken from City of Ottawa Engineering drawings 2859 sheet 3, C-35-08, M-2490-3 Sheets 7 of 11 and 9 of 11.
- Proposed Centerline of road, curbs, sidewalk, catchbasins, maintenance holes and underground services are taken from City of Ottawa Engineering Contract No. ISD11-5147 pages 37 and 38.
- Water main diameter taken from Ottawa-Carleton Engineering Drawing No. 2859 Sheet 3. Underground utilities as marked on site (by others) are shown.

© Annis, O'Sullivan, Vollebek Ltd. 2018. THIS PLAN IS PROTECTED BY COPYRIGHT.
ANNIS, O'SULLIVAN, VOLLEBEK LTD.
14 Concourse Gate, Suite 500
Nepean, Ont. K2E 7S6
Phone: (613) 727-0850 Fax: (613) 727-1079
Email: Annis@anniso.com
Job No. 16204-15 Blueprint Bldg P133 CI OS QU T 02



V:\2018\2859-15\Drawings\16204-15 Blueprints\Bldg P133 CI OS QU T 02.dwg