

W:\active\160401428-27-31 Robinson Avenue Design\drawing\160401428-28.dwg
22/01/2018 14:44 W:\active\160401428-27-31 Robinson Avenue Design\drawing\160401428-28.dwg

GENERAL NOTES

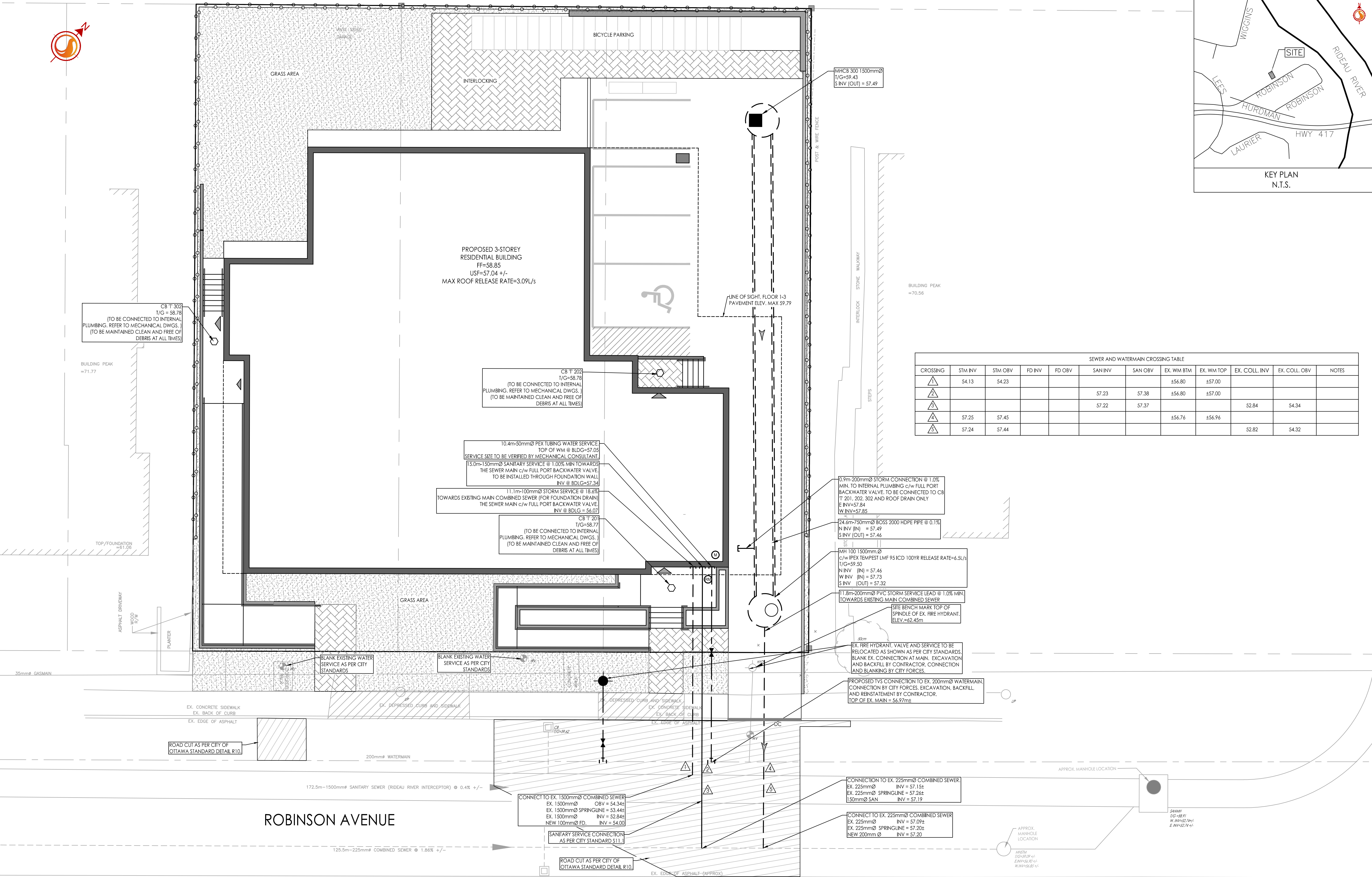
- ALL WORK SHALL BE CARRIED OUT IN COMPLIANCE WITH THE ONTARIO OCCUPATIONAL HEALTH AND SAFETY ACT AND REGULATIONS FOR CONSTRUCTION PROJECTS.
- ALL WORK AND MATERIALS TO CONFORM WITH CURRENT MINISTRY OF THE ENVIRONMENT & ENERGY OF ONTARIO, CITY OF OTTAWA AND ONTARIO PROVINCIAL STANDARDS AND SPECIFICATIONS. LOCAL UTILITY STANDARDS AND MINISTRY OF TRANSPORTATION STANDARDS WILL APPLY WHERE REQUIRED.
- THE CONTRACTOR IS ADVISED THAT WORKS BY OTHERS MAY BE ONGOING DURING THE PERIOD OF THIS CONTRACT. THE CONTRACTOR SHALL COORDINATE CONSTRUCTION ACTIVITIES AND COORDINATION WITH ALL OTHER CONTRACTORS AND PREVENT CONSTRUCTION CONFLICTS.
- THE INFORMATION SHOWN FOR EXISTING UTILITIES WAS PROVIDED BY OTHERS. THE CONTRACTOR IS RESPONSIBLE FOR LOCATING AND PROTECTING ALL UTILITIES DURING CONSTRUCTION. ALL EXISTING UTILITIES MUST BE LOCATED AND VERIFIED BY EACH UTILITY PRIOR TO COMMENCEMENT OF WORK. ANY VARIANCE IS TO BE IMMEDIATELY REPORTED TO THE ENGINEER. LOST TIME DUE TO FAILURE OF THE CONTRACTOR TO CONFIRM UTILITY LOCATIONS AND NOTIFY THE ENGINEER OF POSSIBLE CONFLICTS PRIOR TO CONSTRUCTION WILL BE AT THE CONTRACTORS EXPENSE.
- ALL CONSTRUCTION SHALL BE CARRIED OUT IN ACCORDANCE WITH THE RECOMMENDATIONS MADE IN THE GEOTECHNICAL REPORT.
- THE CONTRACTOR IS RESPONSIBLE FOR OBTAINING ALL PERMITS REQUIRED AND TO BEAR THE COST OF SAME INCLUDING WATER PERMIT AND ASSOCIATED COSTS.
- ALL DISTURBED AREAS SHALL BE REINSTATED TO EQUAL OR BETTER CONDITION TO THE SATISFACTION THE ENGINEER AND THE CITY. PAVEMENT REINSTATEMENT FOR SERVICE AND UTILITY CUTS SHALL BE IN ACCORDANCE WITH OPSS 509.010 AND OPSS 310.
- BENCHMARKS: IT IS THE RESPONSIBILITY OF THE CONTRACTOR TO VERIFY THAT THE SITE BENCHMARK(S) HAS NOT BEEN ALTERED OR DISTURBED AND THAT ITS RELATIVE ELEVATION AND DESCRIPTION AGREES WITH THE INFORMATION SHOWN ON DRAWING GP-1.
- THE CONTRACTOR SHALL PROVIDE TO THE ENGINEER 1 [ONE] SET OF AS CONSTRUCTED SITE SERVING, GRADING, AND SITE ELECTRICAL DWGS.
- ALL EXISTING SERVICES TO BE ABANDONED AS PER S11.4.

WATERMAINS

- ALL WATERMAINS, WATER SERVICES, CONNECTIONS AND APPURTENANCES AS PER CITY OF OTTAWA STANDARDS. THE CONTRACTOR SHALL CO-ORDINATE AND PAY ALL RELATED COSTS INCLUDING THE COST OF CONNECTION, INSPECTION AND DISINFECTION BY CITY OF OTTAWA PERSONNEL. WATERMAIN TRENCH TO BE IN ACCORDANCE WITH CITY OF OTTAWA W17.
- WATER SERVICES ARE TO BE PEX PIPE AS PER CITY OF OTTAWA STANDARD W26 [UNLESS OTHERWISE NOTED, STAND POST TO BE INSTALLED AT PROPERTY LINE.
- ALL WATERMAINS SHALL HAVE MIN. COVER OF 2.4m. WATERMAINS ARE TO BE INSTALLED TO THE ELEVATIONS SHOWN ON THE APPROVED SITE SERVING DRAWING. WHERE SPECIFIC WATERMAIN ELEVATIONS ARE NOT SHOWN ON SERVING DRAWING, A MINIMUM COVER OF 2.4m FROM PROPOSED GRADES, AS SHOWN ON THE GRADING PLAN, MUST BE MAINTAINED AT ALL TIMES. IN PREGRADE AREAS COVER TO BE FROM PREGRADE ELEVATIONS.
- ALL WATERMAIN BENDS, JOINTS, TEES AND PLUGS SHALL BE MECHANICALLY RESTRAINED IN ACCORDANCE WITH CITY OF OTTAWA STANDARDS.
- WATERMAINS MUST COMPLY WITH MINIMUM HORIZONTAL AND VERTICAL CLEARANCES IN ACCORDANCE WITH LOCAL PROVINCIAL GUIDELINES AND THE APPLICABLE BUILDING AND PLUMBING CODE. WHERE HORIZONTAL SEPARATIONS CANNOT BE ACHIEVED, APPROVAL FROM THE ENGINEER MUST BE OBTAINED AND A MINIMUM 500mm VERTICAL SEPARATION MUST BE MAINTAINED.
- ALL WATERMAINS SHALL BE HYDROSTATICALLY TESTED IN ACCORDANCE WITH THE CITY OF OTTAWA AND ONTARIO GUIDELINES UNLESS OTHERWISE DIRECTED. PROVISIONS FOR FLUSHING WATER LINE PRIOR TO TESTING, ETC., MUST BE PROVIDED.
- ALL WATERMAINS SHALL BE BACTERIOLOGICALLY TESTED IN ACCORDANCE WITH THE CITY OF OTTAWA AND ONTARIO GUIDELINES. ALL CHLORINATED WATER TO BE DISCHARGED AND PRETREATED TO ACCEPTABLE LEVELS PRIOR TO DISCHARGE. ALL DISCHARGED WATER MUST BE CONTROLLED AND TREATED SO AS NOT TO ADVERSELY EFFECT THE ENVIRONMENT. IT IS THE RESPONSIBILITY OF THE CONTRACTOR TO ENSURE THAT ALL MUNICIPAL AND/OR PROVINCIAL REQUIREMENTS ARE FOLLOWED.
- CATHODIC PROTECTION PER CITY OF OTTAWA W40 AND W42.
- EXISTING- RESIDENTIAL WATER SERVICES TO BE BLANKED.

STORM AND SANITARY SEWERS

- SEWER TRENCH SHALL CONSIST OF CLASS 'B' BEDDING PER CITY OF OTTAWA STANDARDS S6 AND S7. COMPACTION SHALL BE A MINIMUM OF 96% STANDARD PROCTOR DENSITY.
- FOR CONSTRUCTION DETAILS NOT SHOWN ON PLANS, REFERENCE SHALL BE MADE TO THE ONTARIO PROVINCIAL STANDARDS DRAWINGS AND CITY OF OTTAWA STANDARDS.
- SERVICES TO BUILDINGS TO BE TERMINATED 1.0m FROM THE FACE OF BUILDING UNLESS OTHERWISE NOTED.
- LASER ALIGNMENT CONTROL TO BE UTILIZED ON ALL SEWER INSTALLATIONS.
- FROST PROTECTION PER CITY OF OTTAWA STANDARD DRAWING W22 WHERE THERE IS LESS THAN 1.5m OF COVER ABOVE THE SEWER SERVICES.
- CONTRACTOR SHALL PERFORM LEAKAGE TESTING, IN THE PRESENCE OF THE CONSULTANT, FOR SANITARY SEWERS IN ACCORDANCE WITH OPSS 410 AND OPSS 407. A COPY OF THE INSPECTION REPORT SHALL BE SUBMITTED TO THE CONSULTANT FOR REVIEW.
- STORM AND SANITARY SERVICE CONNECTION AS PER CITY STD S11.1.

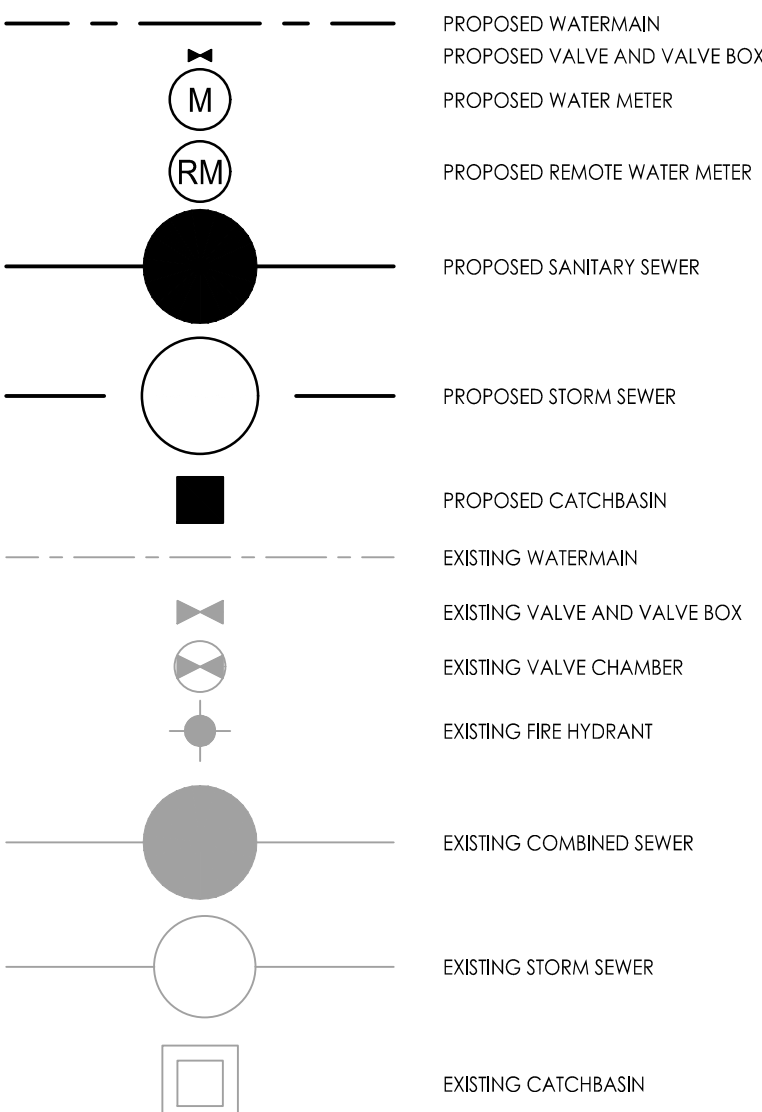


Stantec Consulting Ltd.
400 - 1331 Clyde Avenue
Ottawa ON
Tel. 613.722.4420
www.stantec.com

Copyright Reserved

The Contractor shall verify and be responsible for all dimensions. DO NOT scale the drawing - any errors or omissions shall be reported to Stantec without delay.
The Copyrights to all designs and drawings are the property of Stantec. Reproduction or use for any purpose other than that authorized by Stantec is forbidden.

Legend



Notes

- TOPOGRAPHIC SURVEY AND BENCHMARK COMPLETED BY STANTEC GEOMETRICS LTD. DATED APRIL 10, 2018.
- SITE PLAN PREPARED BY RUBIN & ROTMAN ARCHITECTS DATED SEPTEMBER 17, 2018.

1	ISSUED TO CITY FOR REVIEW	KK	DT	18.10.24
Revision		By	Appd.	YY.MM.DD

File Name:	160401428-D8	JP	KK	SL	18.06.13
		Dwn.	Chkd.	Dsgn.	YY.MM.DD

Permit-Seal

Client/Project

ROBINSON VILLAGE II
LIMITED PARTNERSHIP

3 STOREY APARTMENT
29 ROBINSON AVENUE
OTTAWA, ONTARIO

Title

SITE SERVING PLAN

Project No.

160401428

Drawing No.

SSP-1

Scale

1:100

Sheet

2 of 5

Revision

1