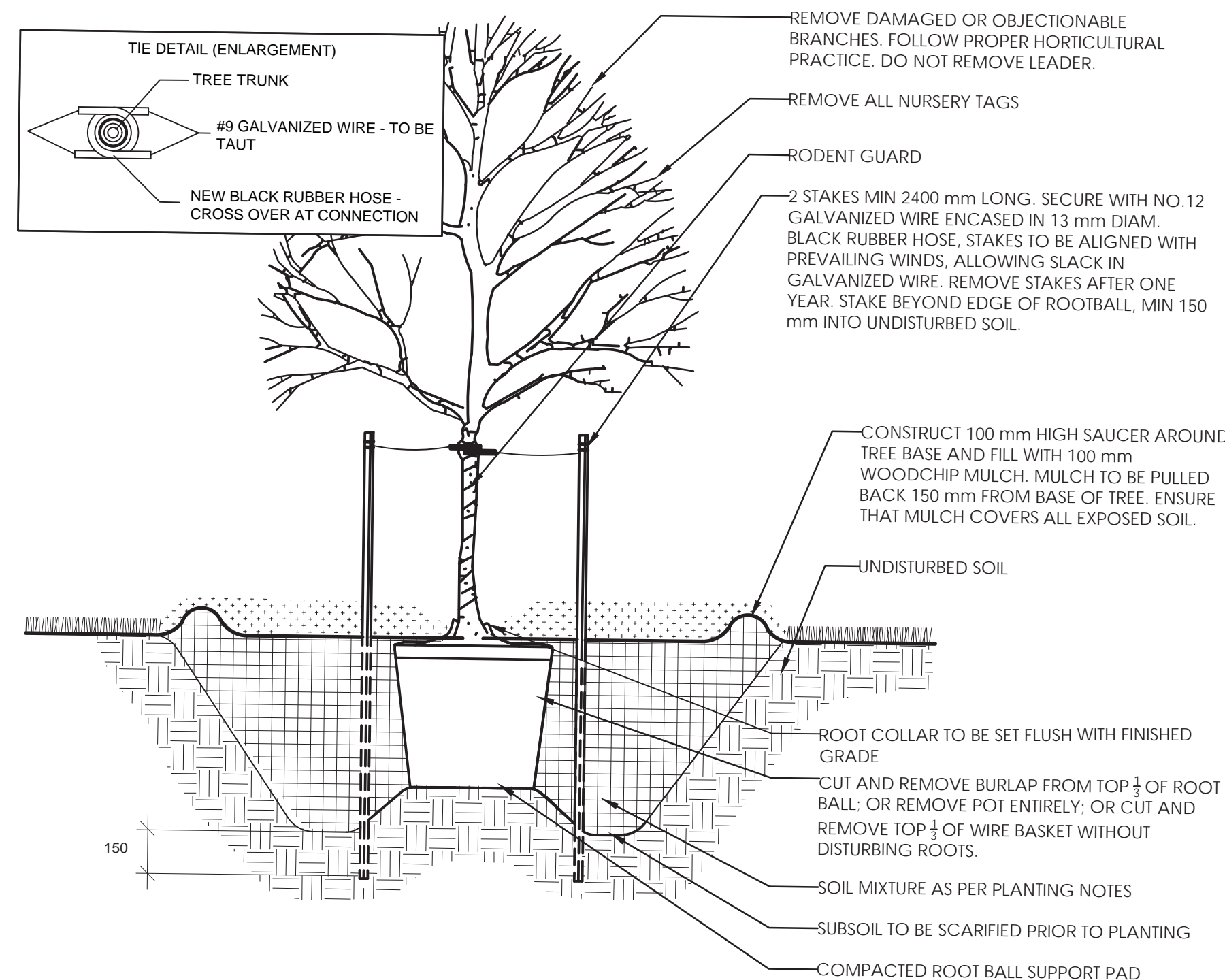
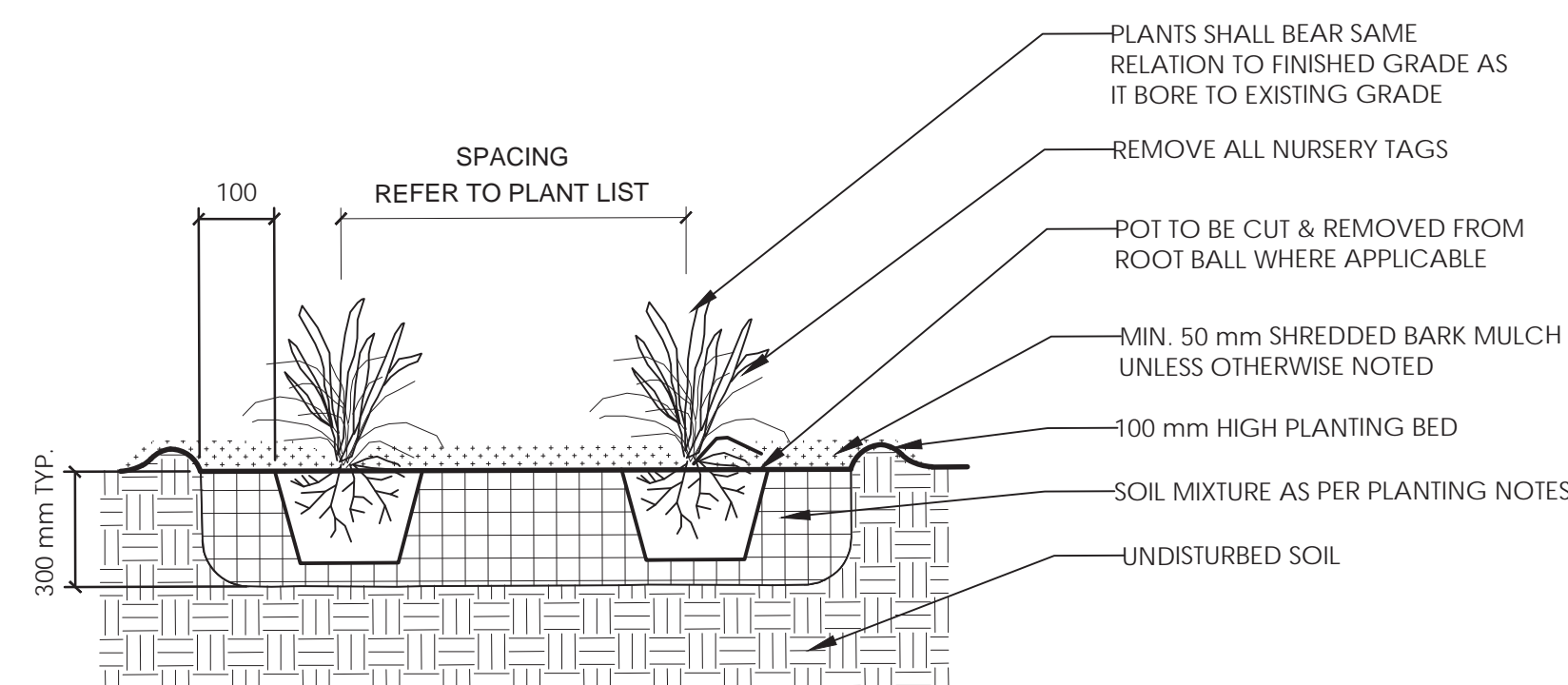


PLANTING NOTES

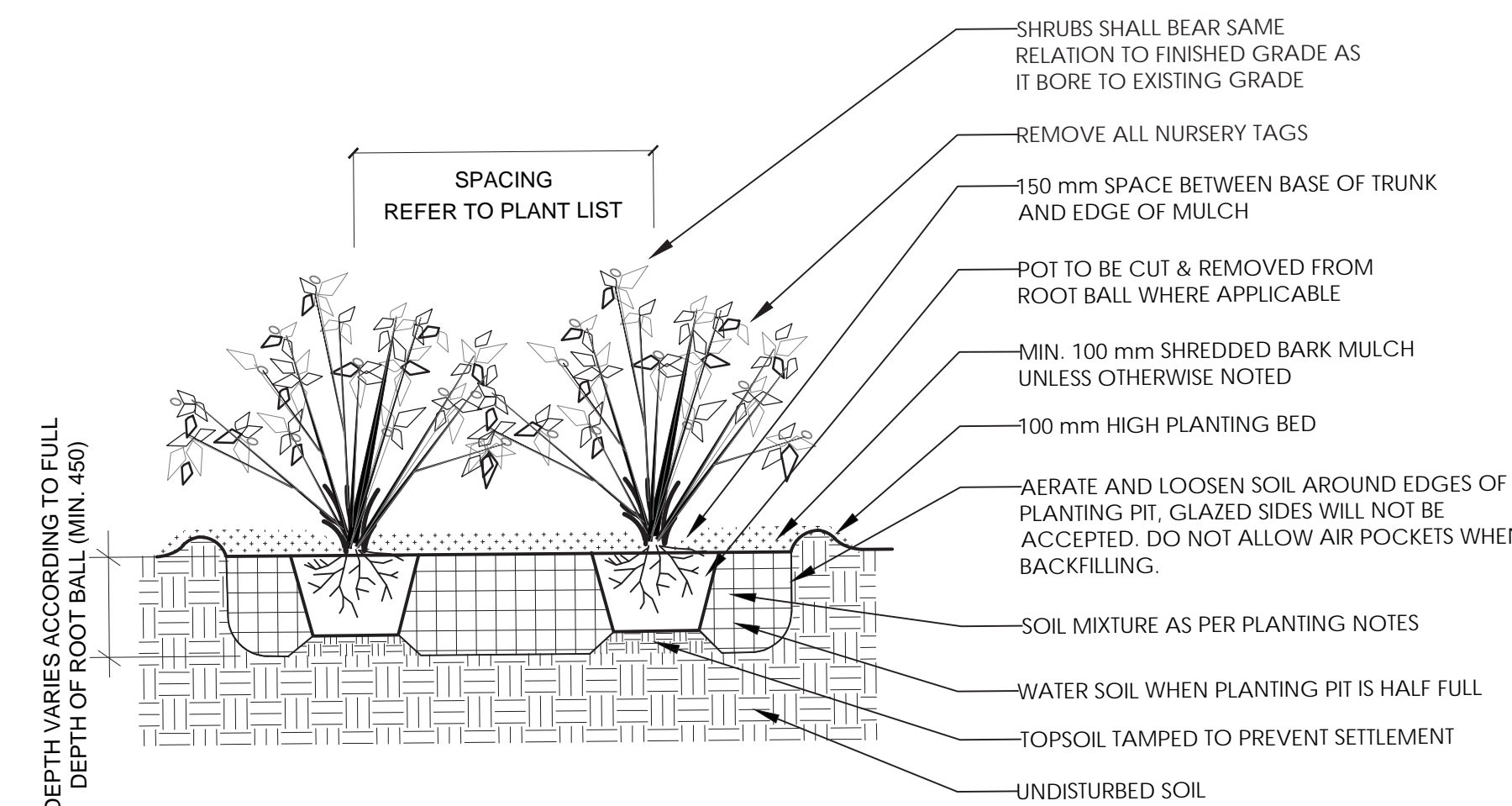
1. THE DETAILS ON THIS SHEET DO NOT REPRESENT ANY PARTICULAR SPECIES.
2. TREES AND SHRUBS AS INDICATED IN THE DETAILS REPRESENT BOTH CONIFEROUS AND DECIDUOUS SPECIES.
3. MATERIAL PLANTED IN GROUP SHALL BE SET IN CONTINUOUS PLANTING BEDS.
4. CENTRE LINE OF SHRUBS SHALL NOT BE CLOSER THAN 2.4m FROM BUILDING FACE TO PROTECT BUILDING FOOTINGS AND INSULATION.
5. PRUNING - TO SUIT SPECIES - PRUNE BRANCHES BY 1/3 TO REMOVE DAMAGED OR OBJECTIONABLE BRANCHES FOLLOWING PROPER HORTICULTURAL PRACTICE. DO NOT PRUNE LEADERS.
6. FIRMLY COMPACT BACKFILLED PLANTING MIXTURE TO ELIMINATE AIR POCKETS OR PREVENT SETTLEMENT.
7. PLANTING MATERIAL QUALITY STANDARDS:
 - ALL PLANT MATERIALS TO CONFORM TO THE CANADIAN NURSERY LANDSCAPE ASSOCIATION FOR VARIETY, SIZE AND CONDITION.
 - PLANT MATERIAL COLLECTED FROM WILD SOURCES WILL NOT BE ACCEPTED.
 - LANDSCAPE ARCHITECT RESERVES THE RIGHT TO REFUSE ACCEPTANCE OF ANY PLANT DISPLAYING POOR GROWTH HABITS, INJURY OR DISEASE.
 - ANY PLANTS THAT DO NOT CONFORM TO THE ABOVE STANDARDS WILL BE PROMPTLY REMOVED FROM THE SITE BY THE CONTRACTOR AND REPLACED WITH MATERIAL OF ACCEPTABLE QUALITY AT NO ADDITIONAL COST TO THE PROJECT.



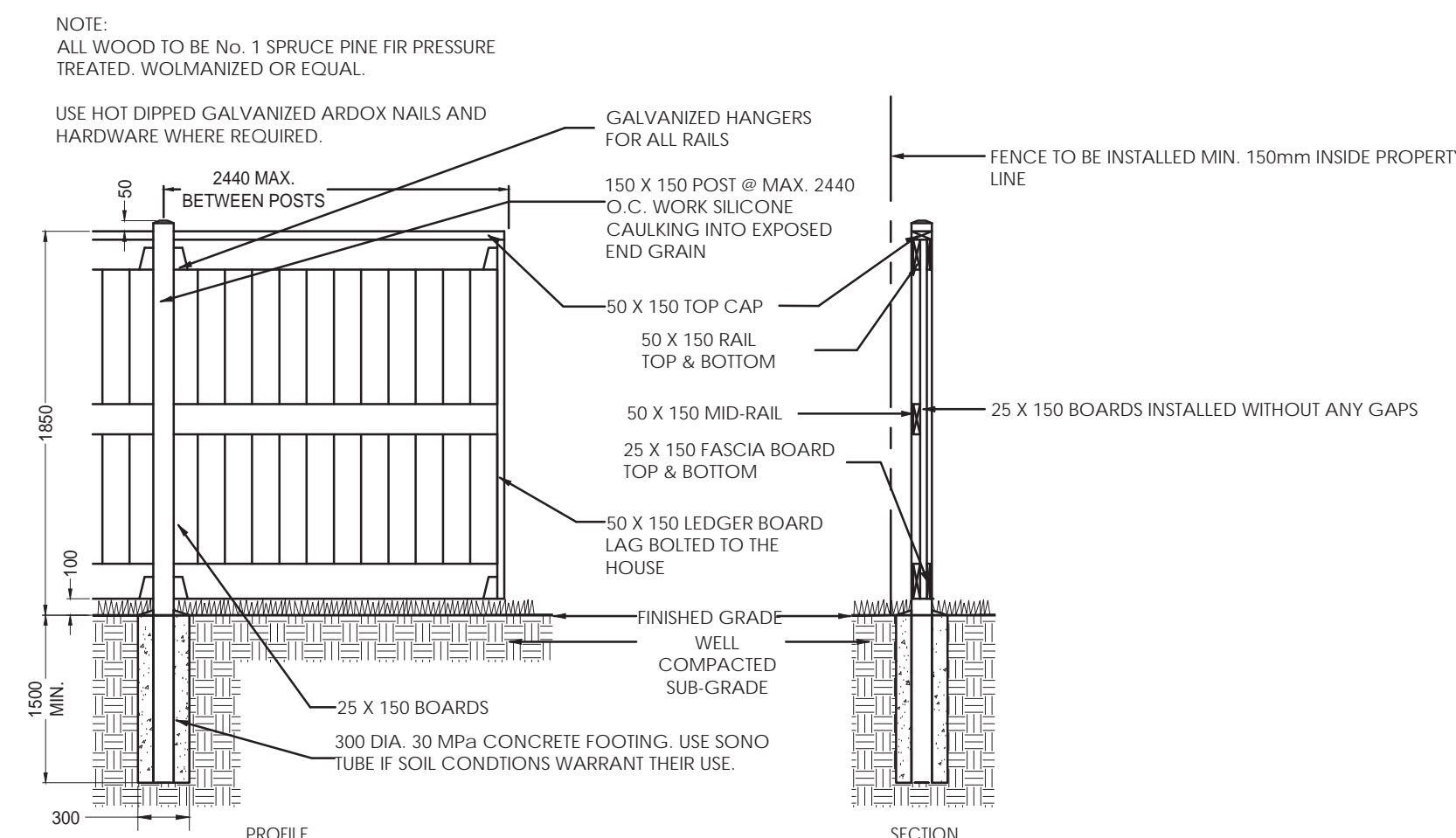
1 DECIDUOUS TREE PLANTING
N.T.S.



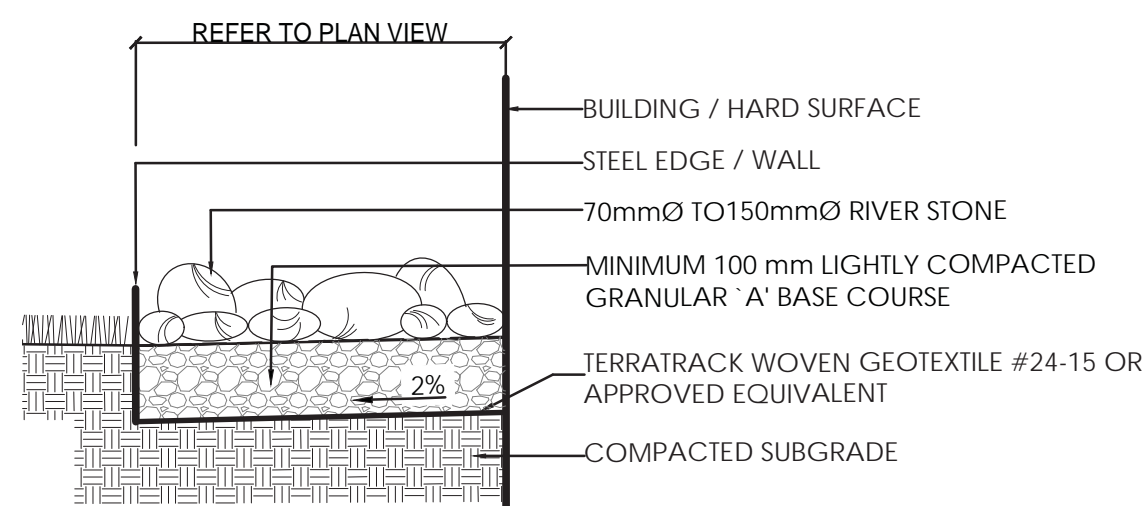
2 PERENNIAL PLANTING
N.T.S.



3 SHRUB PLANTING
N.T.S.

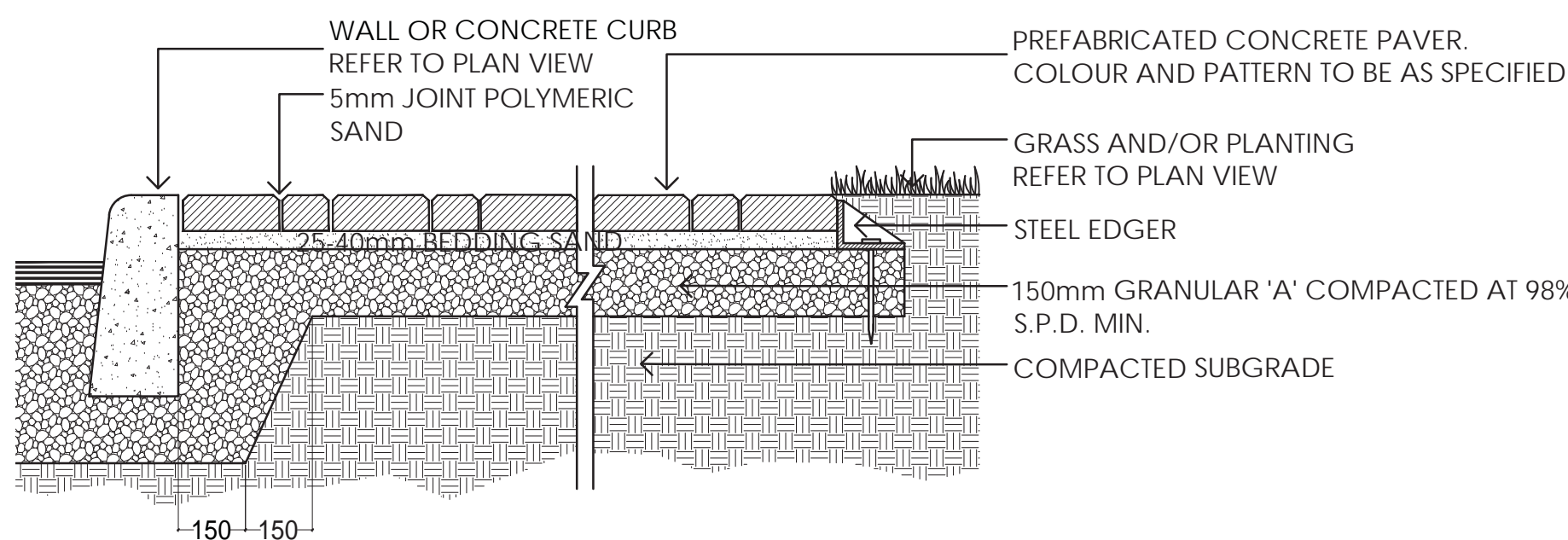


4 1.5m BOARD ON BOARD WOODEN FENCE
N.T.S.



- NOTES:
1. RIVER STONES SHALL BE FREE FROM CRACKS AND FISSURES AND SHALL BE FREE FROM SAND CLAY AND OTHER DELETERIOUS MATERIAL.
 2. RIVER STONES SHALL BE LIGHTLY COMPACTED TO EMBED INTO BASE COURSE.

5 RIVERWASHED STONES
N.T.S.



6 PAVERS
N.T.S.

Notes

1. TOPOGRAPHIC SURVEY AND BENCHMARK COMPLETED BY STANTEC GEOMATICS LTD. DATED APRIL 12, 2018
2. SITE PLAN PREPARED BY RUBIN & ROTMAN ARCHITECTS DATED SEPTEMBER 27, 2018

| Revision | By | Appd. | YY.MM.DD |
|----------|---------------------------|-------|--------------|
| 1 | ISSUED TO CITY FOR REVIEW | MHS | ILL 18.10.26 |

| File Name | MHS | ILL | 18.07.06 |
|--------------|-----|------|----------|
| 160401428-LB | Dim | Chkd | Dsgn |

Permit-Seal



Client/Project
ROBINSON VILLAGE II LIMITED PARTNERSHIP

3 STOREY APARTMENT
29 ROBINSON AVENUE
OTTAWA, ONTARIO

Title
LANDSCAPE DETAILS

| Project No. | Scale | |
|-------------|--------|----------|
| 160401428 | VARIES | |
| Drawing No. | Sheet | Revision |