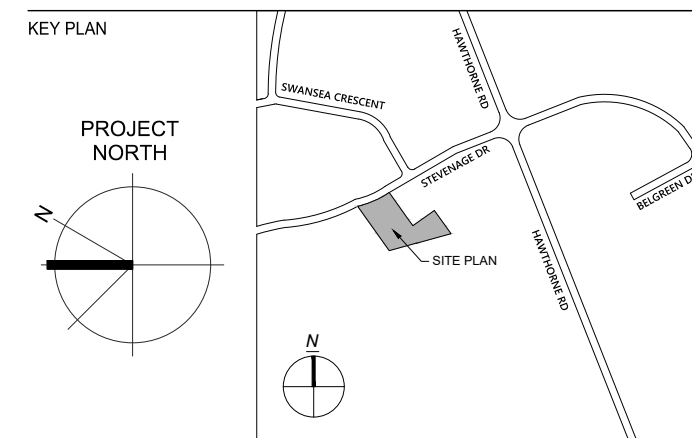
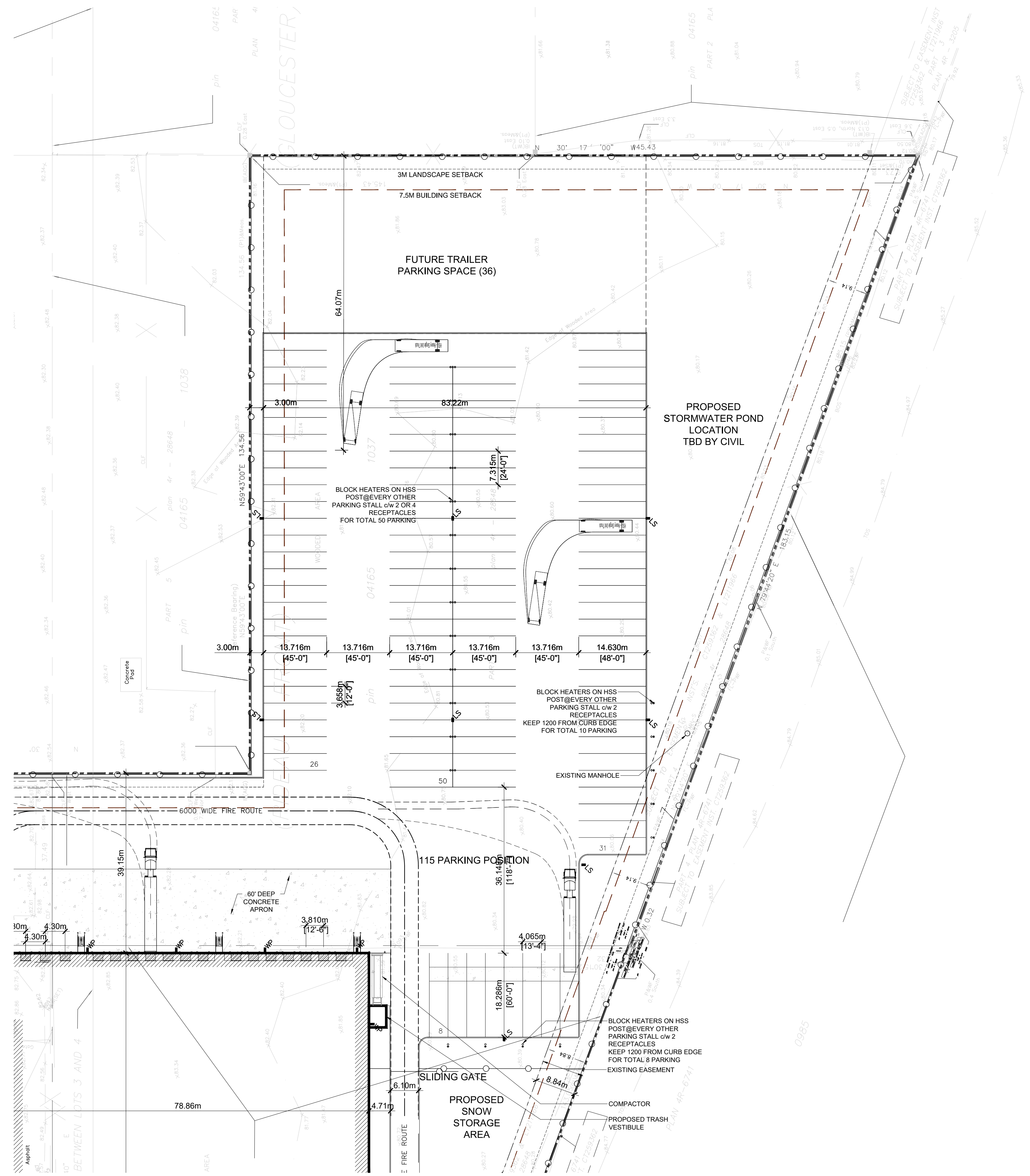


REV	DATE	DESCRIPTION
01	AUG 30, 2016	ISSUED FOR REVIEW
02	SEPT 11, 2016	ISSUED FOR SITE PLAN APPROVAL

LEGEND			
+ 00.00	EXISTING SPOT ELEVATION		NEW LIGHT POLE
+ 00.00	NEW SPOT ELEVATION		NEW WALL MOUNTED LIGHT
	EXISTING TREE		EXISTING MANHOLE
	SIAMESE CONNECTION (WALL MOUNTED)		EXISTING CITY HYDRANT
	PAINTED LINES TYP.		EXISTING LIGHT STANDARD
	BARRIER FREE RAMP C/W WITH CURB DEPRESSION IN COMPLIANCE WITH OBC 3.8.3.2 REFER TO SITE DETAIL		EXISTING CATCH BASIN
	CURB DEPRESSION (CD)		MANHOLE
	PROPERTY LINE		CITY HYDRANT
	REQUIRED ROAD WIDENING SETBACK		LIGHT STANDARD
	EXISTING CHAIN LINK FENCE		CATCH BASIN
	NEW CHAIN LINK FENCE		DOUBLE CATCH BASIN
			HANDICAP PARKING SIGN
			CONCRETE PAVING
			PARKING COUNT
			PRINCIPAL ENTRANCE
			GAS METER



Glenn Piotrowski Architect



CLIENT  
**BBS**  
 BUILDING A REPUTATION ON EXCELLENCE  
 BBS CONSTRUCTION (ONTARIO) LTD.  
 1800 WOODWARD DRIVE,  
 OTTAWA, ON K2C 0P9 CANADA  
 TEL: 613-226-8830 FAX: 613-226-7709

PROJECT  
**SYSCO TANNIS**  
 FACILITY EXPANSION & SITE PLAN  
 MODIFICATIONS

2390 STEVENAGE DRIVE, OTTAWA,  
 ON K1G 3W3

SHEET TITLE  
**PARTIAL SITE PLAN**

DRAWN BY \_\_\_\_\_ PY  
 DATE \_\_\_\_\_  
 SCALE \_\_\_\_\_ 1:500  
 PROJECT NO. \_\_\_\_\_  
 SHEET NO. \_\_\_\_\_

1  
 A0.3 PARTIAL SITE PLAN  
 1:500

**A0.3**