

Copyright Reserved

The Contractor shall verify and be responsible for all dimensions. DO NOT scale the drawing - any errors or omissions shall be reported to Stantec without delay.  
The Copyrights to all designs and drawings are the property of Stantec. Reproduction or use for any purpose other than that authorized by Stantec is forbidden.

Legend

- SANITARY DRAINAGE AREA ID#
- INFILTRATION RATE OF 0.28 L/s/ha APPLIED
- SANITARY DRAINAGE AREA ha.
- SANITARY DRAINAGE AREA ID#
- FLOW RATE IN (L/s) BASED ON MOTEL / HOTEL RATES USED FROM APPENDIX 4-A.4 OF THE OSDG, RESIDENTIAL PORTION WITH FULL HOUSEKEEPING FACILITIES @ 22SL/day/tp (ASSUMING DOUBLE OCCUPANCY PER ROOM) AND 12SL/day/tp FOR DINING ROOM.
- NUMBER OF ROOMS (ASSUME DOUBLE OCCUPANCY)
- SANITARY DRAINAGE AREA
- PROPOSED SANITARY SEWER

Revision	By	Appd.	YYMMDD
2	MJS	KJK	18.10.05
1	MJS	KJK	18.05.09
0	MJS	KJK	18.02.08

File Name:	Dwn.	Chkd.	Dsgn.	YYMMDD
160401378-DB	MJS	KJK	MJS	18.01.31

Permit-Seal

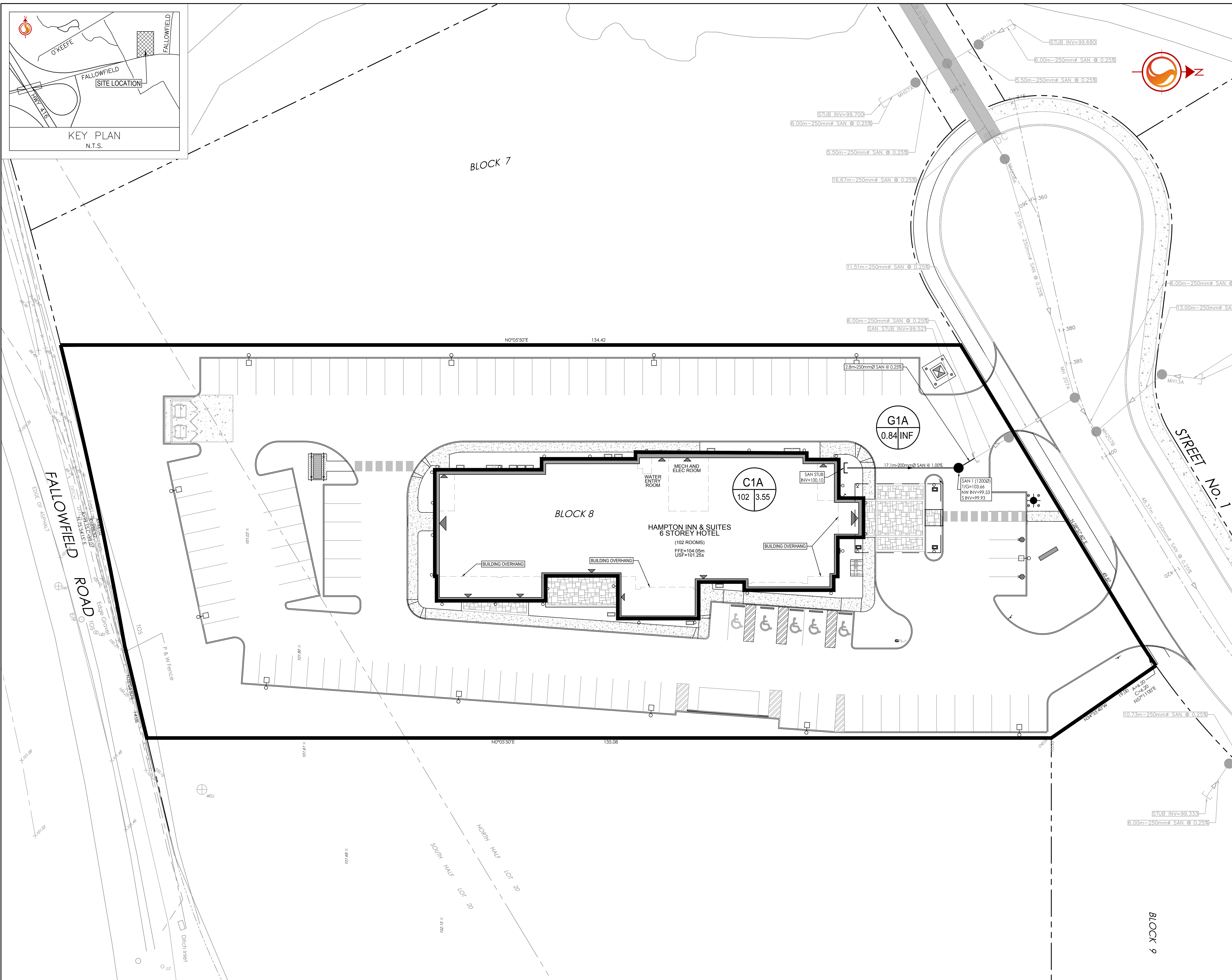
Client/Project  
2441736 ONTARIO INC.

HAMPTON INN AND SUITES  
4401 FALLOWFIELD ROAD  
OTTAWA, ON

Title  
SANITARY DRAINAGE PLAN

Project No. 160401378  
Scale 1:250  
Sheet 6 of 6  
Revision 2

Drawing No. SA-1  
Scale 0 2.5 7.5 12.5m  
Revision 2



V:\01-60401378-4401 Fallowfield Road Design\Drawings\160401378-DB.dwg  
 2018/10/05 12:27 AM By: J.Park, MJS