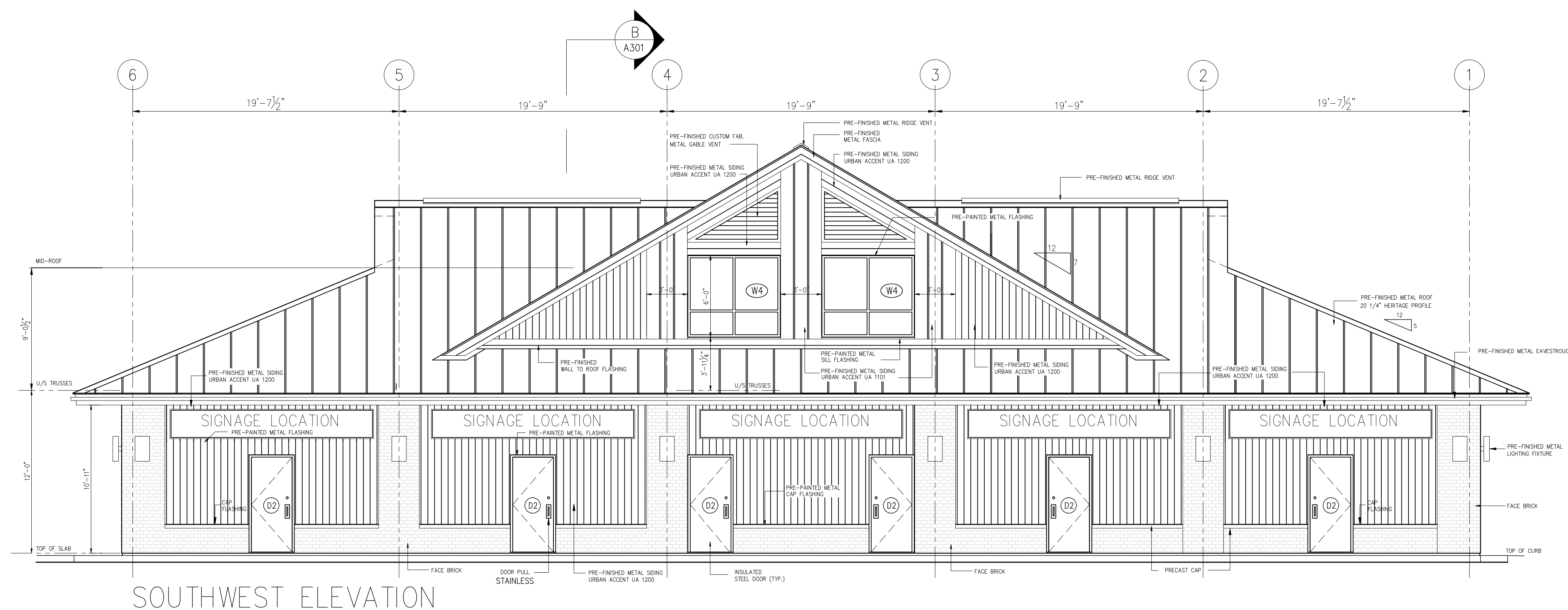


NORTHEAST ELEVATION



SOUTHWEST ELEVATION

ALL WORK TO BE DONE IN ACCORDANCE WITH THE LATEST EDITION OF THE ONTARIO BUILDING CODE.

IT IS THE RESPONSIBILITY OF THE APPROPRIATE CONTRACTOR TO CHECK AND VERIFY ALL DIMENSIONS ON SITE AND TO REPORT ANY ERRORS AND/OR OMISSIONS TO THE DESIGNER AND/OR CONSULTANTS.

CONTRACTORS MUST COMPLY WITH ALL PERTINENT CODES AND BY-LAWS.

CONFIRM LOCATION OF ALL UNDERGROUND SERVICES PRIOR TO EXCAVATION.

DO NOT SCALE DRAWINGS. COPYRIGHT RESERVED.

CONSULTANTS:

O6	REVISED TO 5 RETAIL UNITS WITH CORRECTIONS TO ALL DWGS & SUBMITTED FOR FINAL REVIEW.	OCT 22/18
O5	SUBMITTED FOR M&E P.ENG.	AUG 31/18
O4	RE-SUBMITTED FOR STRUCTURAL	MAR 9/18
O3	REVISED FOR CLIENT REVIEW	JUNE 29/12
O2	REVISED FOR CLIENT REVIEW	APR 24/12
O1	SUBMITTED FOR CLIENT REVIEW	APR 23/12
No.		DATE

PROJECT TITLE:
**RETAIL BUILDING
 BLOCK 63**
**Village Centre Place
 GREELY, ON**

DRAWING TITLE:
**EXTERIOR
 ELEVATIONS**

PROJECT No. :

DATE: APRIL 20, 2012	DWG No: A-201
SCALE: 3/16" = 1'-0"	
DWG BY: GRM	

EXTERIOR FINISHES LEGEND:

METAL ROOF AND RIDGE VENT: IDEAL ROOFING HERITAGE (HF) PROFILE 24GA. 20 1/4" WIDE PANELS COL. MARITIME GREY ID 690

ALUMINUM FASCIA: COL. TO MATCH METAL ROOFING

VENTED ALUMINUM SOFFIT: COL. TO MATCH METAL ROOFING

CUSTOM METAL GABLE VENTS: SIDES VALSPAR WEATHER XL - COL. CHARCOAL ID 8306

CUSTOM METAL GABLE VENTS: FRONT & REAR VALSPAR WEATHER XL - COL. STONE GREY ID 8305

FRONT AND REAR GABLE SIDING & TRIM: IDEAL ROOFING URBAN ACCENT SERIES UA 1200 VALSPAR WEATHER XL - COL. STONE GREY ID 8305 URBAN ACCENT SERIES UA 1101 VALSPAR WEATHER XL - COL. CHARCOAL ID 8306 (REFER TO WALL ELEVATIONS)

PRE-PANDED METAL FLASHING: VALSPAR WEATHER XL - COL. STONE GREY ID 8305

PERIMETER WALL METAL SIDING & TRIM: IDEAL ROOFING URBAN ACCENT SERIES UA 1200 VALSPAR WEATHER XL - COL. STONE GREY ID 8305

PERIMETER WALL ACCENT BRICK: PERMACON MELVILLE SLIK BRICK (UNIT A) 3 3/4" X 3 3/4" X 10 1/2" COL. ROCKLAND BLACK (DARK GREY GROUT)

PRE-PANDED METAL FLASHING: VALSPAR WEATHER XL - COL. STONE GREY ID 8305

PRE-PANDED METAL WALL TO ROOF FLASHING: COL. MARITIME GREY ID 690

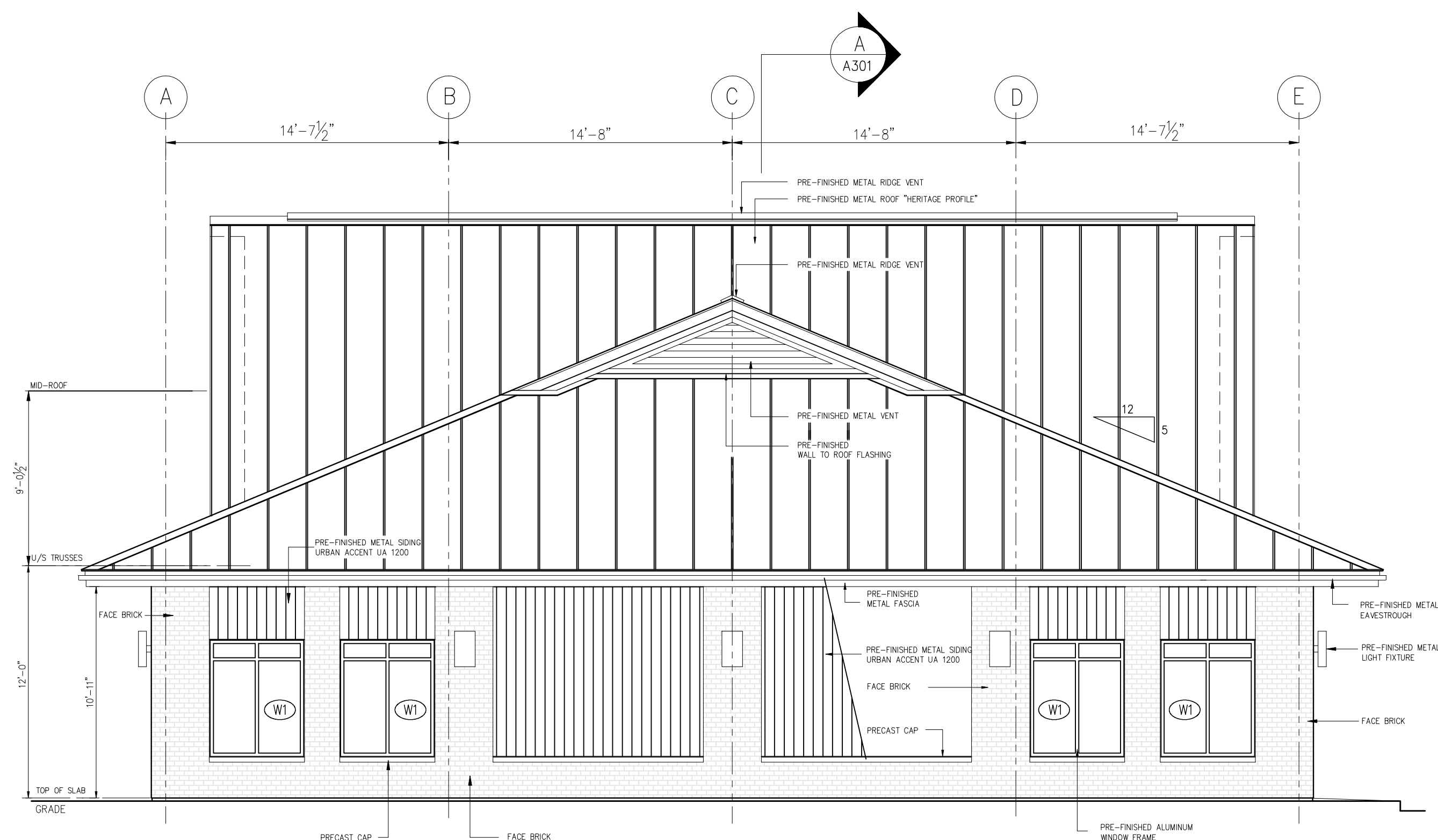
PRECAST CONCRETE WINDOW SILL/BRICK CAP: STANDARD GREY

PRE-PANDED ALUMINUM WINDOWS AND DOORS: COL. BLACK - LOW SHEEN

DOOR HARDWARE: STAINLESS STEEL FINISH

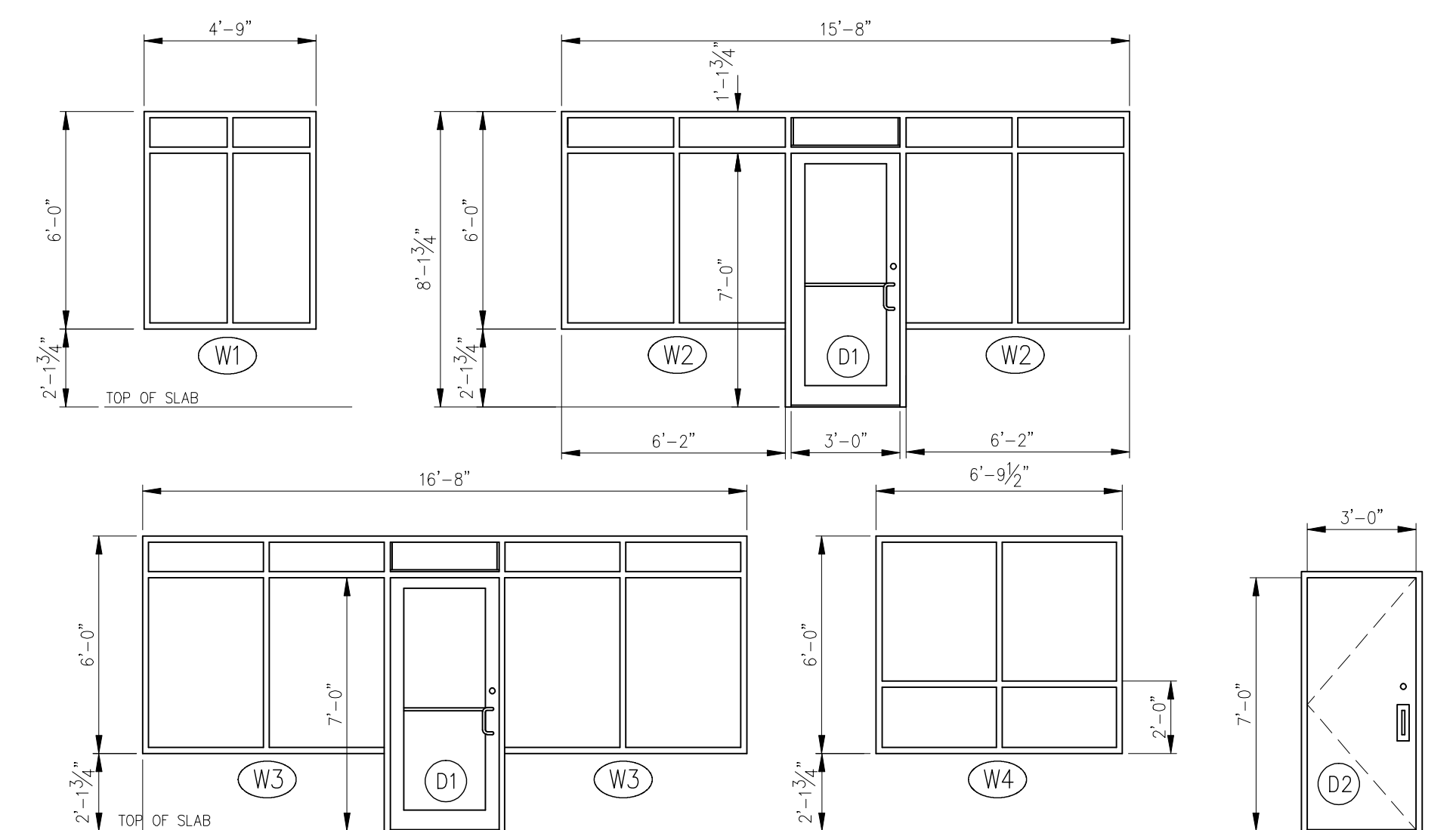
LIGHTING FIXTURES: BLACK - LOW SHEEN FINISH

SIGN BOX FRAME: BLACK - LOW SHEEN FINISH



SOUTHEAST ELEVATION

EXPOSED BUILDING FACE: MINIMUM FIRE RESISTANCE REQUIREMENT 1HR - OBC 9.10.14.5.
AREA OF UNPROTECTED OPENINGS - 16.0%



NORTHWEST ELEVATION

WINDOWS AND DOORS SCHEDULE

N.B. ALL ALUMINUM FRAMES TO BE THERMALLY BROKEN

W1	ANODIZED ALUMINUM FRAME - BLACK LOW SHEEN 4 FIXED PANELS INSULATED GLASS C/W LOW-E, ARGON QUANTITY: 8	W2	ANODIZED ALUMINUM FRAME - BLACK LOW SHEEN 4 FIXED PANELS INSULATED GLASS C/W LOW-E, ARGON QUANTITY: 4
W3	ANODIZED ALUMINUM FRAME - BLACK LOW SHEEN 4 FIXED PANELS INSULATED GLASS C/W LOW-E, ARGON QUANTITY: 6	W4	ANODIZED ALUMINUM FRAME - BLACK LOW SHEEN 4 FIXED PANELS SINGLE GLASS QUANTITY: 4 NOTE: WINDOW LOCATED IN ROOF DORMER GABLE WALL - NON HEATED SPACE ARCHITECTURAL DESIGN FEATURE ONLY
D1	ANODIZED ALUMINUM FRAME - BLACK LOW SHEEN INSULATED TEMPERED GLASS C/W LOW-E, ARGON, WEATHERSTRIPPING, SWEEP, THERMALLY BROKEN ALUMINUM THRESHOLD, DOOR CLOSER - LCN1460 CH2615-1 FINISH 320 STAINLESS PUSH/PULL KEYED CYLINDER EXIT LOCK WITH INTERIOR THUMBTURN QUANTITY: 5	D2	STEEL DOOR & FRAME C/W THERMO BREAK INSULATED TEMPERED GLASS C/W LOW-E, ARGON, WEATHERSTRIPPING, SWEEP, THERMALLY BROKEN ALUMINUM THRESHOLD, DOOR CLOSER - LCN1460 ADAMS RITE 8400 PANIC SET WITH EXTERIOR PULL AND KEYED CYLINDER LOCK - STAINLESS QUANTITY: 6

GENERAL NOTE: ZONE 1 (I-P)
OBC SB-10 DIV. 5 REQUIREMENTS FOR:
VERTICAL FENESTRATION 0%-40% WALL/WINDOW RATIO
MAXIMUM ASSEMBLY U-VALUE = 0.38
MAXIMUM ASSEMBLY SHGC = 0.40
MINIMUM VT/SHGC = 1.10

ENTRANCE DOORS
MAXIMUM ASSEMBLY U-VALUE = 0.69
MAXIMUM ASSEMBLY SHGC = 0.40
MINIMUM THERMAL RESISTANCE OF INSULATED CORE METAL DOORS = R4 OR RSI 0.7

ALL WORK TO BE DONE IN ACCORDANCE WITH THE LATEST EDITION OF THE ONTARIO BUILDING CODE.

IT IS THE RESPONSIBILITY OF THE APPROPRIATE CONTRACTOR TO CHECK AND VERIFY ALL DIMENSIONS ON SITE AND TO REPORT ANY ERRORS AND/OR OMISSIONS TO THE DESIGNER AND/OR CONSULTANTS.

CONTRACTORS MUST COMPLY WITH ALL PERTINENT CODES AND BY-LAWS.

CONFIRM LOCATION OF ALL UNDERGROUND SERVICES PRIOR TO EXCAVATION.

DO NOT SCALE DRAWINGS. COPYRIGHT RESERVED.

CONSULTANTS:

No.	DESCRIPTION	DATE
O7	REVISED TO 5 RETAIL UNITS WITH CORRECTIONS TO ALL DWGS & SUBMITTED FOR FINAL REVIEW.	OCT 22/18
O6	SUBMITTED FOR M&E P.ENG.	AUG 31/18
O5	RE-SUBMITTED FOR STRUCTURAL	MAR 9/18
O4	SUBMITTED FOR ENGINEERING	SEPT 16/13
O3	REVISED FOR CLIENT REVIEW	JUNE 29/12
O2	REVISED FOR CLIENT REVIEW	APR 24/12
O1	SUBMITTED FOR CLIENT REVIEW	APR 23/12

PROJECT TITLE:

**RETAIL BUILDING
BLOCK 63
Village Centre Place
GREELY, ON**

DRAWING TITLE:

**EXTERIOR
ELEVATIONS
WINDOWS/DOORS
SCHEDULE**

PROJECT No. :

DATE:
APRIL 20, 2012

SCALE:
3/16" = 1' - 0"

DWG BY:
GRM

DWG No.:

A-202