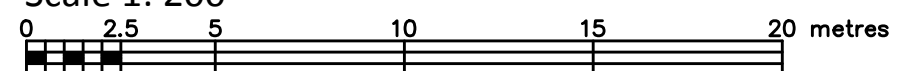


SKETCH SHOWING TOPOGRAPHIC INFORMATION OF

YOUNG STREET AND CHAMPAGNE AVENUE

FARLEY, SMITH & DENIS SURVEYING LTD. 2018

Scale 1: 200



Metric Note

Distances and coordinates on this plan are in metres and can be converted to feet by dividing by 0.3048.

Elevation Notes

- Elevations shown are geodetic.
- It is the responsibility of the user of this information to verify that the job benchmark has not been altered or disturbed and that its relative elevation and description agrees with the information shown on this drawing.

Utility Notes

- This drawing cannot be accepted as acknowledging all of the utilities and it will be the responsibility of the user to contact the respective utility authorities for confirmation.
- Only visible surface utilities were located.
- Underground utility data derived from City of Ottawa utility sheet reference: F-09-06, F-09-07, Plan 6563, A389-6 & 2684.
- Sanitary and storm sewer grades and inverts were derived from: Field measurement.
- A field location of underground plant by the pertinent utility authority is mandatory before any work involving breaking ground, probing, excavating etc.

LEGEND

- CB CATCH BASIN
- FH FIRE HYDRANT
- WV WATER VALVE
- WSOV WATER SHUT OFF VALVE
- GM GAS METER
- UP UTILITY POLE
- D/H OVERHEAD WIRES
- loc DEPRESSED CURB
- toc TOP OF CURB ELEVATION
- tw BOTTOM OF WALL ELEVATION
- T/W TOP OF WALL ELEVATION
- Inv INVERT ELEVATION
- Inv(City) INVERT ELEVATION PER CITY OF OTTAWA PLANS
- CONC CONCRETE
- Ø DIAMETER
- T/FDN TOP OF FOUNDATION ELEVATION
- C/L CENTRELINE
- M+ST MAINTENANCE HOLE (STORM)
- M+S MAINTENANCE HOLE (SANITARY)
- M+H MAINTENANCE HOLE (COMBINATION)
- ST UNDERGROUND STORM SEWER
- S UNDERGROUND SANITARY SEWER
- W UNDERGROUND WATER
- G UNDERGROUND GAS
- DECIDUOUS TREE
- CONIFEROUS TREE
- SHRUB

Note:

This sketch was compiled from Farley, Smith and Denise Surveying Ltd. office records, FSD file #340-14, City Utility Drawings, and field data obtained September 10th, 2018.

Fieldwork Completion Dated: 10th day of September, 2018.

Geographic Location:

LOT 6 IN BLOCK E  
(WEST CHAMPAGNE AVENUE)  
REGISTERED PLAN 146  
CITY OF OTTAWA

CAUTION THIS IS NOT A PLAN OF SURVEY AND SHALL NOT BE USED EXCEPT FOR THE PURPOSE INDICATED IN THE TITLE BLOCK.

WARNING NO PERSON MAY COPY, REPRODUCE, DISTRIBUTE OR ALTER THIS PLAN IN WHOLE OR IN PART WITHOUT THE WRITTEN PERMISSION OF FARLEY, SMITH & DENIS SURVEYING LTD. © FARLEY, SMITH & DENIS SURVEYING LTD., 2018.

FARLEY, SMITH & DENIS SURVEYING LTD.

ONTARIO LAND SURVEYORS  
CANADA LAND SURVEYORS

190 COLONNADE ROAD, OTTAWA, ONTARIO K2E 7J5  
TEL: (613) 727-8226 FAX: (613) 727-1826