

DOUGLAS JAMES, MCIP, RPP
MANAGER, DEVELOPMENT REVIEW - CENTRAL
PLANNING, INFRASTRUCTURE & ECONOMIC
DEVELOPMENT DEPARTMENT, CITY OF OTTAWA

APPROVED
 By Douglas James at 12:53 pm, Sep 27, 2018

client
559 Riverdale Ave Inc.
 34 Glencairn Avenue 1 (613) 923 3483
 Ottawa ON K1S 1M6 luca_dia@yahoo.com

architecture
est ARCHITECTURE
 2275 Robin Ave 1 (438) 396-2200
 Dorval QC H9S 1G9 www.estarchitecture.ca
 ONTARIO ASSOCIATION OF ARCHITECTS
 FELIX TUE LICENCE 7879

engineering
Arch-Nova Design Inc.
 45 Banner Road 1 (613) 829 5722
 Nepean ON K2H 8X5 www.archnova.ca

landscaping
John Szczepaniak, Landscape Architect
 P.O. Box 4207, Station E 1 (613) 731 2777
 Ottawa ON K1S 5B2 www.jszla.com

revisions
 0 2016/04/11 Site Plan Control
 1 2016/10/20 Site Plan Control REV.1

project
Apartment Building
 559 Riverdale Ave
 Ottawa ON K1S 1S3

reference
14-10

title
South elevation

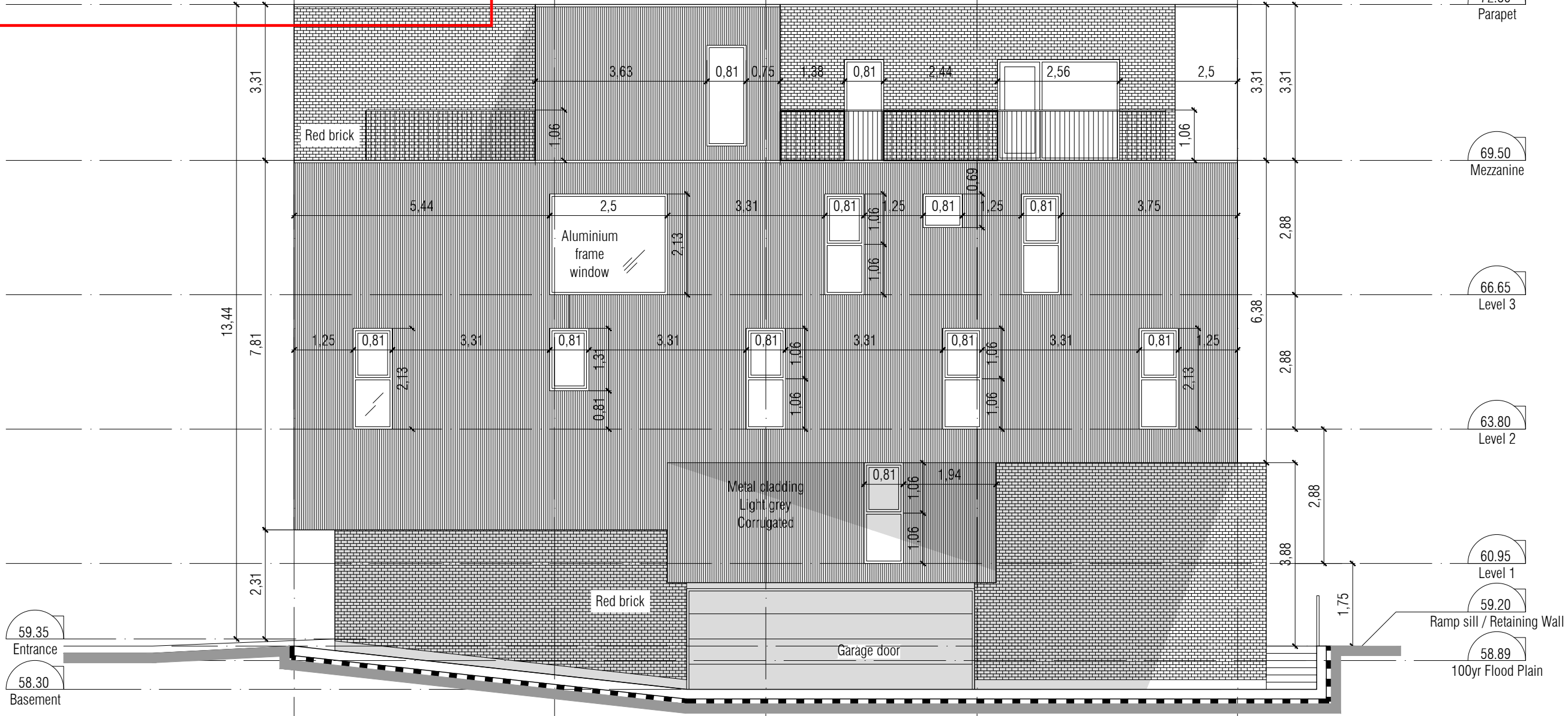
scale
1:100

issued for
Site Plan Control

date
2018/07/01

sheet
A26

revision
1



--- DRYPROOFING MEMBRANE