

APPROVED
By Douglas James at 12:46 pm, Sep 27, 2018

client
559 Riverdale Ave Inc.
34 Glencairn Avenue 1 (613) 923 3483
Ottawa ON K1S 1M6 luca_dia@yahoo.com

architecture
est ARCHITECTURE
2275 Robin Ave 1 (438) 396-2200
Dorval QC H9S 1G9 www.estarchitecture.ca



engineering
Arch-Nova Design Inc.
45 Banner Road 1 (613) 829 5722
Nepean ON K2H 8X5 www.archnova.ca

landscaping
John Szczepaniak, Landscape Architect
P.O. Box 4207, Station E 1 (613) 731 2777
Ottawa ON K1S 5B2 www.jszla.com

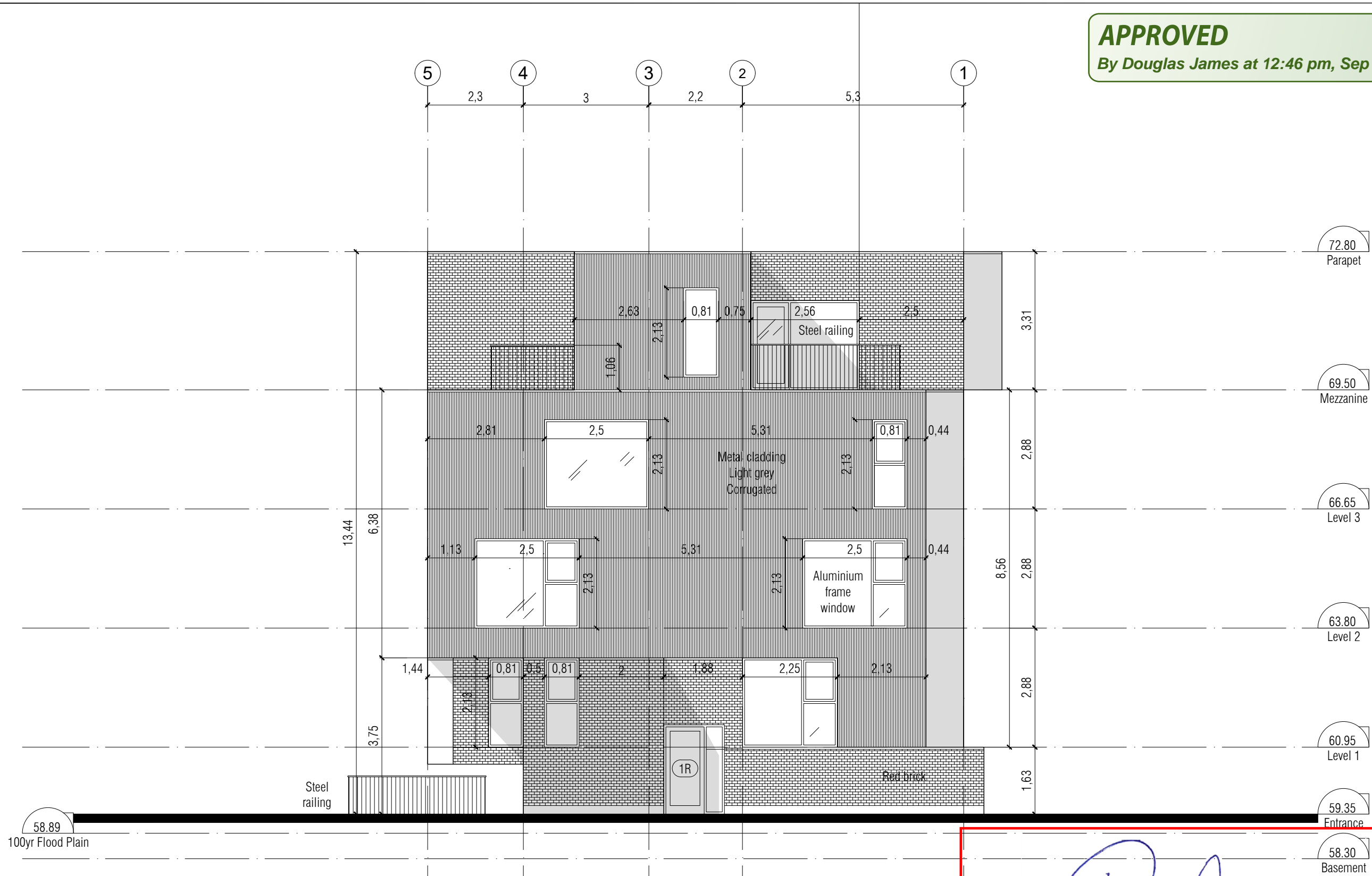
revisions
0 2016/04/11 Site Plan Control
1 2016/10/20 Site Plan Control REV.1

project
Apartment Building
559 Riverdale Ave
Ottawa ON K1S 1S3

reference
14-10

title
East elevation

scale
1:100
issued for
Site Plan Control
date
2018/07/01
sheet **A27** revision **1**



DOUGLAS JAMES, MCIP, RPP
MANAGER, DEVELOPMENT REVIEW - CENTRAL
PLANNING, INFRASTRUCTURE & ECONOMIC
DEVELOPMENT DEPARTMENT, CITY OF OTTAWA

#17642