

Copyright Reserved

The Contractor shall verify and be responsible for all dimensions, DO NOT scale the drawing - any errors or omissions shall be reported to Stantec without delay.
The Copyrights to all designs and drawings are the property of Stantec. Reproduction or use for any purpose other than that authorized by Stantec is forbidden.

Legend

- PROPOSED DECIDUOUS TREE
- PROPOSED CONIFEROUS TREES
- PROPOSED DECIDUOUS SHRUBS
- PROPOSED PLANTING BED
- PROPOSED PERENNIALS
- PLANT SPECIES/QUANTITY KEY
- T/SOD TOPSOIL AND SOD
- T/SEED TOPSOIL AND SEED
- PROPOSED TEMPORARY TREE PROTECTION FENCE
- PROPOSED RETAINING WALL WITH HANDRAIL
- PROPOSED CONCRETE WALKWAY
- PROPOSED PREWASHED STONES
- PROPERTY LINE

APPROVED

By Adam Brown at 9:48 am, Oct 11, 2018

Adam Brown

ADAM BROWN
MANAGER, DEVELOPMENT REVIEW - RURAL
PLANNING, INFRASTRUCTURE & ECONOMIC
DEVELOPMENT DEPARTMENT, CITY OF OTTAWA

2	REVISED AS PER COMMENTS	MS	JM	18.08.14	
1	REVISED AS PER COMMENTS	AMO	ILL	18.02.06	
0	ISSUED FOR SITE PLAN APPROVAL	AMO	ILL	17.09.07	
Revision		By	App'd.	YY.MM.DD	
File Name: 160401305-LA.dwg		MS/AMO	ILL	17.09.01	
		Dwn.	Chkd.	Dsgn.	YY.MM.DD

Permit-Seal



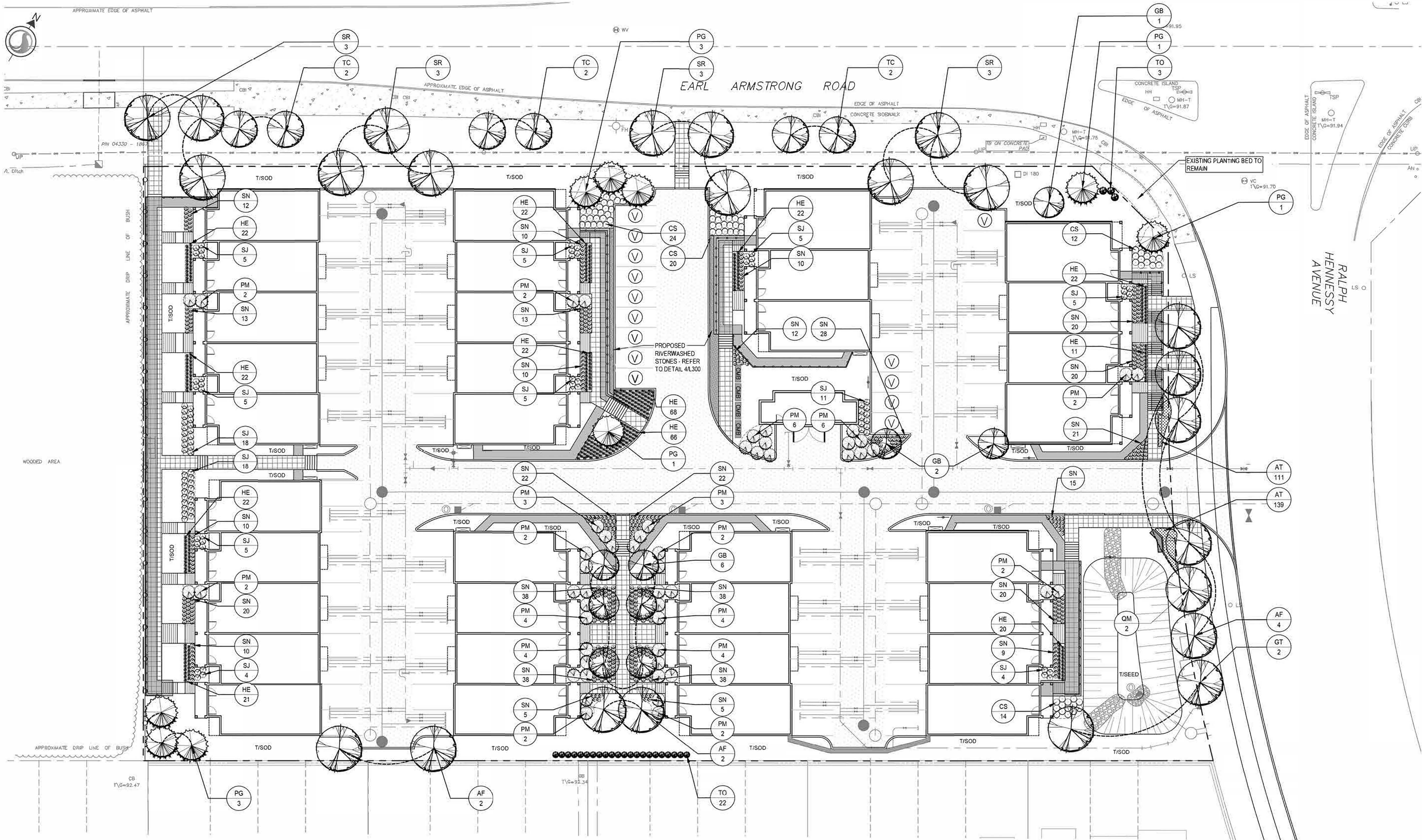
Client/Project
URBANDALE CORPORATION

**RIVERSIDE SOUTH PHASE 8
BLOCK 211
OTTAWA, ON**

Title
LANDSCAPE PLAN

Project No. 160401305 Scale 1:250 0 2.5 7.5 12.5m

Drawing No. L200 Sheet 1 of 2 Revision 2



PLANT MATERIAL LIST

SYM	QTY	BOTANICAL NAME	COMMON NAME	SIZE	REMARKS
DECIDUOUS TREES - REFER TO DETAIL 2/L300					
AF	8	<i>Acer x freemanii</i> 'Jeffersred'	Autumn Blaze Maple	60mm cal.	W.B.
GB	9	<i>Ginkgo biloba</i> 'Princeton Sentry'	Princeton Sentry Maidenhair Tree	50mm cal.	W.B.
GT	2	<i>Gleditsia triacanthos</i> var. <i>inermis</i> 'Shademaster'	Shademaster Honeylocust	60mm cal.	W.B.
SR	12	<i>Syringa reticulata</i> 'Ivory Silk'	Tree Lilac	60mm cal.	W.B.
QM	2	<i>Quercus macrocarpa</i> 'Urban Pinnacle'	Urban Pinnacle Oak	60mm cal.	W.B.
TC	6	<i>Tilia cordata</i> 'Summer Sprite'	Summer Sprite Linden	45mm cal.	W.B.
CONIFEROUS TREES - REFER TO DETAIL 2/L300					
PG	9	<i>Picea glauca</i>	White Spruce	200cm ht.	W.B.
TO	39	<i>Thuja occidentalis</i> 'Emerald'	Emerald Cedar	200cm ht.	W.B., Plant at 800mm o/c

PLANT MATERIAL LIST

SYM	QTY	BOTANICAL NAME	COMMON NAME	SIZE	REMARKS
DECIDUOUS SHRUBS - REFER TO DETAIL 3/L300					
CS	70	<i>Cornus sericea</i> 'Farrow'	Arctic Fire Dogwood	50 cm ht.	Potted; plant at 800mm o/c
SN	459	<i>Spiraea japonica</i> 'Nana'	Alpine Spirea	40 cm ht.	Potted; Plant at 500mm o/c
SJ	90	<i>Spiraea japonica</i> 'Flaming Mound'	Flaming Mound Spiraea	40 cm ht.	Potted; Plant at 800mm o/c
CONIFEROUS SHRUBS - REFER TO DETAIL 3/L300					
PM	50	<i>Pinus mugo</i> var. 'Pumilio'	Drawl Mountain Pine	40 cm ht.	Potted; Plant at 1800mm o/c
PERENNIALS - REFER TO DETAIL 3/L300					
AT	250	<i>Achillea tomentosa</i> 'Aurea'	Aurea Yarrow	1 gal.	Potted; Plant at 250mm o/c
HE	340	<i>Heimericallis</i> 'Ruby Stella'	Ruby Stella Daylily	1 gal.	Potted; Plant at 450mm o/c

LANDSCAPE NOTES

- EXISTING VEGETATED AREAS ON ADJACENT PROPERTIES SHALL REMAIN AND BE PROTECTED BEFORE, DURING, AND AFTER CONSTRUCTION.
- REFER TO "LOT GRADING, DRAINAGE, SEDIMENT & EROSION CONTROL PLAN" FOR PROPOSED GRADING.
- REFER TO "SITE SERVICING & UTILITY PLAN" FOR LOCATION AND DETAILS OF PROPOSED UNDERGROUND SERVICES.
- SOD SHALL BE KENTUCKY BLUEGRASS SOD INSTALLED OVER 135mm OF TOPSOIL. SOD SHALL BE INSTALLED THROUGHOUT WITHIN LIMIT OF WORK AND IN ALL DISTURBED AREAS OUTSIDE THE LIMIT OF WORK EXCEPT WHERE INDICATED. SOD SHALL BE INSTALLED AS PER OPSS 803.
- SEED MIXTURE SHALL BE A LOW MAINTENANCE LAWN MIXTURE #104 BY OSC SEEDS OR APPROVED EQUIVALENT. SEEDING SHALL BE INSTALLED MECHANICALLY WITH MULCH OVER 150mm OF TOPSOIL. SEE SHALL BE INSTALLED AS PER OPSS 804.
- CONTRACTOR TO LOCATE AND STAKE ALL UTILITIES PRIOR TO ANY WORK ON THE SITE. DO NOT PLANT DIRECTLY ABOVE UNDERGROUND UTILITIES. REPORT ANY DISCREPANCIES TO THE LANDSCAPE ARCHITECT FOR DIRECTION.
- MAINTAIN A MINIMUM DISTANCE OF 2.0m FROM ALL UNDERGROUND UTILITIES.
- MAINTAIN A MINIMUM DISTANCE OF 1.5m FROM BACK OF ROADWAY SIDEWALK.
- NO TREES SHALL BE PLANTED UNDER OVERHEAD WIRES.
- THE LANDSCAPE ARCHITECT MAY ADJUST THE LOCATION OF TREES PRIOR TO PLANTING TO MINIMIZE CONFLICTS WITH UTILITIES, DRIVEWAYS AND INTERSECTION VISIBILITY.
- CONTRACTOR SHALL SUPPLY ALL MATERIALS IN QUANTITIES SUFFICIENT TO COMPLETE WORK SHOWN ON THESE DRAWINGS. ANY DISCREPANCIES SHALL BE REPORTED TO THE LANDSCAPE ARCHITECT FOR DIRECTION.
- DO NOT MAKE SUBSTITUTIONS OF MATERIALS, PRODUCTS OR QUANTITIES WITHOUT PRIOR WRITTEN PERMISSION OF THE LANDSCAPE ARCHITECT.
- THE CONTRACTOR TO MAKE GOOD TO THE SATISFACTION OF THE LANDSCAPE ARCHITECT ANY AREAS DAMAGED BY THE WORK.
- UPON THE COMPLETION OF WORK EACH DAY, REMOVE ALL DEBRIS, GARBAGE AND SURPLUS MATERIALS FROM THE SITE. KEEP THE SITE CLEAN AND USEABLE AT ALL TIMES.
- ALL WORKMANSHIP AND MATERIALS (INCLUDING PLANTS) TO BE GUARANTEED FOR ONE FULL YEAR FOLLOWING FINAL ACCEPTANCE OF THE PROJECT.
- THE CONTRACTOR SHALL REMOVE ALL T-BAR AND WOODEN TREE STAKES PRIOR TO ASSUMPTION BY THE OWNER.
- AT THE TIME OF INSPECTION FOR ACCEPTANCE ALL TREE PITS SHALL BE CULTIVATED, FREE OF WEEDS, LEAVES, BROKEN BRANCHES AND DEBRIS.