

Copyright Reserved

The Contractor shall verify and be responsible for all dimensions. DO NOT scale the drawing - any errors or omissions shall be reported to Stantec without delay. The Copyrights to all designs and drawings are the property of Stantec. Reproduction or use for any purpose other than that authorized by Stantec is forbidden.

Legend

- PROPOSED WELL LOCATION
- PROPOSED BOLLARDS
- CONCRETE PAD
- ASPHALT AREA
- BUILDING ENTRANCE
- RIVERSTONE
- EXISTING VEGETATION
- TEMPORARY TREE PROTECTION FENCE REFER TO DETAIL 2/L200
- EXISTING TREE TO BE REMOVED
- EXISTING VEGETATION TO BE REMOVED
- PROPOSED DECIDUOUS TREES
- PROPOSED CONIFEROUS TREES
- PROPOSED SHRUB
- PROPOSED PLANTING BED

Notes

APPROVED REFUSED

THIS DAY OF _____, 20__

ADAM BROWN, MANAGER
DEVELOPMENT REVIEW RURAL
PLANNING, INFRASTRUCTURE AND ECONOMIC
DEVELOPMENT DEPARTMENT, CITY OF OTTAWA

1	ISSUED FOR CITY APPROVAL	LZ	LL	18.09.19
Revision		By	Appd.	YYYY.MM.DD

File Name:	160410099-DB	JP	18.06.05
		Dwn.	Chkd.
		Dsgn.	YY.MM.DD

Permit-Seal

Client/Project
THOMAS CAVANAGH CONSTRUCTION LIMITED
9094 CAVANAGH ROAD
2596 CARP ROAD
CONCRETE BATCHING PLANT
OTTAWA, ONTARIO

Title
LANDSCAPE DETAILS

Project No.	Scale
160410099	VARIES
Drawing No.	Sheet
	2 of 2
Revision	
	1

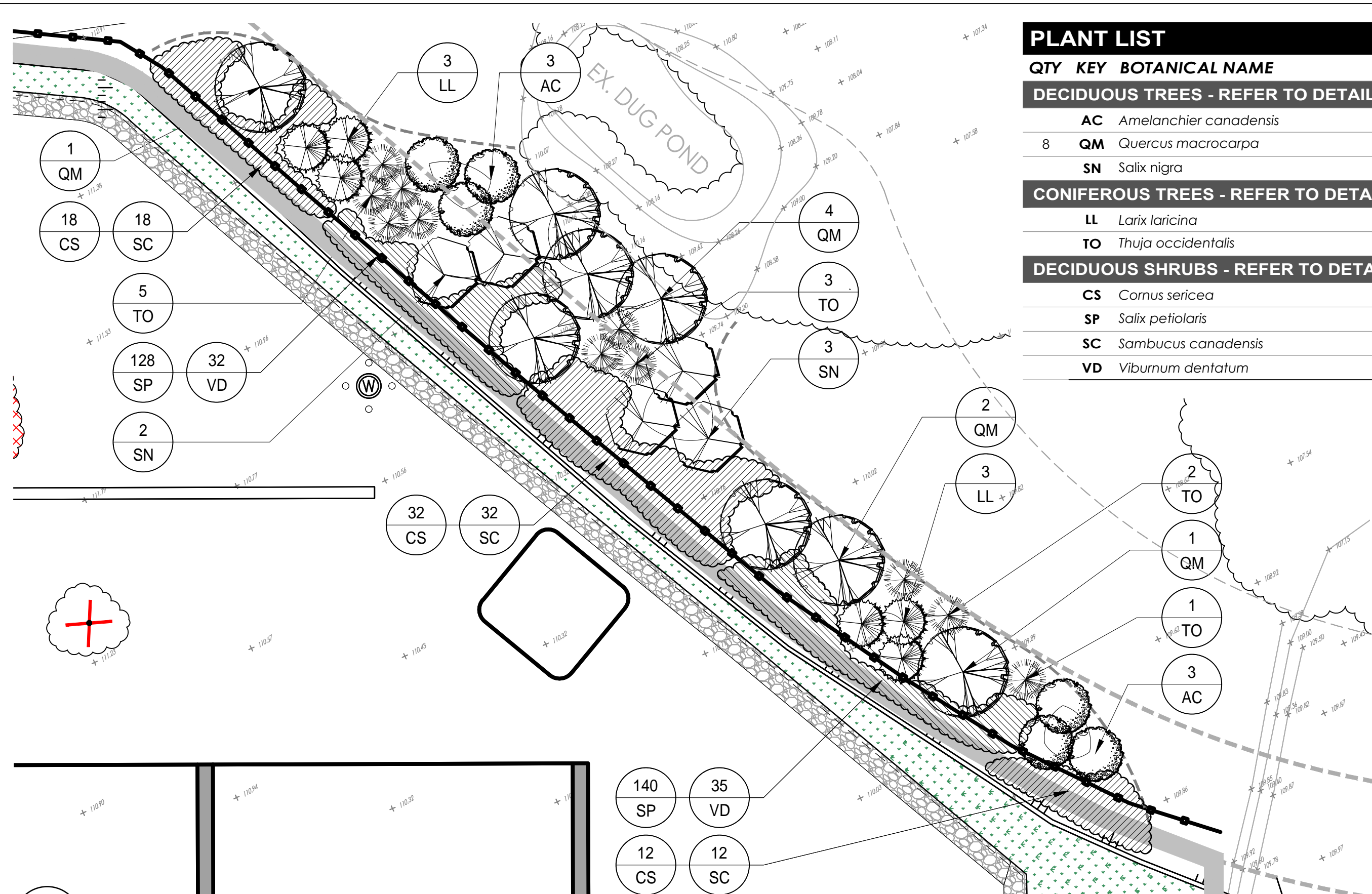
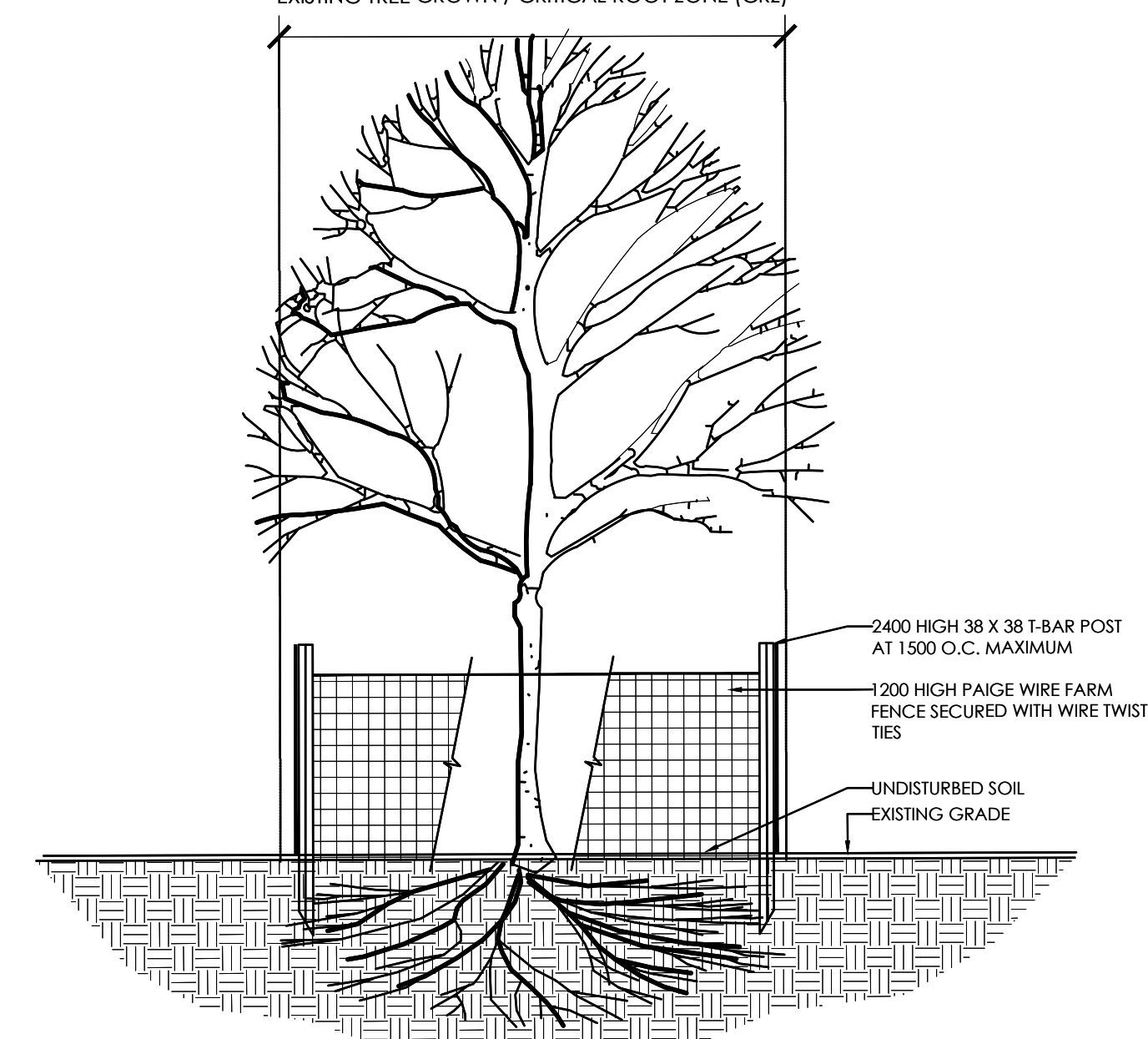
PLANT LIST					
QTY	KEY	BOTANICAL NAME	COMMON NAME	SIZE	REMARKS
DECIDUOUS TREES - REFER TO DETAIL 3/L200					
	AC	<i>Amelanchier canadensis</i>	Serviceberry	2000 mm (ht.)	W.B.: Clum Form: Plant @ 5000 mm o/c
8	QM	<i>Quercus macrocarpa</i>	Bur Oak	60 mm (cal.)	W.B.: Plant at 8,000 mm o/c
	SN	<i>Salix nigra</i>	Black Willow	60 mm (cal.)	W.B.: Plant at 8,000 mm o/c
CONIFEROUS TREES - REFER TO DETAIL 4/L200					
	LL	<i>Larix laricina</i>	Tamarack	2000 mm (ht.)	W.B.: Plant at 5000 mm o/c
	TO	<i>Thuja occidentalis</i>	Eastern White Cedar	2000 mm (ht.)	W.B.: Plant at 4000 mm o/c
DECIDUOUS SHRUBS - REFER TO DETAIL 5/L200					
	CS	<i>Cornus sericea</i>	Red Osier Dogwood	500 mm (ht.)	C.G.: Plant at 2500 mm o/c
	SP	<i>Salix petiolaris</i>	Slender Willow	500 mm (ht.)	C.G.: Plant at 1000 mm o/c
	SC	<i>Sambucus canadensis</i>	Common Elderberry	500 mm (ht.)	C.G.: Plant at 2500 mm o/c
	VD	<i>Viburnum dentatum</i>	Arowwood Viburnum	500 mm (ht.)	C.G.: Plant at 2000 mm o/c

PLANTING NOTES

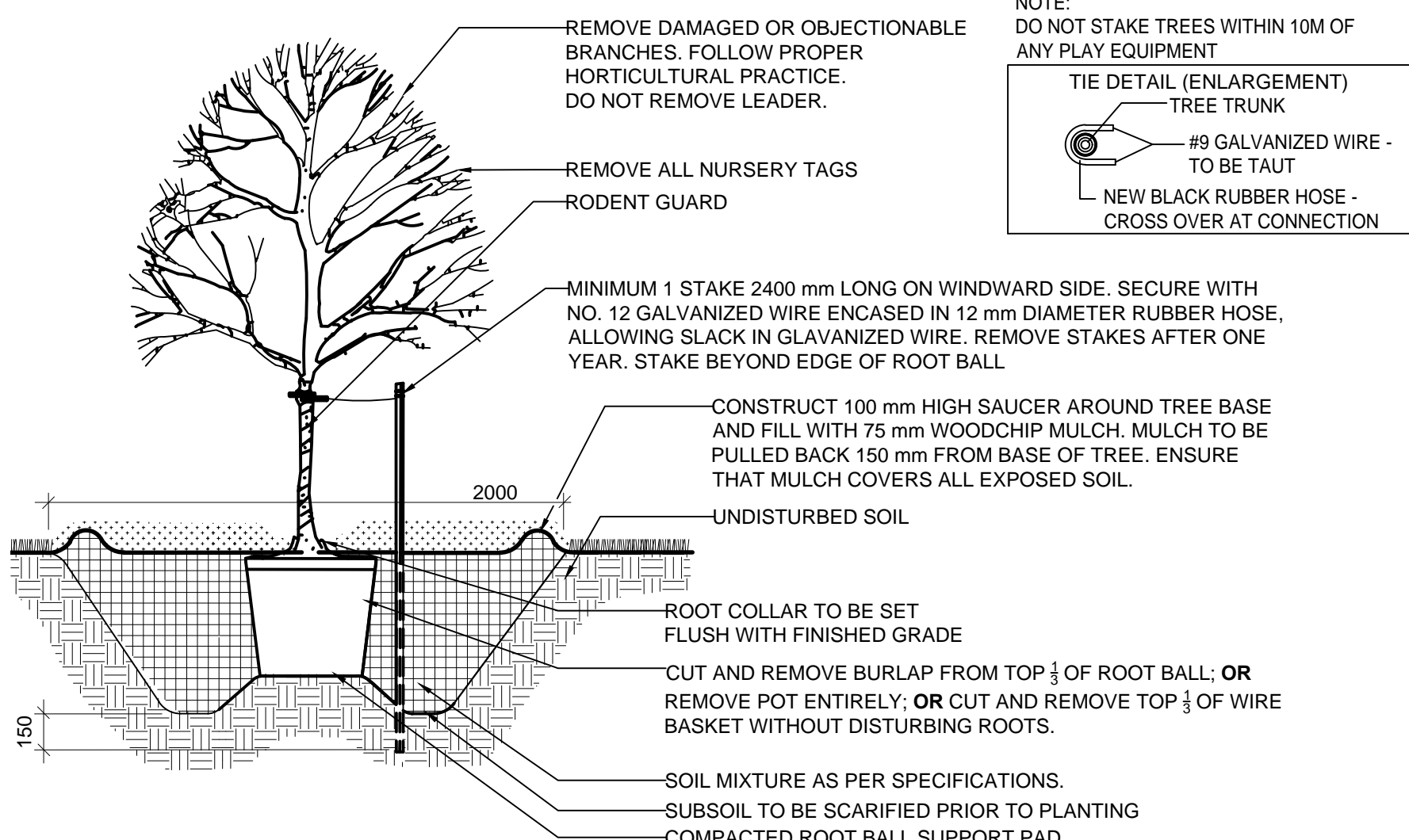
- THE DETAILS ON THIS SHEET DO NOT REPRESENT ANY PARTICULAR SPECIES.
- TREES AND SHRUBS AS INDICATED IN THE DETAILS REPRESENT BOTH CONIFEROUS AND DECIDUOUS SPECIES.
- MATERIAL PLANTED IN GROUP SHALL BE SET IN CONTINUOUS PLANTING BEDS.
- CENTRE LINE OF SHRUBS SHALL NOT BE CLOSER THAN 2.4m FROM BUILDING FACE TO PROTECT BUILDING FOOTINGS AND INSULATION.
- PRUNING - TO SUIT SPECIES - PRUNE BRANCHES BY 1/3 TO REMOVE DAMAGED OR OBJECTIONABLE BRANCHES FOLLOWING PROPER HORTICULTURAL PRACTICE. DO NOT PRUNE LEADERS.
- FIRMLY COMPACT BACKFILLED PLANTING MIXTURE TO ELIMINATE AIR POCKETS OR PREVENT SETTLEMENT.
- PLANTING MATERIAL QUALITY STANDARDS:
 - ALL PLANT MATERIALS TO CONFORM TO THE CANADIAN NURSERY LANDSCAPE ASSOCIATION FOR VARIETY, SIZE AND CONDITION.
 - PLANT MATERIAL COLLECTED FROM WILD SOURCES WILL NOT BE ACCEPTED.
 - LANDSCAPE ARCHITECT RESERVES THE RIGHT TO REFUSE ACCEPTANCE OF ANY PLANT DISPLAYING POOR GROWTH HABITS, INJURY OR DISEASE.
 - ANY PLANTS THAT DO NOT CONFORM TO THE ABOVE STANDARDS WILL BE PROMPTLY REMOVED FROM THE SITE BY THE CONTRACTOR AND REPLACED WITH MATERIAL OF ACCEPTABLE QUALITY AT NO ADDITIONAL COST TO THE PROJECT.

- NOTES:
- GROUPS OF TREES TO BE PROTECTED SHALL BE TREATED IN A LIKE MANNER WITH FENCING AROUND THE ENTIRE STAND(S).
 - PRUNE BRANCHES TO REMOVE DAMAGED OR OBJECTIONABLE BRANCHES. DO NOT PRUNE LEADERS.
 - TREE PROTECTION SHALL REMAIN UNTIL SUBSTANTIAL PERFORMANCE OF THE PROJECT.

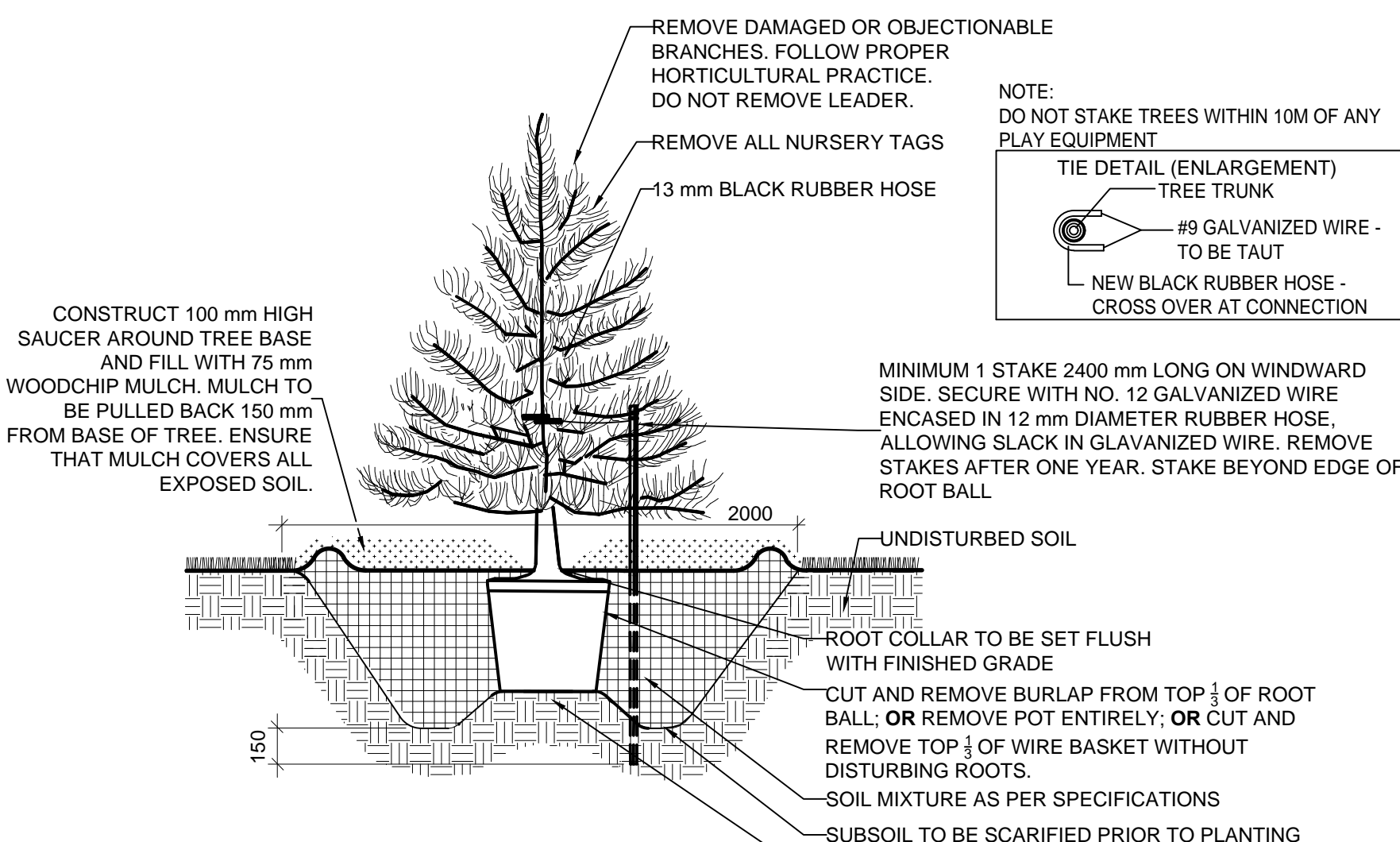
2 TEMPORARY TREE PROTECTION FENCE
N.T.S.



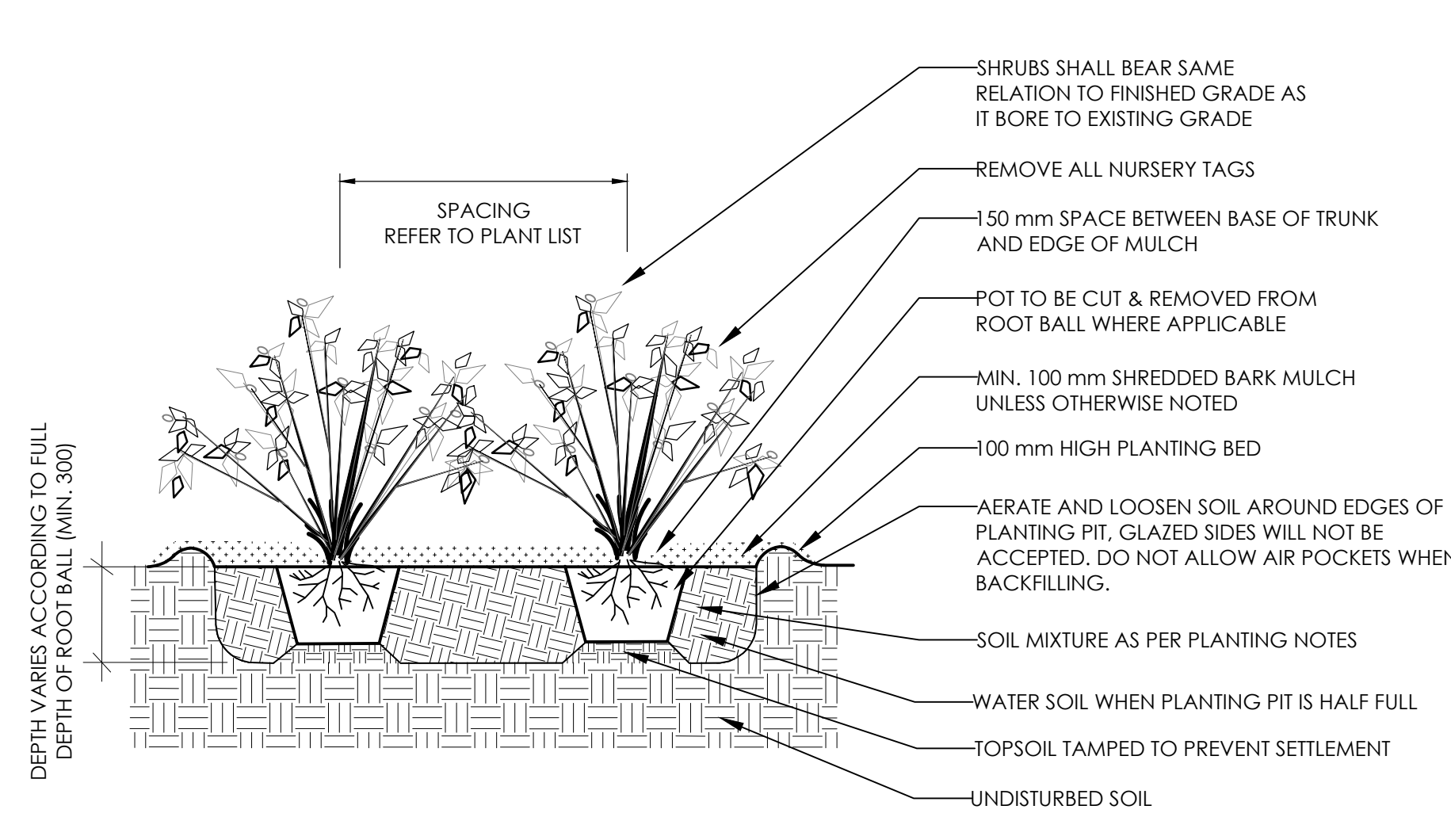
1 PLANTING BED 'A'
1:500



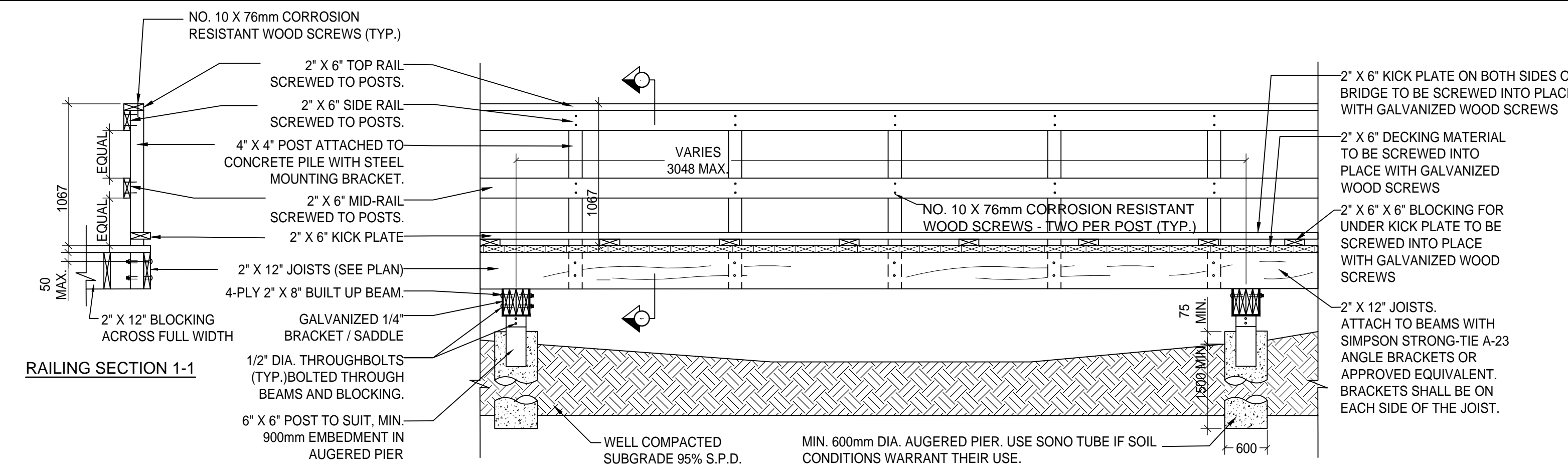
3 DECIDUOUS TREE PLANTING DETAIL
N.T.S.



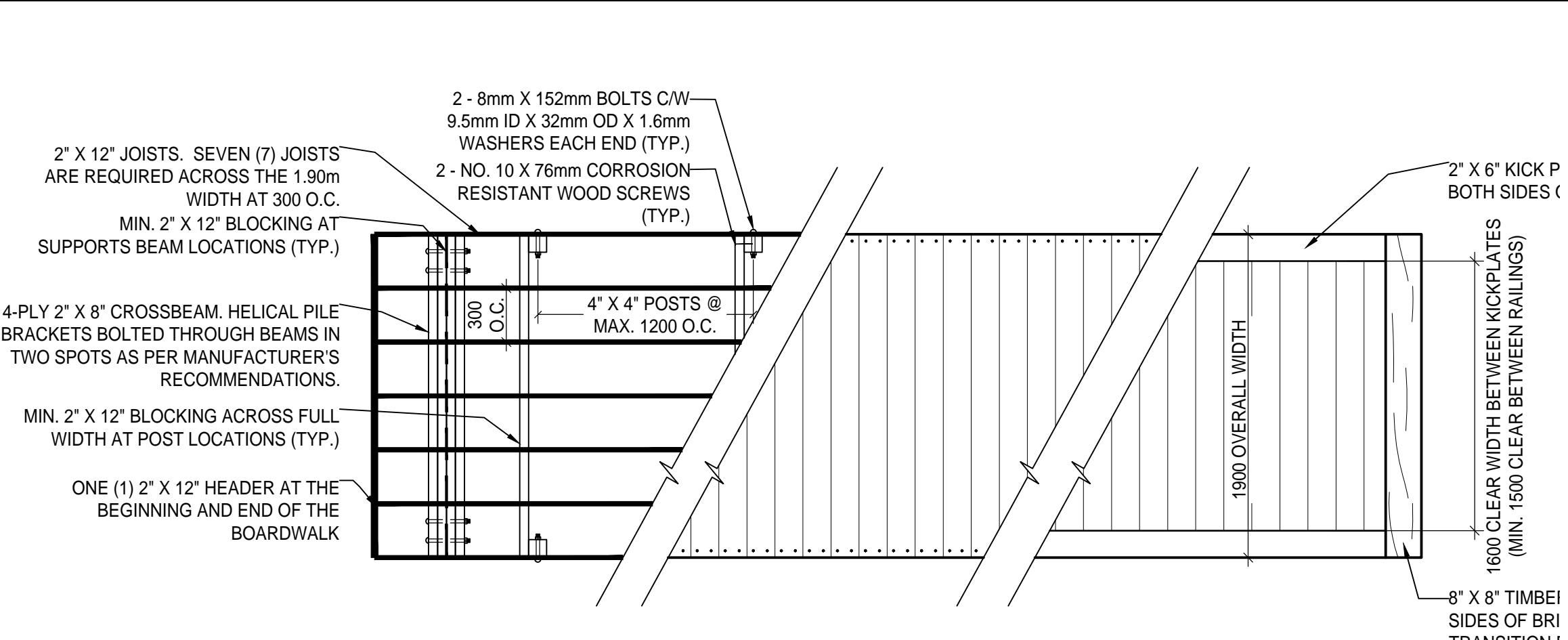
4 CONIFEROUS TREE PLANTING DETAIL
N.T.S.



5 SHRUB PLANTING DETAIL
N.T.S.



6 BOARDWALK WITH AUGERED PILES
N.T.S.



PLAN VIEW