

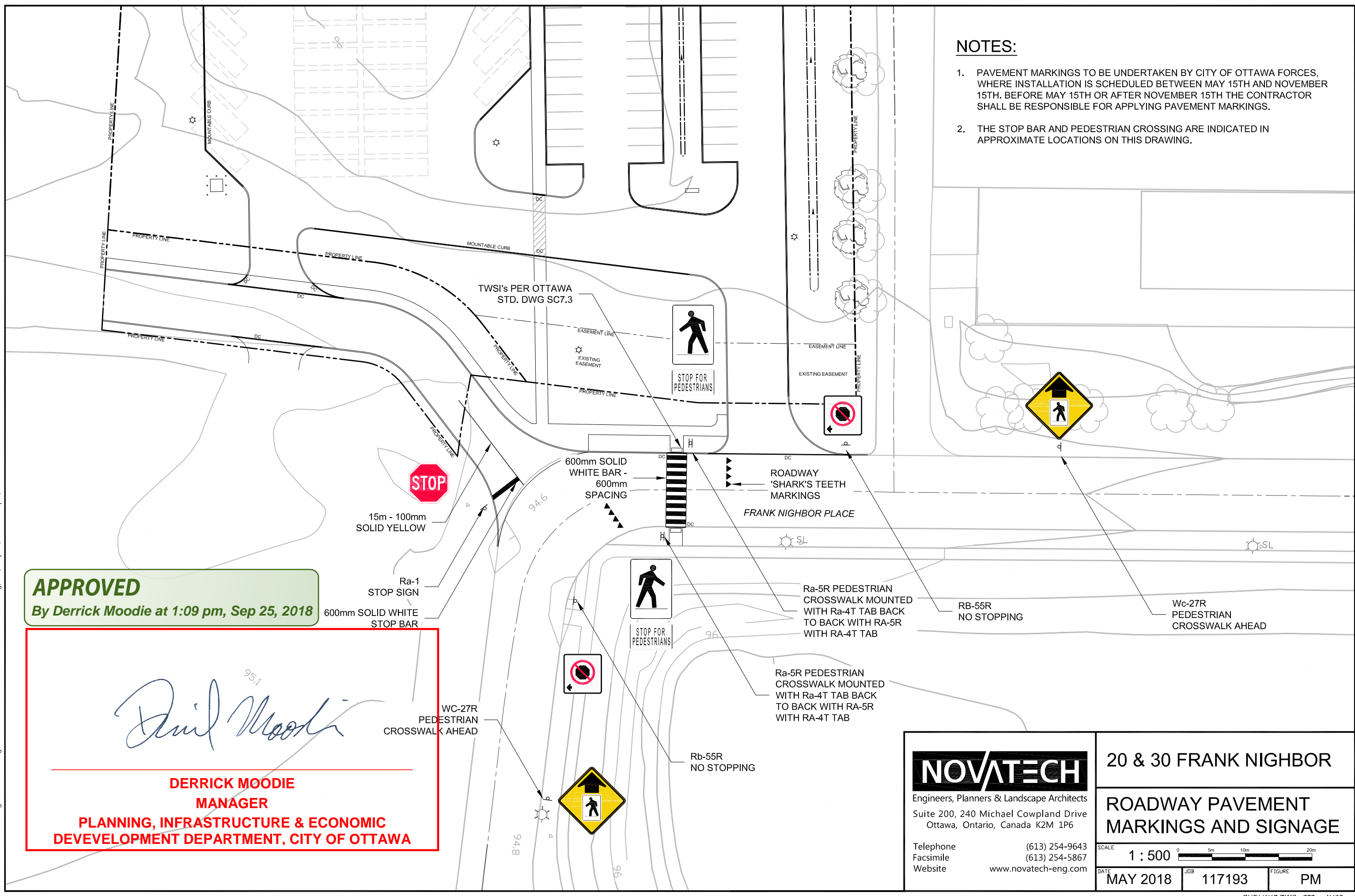
MA2017117193\CAD\Design\Issued Drawings\20180528-Coord-Traffic\Comments\117193-BP.dwg, PM, May 28, 2018 - 3:20pm, smatthews

NOTES:

1. PAVEMENT MARKINGS TO BE UNDERTAKEN BY CITY OF OTTAWA FORCES, WHERE INSTALLATION IS SCHEDULED BETWEEN MAY 15TH AND NOVEMBER 15TH. BEFORE MAY 15TH OR AFTER NOVEMBER 15TH THE CONTRACTOR SHALL BE RESPONSIBLE FOR APPLYING PAVEMENT MARKINGS.
2. THE STOP BAR AND PEDESTRIAN CROSSING ARE INDICATED IN APPROXIMATE LOCATIONS ON THIS DRAWING.

APPROVED
 By Derrick Moodie at 1:09 pm, Sep 25, 2018

Derrick Moodie
DERRICK MOODIE
MANAGER
PLANNING, INFRASTRUCTURE & ECONOMIC
DEVELOPMENT DEPARTMENT, CITY OF OTTAWA



NOVATECH
 Engineers, Planners & Landscape Architects
 Suite 200, 240 Michael Cowpland Drive
 Ottawa, Ontario, Canada K2M 1P6
 Telephone (613) 254-9643
 Facsimile (613) 254-5867
 Website www.novatech-eng.com

20 & 30 FRANK NIGHBOR
ROADWAY PAVEMENT MARKINGS AND SIGNAGE
 SCALE 1 : 500
 DATE MAY 2018 JOB 117193 FIGURE PM

D07-12-18-0016

CUT 11x17 DWG 270mm x 132mm #17578