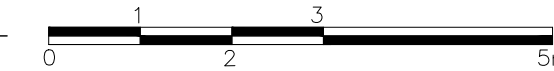


1 TREE CONSERVATION REPORT & LANDSCAPE PLAN
SCALE: 1:75



- GENERAL NOTES:**
- It is the responsibility of the appropriate contractor or official to report any errors, omissions or discrepancies on this plan with actual site conditions to the Landscape Architect before proceeding with construction.
 - The contractor is to notify all utility companies and authorities prior to any excavation and ascertain locations of underground services.
 - The contractor is to reinstaate all areas and items damaged as a result of construction activity.
 - The contractor is to comply with all pertinent codes and by-laws.
 - The contractor is to maintain a positive surface run-off throughout the entire construction period.
 - The Landscape Architect is not responsible for subsurface conditions.
 - The contractor is to identify all existing trees to remain on site with the Landscape Architect prior to construction.
 - The contractor is to stake the proposed location of all plant material in conjunction with the Landscape Architect prior to excavation.
 - Minimum distances for selected deciduous trees are as follows:
 - Building Foundations 7.5m
 - Sidewalks 1.5m
 - Public Streets 2.5m
 - Underground Infrastructure 2.0m
 - All trees within 1m of underground utility trenches are to be excavated by hand.
 - Remove all protective wrapping from tree trunks after installation.
 - Staking of trees shall only be performed if necessary.
 - Ensure that mulch is pulled back a min. distance of 75mm from base of tree trunk.

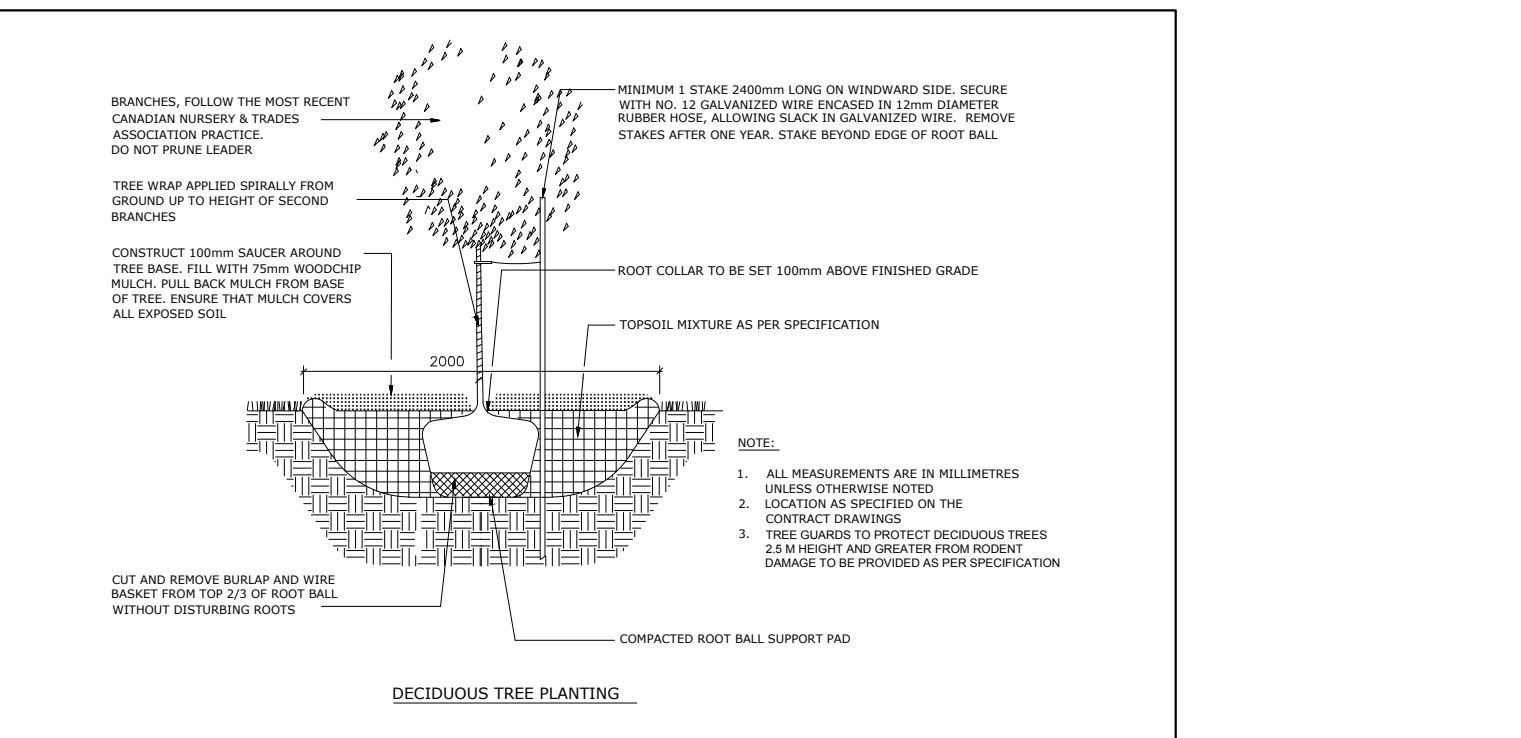
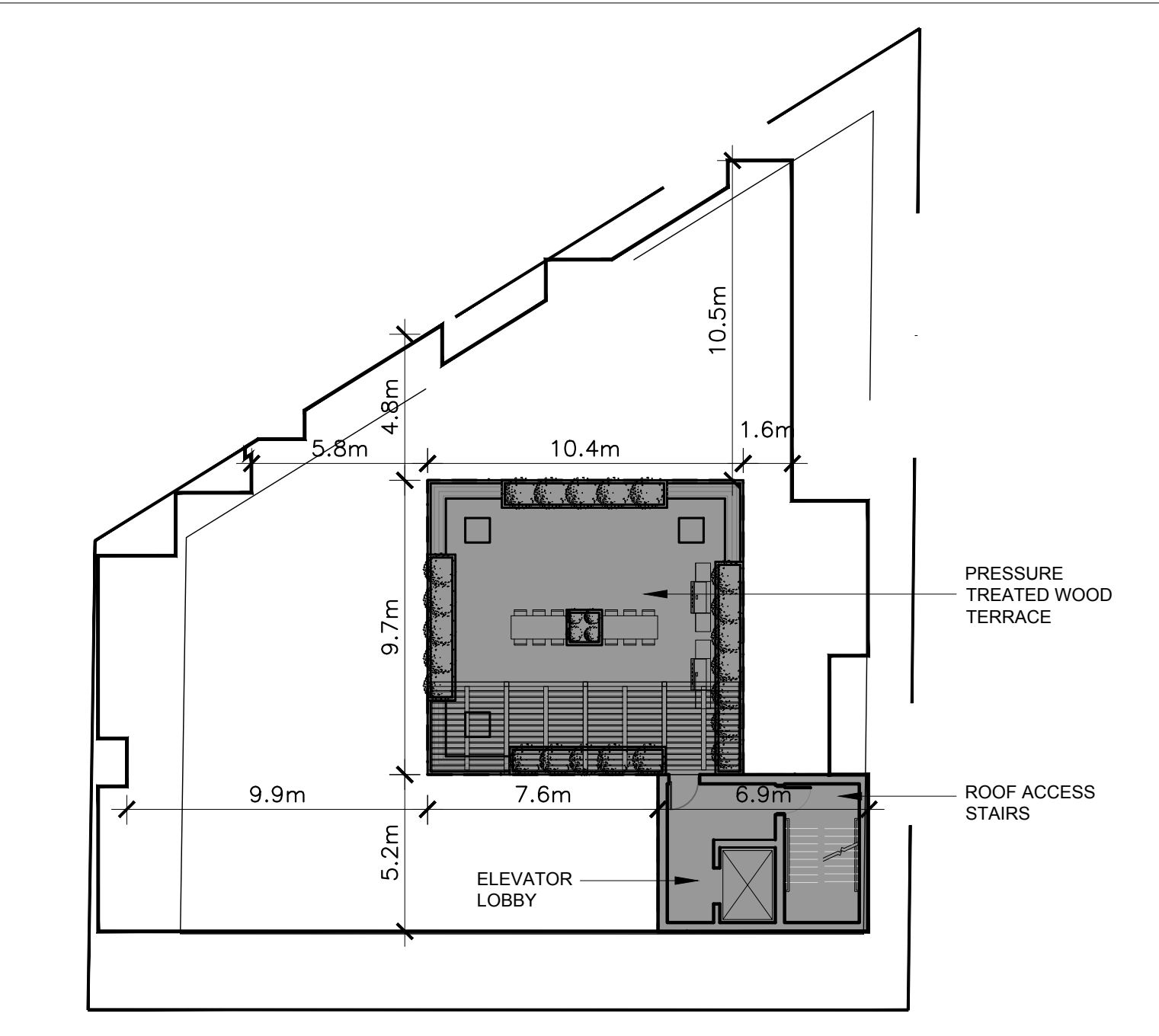
EXISTING TREE LIST

KEY	QTY	BOTANICAL NAME	COMMON NAME	SIZE	CONDITION	REMARKS
TREES						
AN	1	Acer negundo	Manitoba Maple	300mm DBH	Fair	To Remain
JN	1	Juglans nigra	Black Walnut	150mm DBH	Good	To Remain
TO	*	Thuja occidentalis	White Cedar	100-300mm DBH	Fair - Good	To Remain
UA	1	Ulmus americana	American Elm	400mm DBH	Dead	To Remain

* DENOTES NUMEROUS

PROPOSED PLANT LIST

KEY	QTY	BOTANICAL NAME	COMMON NAME	SIZE	CONDITION	REMARKS
TREES						
AC	2	Amelanchier canadensis	Shadowblow Serviceberry	60mm ø	B&B	



3 DECIDUOUS TREE PLANTING
SCALE: N.T.S.

TITLE: PLANTING PIT, WELL DRAINED SOILS (ROAD ALLOWANCE)

DATE: MAY 2017
REV: JAN 2017
DWG No: L.1

CLIENT

ORANGE DESIGN BUILD TEL: (613) 235-9891

CONSULTANTS

P2 concepts
739 RIDGEWOOD AVE., UNIT 203
OTTAWA, ONTARIO, K1V 6W8

CIVIL ENGINEERS:

DAVID SCHAEFFER ENGINEERING LTD.
100 BIRCH ROAD, TITSTVILLE ON
TEL: (613) 839-0566

LEGEND

- EXISTING TREE TO REMAIN
- PROPOSED DECIDUOUS TREE
- PROPOSED PRECAST CONCRETE PAVERS
- PROPOSED RIVERSTONE
- PROPOSED CONCRETE WALKWAY TO CITY STANDARDS (REFER TO CIVIL)
- PROPOSED SOD C/W 150mm SCREENED TOPSOIL
- ANNUALS AT OWNER'S DISCRETION

2	ISSUED FOR SITE PLAN APPLICATION	09/12/18	SS	JL
1	ISSUED FOR COMMENTS AND REVIEW	08/27/18	SS	JL
No.	Issue	Date	DR	CK

JAMES B. LENNOX & ASSOCIATES INC.
LANDSCAPE ARCHITECTS
3332 CARLING AVE. OTTAWA, ONTARIO K2J 5A8
Tel: (613) 722-5168 Fax: 1(866) 343-3942

PROJECT

PROPOSED 4 STOREY RESIDENTIAL BUILDING
99 PINHEY STREET, OTTAWA ON

DRAWING

TREE CONSERVATION REPORT & LANDSCAPE PLAN

STAMP

ASSOCIATION OF LANDSCAPE ARCHITECTS OF ONTARIO

SCALE

AS SHOWN

START DATE

AUGUST 2018

PROJECT NO.

XX-XXX

PROJECT NORTH

DRAWING NO.

L.1

PLOT SIZE ARCH-D