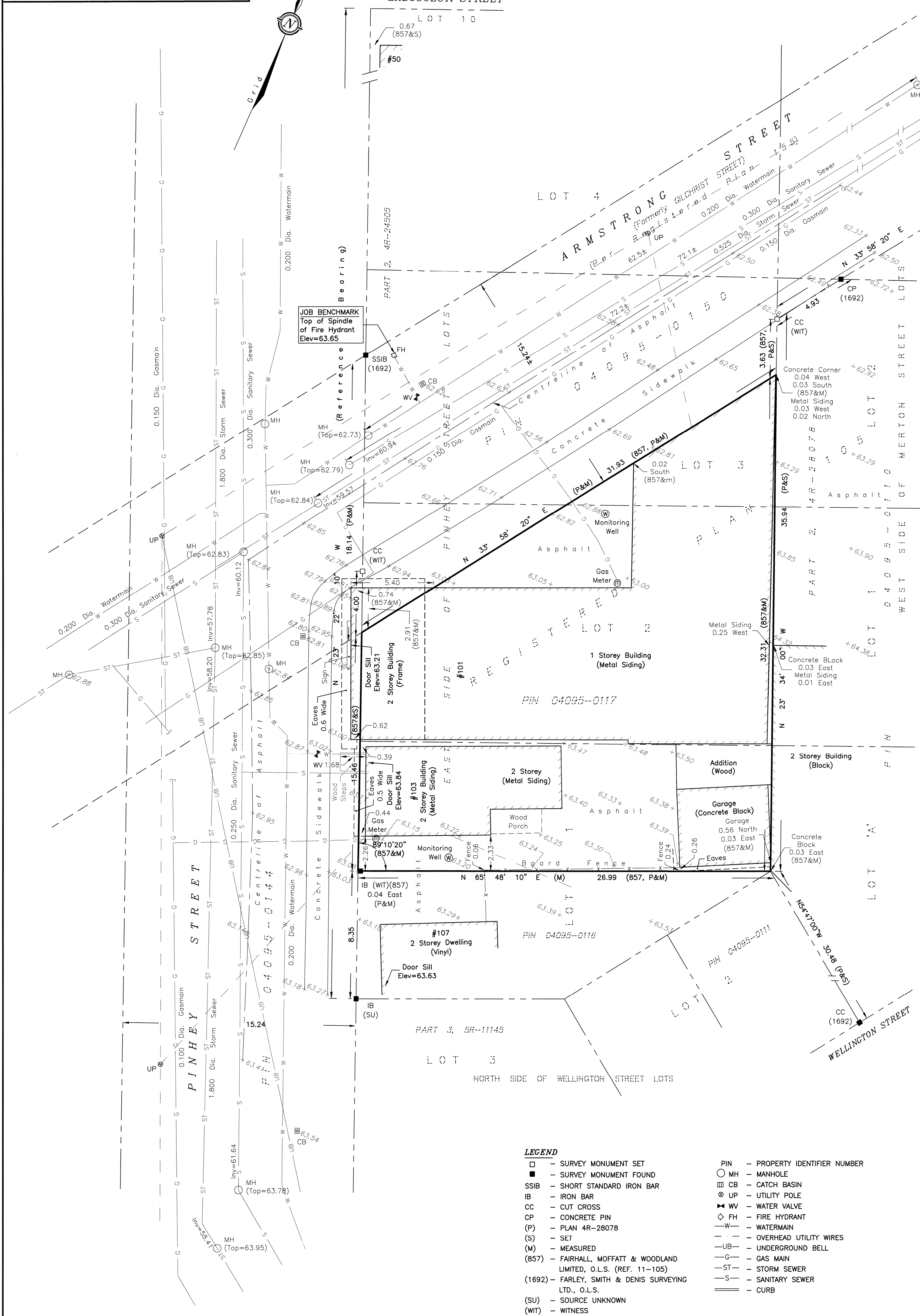


METRIC
DISTANCES AND ELEVATIONS SHOWN ON THIS PLAN ARE IN METRES
AND CAN BE CONVERTED TO FEET BY DIVIDING BY 0.3048



SURVEYOR'S REAL PROPERTY REPORT - PART 1
TOPOGRAPHIC PLAN OF SURVEY OF
PART OF LOTS 1, 2 & 3
(East of Pinhey Street)
REGISTERED PLAN 105
CITY OF OTTAWA

SCALE 1 : 150
0 1 2 5 10 15 metres
FAIRHALL, MOFFATT & WOODLAND LIMITED
ONTARIO LAND SURVEYORS

- ELEVATION NOTES**
- ELEVATIONS SHOWN HEREON ARE REFERRED TO GEODETIC DATUM (CGVD28).
 - ELEVATIONS FOR MANHOLE COVERS AND CATCH BASINS HAVE TO BE INDEPENDENTLY CONFIRMED BEFORE THEY CAN BE ACCEPTED FOR FINAL DESIGN OR CONSTRUCTION PURPOSES.
 - IT IS THE RESPONSIBILITY OF THE USER OF THIS INFORMATION TO VERIFY THAT THE JOB BENCHMARK HAS NOT BEEN ALTERED OR DISTURBED AND THAT ITS RELATIVE ELEVATION AND DESCRIPTION AGREE WITH THE INFORMATION SHOWN ON THIS DRAWING.

- UTILITY NOTES**
- THIS DRAWING CANNOT BE ACCEPTED AS ACKNOWLEDGING ALL OF THE UNDERGROUND UTILITIES AND IT WILL BE THE RESPONSIBILITY OF THE USER TO CONTACT THE RESPECTIVE UTILITY AUTHORITIES FOR CONFIRMATION OR LOCATION.
 - UNDERGROUND UTILITIES, AS REPORTED ON THIS DRAWING, ARE BASED ON AN ACTUAL 'FIELD LOCATE' BY THE RESPECTIVE UTILITY AGENCIES OR HAVE BEEN COMPILED FROM DATA OBTAINED FROM THE FOLLOWING SOURCES:
a) CITY OF OTTAWA PUBLIC UTILITIES REGISTRY
b) UNDERGROUND UTILITY LOCATE USL-1
 - BEFORE ANY WORK INVOLVING PROBING, EXCAVATING, ETC., A FIELD LOCATION OF UNDERGROUND PLANT BY THE PERTINENT UTILITY AUTHORITY IS MANDATORY.
 - INVERTS SHOWN ARE PER CITY OF OTTAWA ENGINEERING DRAWINGS.

NOTE
BEARINGS ARE GRID DERIVED FROM THE EASTERLY LIMIT OF PINHEY STREET AS SHOWN ON PLAN 4R-28078, HAVING A BEARING OF N 23° 22' 10" W AND ARE REFERRED TO THE CENTRAL MERIDIAN, 76°30' W LONGITUDE MTM ZONE 9, (NAD83 ORIGINAL).

SURVEYOR'S REAL PROPERTY REPORT - PART 2
REPORT SUMMARY

DESCRIPTION OF LAND
PART OF LOTS 1, 2 & 3, (EAST OF PINHEY STREET), REGISTERED PLAN 105, CITY OF OTTAWA AS IN ALL OF PIN 04095-0117.

REGISTERED EASEMENTS
NONE REGISTERED

REMARKS
NOTE LOCATIONS OF FENCES AND BUILDINGS.

ZONING
COMPLIANCE WITH ZONING, LAND USE, ENVIRONMENTAL AND BUILDING REGULATIONS NOT CERTIFIED BY THIS REPORT.

THIS REPORT WAS PREPARED FOR
ORANGE RENOVATIONS & RESTORATIONS
THE UNDERSIGNED ACCEPTS NO
RESPONSIBILITY FOR USE BY OTHER PARTIES.

SURVEYOR'S CERTIFICATE

I CERTIFY THAT:
1. THIS SURVEY AND PLAN ARE CORRECT AND IN ACCORDANCE WITH THE SURVEYS ACT, THE SURVEYORS ACT AND THE REGULATIONS MADE UNDER THEM.
2. THE SURVEY WAS COMPLETED ON MAY 23, 2018.

DATE: 2018/05/23
JOHN H. GUTR
ONTARIO LAND SURVEYOR

Fairhall Moffatt & Woodland
LIMITED
ONTARIO LAND SURVEYORS
OTTAWA
Surveying and Land Information Services
100-600 TERRY FOX DRIVE, KANATA, ONTARIO K2L 4B6
TEL: (613) 591-2580 FAX: (613) 591-1495
www.fmw.on.ca

ASSOCIATION OF ONTARIO
LAND SURVEYORS
PLAN SUBMISSION FORM
2050470

THIS PLAN IS NOT VALID
UNLESS IT IS AN EMBOSSED
ORIGINAL COPY
ISSUED BY THE SURVEYOR
in accordance with
Regulation 1026, Section 29 (3).

JOB No.
Y 2 0 3 0 0

E 365432, N 5029609

REFERENCE No.
19 - 105

S:\J085\20300\DWG 2018-05-23
SR203Y-TP.DWG (n)

- LEGEND**
- - SURVEY MONUMENT SET
 - - SURVEY MONUMENT FOUND
 - SSIB - SHORT STANDARD IRON BAR
 - IB - IRON BAR
 - CC - CUT CROSS
 - CP - CONCRETE PIN
 - (P) - PLAN 4R-28078
 - (S) - SET
 - (M) - MEASURED
 - (857) - FAIRHALL, MOFFATT & WOODLAND LIMITED, O.L.S. (REF. 11-105)
 - (1692) - FARLEY, SMITH & DENIS SURVEYING LTD., O.L.S.
 - (SU) - SOURCE UNKNOWN
 - (WIT) - WITNESS
 - DIA. - DIAMETER
 - INV. - INVERT
 - PIN - PROPERTY IDENTIFIER NUMBER
 - MH - MANHOLE
 - ▣ CB - CATCH BASIN
 - ⊕ UP - UTILITY POLE
 - ⊕ WV - WATER VALVE
 - ⊕ FH - FIRE HYDRANT
 - W - WATERMAIN
 - O - OVERHEAD UTILITY WIRES
 - UB - UNDERGROUND BELL
 - G - GAS MAIN
 - ST - STORM SEWER
 - S - SANITARY SEWER
 - C - CURB