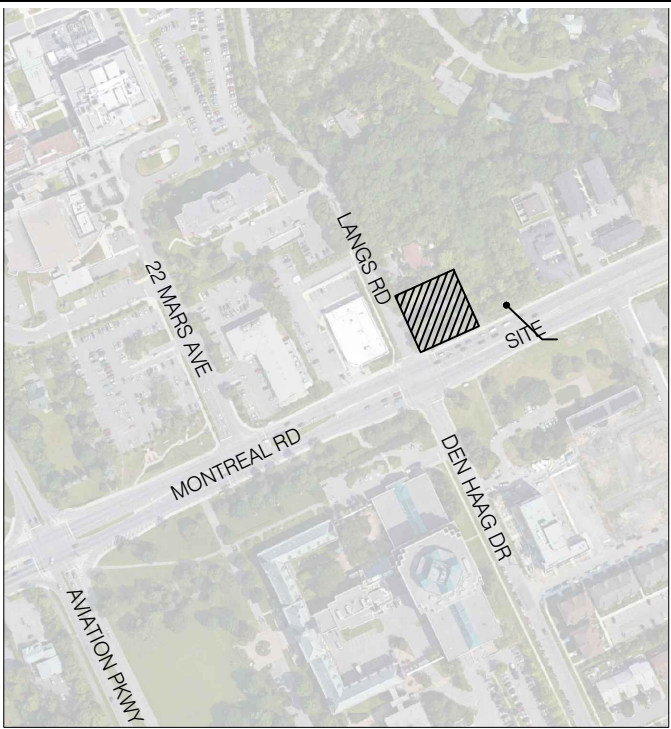


LEGEND:

- PROPERTY LINE
- x --- EXISTING FENCE
- EXISTING TREE TO REMAIN
- EXISTING TREE TO BE REMOVED
- EXISTING CONIFEROUS TREE TO BE REMOVED
- EXISTING VEGETATION TO BE REMOVED

EXISTING TREES TO BE REMOVED			
NO.	TREE SPECIES	DBH	CONDITION COMMENTS
1	Russian Olive/Elaeagnus angustifolia	17; 25cm	Fair Double stemmed, heavy lean toward street
2	Sugar Maple/Acer Saccharum.	41cm	Good
3	Colorado Blue Spruce/Picea pungens Glauca	21cm	Fair
4	Manitoba Maple/Acer negundo	17cm	Fair City Property
5	Manitoba Maple/Acer negundo	15cm	Fair
6	Colorado Blue Spruce/Picea pungens Glauca	25cm	Good City Property
7	Scots Pine/Pinus sylvestris	32cm	Fair
8	Red Pine/Pinus resinosa	24cm	Fair
9	Red Pine/Pinus resinosa	20cm	Good
10	Colorado Blue Spruce/Picea pungens Glauca	29cm	Good
11	Norway Spruce/Picea abies	34cm	Good
12	Colorado Blue Spruce/Picea pungens Glauca	43cm	Fair
13	Norway Spruce/Picea abies	32cm	Fair City Property
14	Colorado Blue Spruce/Picea pungens Glauca	34cm	Fair
15	Colorado Blue Spruce/Picea pungens Glauca	32cm	Fair City Property
16	Colorado Blue Spruce/Picea pungens Glauca	27cm	Fair
17	Colorado Blue Spruce/Picea pungens Glauca	23cm	Fair
18	Colorado Blue Spruce/Picea pungens Glauca	24cm	Fair
19	Manitoba Maple/Acer negundo	11cm	Poor Pruned for Hydro, City Property
20	Jack Pine/Pinus banksiana	17cm	Poor
21	Norway Maple/Acer platanoides	13; 12cm	Fair Double Stemmed
22	Colorado Blue Spruce/Picea pungens Glauca	34cm	Good
23	American Elm/Ulmus americana	14cm	Poor
25	Manitoba Maple/ Acer negundo	11; 11cm	Fair Double Stemmed
26	Manitoba Maple/Acer negundo	11cm	Good
29	Norway Maple/Acer platanoides	30cm	Good
30	Colorado Blue Spruce/Picea pungens Glauca	28cm	Fair
31	Colorado Blue Spruce/Picea pungens Glauca	28cm	Good
32	Eastern White Cedar/Thuja occidentalis	12cm	Good
33	American Elm/Ulmus americana	11cm	Fair
34	Red Pine/Pinus resinosa	20cm	Good
35	Norway Spruce/Picea abies	20cm	Good
38	Colorado Blue Spruce/Picea pungens Glauca	25cm	Good
39	Colorado Blue Spruce/Picea pungens Glauca	25cm	Fair
40	Colorado Blue Spruce/Picea pungens Glauca	23cm	Fair
41	White Spruce/Picea glauca	13cm	Fair
43	Red Pine/Pinus resinosa	14cm	Good
47	Eastern White Cedar/Thuja occidentalis	45cm	Good
49	White Spruce/Picea glauca	12cm	Fair
50	Black Willow /Salix nigra	74cm	Fair
51	Red Pine/Pinus resinosa	21cm	Poor
52	Colorado Blue Spruce/Picea pungens Glauca	27cm	Fair
53	Colorado Blue Spruce/Picea pungens Glauca	25cm	Fair
54	Colorado Blue Spruce/Picea pungens Glauca	21cm	Fair
55	Crab Apple/Malus spp.	11; 14cm	Good Double Stemmed, City Property
56	Manitoba Maple/Acer negundo	28; 36cm	Poor Double Stemmed, City Property

TREES TO REMAIN			
NO.	TREE SPECIES	DBH	CONDITION COMMENTS
24	White Ash/Fraxinus americana	15; 15cm	Poor Adjacent private Property
27	American Elm/Ulmus americana	11cm	Fair Adjacent private Property
28	American Elm/Ulmus americana	10cm	Fair Adjacent private Property
36	Colorado Blue Spruce/Picea pungens Glauca	26cm	Fair
37	Black Willow/Salix nigra	28cm	Fair
42	Chinese Elm/Ulmus parvifolia	36cm	Good
44	Scots Pine/Pinus sylvestris	17cm	Fair-Poor
45	Scots Pine/Pinus sylvestris	12cm	Poor
46	White Pine/Pinus sylvestris	18cm	Fair
48	Scots Pine/Pinus sylvestris	24cm	Good
56	Manitoba Maple/Acer negundo	10cm	Good City Property
57	Manitoba Maple/Acer negundo	10cm	Good Adjacent private Property



KEY MAP, NTS
GENERAL NOTES

- All general site information and conditions compiled from survey.
- Do not scale this drawing.
- Report any discrepancies prior to commencing work. No responsibility is born by the Landscape Architect for unknown subsurface conditions.
- Contractor to check and verify all dimensions on site and report any errors and/or omissions.
- Reinstate all areas and items damaged as a result of construction activities.
- Drawing may not be used for construction until signed by Landscape Architect as issued for construction.
- The accuracy of the position of utilities is not guaranteed.
- Individual utility co. must be contacted for confirmation of utility existence and location prior to digging.
- This drawing is an instrument of service and requires the permission of the Landscape Architect for use. Copyright is reserved by Lashley+Associates corporation.

TREE PRESERVATION, PROTECTION & REMOVAL NOTES

- All existing trees to remain shall be protected from damage during construction by maintaining a protection fence at the critical root zone of the tree or group of trees.

-CRZ: Diameter of trunk in cm multiplied by 10cm
- Storage of materials and/or equipment is prohibited within the drip line of all existing trees to remain.
- Contractor must comply with the Migratory Birds Convention Act (MBCA), 1994 and Regulations.
- Trees noted for removal must be cut outside of bird nesting season.
- Bird nesting season: April 1st until August 31st.

2	2018/ 08/ 20	RE-ISSUED FOR SITE PLAN APPLICATION
1	2018/ 04/ 19	ISSUED FOR SITE PLAN APPLICATION

NO.	DATE	DESCRIPTION
SEAL:		NORTH:

LASHLEY+ASSOCIATES
LANDSCAPE ARCHITECTURE

202-220 GLADSTONE AVENUE
OTTAWA, ON K1Y 3E8

T 613 233 8579
F 613 233 4051
W LashleyLA.com

PROJECT:

Shepherds of Good Hope

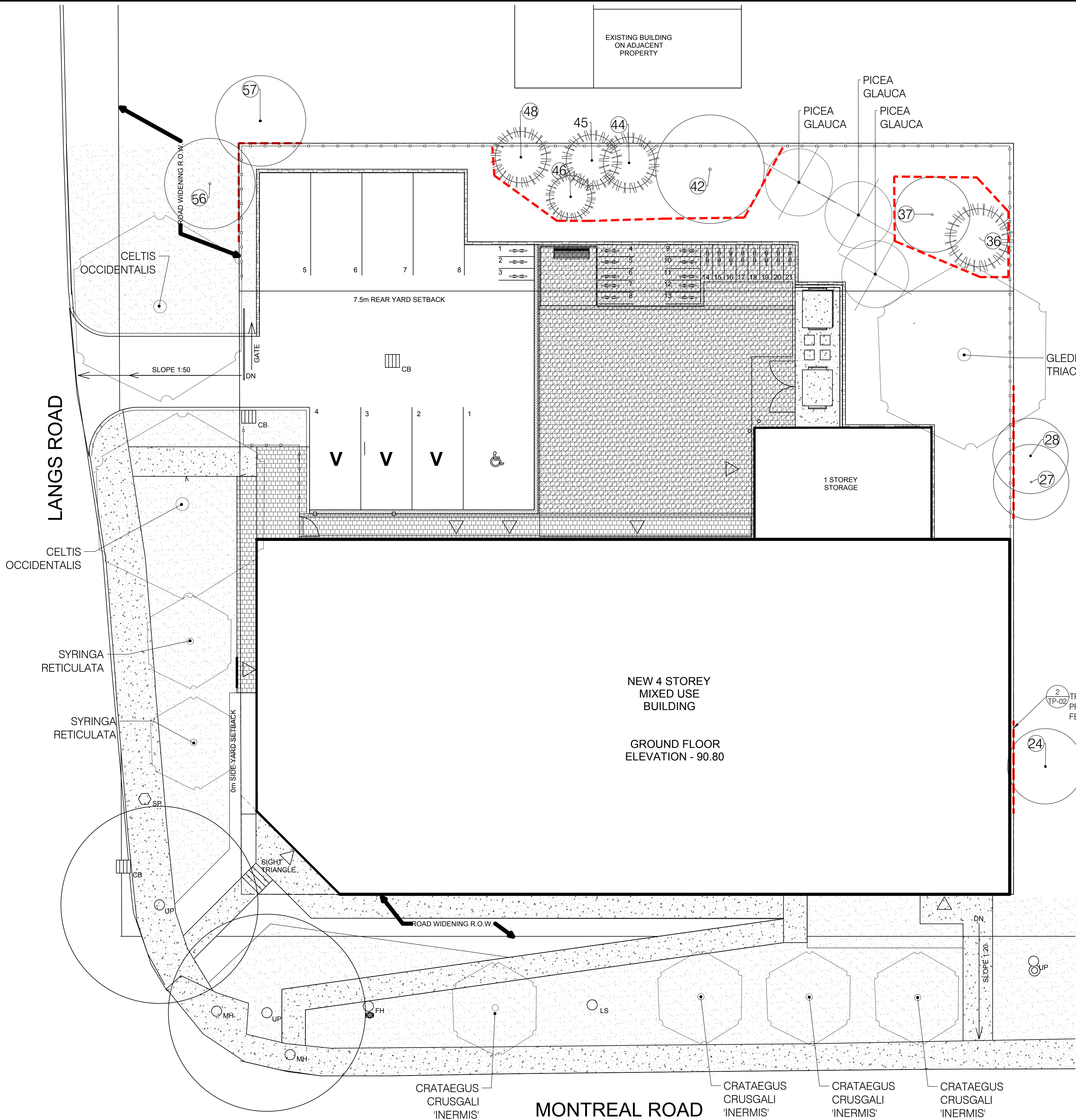
765 Montreal Rd
OTTAWA, ON

DRAWING TITLE:

**PRE-DEVELOPMENT
VEGETATION MAP**

DATE: 2018/02/08
SCALE: As Shown
DRAWN BY: A.K
LA PROJECT NO. 18695-1

DRAWING NO.:
TP-01



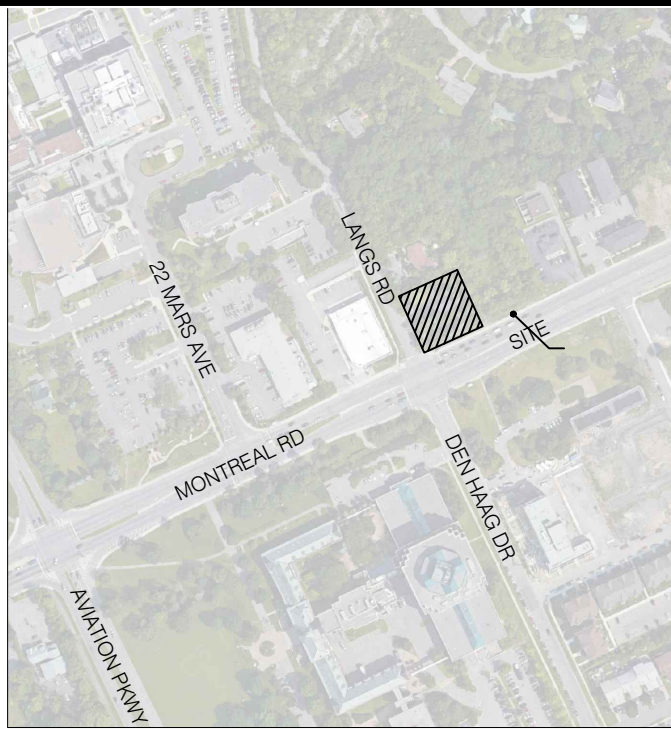
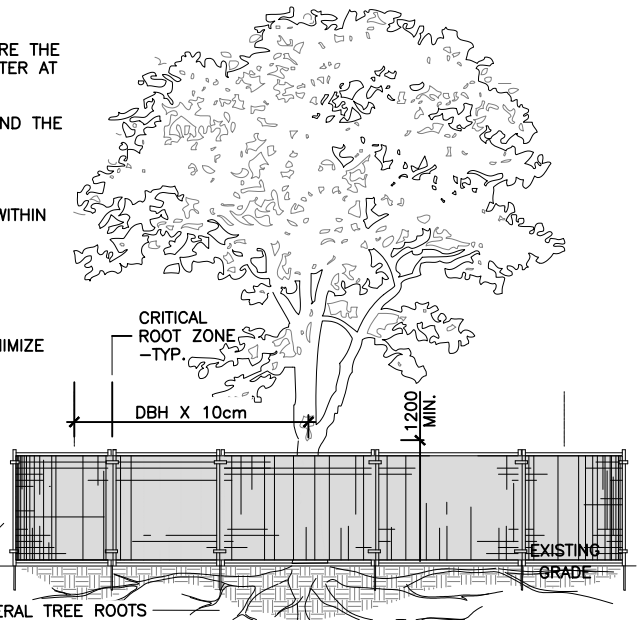
LEGEND:

- PROPERTY LINE
- TREE PROTECTION FENCING
- NEW 1.5m HIGH METAL FENCE
- EXISTING TREE TO REMAIN
- NEW TREE
- NEW CONIFEROUS TREE

TREES TO REMAIN				
NO.	TREE SPECIES	DBH	CONDITION	COMMENTS
24	White Ash/ <i>Fraxinus americana</i>	15, 15cm	Poor	Adjacent private Property
27	American Elm/ <i>Ulmus americana</i>	11cm	Fair	Adjacent private Property
28	American Elm/ <i>Ulmus americana</i>	10cm	Fair	Adjacent private Property
36	Colorado Blue Spruce/ <i>Picea pungens</i> Glauca	26cm	Fair	
37	Black Willow/ <i>Salix nigra</i>	28cm	Fair	
42	Chinese Elm/ <i>Ulmus parvifolia</i>	36cm	Good	
44	Scots Pine/ <i>Pinus sylvestris</i>	17cm	Fair-Poor	
45	Scots Pine/ <i>Pinus sylvestris</i>	12cm	Poor	
46	White Pine/ <i>Pinus sylvestris</i>	18cm	Fair	
48	Scots Pine/ <i>Pinus sylvestris</i>	24cm	Good	
56	Manitoba Maple/ <i>Acer negundo</i>	19cm	Good	City Property
57	Manitoba Maple/ <i>Acer negundo</i>	10cm	Good	Adjacent private Property

- NOTES:**
THE FOLLOWING PROTECTION MEASURES MUST BE IMPLEMENTED FOR RETAINED TREES, BOTH WITHIN THE WORK AREA AND ON ADJACENT PARCELS.
- UNDER THE GUIDANCE OF AN ARBORIST, ERECT A FENCE AT THE CRITICAL ROOT ZONE (CRZ) OF TREES WHERE THE CRZ IS ESTABLISHED AS BEING 10 CENTIMETERS FROM THE TRUNK FOR EVERY CENTIMETER OF TRUNK DIAMETER AT BREAST HEIGHT.
 - TREE PROTECTION SHALL BE ERECTED TO PROVIDE A CONTINUOUS BARRICADE BETWEEN DESIGNATED TREES AND THE WORK AREA PRIOR TO CONSTRUCTION.
 - TUNNEL OR BORE WHEN DIGGING WITHIN THE CRZ OF A TREE.
 - ENSURE ALL EQUIPMENT AND CONSTRUCTION RELATED MATERIAL ARE NOT PLACED OR TEMPORARILY STORED WITHIN THE CRZ.
 - ENSURE EXHAUST FLAMES FROM ALL EQUIPMENT ARE NOT DIRECTED TOWARDS ANY TREE'S CANOPY.
 - FLOODING OR DEPOSITION OF SEDIMENT SHALL BE PREVENTED WHERE TREES ARE LOCATED.
 - ALL DISTURBED ROOT SYSTEMS SHALL BE EXPOSED AND BACKFILLED IN ONE CONTINUOUS OPERATION TO MINIMIZE DESICCATION.
 - EXPOSED ROOTS SHALL BE KEPT CONTINUOUSLY MOIST DURING EXCAVATION.
 - REMOVE BROKEN AND DAMAGED ROOTS WITH SHARP PRUNING SHEARS.
 - THE TREE PROTECTION FENCE IS TEMPORARY, SHALL BE MAINTAINED AT ALL TIMES DURING CONSTRUCTION OPERATIONS, AND SHALL BE REMOVED UPON COMPLETION OF WORK WHEN AGREED TO BY THE CONTRACT ADMINISTRATOR AND LANDSCAPE ARCHITECT.

2 TP-02 TREE PROTECTION FENCE



- KEY MAP, NTS**
GENERAL NOTES
- All general site information and conditions compiled from survey.
 - Do not scale this drawing.
 - Report any discrepancies prior to commencing work. No responsibility is born by the Landscape Architect for unknown subsurface conditions.
 - Contractor to check and verify all dimensions on site and report any errors and/or omissions.
 - Reinstate all areas and items damaged as a result of construction activities.
 - Drawing may not be used for construction until signed by Landscape Architect as issued for construction.
 - The accuracy of the position of utilities is not guaranteed.
 - Individual utility co. must be contacted for confirmation of utility existence and location prior to digging.
 - This drawing is an instrument of service and requires the permission of the Landscape Architect for use. Copyright is reserved by Lashley+Associates corporation.

- TREE PRESERVATION, PROTECTION & REMOVAL NOTES**
- All existing trees to remain shall be protected from damage during construction by maintaining a protection fence at the critical root zone of the tree or group of trees.
-CRZ: Diameter of trunk in cm multiplied by 10cm
 - Storage of materials and/or equipment is prohibited within the drip line of all existing trees to remain.
 - Contractor must comply with the Migratory Birds Convention Act (MBCA), 1994 and Regulations.
 - Trees noted for removal must be cut outside of bird nesting season.
 - Bird nesting season: April 1st until August 31st.

2	2018/ 08/ 20	RE-ISSUED FOR SITE PLAN APPLICATION
1	2018/ 04/ 19	ISSUED FOR SITE PLAN APPLICATION

NO.	DATE	DESCRIPTION
SEAL:		NORTH:

LASHLEY+ASSOCIATES
LANDSCAPE ARCHITECTURE
202-250 GLADSTONE AVENUE
OTTAWA, ON K1T 5E8
T 613 233 6579
F 613 233 4051
W LashleyLA.com

PROJECT:
Shepherds of Good Hope
765 Montreal Rd
OTTAWA, ON

DRAWING TITLE:
**POST-DEVELOPMENT EXISTING
VEGETATION MAP**

DATE: 2018/02/08
SCALE: As Shown
DRAWN BY: A.K
LA PROJECT NO. 18695-1
DRAWING NO.:
TP-02