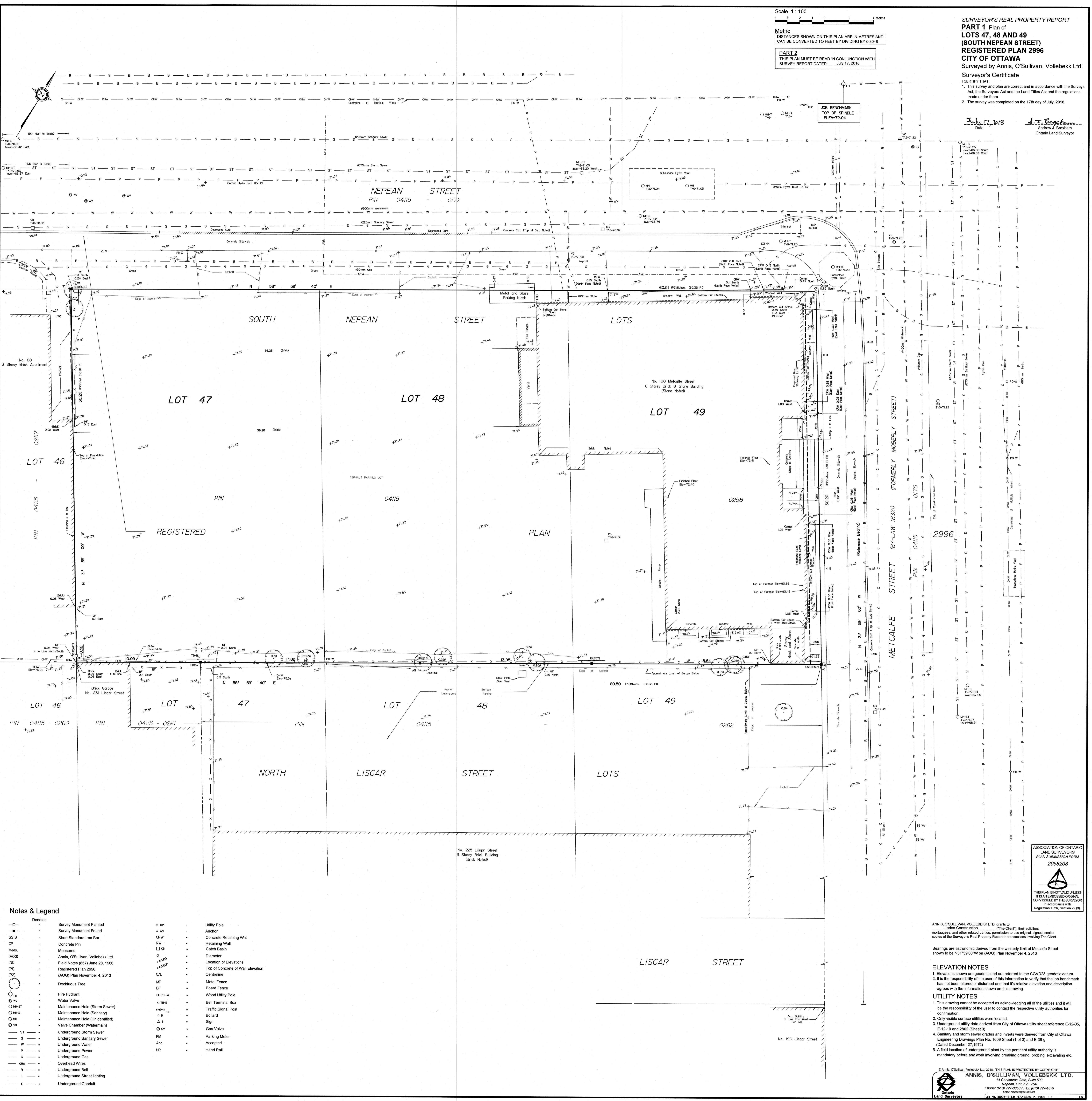


July 17, 2018
 Date
 Andrew J. Broham
 Ontario Land Surveyor

Scale 1:100
 Metric
 DISTANCES SHOWN ON THIS PLAN ARE IN METRES AND CAN BE CONVERTED TO FEET BY DIVIDING BY 0.3048
PART 2
 THIS PLAN MUST BE READ IN CONJUNCTION WITH SURVEY REPORT DATED: July 17, 2018



Notes & Legend

—□—	Denotes	Survey Monument Planted	○ UP	Utility Pole
—■—	Survey Monument Found	○ AN	Anchor	
SSIB	Short Standard Iron Bar	CRW	Concrete Retaining Wall	
CP	Concrete Pin	RW	Retaining Wall	
Meas.	Measured	□ CB	Catch Basin	
(AOG)	Annis, O'Sullivan, Vollebek Ltd.	○	Diameter	
(NI)	Field Notes (857) June 28, 1966	○ Elev	Location of Elevations	
(PI)	Registered Plan 2996	○ Elev	Top of Concrete of Wall Elevation	
(ADG)	(ADG) Plan November 4, 2013	○ Cent	Centreline	
○	Deciduous Tree	MF	Metal Fence	
○ FH	Fire Hydrant	BF	Board Fence	
○ WV	Water Valve	○ PO-W	Wood Utility Pole	
○ MH-ST	Maintenance Hole (Storm Sewer)	○ TB-B	Ball Terminal Box	
○ MH-S	Maintenance Hole (Sanitary)	○ TSP	Traffic Signal Post	
○ MH-U	Maintenance Hole (Unidentified)	○ B	Bollard	
○ VC	Valve Chamber (Waterman)	△ S	Sign	
—ST—	Underground Storm Sewer	○ GV	Gas Valve	
—S—	Underground Sanitary Sewer	PM	Parking Meter	
—W—	Underground Water	Acc.	Accepted	
—P—	Underground Power	HR	Hand Rail	
—G—	Underground Gas			
—OW—	Overhead Wires			
—B—	Underground Bell			
—L—	Underground Street Lighting			
—C—	Underground Conduit			

ANIS, O'SULLIVAN, VOLLEBEK LTD. grants to (The Client), their solicitors, mortgagees, and other related parties, permission to use original, signed, sealed copies of the Surveyor's Real Property Report in transactions involving The Client.
 Bearings are astronomic derived from the westerly limit of Metcalfe Street shown to be N31°59'00"W on (AOG) Plan November 4, 2013.
ELEVATION NOTES
 1. Elevations shown are geodetic and are referred to the CGVD28 geodetic datum.
 2. It is the responsibility of the user of this information to verify that the job benchmark has not been altered or disturbed and that its relative elevation and description agrees with the information shown on this drawing.
UTILITY NOTES
 1. This drawing cannot be accepted as acknowledging all of the utilities and it will be the responsibility of the user to contact the respective utility authorities for confirmation.
 2. Only visible surface utilities were located.
 3. Underground utility data derived from City of Ottawa utility sheet reference E-12-05, E-12-10 and 2802 (Sheet 3).
 4. Sanitary and storm sewer grades and inverts were derived from City of Ottawa Engineering Drawings Plan No. 1609 Sheet (1 of 3) and B-36-g (Dated December 27, 1972).
 5. A field location of underground plant by the pertinent utility authority is mandatory before any work involving breaking ground, probing, excavating etc.

