

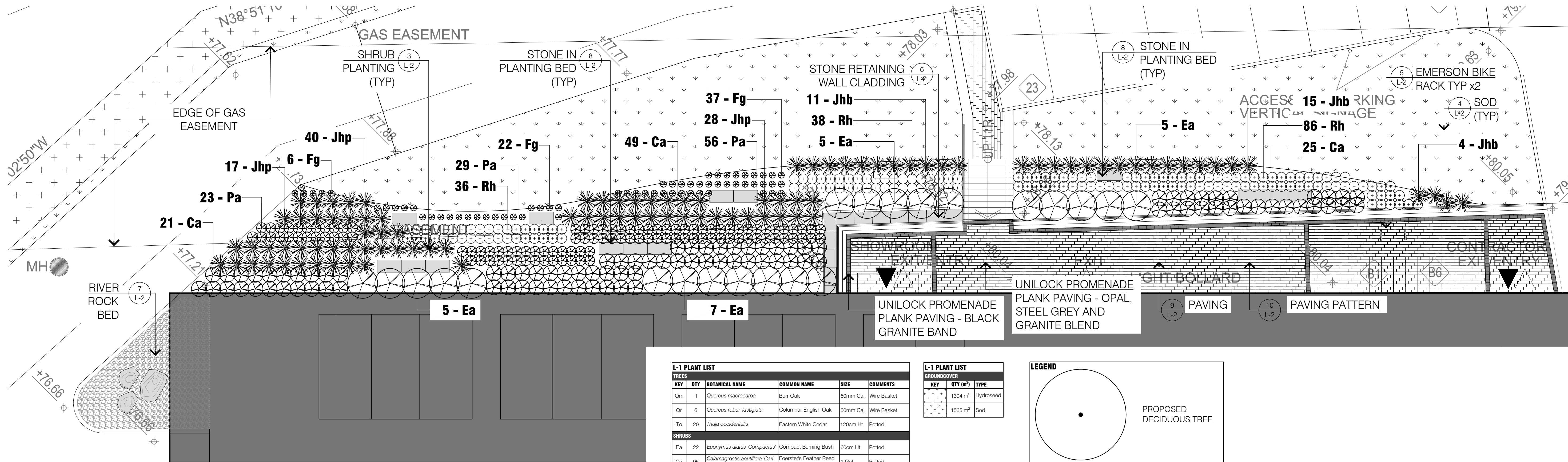
L1-1 GENERAL NOTES

- All general site information and conditions compiled from architect's and engineer's plans and surveys.
- Do not scale this drawing.
- Report any discrepancies prior to commencing work. No responsibility is born by the Landscape Architect for unknown subsurface conditions.
- Reinstate all areas and items damaged as a result of construction activities to the satisfaction of the Landscape Architect.
- Drawing may not be used for construction until signed by Landscape Architect as issued for construction.
- The accuracy of the position of utilities is not guaranteed.
- Individual utility co. must be contacted for confirmation of utility existence and location prior to digging.
- This drawing is an instrument of service and requires the permission of the Landscape Architect for use. Copyright is reserved by the Landscape Architect, David M. Lashley.

L1-1 LANDSCAPE NOTES

- Plant material shall be No. 1 Grade and shall comply with the Metric Guide Specifications for Nursery stock (latest edition), published by Canadian Nursery Trades Association.
- Plant substitutions shall not be permitted unless approved by the Landscape Architect.
- Obtain approval of planting prior to digging.
- Topsoil shall be garden soil mixture sandy loam with min. 5% organic matter and peat moss added at ratio of 1:10, topsoil to be approved by Landscape Architect.

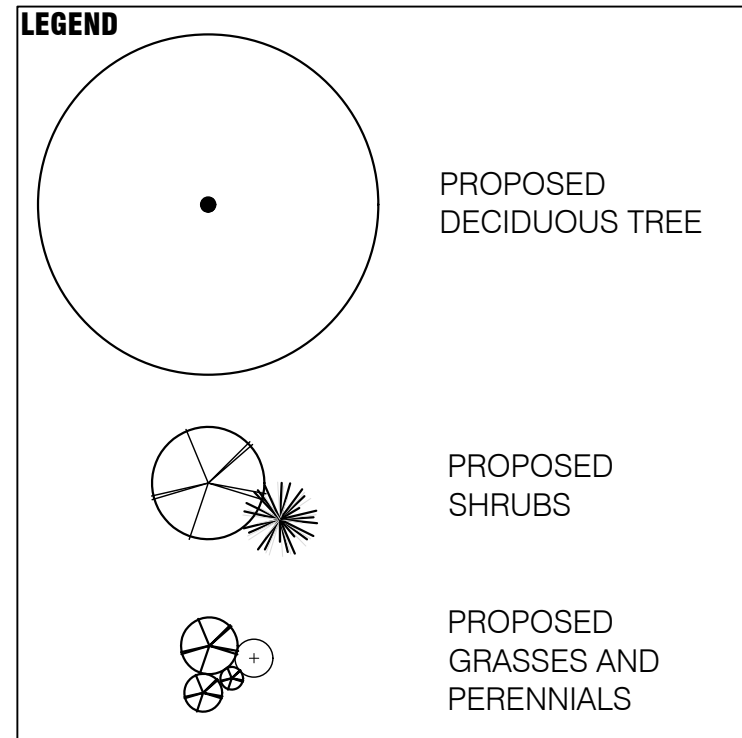
LANDSCAPE PLAN



EAST FACADE DETAIL PLAN

L-1 PLANT LIST					
TREES					
KEY	QTY	BOTANICAL NAME	COMMON NAME	SIZE	COMMENTS
Qm	1	Quercus macrocarpa	Burr Oak	60mm Cal.	Wire Basket
Qr	6	Quercus robur 'fastigiata'	Columnar English Oak	50mm Cal.	Wire Basket
To	20	Thuja occidentalis	Eastern White Cedar	120cm Ht.	Potted
SHRUBS					
Ea	22	Euonymus alatus 'Compactus'	Compact Burning Bush	60cm Ht.	Potted
Ca	95	Calamagrostis acutiflora 'Carl Foerster'	Foerster's Feather Reed Grass	2 Gal.	Potted
Fg	71	Festuca glauca	Festuca Grass	1 Gal.	Potted
Jhb	54	Juniperus horizontalis 'Bar Harbour'	Bar Harbour Creeping Juniper	2 Gal.	Potted
Jhp	45	Juniperus horizontalis 'Plumosa Compacta'	Compact Andorra Juniper	2 Gal.	Potted
Pa	108	Pennisetum alopecuroides 'Hameln'	Dwarf Fountain Grass	1 Gal.	Potted
Rh	161	Rudbeckia hirta	Black-Eyed Susan	1 Gal.	Potted

L-1 PLANT LIST			
GROUNDCOVER			
KEY	QTY (m²)	TYPE	
	1304 m²	Hydroseed	
	1565 m²	Sod	



3	2018-08-28	REVISED SPA SUBMISSION
2	2018-01-31	ISSUED FOR SPA
1	2017-12-01	ISSUED FOR COORDINATION

NO.	DATE	DESCRIPTION
SEAL:		



CONSULTANT:

PROJECT: CIOT SHOWROOM & WAREHOUSE 2510 WALKLEY ROAD OTTAWA, ONTARIO

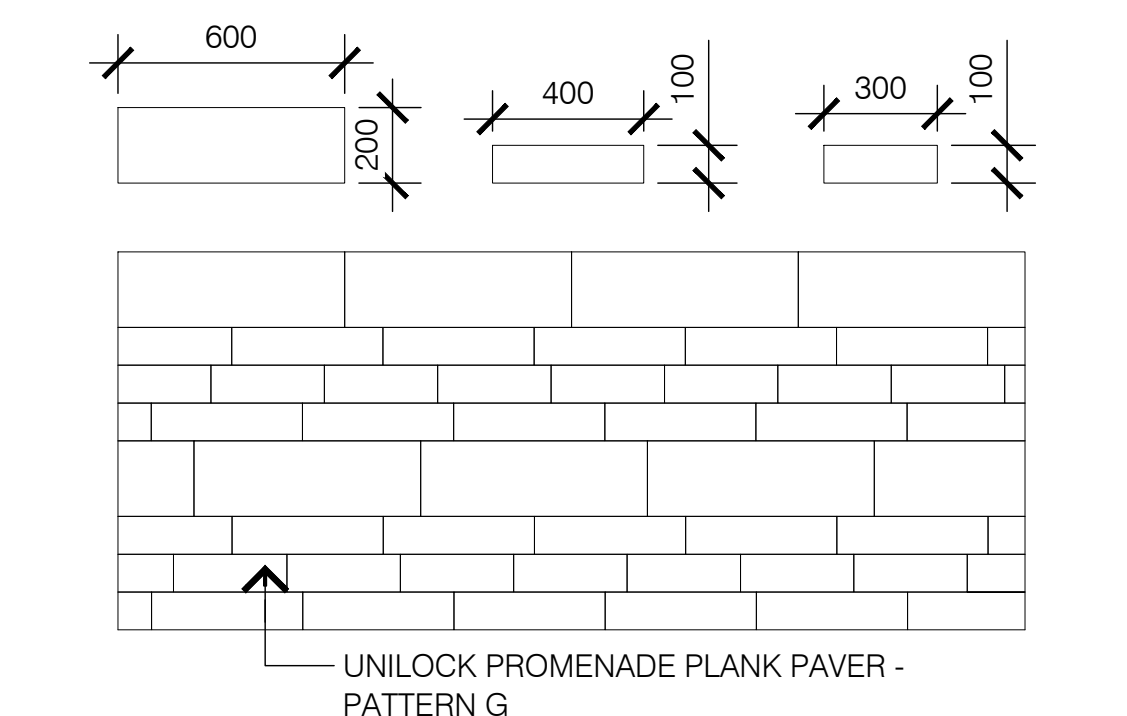
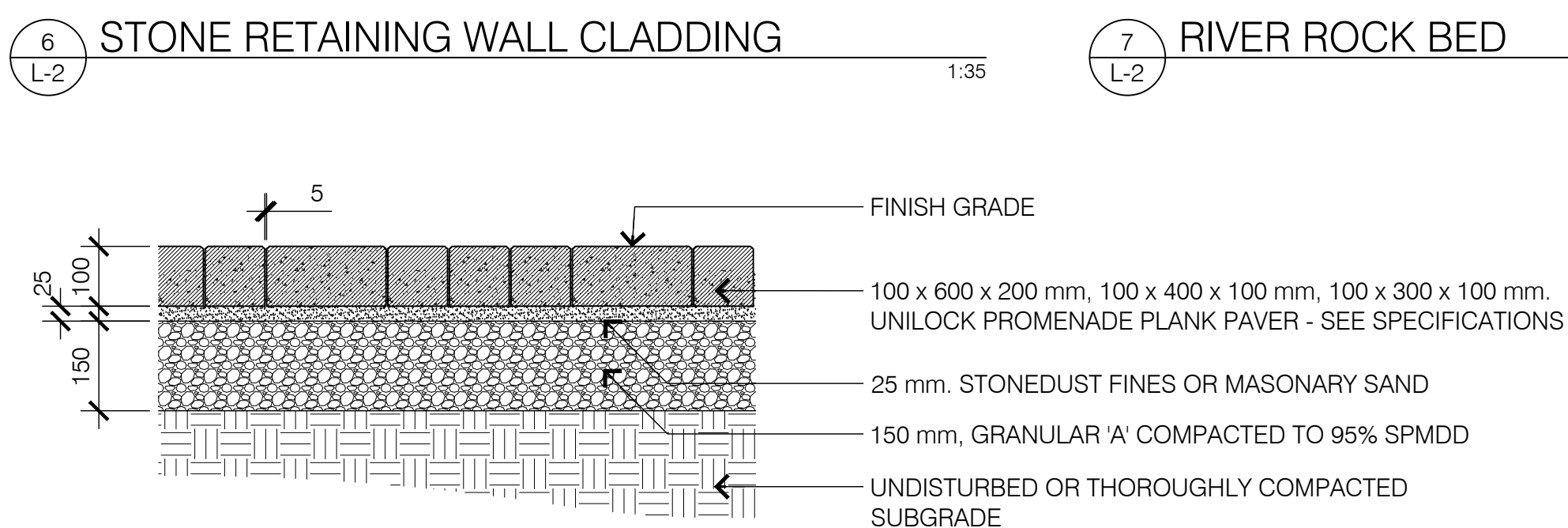
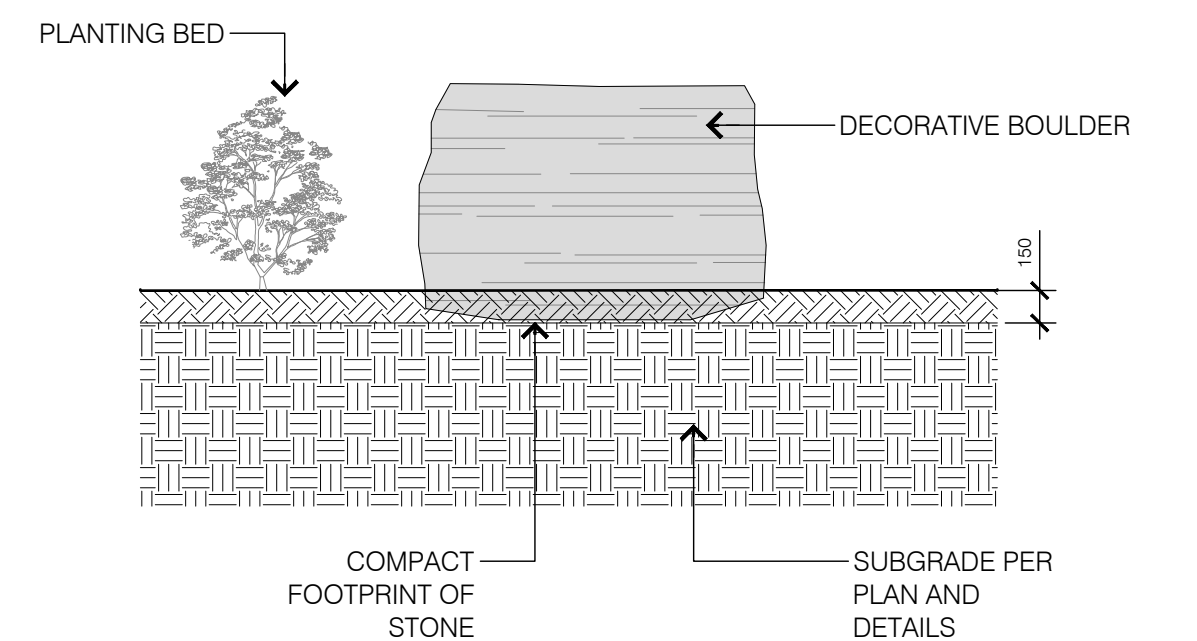
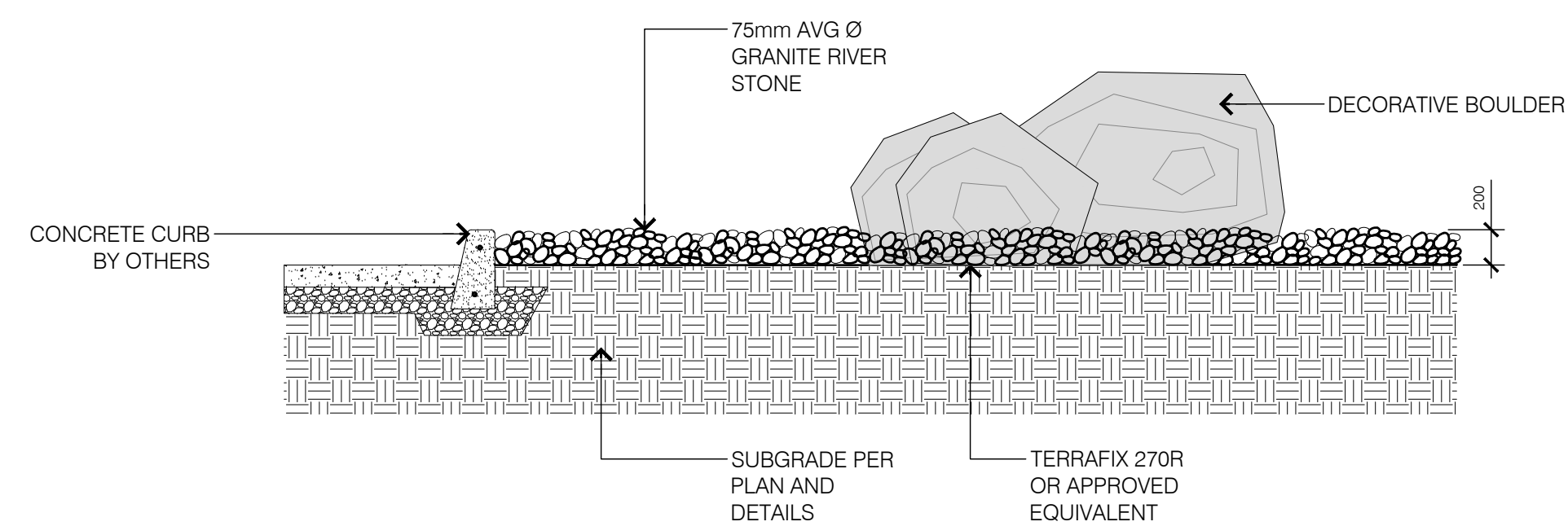
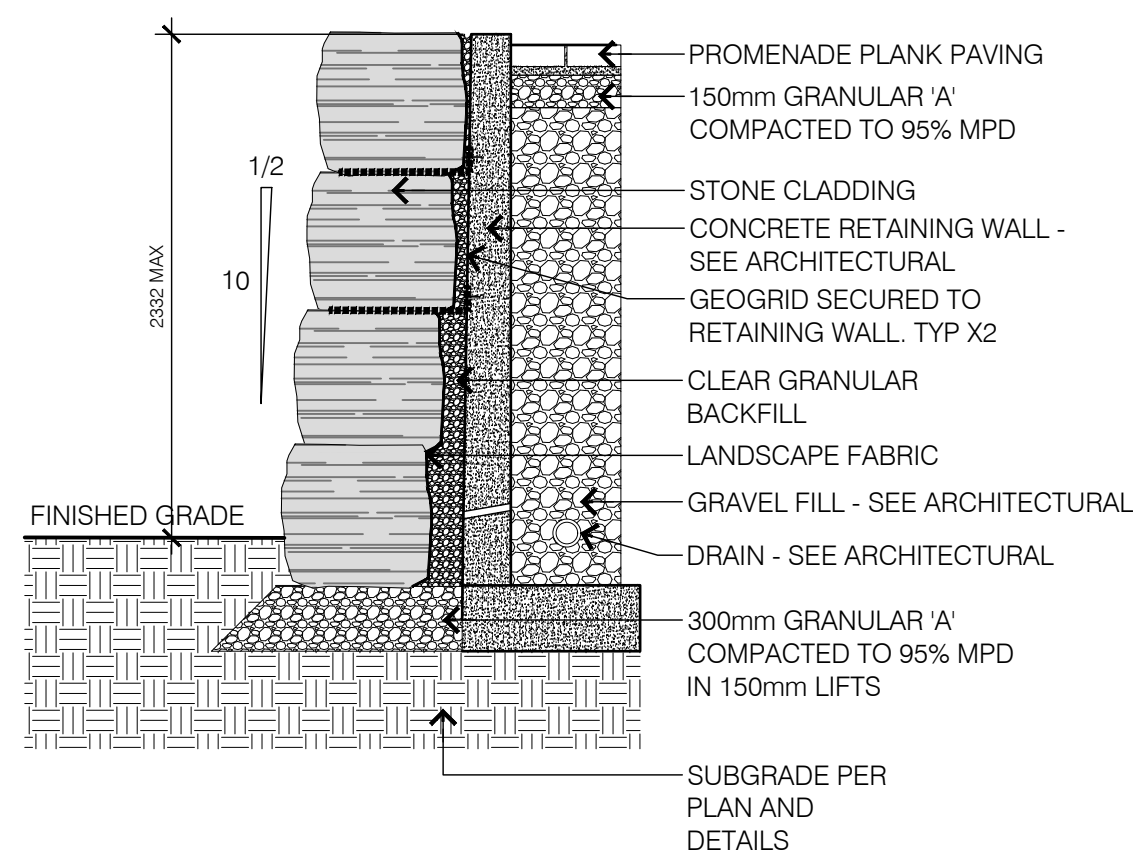
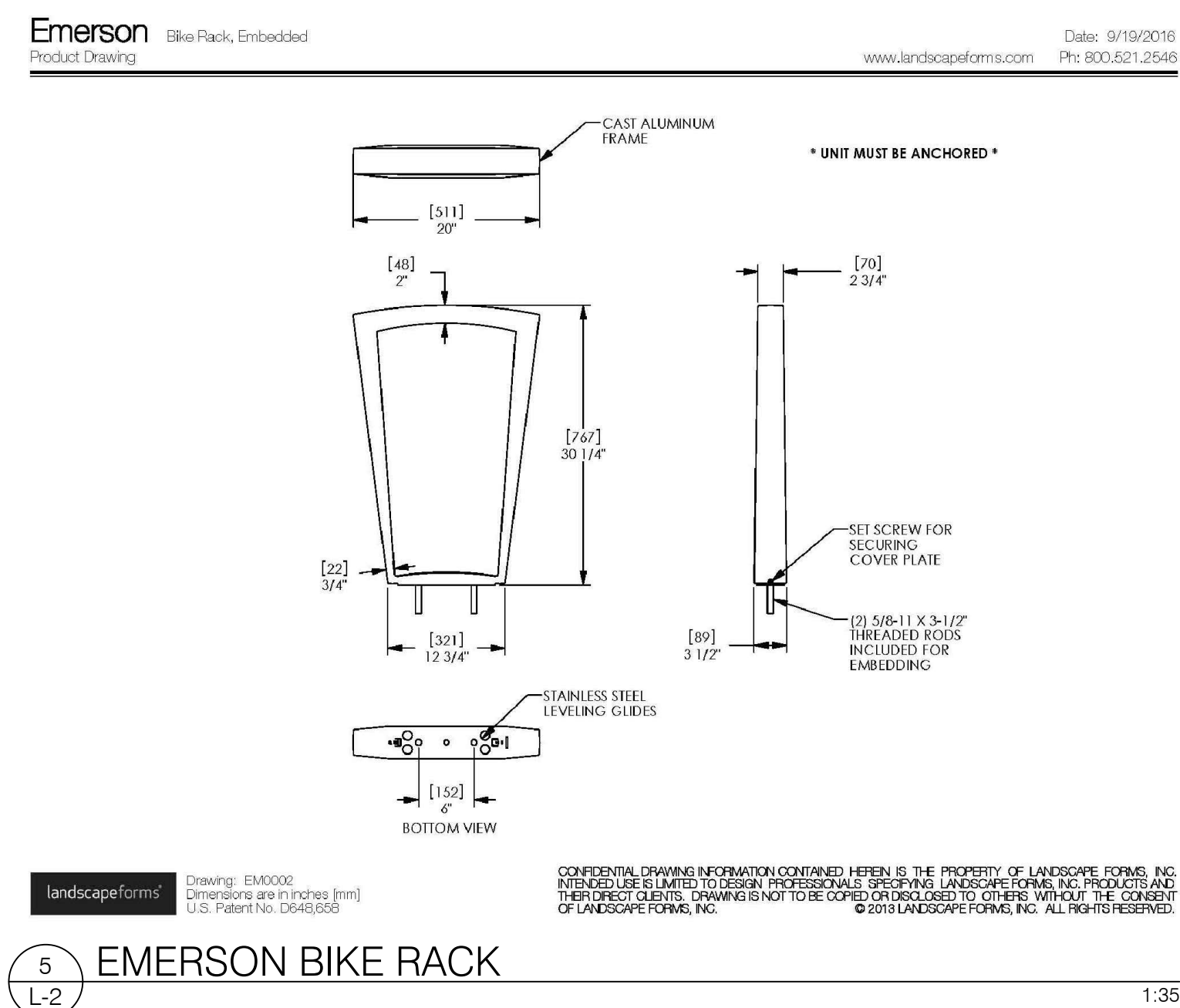
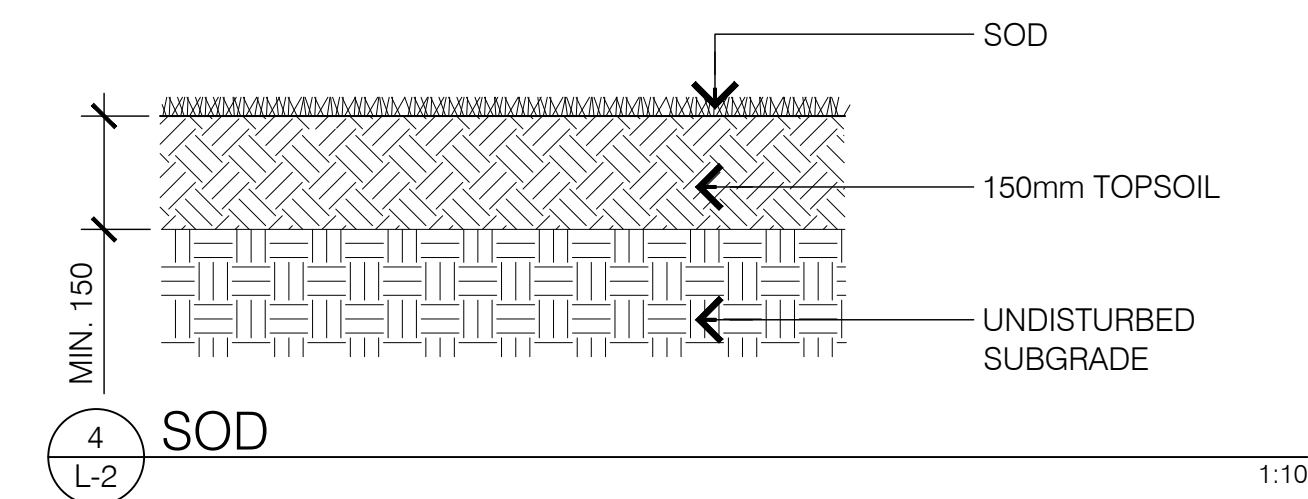
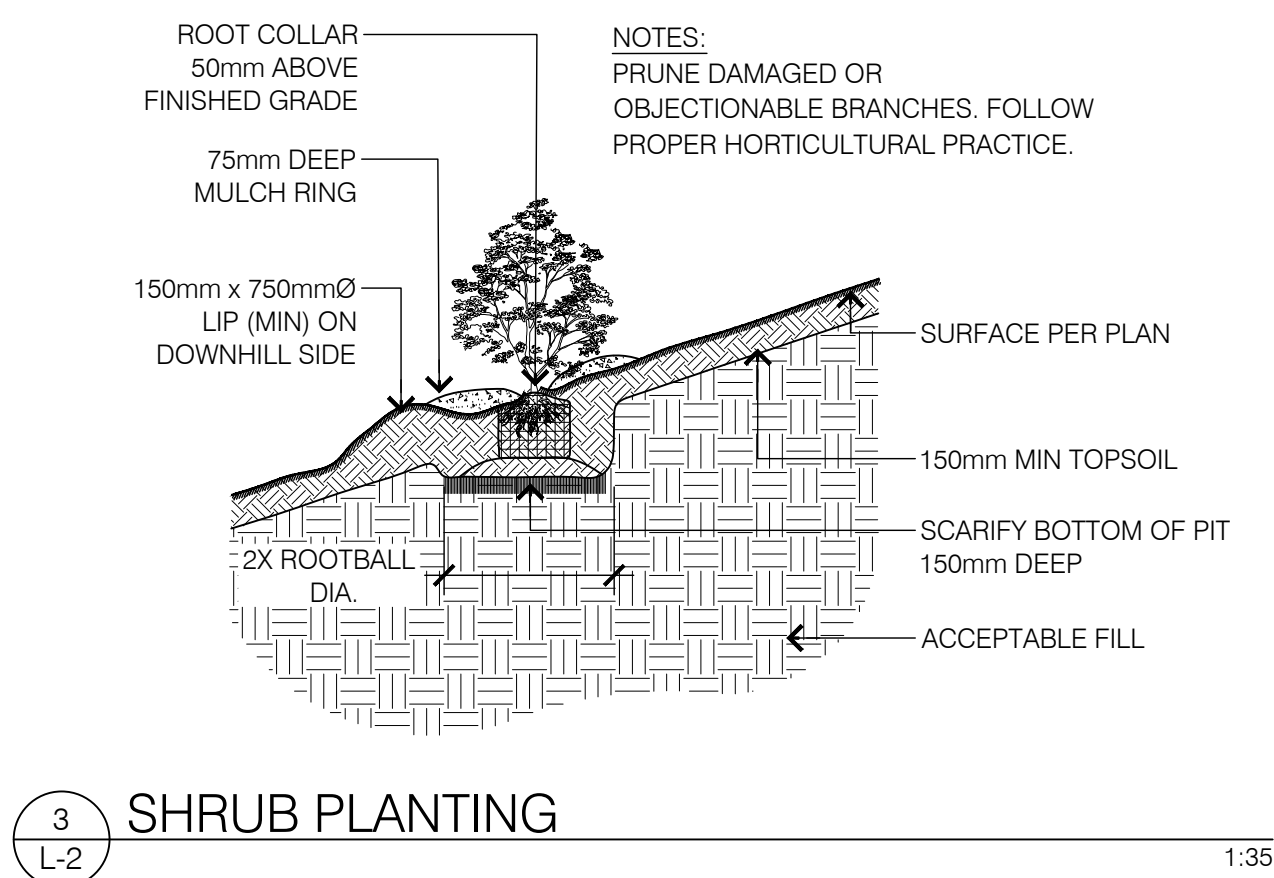
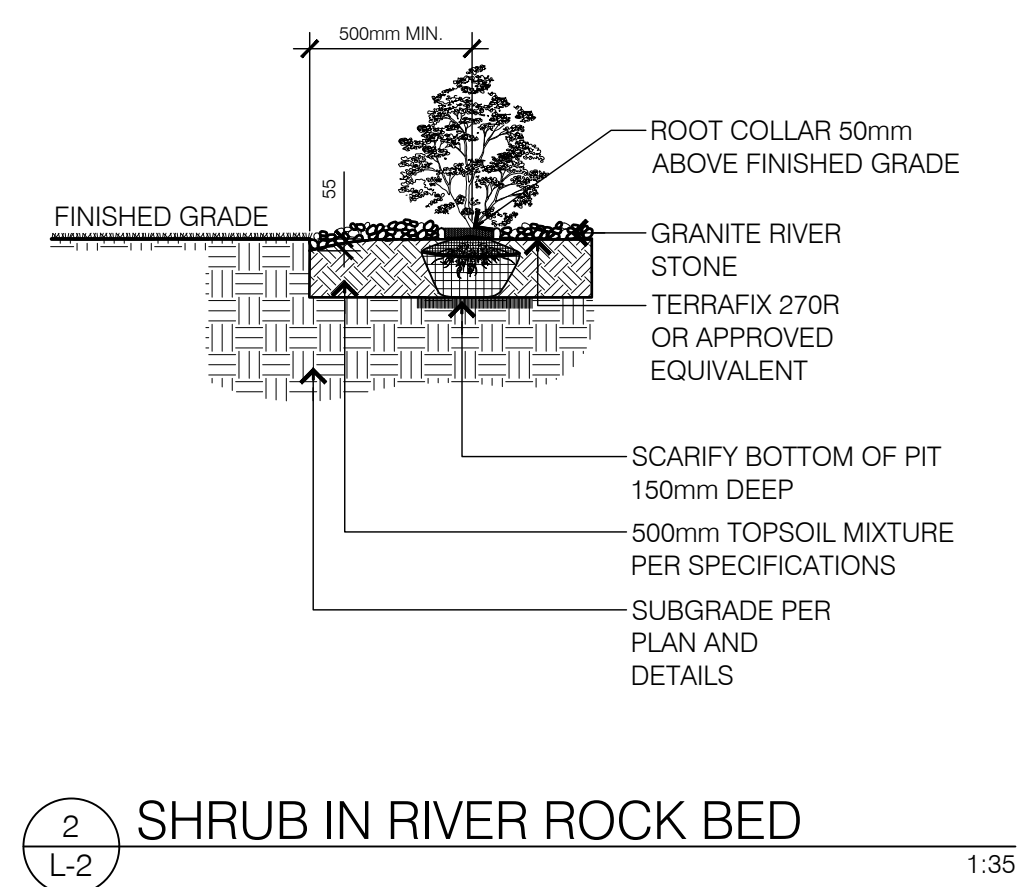
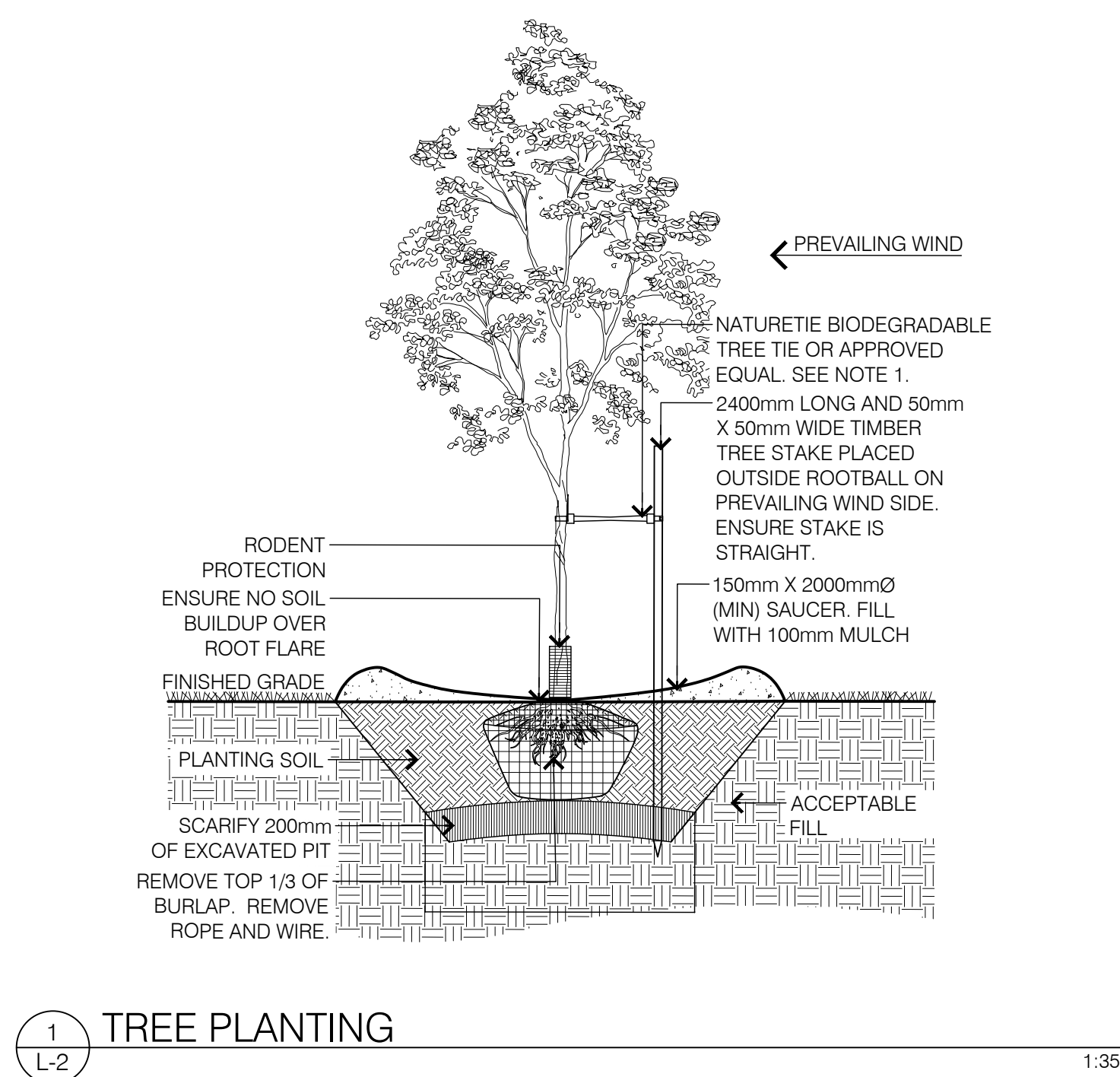
DRAWING TITLE: LANDSCAPE PLAN

DATE: 2018/07/27 SCALE: AS NOTED DRAWN BY: RP / JC LA PROJECT NO. 17686-1

DRAWING NO.:

L-1







### L1-1 GENERAL NOTES

1. All general site information and conditions complied from architect's and engineer's plans and surveys.
2. Do not scale this drawing.
3. Report any discrepancies prior to commencing work. No responsibility is born by the Landscape Architect for unknown subsurface conditions.
4. Reinstate all areas and items damaged as a result of construction activities to the satisfaction of the Landscape Architect.
5. Drawing may not be used for construction until signed by Landscape Architect as issued for construction.
6. The accuracy of the position of utilities is not guaranteed.
7. Individual utility co. must be contacted for confirmation of utility existence and location prior to digging.
8. This drawing is an instrument of service and requires the permission of the Landscape Architect for use. Copyright is reserved by the Landscape Architect, David M. Lashley.

**L1-1 LANDSCAPE NOTES**

1. Plant material shall be No.1 Grade and shall comply with the Metric Guide Specifications for Nursery stock (latest edition), published by Canadian Nursery Trades Association.
2. Plant substitutions shall not be permitted unless approved by the Landscape Architect.
3. Obtain approval of planting prior to digging.
4. Topsoil shall be garden soil mixture sandy loam with min. 5% organic matter and peat moss added at ratio of 1:10. Topsoil to be approved by Landscape Architect.

3	2018-08-28	REVISED SPA SUBMISSION
2	2018-01-31	ISSUED FOR SPA
1	2017-11-17	ISSUED FOR COORDINATION

NO.	DATE	DESCRIPTION
SEA		<p>NORTH:</p> 



**LASHLEY  
+ ASSOCIATES**

LANDSCAPE ARCHITECTURE  
AND SITE ENGINEERING

200 860 GLADSTONE AVENUE  
OTTAWA, ON K1Y 3E8

T 613 233 8679  
F 613 232 4051

W [lashley.ca.com](http://lashley.ca.com)  
E [info@lashley.ca.com](mailto:info@lashley.ca.com)

CONSULTANT:

**PROJECT:**

**CIOT**  
**SHOWROOM & WAREHOUSE**  
2510 WALKLEY ROAD  
OTTAWA, ONTARIO

**DRAWING TITLE:** DETAILS

<b>DATE:</b>	2018/07/27	<b>DRAWING NO.:</b>    <b>L-2</b>
<b>SCALE:</b>	AS NOTED	
<b>DRAWN BY:</b>	RP / JC	
<b>LA PROJECT NO.</b>	17686-1	

**L-2**