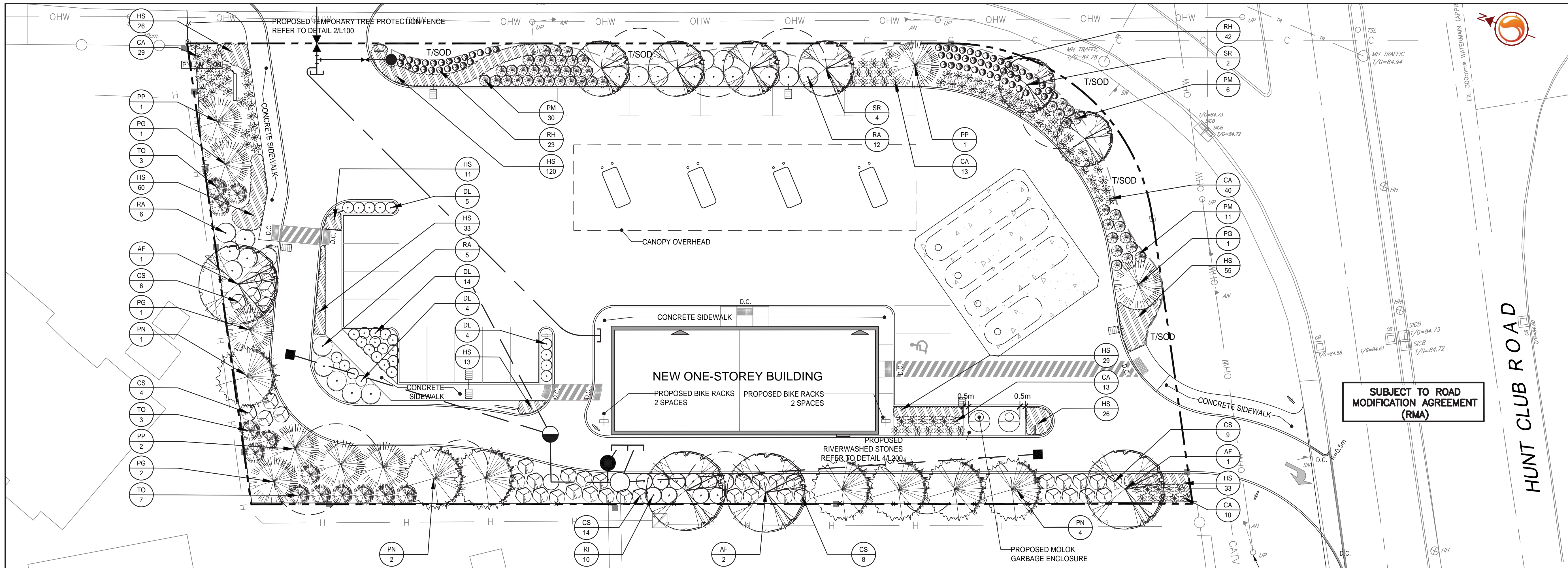


Copyright Reserved

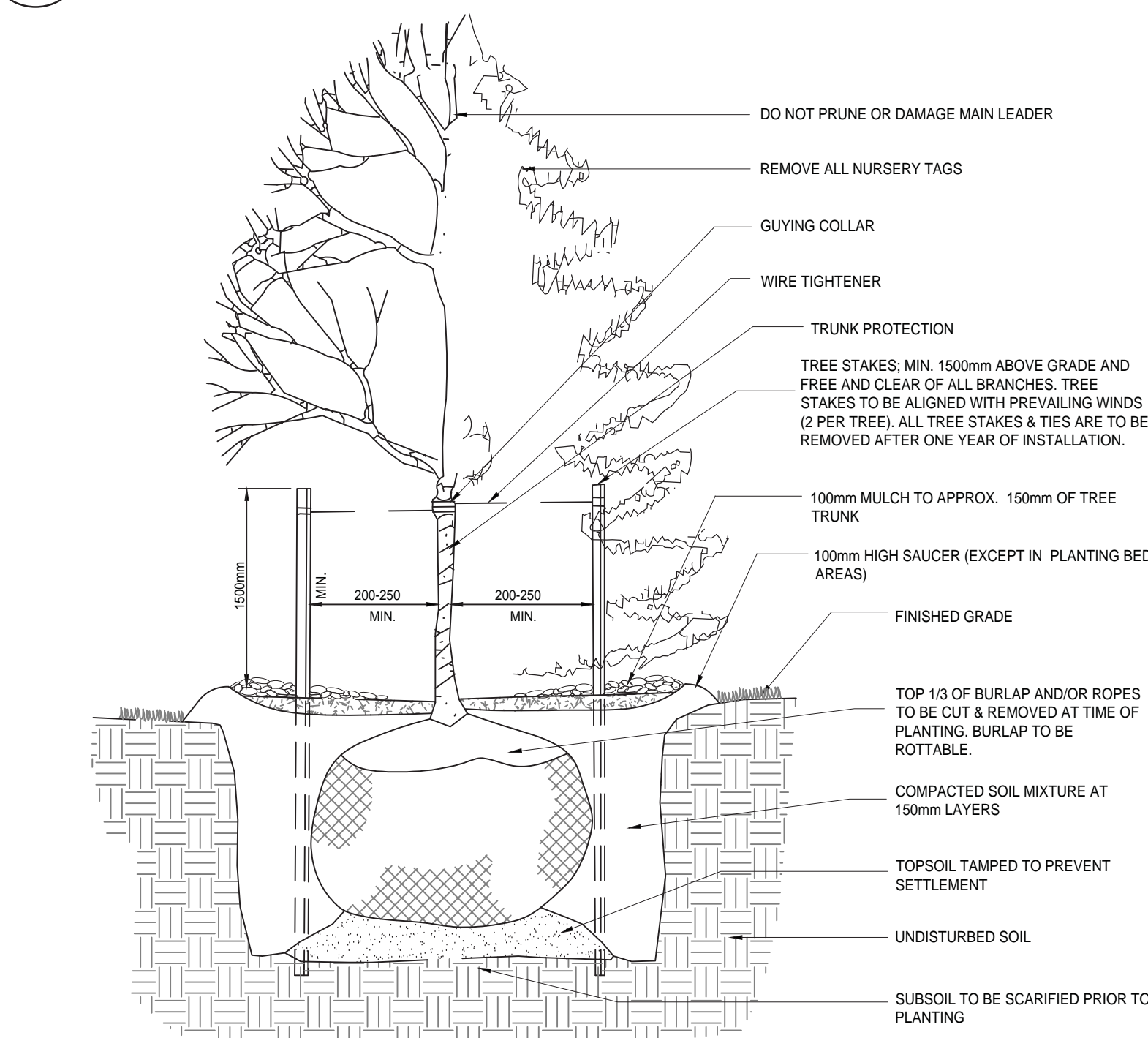
The Contractor shall verify and be responsible for all dimensions. DO NOT scale the drawing - any errors or omissions shall be reported to Stantec without delay. The Copyrights to all designs and drawings are the property of Stantec. Reproduction or use for any purpose other than that authorized by Stantec is forbidden.

Legend

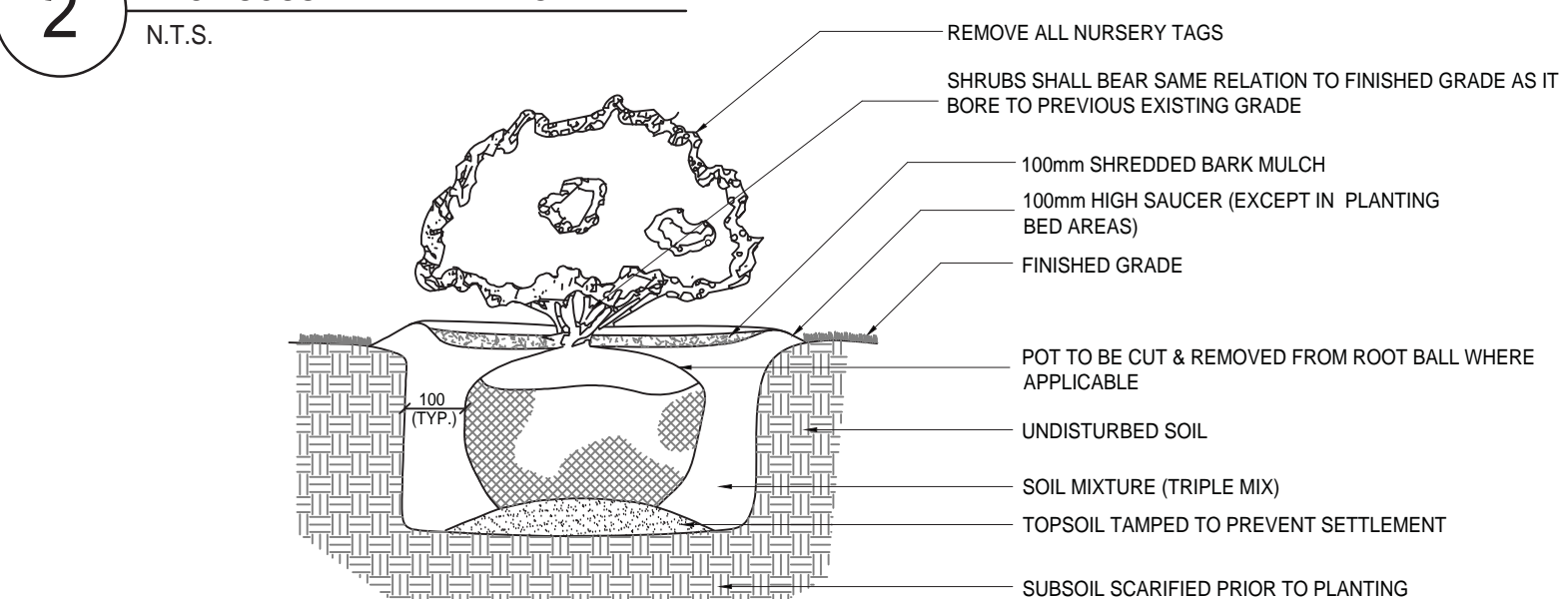
- PROPOSED DECIDUOUS TREE
- PROPOSED CONIFEROUS TREES
- PROPOSED DECIDUOUS SHRUBS
- PROPOSED CONIFEROUS SHRUBS
- PROPOSED ORNAMENTAL GRASSES
- PROPOSED PERENNIAL BED PLANTING
- PROPOSED PLANTING BED
- PLANT SPECIES/QUANTITY KEY
- TOPSOIL AND SOD
- PROPERTY LINE
- LIGHT STANDARD



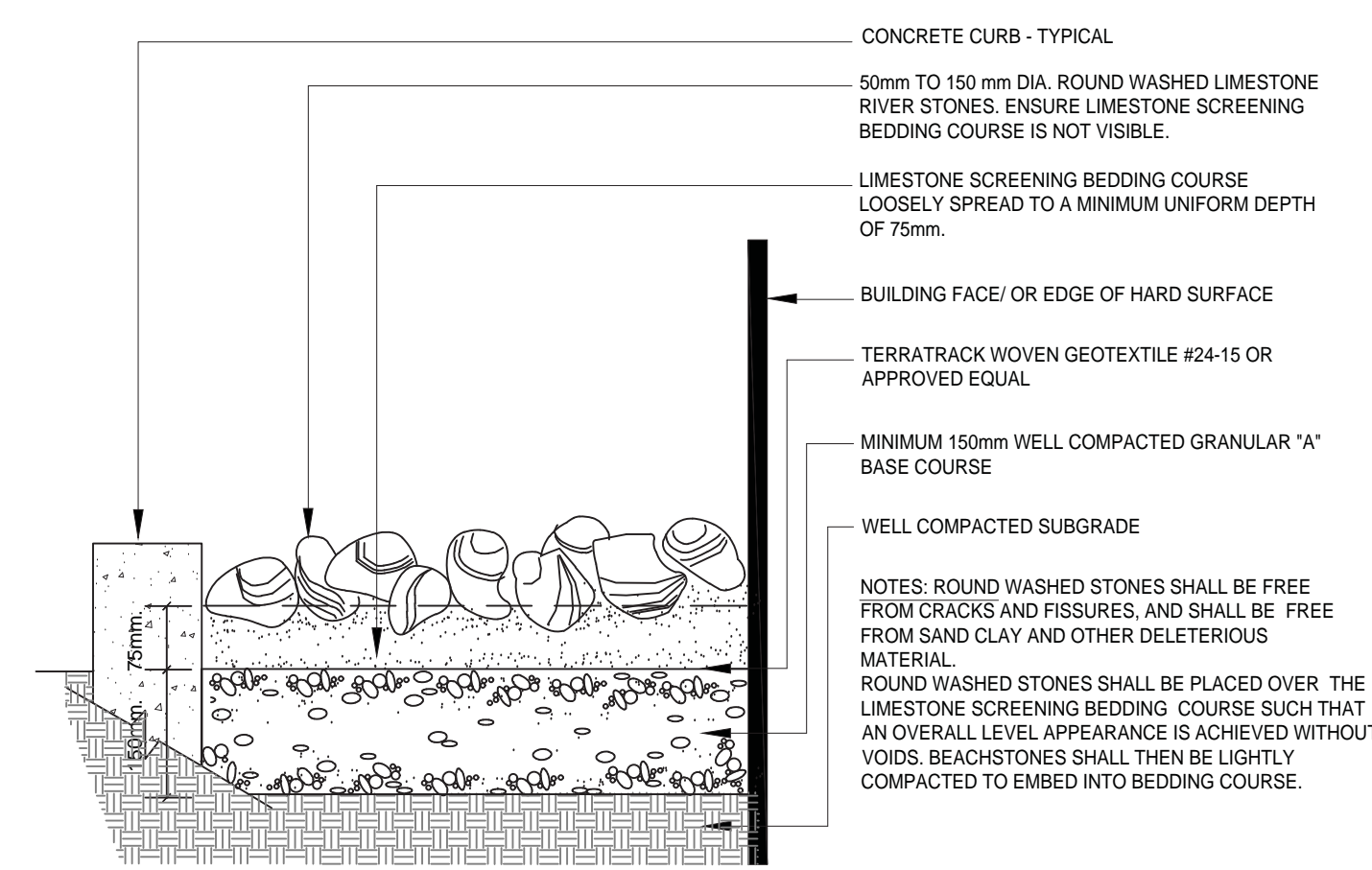
1 LANDSCAPE PLAN
1:200



2 DECIDUOUS TREE PLANTING DETAIL
N.T.S.



3 SHRUB AND PERENNIAL PLANTING DETAIL
N.T.S.



4 RIVERSTONE DETAIL
N.T.S.

PLANT LIST

QTY.	KEY	BOTANICAL NAME	COMMON NAME	SIZE	REMARKS
CONIFEROUS TREES - REFER TO DETAIL 2/L102					
7	PN	<i>Pinus nigra</i>	Austrian Pine	2000mm ht.	W.B; Plant at 5.5m o/c
5	PG	<i>Picea glauca</i>	White Spruce	2000mm ht.	W.B; Plant at 4.5 o/c
4	PP	<i>Picea pungens</i>	Colorado Spruce	2000mm ht.	W.B; Plant at 4.5m o/c
13	TO	<i>Thuja occidentalis</i>	Eastern White Cedar	2000mm ht.	W.B; Plant at 2.0m o/c
DECIDUOUS TREES - REFER TO DETAIL 2/L102					
4	AF	<i>Acer x freemanii</i> 'Jeffers Red'	Autumn Blaze Maple	60mm Gal	W.B; Plant at 7.75m o/c
6	SR	<i>Syringa reticulata</i> 'Ivory Silk'	Ivory Silk Tree Lilac	50mm Gal	W.B; Plant at 7.0m o/c
CONIFEROUS SHRUBS - REFER TO DETAIL 3/L102					
47	PM	<i>Pinus mugo</i> 'Slowmound'	Slowmound Mugo Pine	40cm sp.	C.G; Plant at 1000mm o/c
DECIDUOUS SHRUBS - REFER TO DETAIL 3/L102					
41	CS	<i>Cornus alba</i> 'Sibirica'	Redbark Dogwood	60cm ht.	C.G; Plant at 1500mm o/c
27	DL	<i>Diervilla lonicera</i>	Bush Honeysuckle	50cm ht.	C.G; Plant at 1000mm o/c
23	RA	<i>Rhus aromatica</i> 'Gro-Low'	Gro-Low Fragrant Sumac	50cm ht.	C.G; Plant at 1800mm o/c
10	RI	<i>Ribes aureum</i>	Golden Currant	50cm ht.	C.G; Plant at 1500mm o/c
65	RH	<i>Rosa</i> 'Henry Hudson'	Henry Hudson Rose	2 Gal	C.G; Plant at 600mm o/c
PERENNIALS / ORNAMENTAL GRASSES - REFER TO DETAIL 3/L102					
105	CA	<i>Calamagrostis acutiflora</i> 'Karl Foerster'	Karl Foerster Feather Reed Grass	1 Gal	Potted; Plant at 1000mm o/c
406	HS	<i>Hemerocallis</i> 'Stella D'Oro'	Stella D'Oro Daylily	1 Gal.	Potted; Plant at 450mm o/c

LANDSCAPE NOTES

- REFER TO TREE PRESERVATION PLAN FOR INFORMATION RELATED TO TREE REMOVAL / TREE PROTECTION DIRECTIONS. EXISTING VEGETATED AREAS ON ADJACENT PROPERTIES SHALL REMAIN AND BE PROTECTED BEFORE, DURING, AND AFTER CONSTRUCTION.
- NO VEGETATION REMOVAL SHALL OCCUR BETWEEN MAY 1 AND JULY 15 OF ANY YEARS TO PROTECT BREEDING MIGRATORY BIRDS, AS WELL AS AT RISK BAT SPECIES. SHALL TREE REMOVAL DURING THIS PERIOD BY UNAVOIDABLE. THE CONTRACTOR IS REQUIRED TO CONDUCT A NESTING SURVEY BY A REGISTERED PROFESSIONAL AVIAN BIOLOGIST TO IDENTIFY AND ENSURE NO NESTING ACTIVITY ARE PRESENT. TREE REMOVAL WILL BE ALLOWED WITHIN FIVE (5) DAYS OF CONDUCTING THE SURVEY.
- REFER TO "LOT GRADING, DRAINAGE, SEDIMENT & EROSION CONTROL PLAN" FOR PROPOSED GRADING.
- REFER TO "SITE SERVICING & UTILITY PLAN" FOR LOCATION AND DETAILS OF PROPOSED UNDERGROUND SERVICES.
- SOD SHALL BE KENTUCKY BLUEGRASS SOD INSTALLED OVER 135mm OF TOPSOIL. SOD SHALL BE INSTALLED THROUGHOUT WITHIN LIMIT OF WORK AND IN ALL DISTURBED AREAS OUTSIDE THE LIMIT OF WORK. SOD SHALL BE INSTALLED AS PER OPSS 803.
- CONTRACTOR TO LOCATE AND STAKE ALL UTILITIES PRIOR TO ANY WORK ON THE SITE. DO NOT PLANT DIRECTLY ABOVE UNDERGROUND UTILITIES. REPORT ANY DISCREPANCIES TO THE LANDSCAPE ARCHITECT FOR DIRECTION.
- MAINTAIN A MINIMUM DISTANCE OF 2.0m FROM ALL UNDERGROUND UTILITIES.
- NO TREES SHALL BE PLANTED UNDER OVERHEAD WIRES.
- THE LANDSCAPE ARCHITECT MAY ADJUST THE LOCATION OF TREES PRIOR TO PLANTING TO MINIMIZE CONFLICTS WITH UTILITIES, DRIVEWAYS AND INTERSECTION VISIBILITY.
- CONTRACTOR SHALL SUPPLY ALL MATERIALS IN QUANTITIES SUFFICIENT TO COMPLETE WORK SHOWN ON THESE DRAWINGS. ANY DISCREPANCIES SHALL BE REPORTED TO THE LANDSCAPE ARCHITECT FOR DIRECTION.
- DO NOT MAKE SUBSTITUTIONS OF MATERIALS, PRODUCTS OR QUANTITIES WITHOUT PRIOR WRITTEN PERMISSION OF THE LANDSCAPE ARCHITECT.
- THE CONTRACTOR TO MAKE GOOD TO THE SATISFACTION OF THE LANDSCAPE ARCHITECT ANY AREAS DAMAGED BY THE WORK.
- UPON THE COMPLETION OF WORK EACH DAY, REMOVE ALL DEBRIS, GARBAGE AND SURPLUS MATERIALS FROM THE SITE. KEEP THE SITE CLEAN AND USEABLE AT ALL TIMES.
- ALL WORKMANSHIP AND MATERIALS (INCLUDING PLANTS) TO BE GUARANTEED FOR ONE FULL YEAR FOLLOWING FINAL ACCEPTANCE OF THE PROJECT.
- THE CONTRACTOR SHALL REMOVE ALL T-BAR AND WOODEN TREE STAKES PRIOR TO ASSUMPTION BY THE OWNER.
- AT THE TIME OF INSPECTION FOR ACCEPTANCE ALL TREE PITS SHALL BE CULTIVATED, FREE OR WEEDS, LEAVES, BROKEN BRANCHES AND DEBRIS.

PLANTING NOTES

- THE DETAILS ON THIS SHEET DO NOT REPRESENT ANY PARTICULAR SPECIES.
- TREES AND SHRUBS AS INDICATED IN THE DETAILS REPRESENT BOTH CONIFEROUS AND DECIDUOUS SPECIES.
- MATERIAL PLANTED IN GROUP SHALL BE SET IN CONTINUOUS PLANTING BEDS.
- CENTRE LINE OF SHRUBS SHALL NOT BE CLOSER THAN 2.4m FROM BUILDING FACE TO PROTECT BUILDING FOOTINGS AND INSULATION.
- PRUNING - TO SUIT SPECIES - PRUNE BRANCHES BY 1/3 TO REMOVE DAMAGED OR OBJECTABLE BRANCHES FOLLOWING PROPER HORTICULTURAL PRACTICE. DO NOT PRUNE LEADERS.
- FIRMLY COMPACT BACKFILLED PLANTING MIXTURE TO ELIMINATE AIR POCKETS OR PREVENT SETTLEMENT.
- PLANTING MATERIAL QUALITY STANDARDS:
 - ALL PLANT MATERIALS TO CONFORM TO THE CANADIAN NURSERY LANDSCAPE ASSOCIATION FOR VARIETY, SIZE AND CONDITION;
 - PLANT MATERIAL COLLECTED FROM WILD SOURCES WILL NOT BE ACCEPTED;
 - LANDSCAPE ARCHITECT RESERVES THE RIGHT TO REFUSE ACCEPTANCE OF ANY PLANT DISPLAYING POOR GROWTH HABITS, INJURY OR DISEASE;
 - ANY PLANTS THAT DO NOT CONFORM TO THE ABOVE STANDARDS WILL BE PROMPTLY REMOVED FROM THE SITE BY THE CONTRACTOR AND REPLACED WITH MATERIAL OF ACCEPTABLE QUALITY AT NO ADDITIONAL COST TO THE PROJECT.

OWNER:
2520333 ONTARIO INC.
5 MILLCREEK COURT, NEPEAN, ON K2G 6Y7

APPLICANT:
STANTEC CONSULTING INC.
1331 CLYDE AVENUE, OTTAWA ON K2C 3G4

SURVEYOR:
STANTEC GEOMETRICS LTD.
1331 CLYDE AVENUE, OTTAWA, ON K2C 3G4

ARCHITECT:
MICROBE ARCHITECTS + INTERIOR DESIGNERS
66 QUEEN STREET, OTTAWA, ON K1P 5C6

LANDSCAPE ARCHITECT:
STANTEC CONSULTING INC.

CIVIL ENGINEER:
STANTEC CONSULTING INC.

NO.	REVISION	DATE	BY	APP'D
4	REVISED AS PER CITY COMMENTS	LZ	ILL	18.08.31
3	REVISED SITE PLAN	AMO	ILL	18.02.02
2	REVISED SITE PLAN	AMO	ILL	17.11.07
1	ISSUED FOR COMMENTS	MS	ILL	17.04.11
0	ISSUED FOR SITE PLAN CONTROL APPLICATION	MS	ILL	17.04.06

Revision	By	App'd	YY MM DD
File Name: 160401302_LB.dwg	MS	ILL	17.04.05
Permit-Seal	Dwn	Chkd	Dgn.



Client/Project
2520333 ONTARIO INC.

PROPOSED COMMERCIAL DEVELOPMENT
3500 HAWTHORNE ROAD
OTTAWA, ON

Title
LANDSCAPE PLAN

Project No. 160401302
Drawing No. L200
Scale 1:200
Sheet 2 of 2

Revision 4
#17715