

LANDSCAPE LEGEND:			
	EXISTING TREE		PLANTING BED
	PROPOSED DECIDUOUS TREE		RIVERSTONE / PEA GRAVEL
	PROPOSED SHRUBS / ORNAMENTAL GRASSES		TERRACE/ENTRANCE TILE PAVERS
	SPECIES (SEE PLANT LIST)		BOULEVARD UNIT PAVERS
	QUANTITY		PRECAST TILE PAVERS ON PEDESTAL SYSTEM
	PLANTER / TERRACE WALLS		GARAGE ACCESS UNIT PAVERS
	WOOD SCREEN FENCE		CONCRETE WALKWAYS
	LANDSCAPE BOULDER		

NOT FOR  
CONSTRUCTION

No.	REVISION	DATE	BY
5.	ISSUED FOR SITE PLAN CONTROL	JUL 13/18	SC
4.	ISSUED FOR PRICING	APR 30/18	SC
3.	ISSUED FOR REVIEW - PLANTER REVISIONS	MAR 20/18	SC
2.	REVISED AS PER CITY COMMENTS	MAR 2/18	SC
1.	ISSUED FOR SPA	NOV 1/17	SC

SCALE

1:150

0 2 4 6

DESIGN

SC

CHECKED

RGJ

DRAWN

ML

CHECKED

SC

APPROVED

RGJ

FOR REVIEW ONLY



LOCATION  
CITY OF OTTAWA  
115 ECHO DRIVE

DRAWING NAME  
LAYOUT & SURFACING PLAN

PROJECT No.

115105-00

REV #5

DRAWING No.

115105-L1

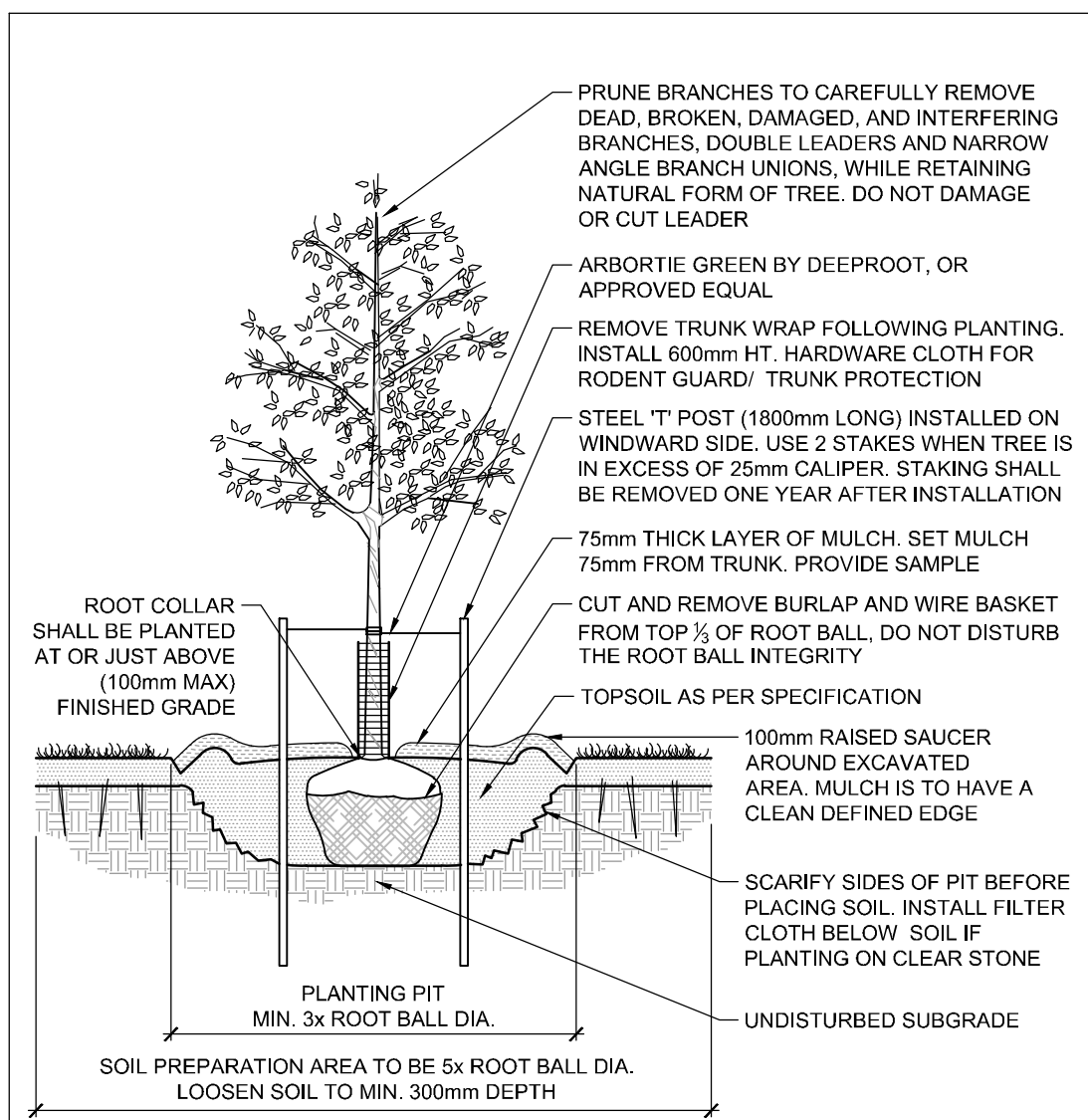
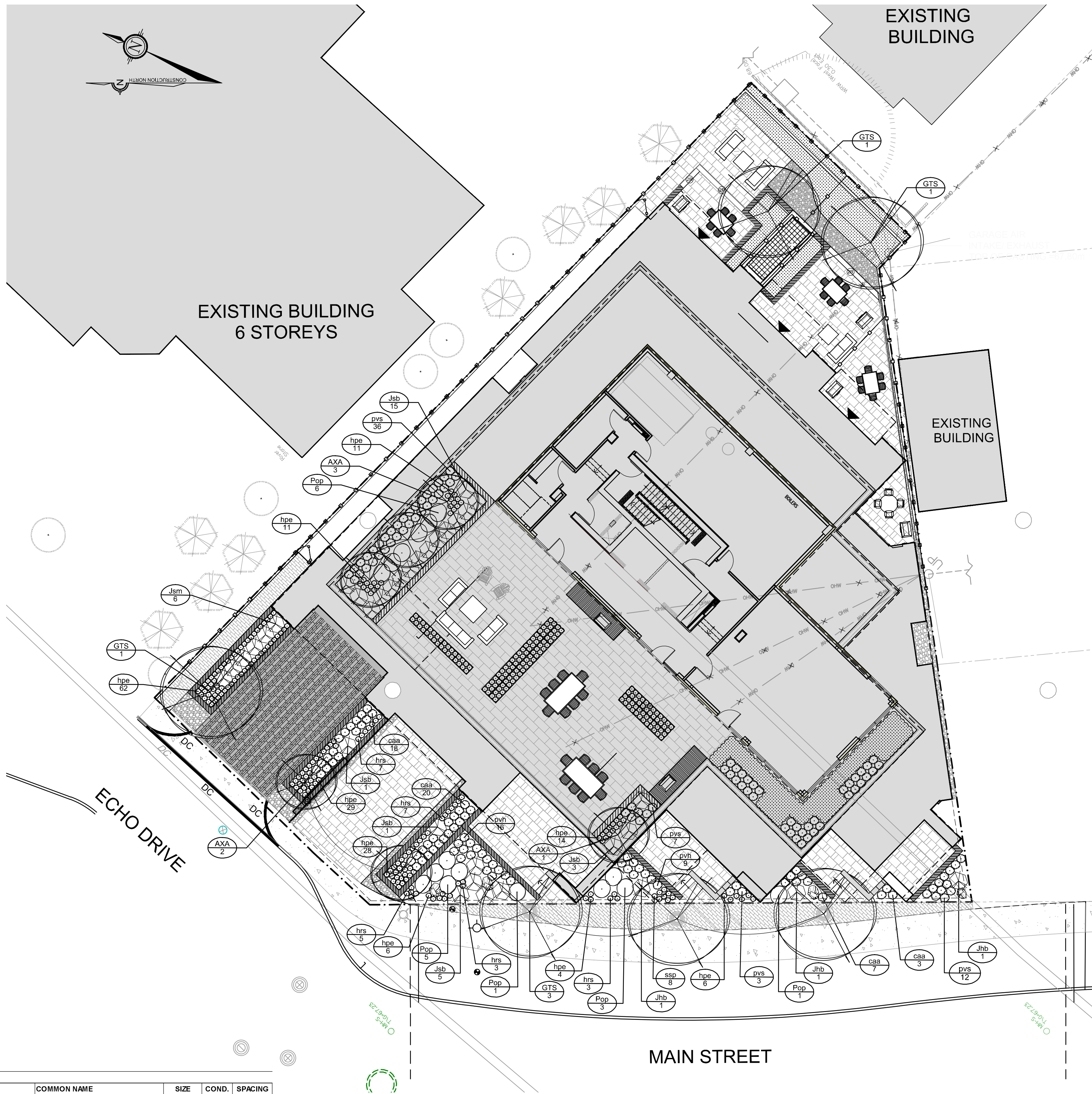
NOTE:  
THE POSITION OF ALL POLE LINES, CONDUITS, WATERMANS, SEWERS AND OTHER UNDERGROUND AND OVERGROUND UTILITIES AND STRUCTURES IS NOT NECESSARILY SHOWN ON THE CONTRACT DRAWINGS, AND WHERE SHOWN, THE ACCURACY OF THE POSITION OF SUCH UTILITIES AND STRUCTURES IS NOT GUARANTEED. BEFORE STARTING WORK, DETERMINE THE EXACT LOCATION OF ALL SUCH UTILITIES AND STRUCTURES AND ASSUME ALL LIABILITY FOR DAMAGE TO THEM.

M:\2015\115105\CAD\Landscaping\Plan\115105-L1.dwg, L1, Jul 16, 2018, 2:06pm, m.moulam

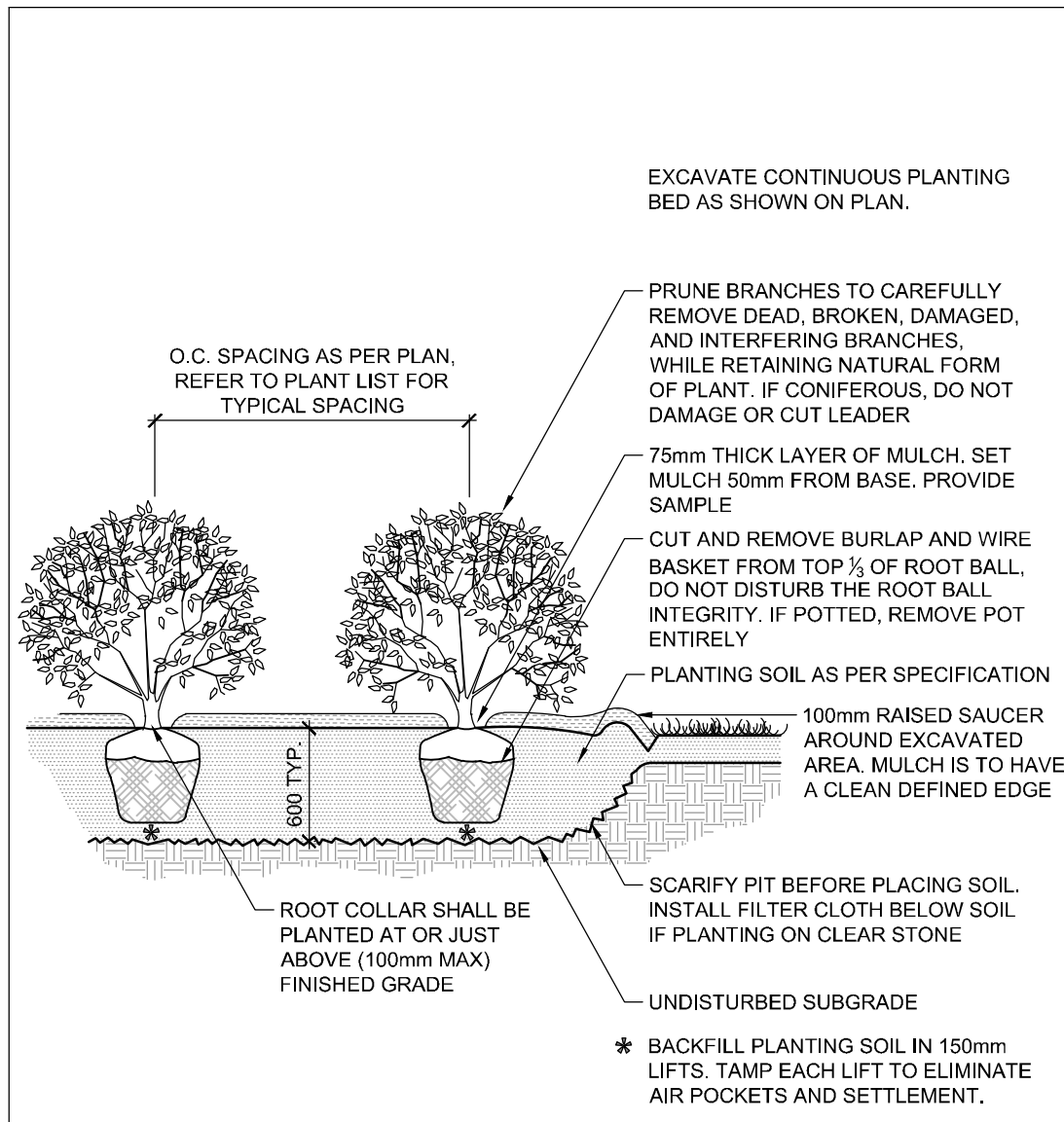
PLANNING, INFRASTRUCTURE AND ECONOMIC DEVELOPMENT DEPARTMENT, CITY OF OTTAWA

#D07-12-17-0152

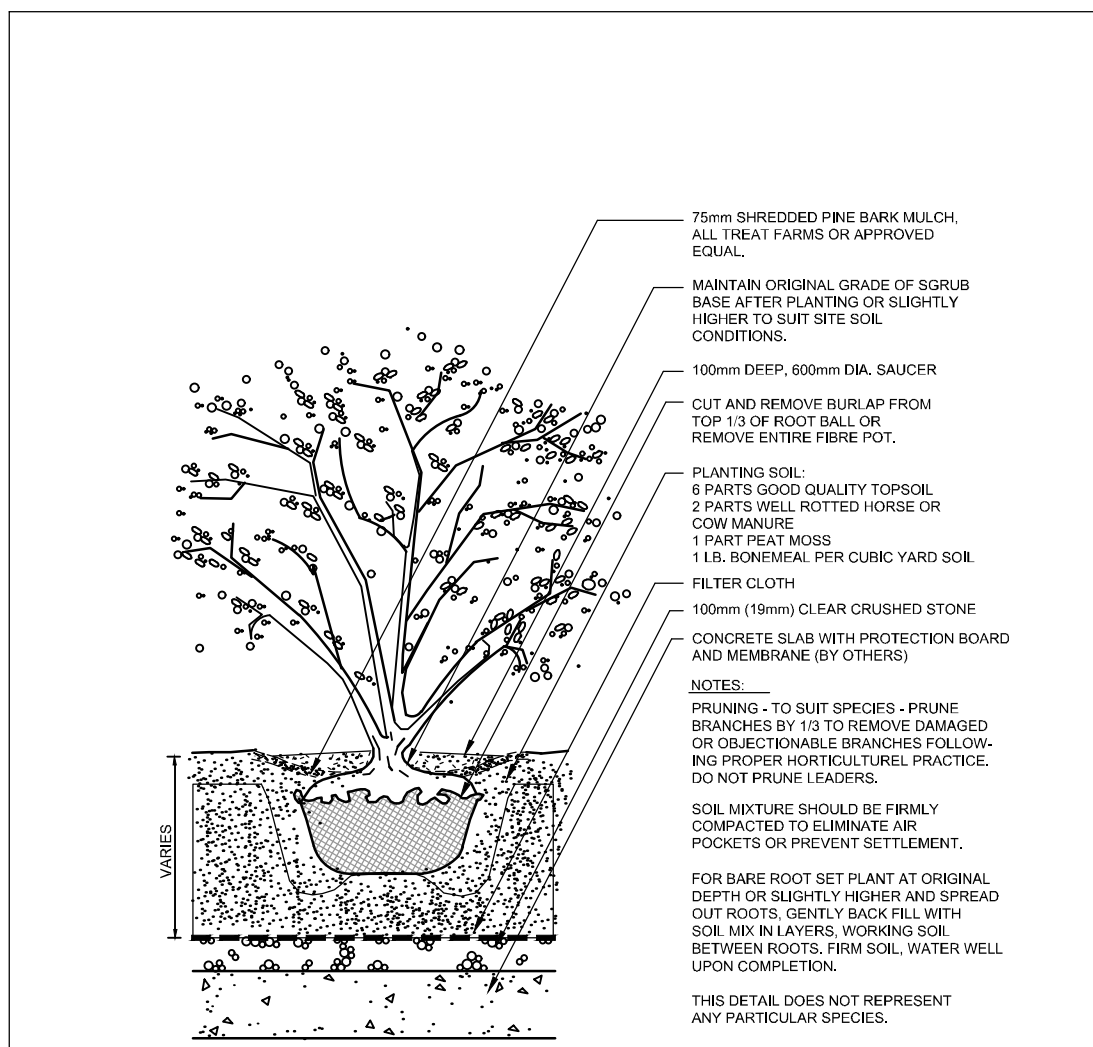




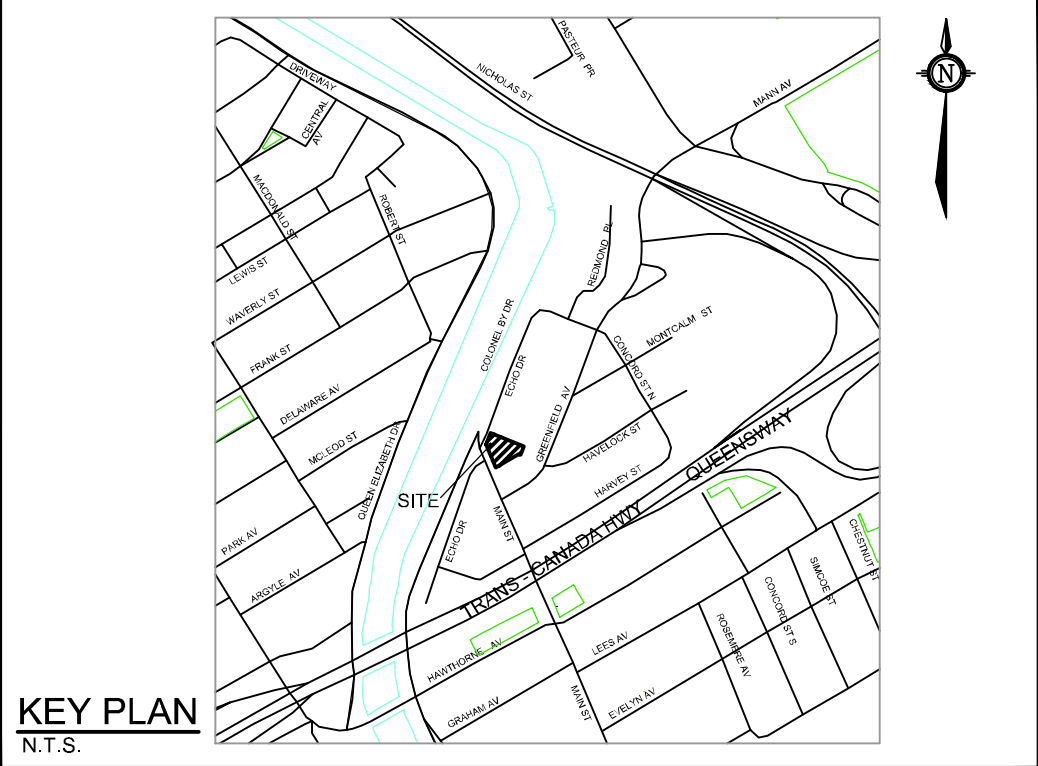
DECIDUOUS TREE



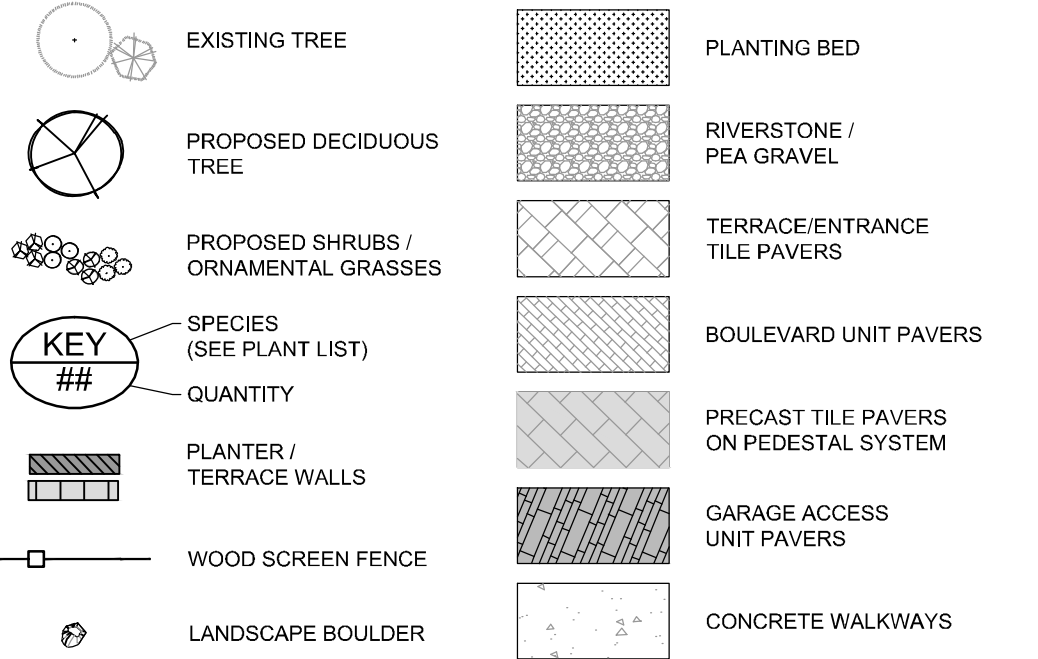
SHRUB/PERENNIAL



SHRUB/PERENNIAL ON SLAB



LANDSCAPE LEGEND:



PLANTING NOTES

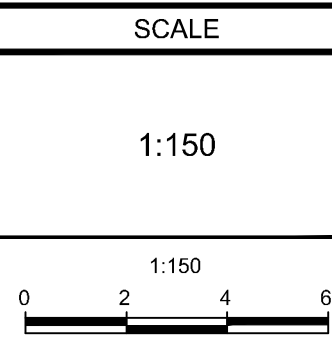
- This drawing shall be read in conjunction with all relevant Architectural, Engineering, and related drawings and documents.
- Refer to Engineering Drawings for Grading. Provide drainage as indicated in grading plan. Round all tops and toes of slopes, smoothly. Compact all areas to 95% Standard Proctor Density unless otherwise noted.
- Refer to Architectural Drawings for site layout.
- Refer to Engineering Drawings for site servicing.
- Contractor must contact utility companies for locates prior to excavation or planting. It is essential to use the plans and details in conjunction with the specifications and notes. Some or all the notes may not apply to the special requirements of a plant species or a planting environment.
- Existing trees to be retained shall be protected according to the contract detail and specifications.
- Plant material shall be No. 1 Grade and shall comply with Canadian Standards for Nursery Stock (latest edition) published by the Canadian Nursery Landscape Association.
- Use plant material with strong fibrous root system free of disease, defects or injuries, and structurally sound. Use trees with straight trunks, well and characteristically branched for species. Obtain approval from consultant of plant material at source prior to digging. All trees and shrubs shall be container grown, potted, W/B or B/B, as indicated on Plant List. Bare root planting will only be acceptable for certain species and as approved by the Landscape Architect.
- Plant material substitutions shall not be permitted without the written approval from the consultant, with 48 hours notice, prior to shipping plant material.
- Plant locations are schematic / approximate only. Contractor shall stake out locations on site for approval by the Landscape Architect prior to installation. The illustrated number of plants shown in the Planting Plan supersedes the estimated number in the Plant List. Contractor to report any discrepancies to the Landscape Architect prior to installation. Contractor will assume full responsibility if the Landscape Architect is not notified.
- Shrubs, Perennials, Vines, and Groundcovers shall be planted in a continuous planting bed of 600mm depth with approved topsoil covered with 75mm depth shredded bark mulch.
- Ensure trees are thoroughly watered following planting. Monitor material and ensure adequate moisture until acceptance.
- In heavy clay or poorly drained soils, set root ball with root collar 75-100mm higher than finished grade.
- Trees in raised planters shall be set on a bed of heavily compacted growing medium, at the bottom, to eliminate settlement. Backfill around the root ball with growing medium in 150mm lifts. Tamp and water each lift to eliminate air pockets or settlement. Growing medium to be 80% commercial screened topsoil, 10% peat moss or compost, and 10% perlite. Top of the planter shall be covered with 75mm of shredded bark mulch.
- Sod and/or seed areas to receive 150mm depth topsoil as specified. Sod shall be No. 1 Kentucky Bluegrass Sod grown from minimum mixture of 3 Kentucky Bluegrass cultivars. Quality and source shall comply with Canadian Standards for Nursery Stock, Section 17, (latest edition) published by the Canadian Nursery Landscape Nursery Landscape Association. Unless otherwise specified, turf is to be maintained by the contractor until a second cutting is accepted by the Landscape Architect.
- Apply the following mineral fertilizer unless soil tests show other requirements: Sodded areas - (8-32-16) 8% Nitrogen, 32% Phosphorus, 16% Potash at a rate of 350kg/ha. - Planting Beds - (8-32-16) - 8% Nitrogen, 32% Phosphorus, 16% Potash as per manufacturer specifications.
- Reinstate all areas damaged or disturbed beyond the Limit of Work.

115105 - PLANT LIST						
KEY	QTY.	BOTANICAL NAME	COMMON NAME	SIZE	COND.	SPACING
DECIDUOUS TREES						
GTS	6	<i>Gleditsia triacanthos</i> var. <i>inermis</i> 'Sunburst'	Sunburst Honeylocust	50mm Cal	WB	AS SHOWN
AXA	6	<i>Amelanchier x grandiflora</i> 'Autumn Brilliance'	Autumn Brilliance Serviceberry	50mm Cal	WB	AS SHOWN
DECIDUOUS SHRUBS						
Pop	16	<i>Physocarpus opulifolius</i> 'Poderas 1'	Gumdrop Burgundy Candy Ninebark	50cm Ht	PT	As Shown
CONIFEROUS SHRUBS						
Jhb	3	<i>Juniperus horizontalis</i> 'Bar Harbour'	Bar Harbour Juniper	40cm Spr	PT	AS SHOWN
Jsm	6	<i>Juniperus scopulorum</i> 'Medora'	Medora Juniper	175cm Ht	WB	AS SHOWN
Jsb	25	<i>Juniperus squamata</i> 'Blue Carpet'	Blue Carpet Juniper	40cm Spr	PT	AS SHOWN
PERENNIALS, GRASSES						
caa	48	<i>Calamagrostis x acutifolia</i> 'Avalanche'	Avalanche Reed Grass	1g 2nd yr	PT	60cm O.C
hrs	25	<i>Hemerocallis</i> 'Ruby Stella'	Ruby Stella Daylily	1g 2nd yr	PT	30cm O.C
hpe	171	<i>Heuchera micrantha</i> 'Palace Purple'	Palace Purple Coral Bells	1g 2nd yr	PT	30cm O.C
pvh	25	<i>Panicum virgatum</i> 'Heavy Metal'	Heavy Metal Switch Grass	1g 2nd yr	PT	60cm O.C
pvs	58	<i>Panicum virgatum</i> 'Shenandoah'	Shenandoah Switch Grass	1g 2nd yr	PT	60cm O.C
ssp	8	<i>Schizachyrium scoparium</i> 'Prairie Blues'	Prairie Blues Blue Stem	1g 2nd yr	PT	45cm O.C

NOTE:  
THE POSITION OF ALL POLE LINES, CONDUITS, WATERMANS, SEWERS AND OTHER UNDERGROUND AND OVERGROUND UTILITIES AND STRUCTURES IS NOT NECESSARILY SHOWN ON THE CONTRACT DRAWINGS, AND WHERE SHOWN, THE ACCURACY OF THE POSITION OF SUCH UTILITIES AND STRUCTURES IS NOT GUARANTEED. BEFORE STARTING WORK, DETERMINE THE EXACT LOCATION OF ALL SUCH UTILITIES AND STRUCTURES AND ASSUME ALL LIABILITY FOR DAMAGE TO THEM.

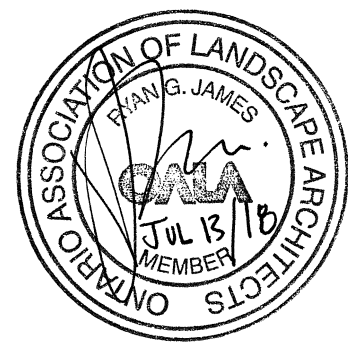
NOT FOR  
CONSTRUCTION

No.	REVISION	DATE	BY
5.	ISSUED FOR SITE PLAN CONTROL	JUL 13/18	SC
4.	ISSUED FOR PRICING	APR 30/18	SC
3.	ISSUED FOR REVIEW - PLANTER REVISIONS	MAR 20/18	SC
2.	REVISED AS PER CITY COMMENTS	MAR 2/18	SC
1.	ISSUED FOR SPA	NOV 1/17	SC



DESIGN	SC
CHECKED	RGJ
DRAWN	ML
CHECKED	SC
APPROVED	RGJ

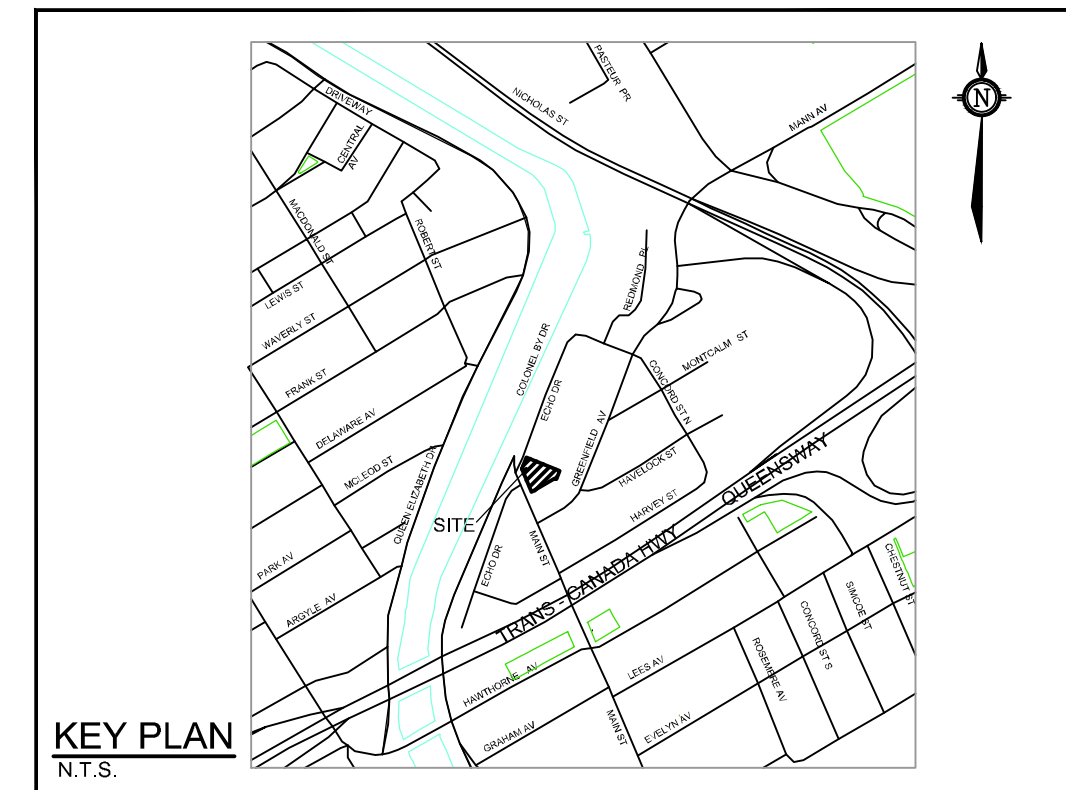
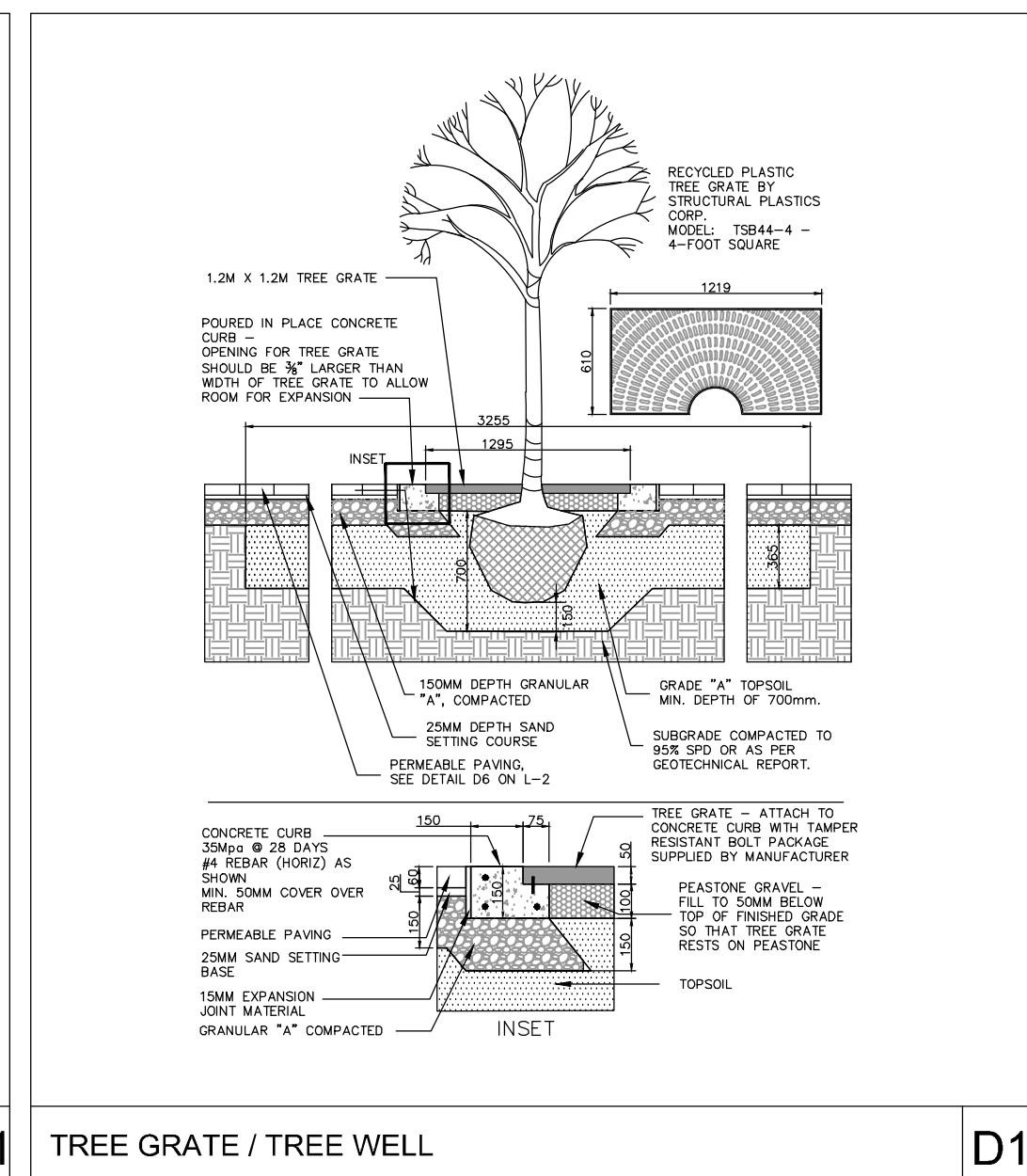
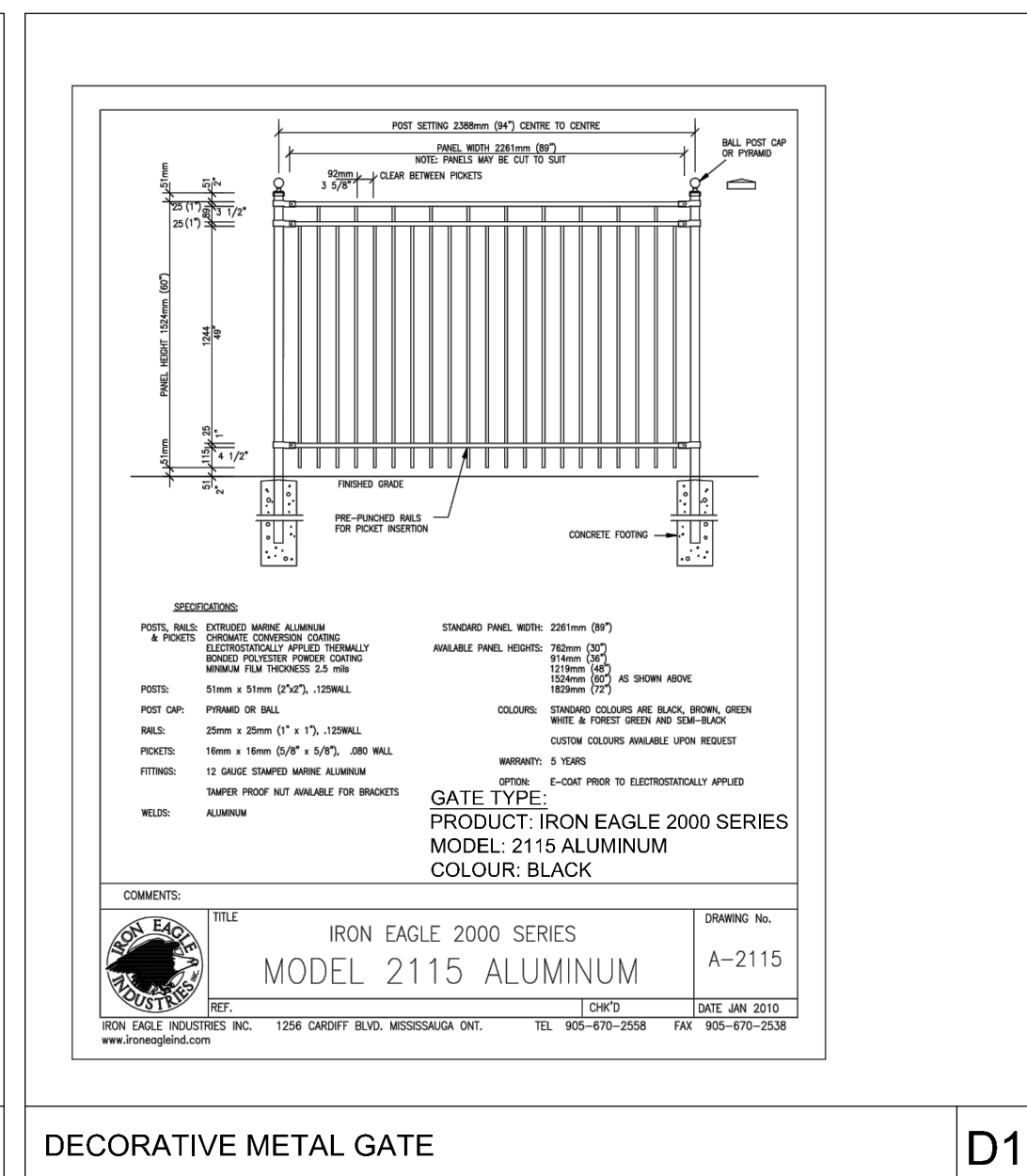
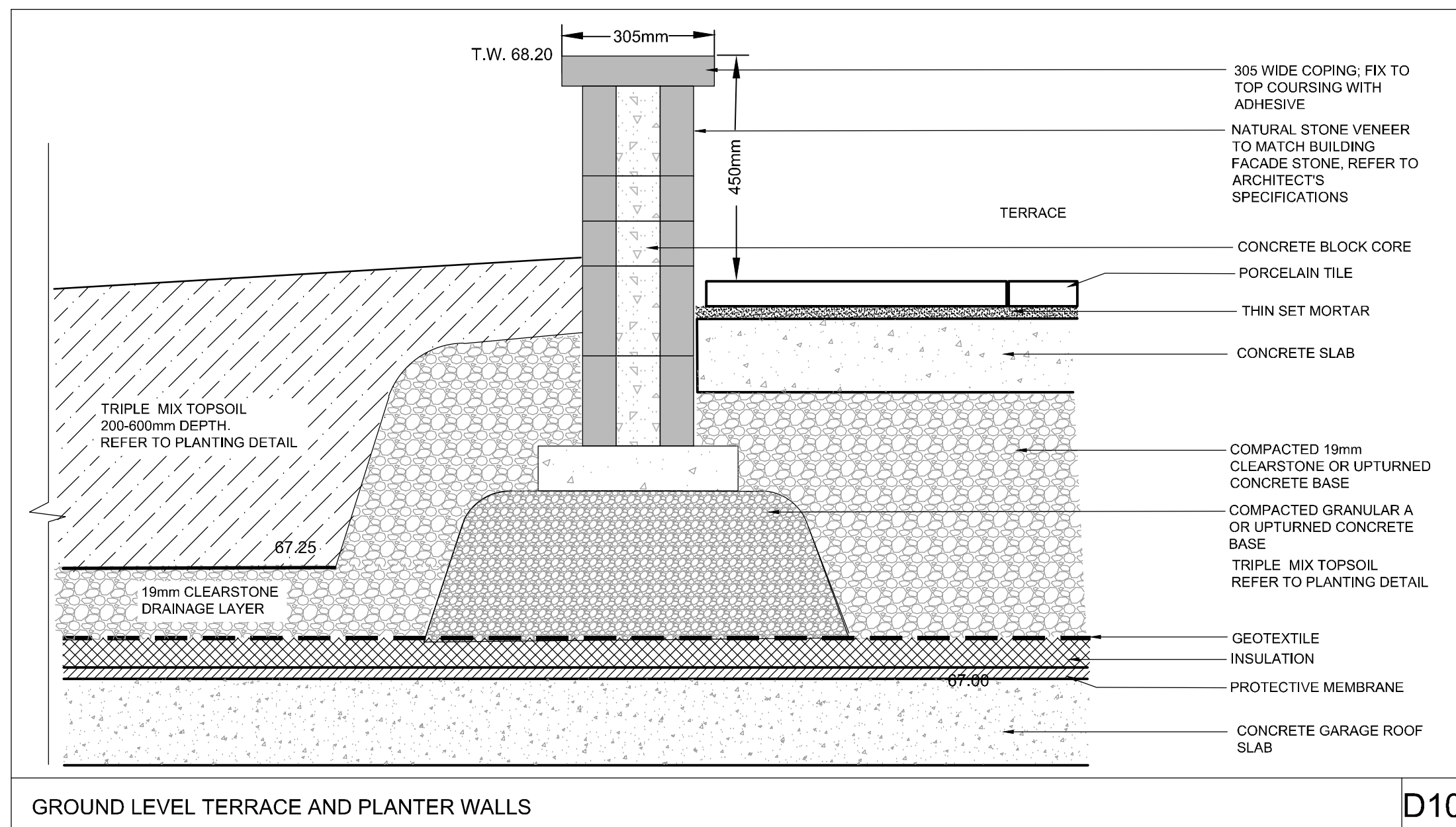
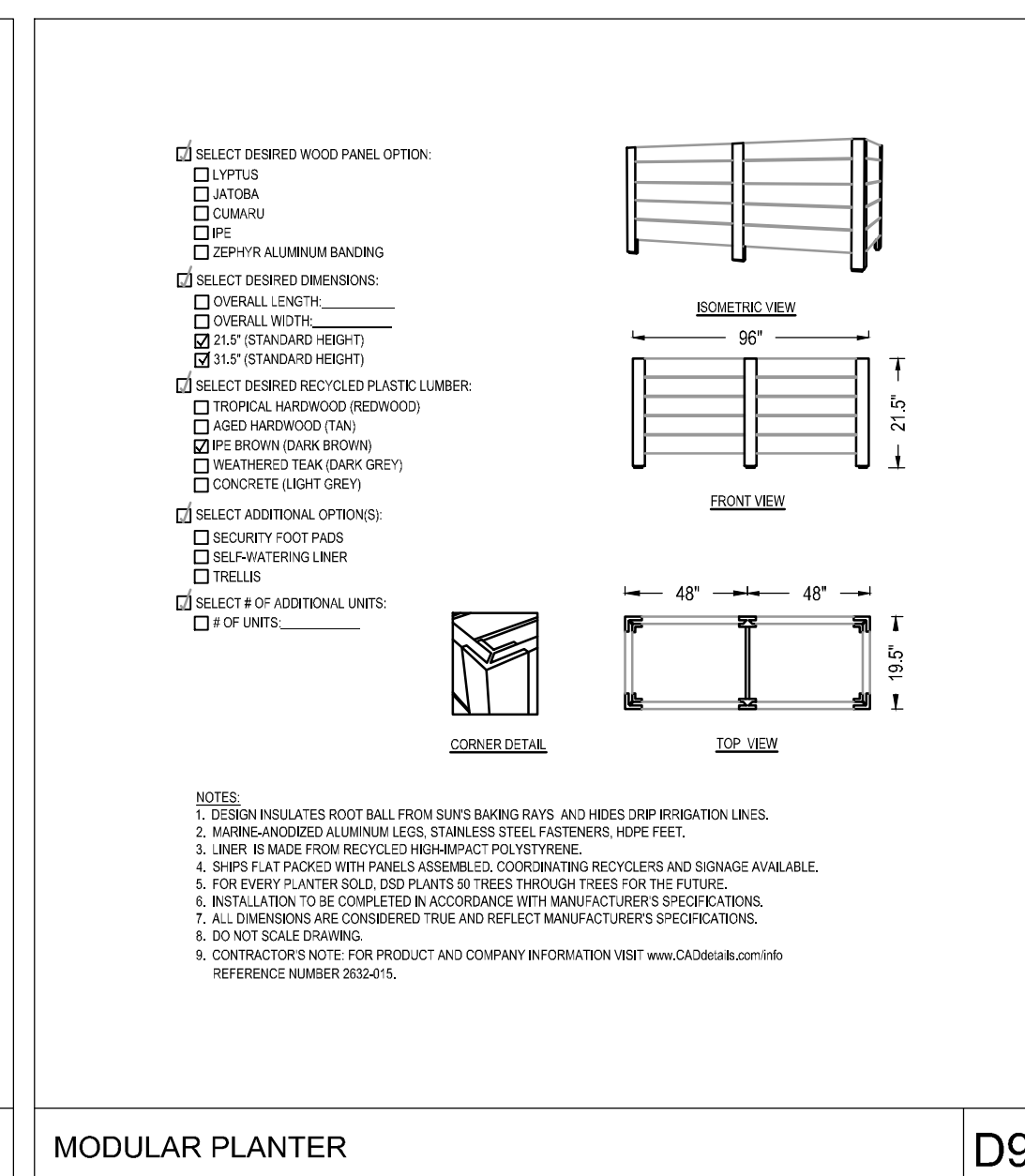
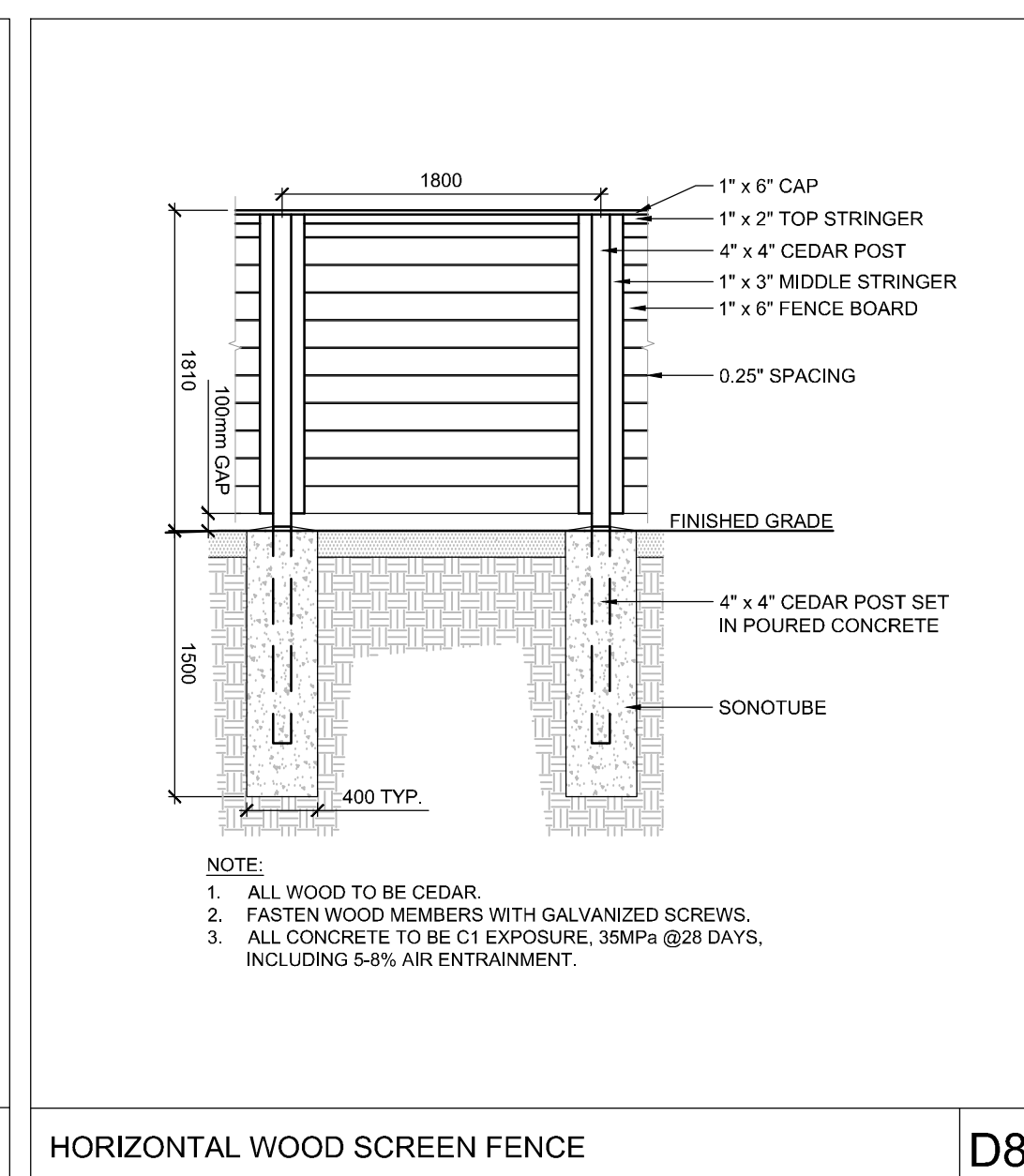
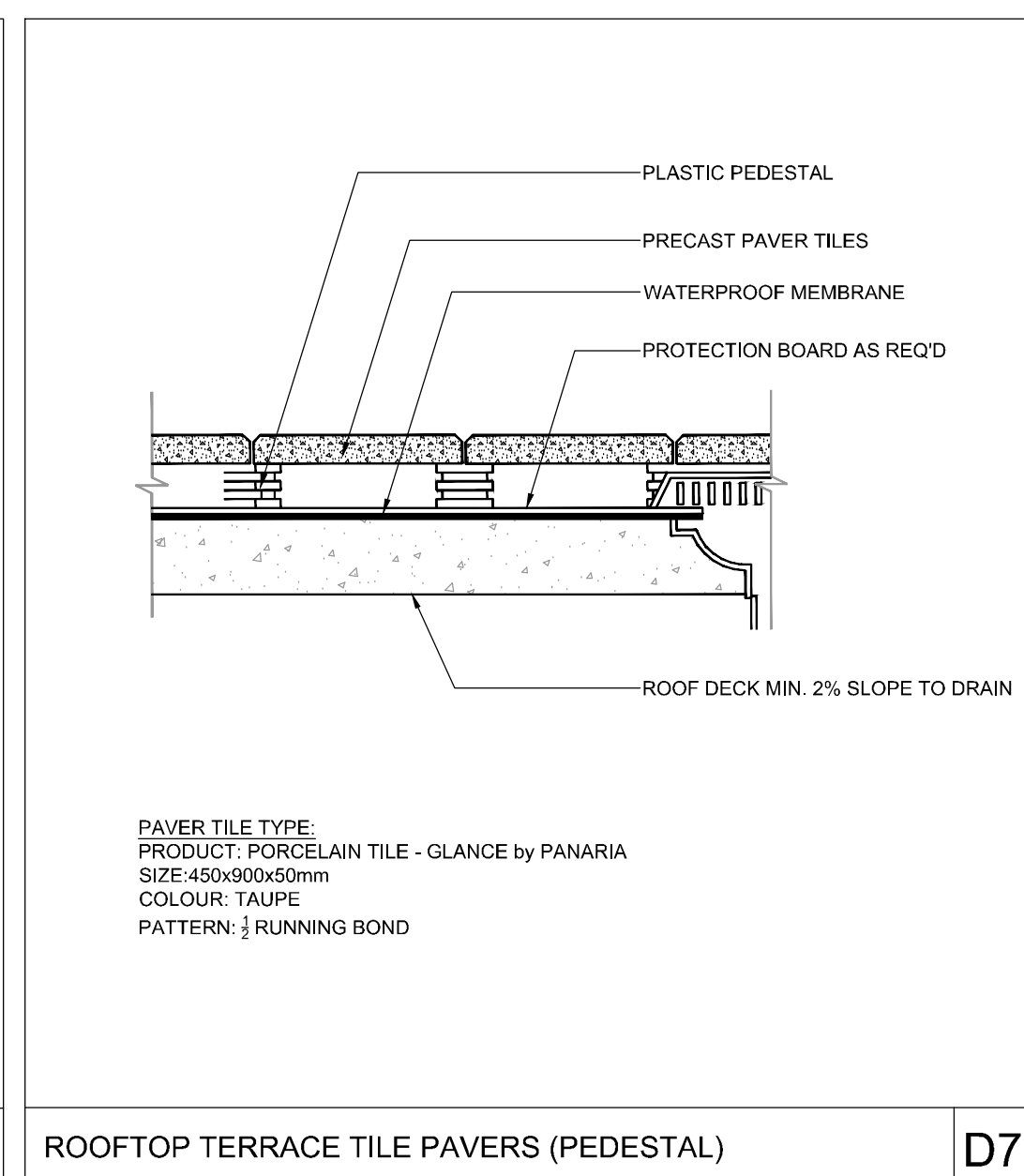
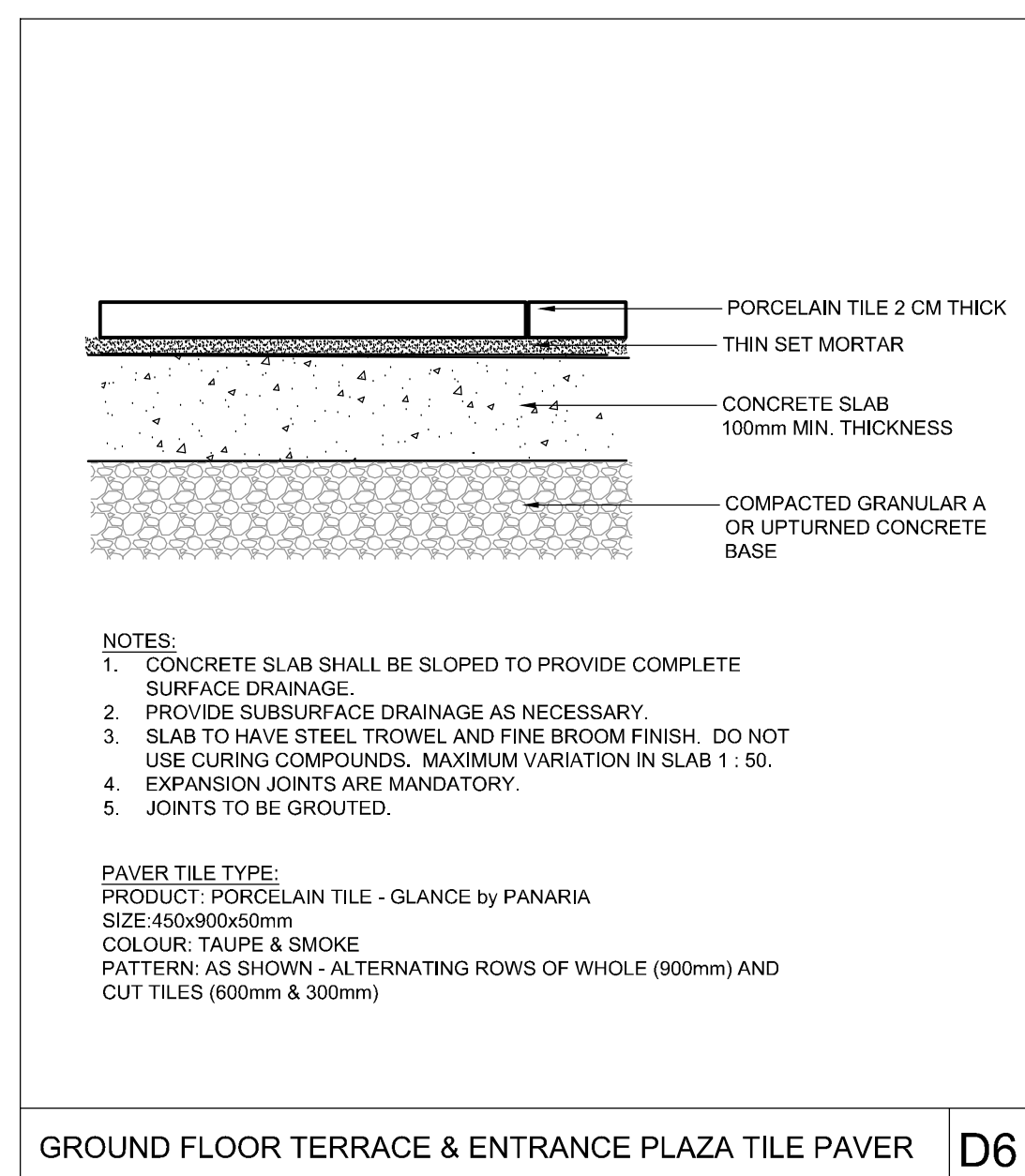
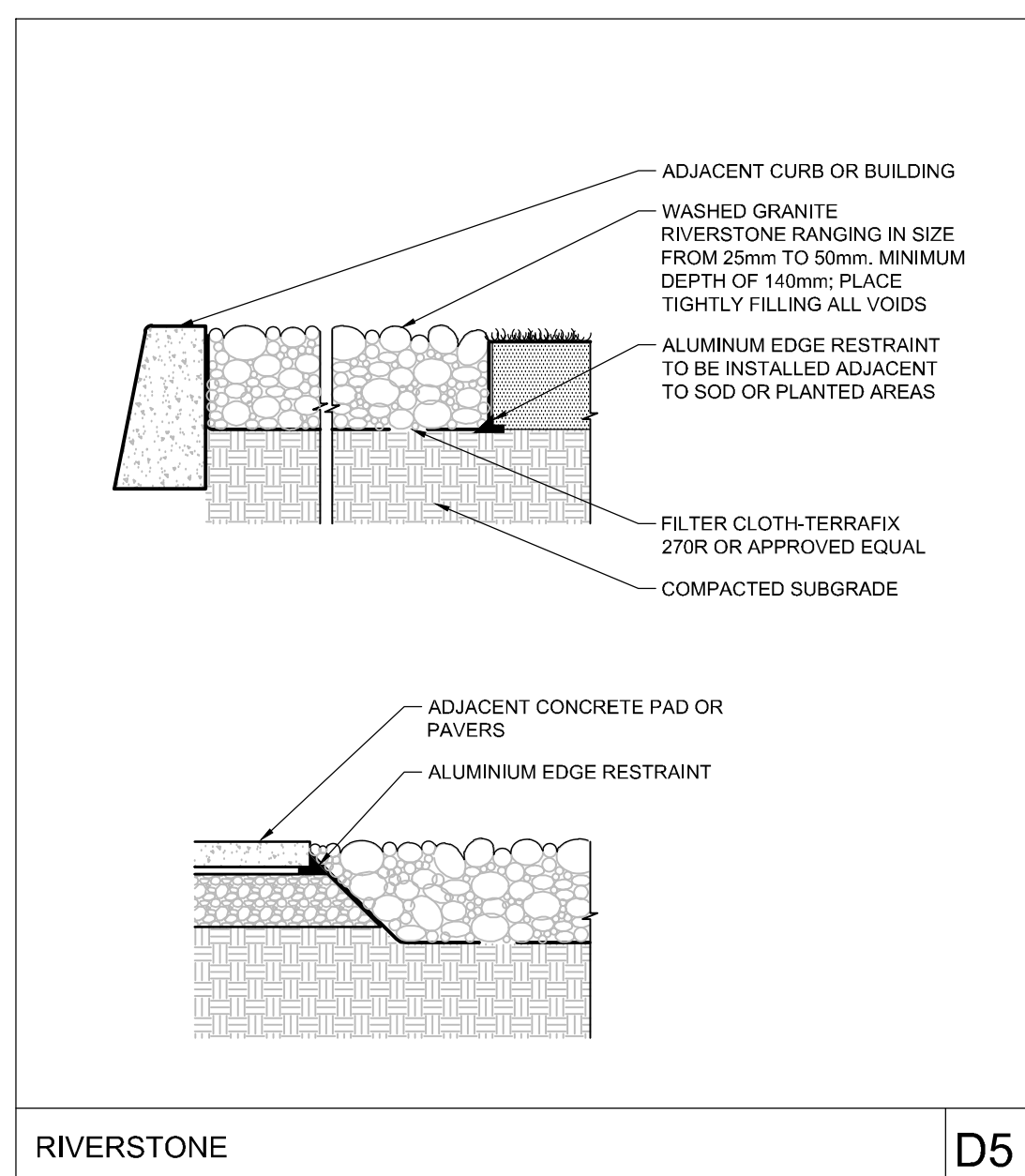
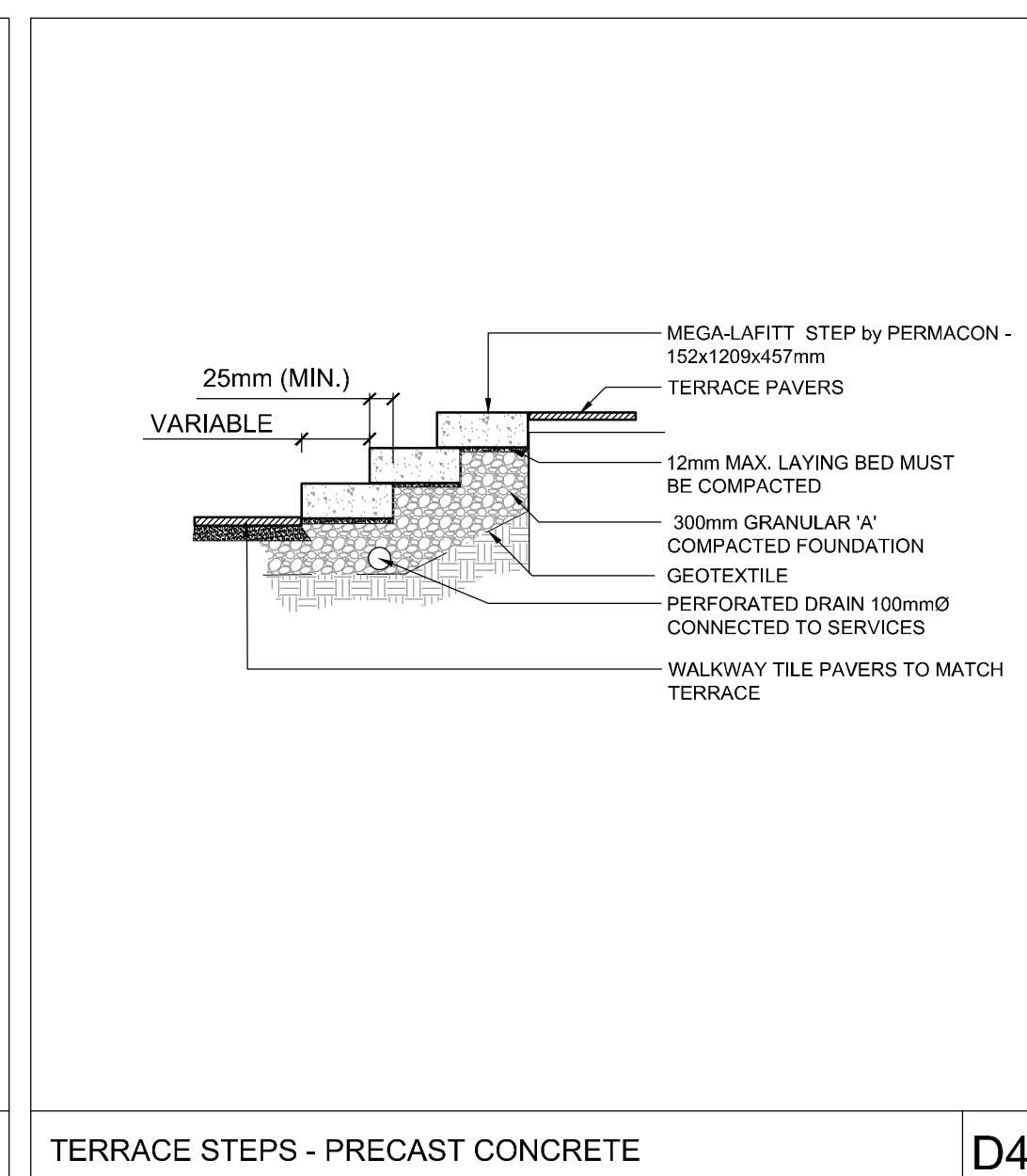
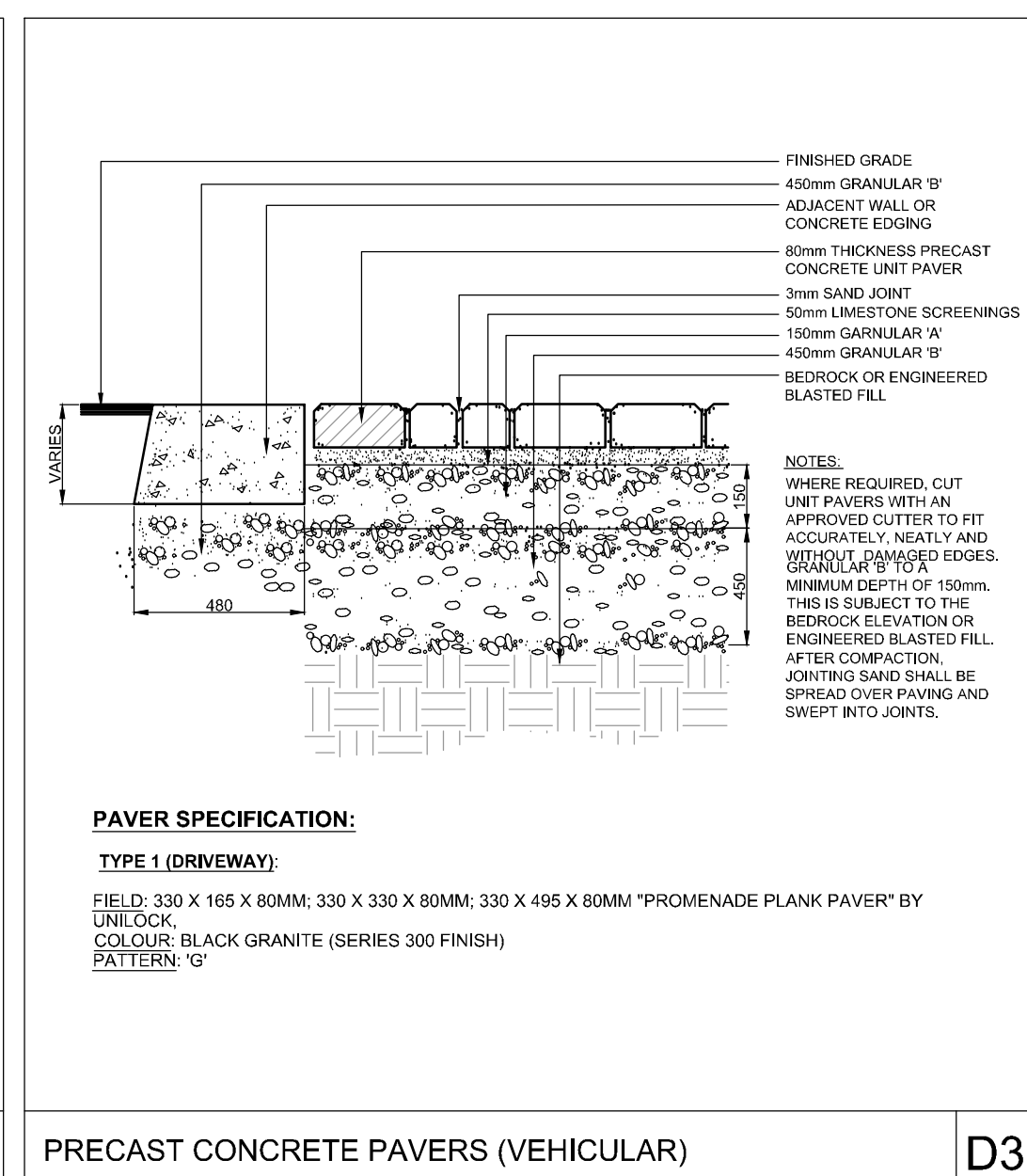
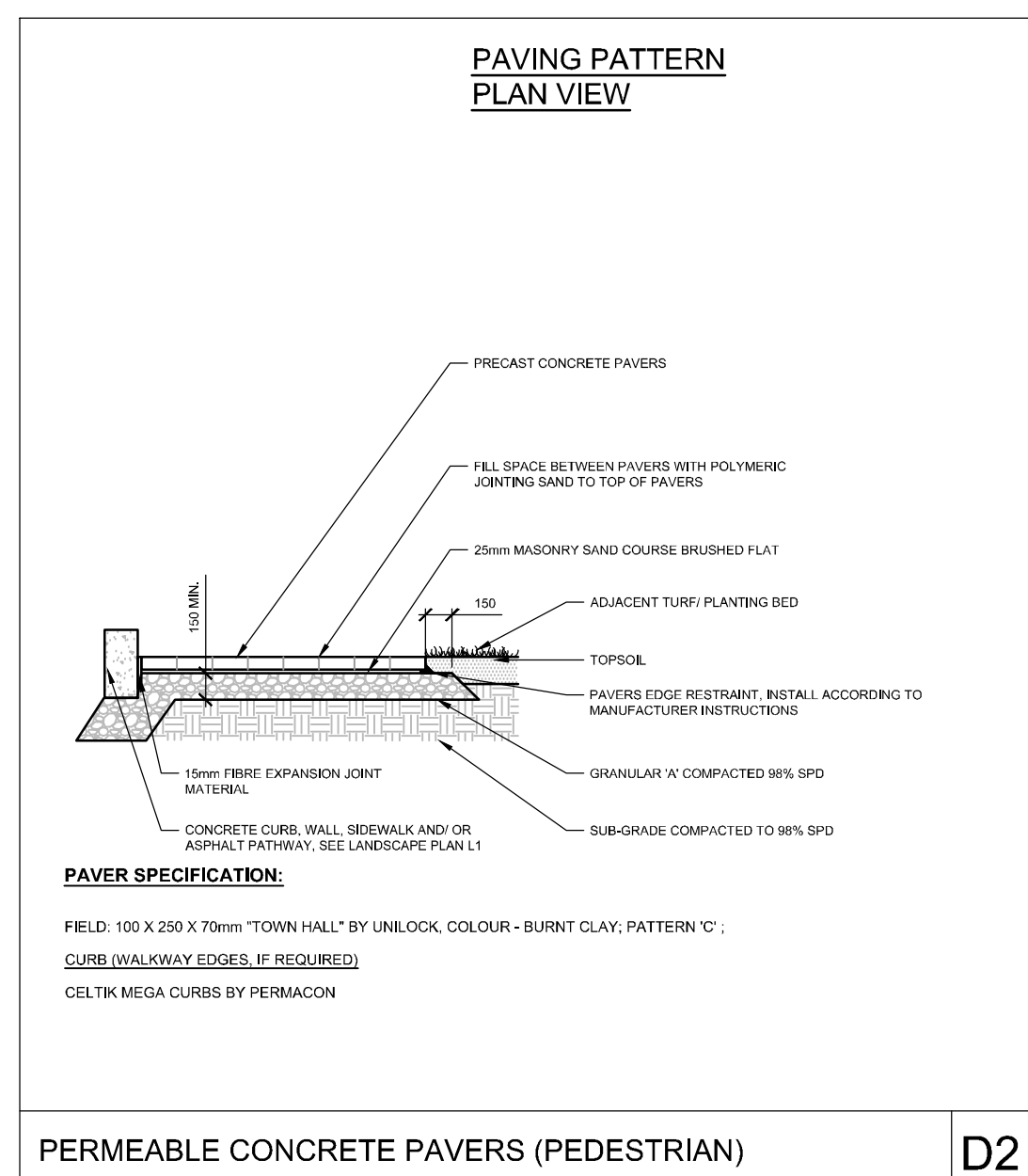
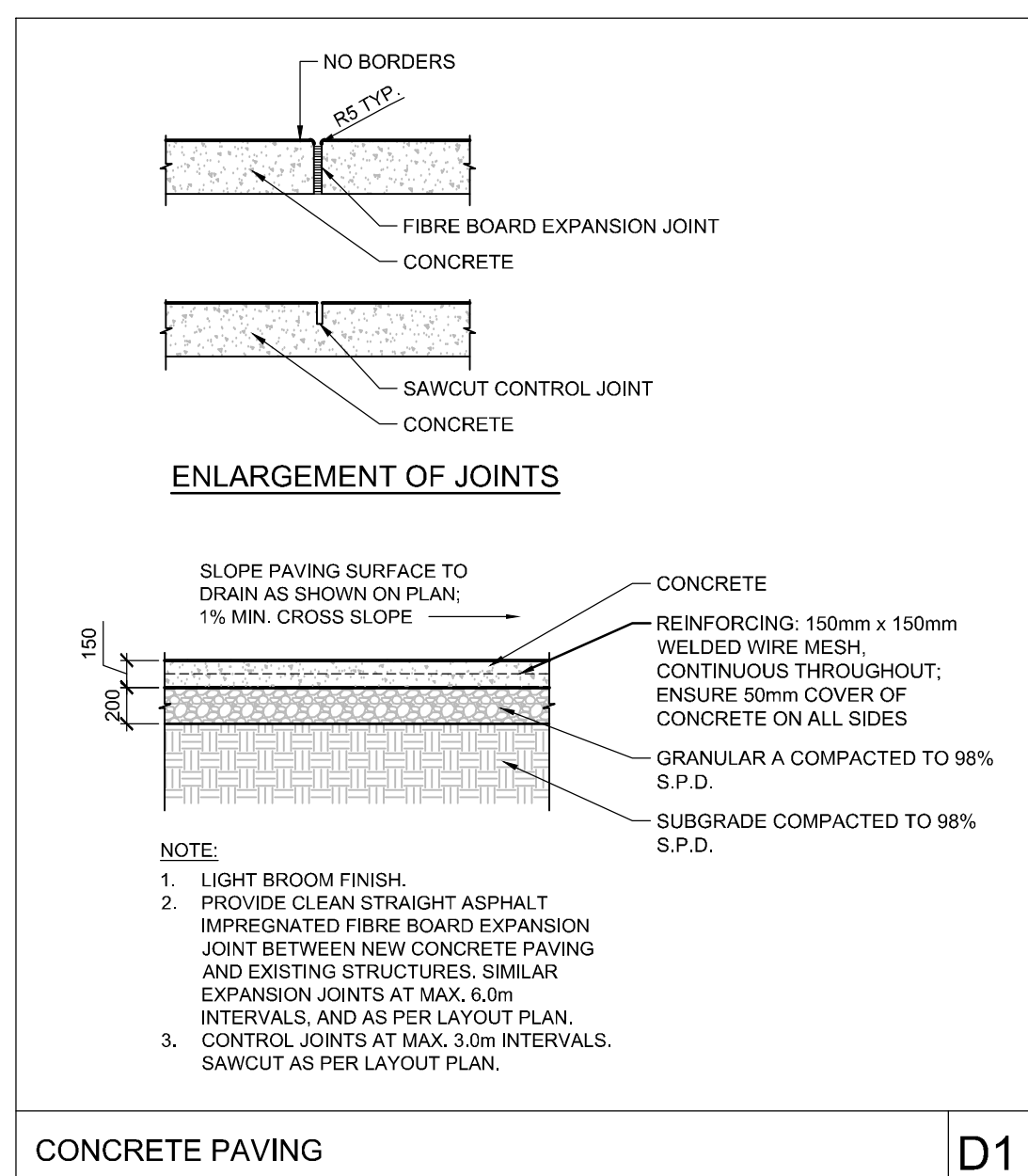
FOR REVIEW ONLY



**NOVATECH**  
Engineers, Planners & Landscape Architects  
Suite 200, 240 Michael Cowland Drive  
Ottawa, Ontario, Canada K2M 1P6  
(613) 254-9643  
(613) 254-5867  
www.novatech-eng.com

LOCATION CITY OF OTTAWA 115 ECHO DRIVE		PROJECT No.	115105-00
DRAWING NAME PLANTING PLAN		REV #5	
		DRAWING No.	115105-L2





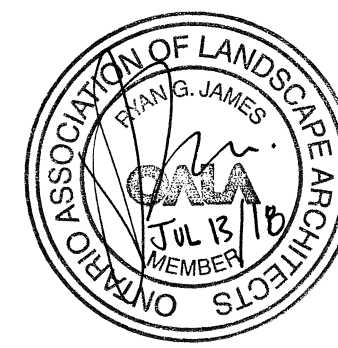
**NOTE:**  
THE POSITION OF ALL POLE LINES, CONDUITS,  
WATERMAINS, SEWERS AND OTHER  
UNDERGROUND AND OVERGROUND UTILITIES AND  
STRUCTURES IS NOT NECESSARILY SHOWN ON  
THE CONTRACT DRAWINGS, AND WHERE SHOWN,  
THE ACCURACY OF THE POSITION OF SUCH  
UTILITIES AND STRUCTURES IS NOT GUARANTEED.  
BEFORE STARTING WORK, DETERMINE THE EXACT  
LOCATION OF ALL SUCH UTILITIES AND  
STRUCTURES AND ASSUME ALL LIABILITY FOR  
DAMAGE TO THEM.

NOT FOR  
CONSTRUCTION

4.	ISSUED FOR SITE PLAN CONTROL	JUL 13/18	SC	
3.	ISSUED FOR PRICING	APR 30/18	SC	
2.	REVISED AS PER CITY COMMENTS	MAR 2/18	SC	
1.	ISSUED FOR SPA	NOV 1/17	SC	
No.	REVISION	DATE		BY

	SCALE	DESIGN	SCALE
		CHECKED	SCALE
		DRAWN	SCALE
		CHECKED	SCALE
		APPROVED	SCALE

FOR REVIEW ONLY	



**NOVATECH**  
Engineers, Planners & Landscape Architects  
Suite 200, 240 Michael Cowpland Drive  
Ottawa, Ontario, Canada K2M 1P6

Telephone (613) 254-9643  
Facsimile (613) 254-5867  
Website [www.novatech-eng.com](http://www.novatech-eng.com)

LOCATION CITY OF OTTAWA 115 ECHO DRIVE	
DRAWING NAME  <b>LANDSCAPE DETAILS</b>	PROJECT No.
	115105-01
	REV
	REV #
DRAWING No.	
115105-L-1	