

- ### PLANTING NOTES
- This drawing shall be read in conjunction with all relevant Architectural, Engineering, and related drawings and documents.
  - Refer to Engineering Drawings for Grading. Provide drainage as indicated in grading plan. Round all tops and toes of slopes, smoothly. Compact all areas to 95% Standard Proctor Density unless otherwise noted.
  - Refer to Architectural Drawings for site layout.
  - Refer to Engineering Drawings for site servicing.
  - Contractor must contact utility companies for locates prior to excavation or planting. It is essential to use the plans and details in conjunction with the specifications and notes.
  - Existing trees to be retained shall be protected according to the contract detail and specifications.
  - Plant material shall be No. 1 Grade and shall comply with Canadian Standards for Nursery Stock (latest edition) published by the Canadian Nursery Landscape Association.
  - Use plant material with strong fibrous root system free of disease, defects or injuries, and structurally sound. Use trees with straight trunks, well and characteristically branched for species. Obtain approval from consultant of plant material at source prior to digging. All trees and shrubs shall be container grown, potted, W/B or B/B, as indicated on Plant List. Bare root planting will only be acceptable for certain species and as approved by the Landscape Architect.
  - Plant material substitutions shall not be permitted without the written approval from the consultant, with 48 hours notice, prior to shipping plant material.
  - Plant locations are schematic / approximate only. **Contractor shall stake out locations on site for approval by the Landscape Architect prior to installation.** The illustrated number of plants shown in the Planting Plan supersedes the estimated number in the Plant List. Contractor to report any discrepancies to the Landscape Architect prior to installation. Contractor will assume full responsibility if the Landscape Architect is not notified.
  - Shrubs, Perennials, Vines, and Groundcovers shall be planted in a continuous planting bed of 450mm depth with approved topsoil covered with 75mm depth shredded bark mulch.
  - Ensure trees are thoroughly watered following planting. Monitor material and ensure adequate moisture until acceptance.
  - In heavy clay or poorly drained soils, set root ball with root collar 75-100mm higher than finished grade.
  - Sod and/or seed areas to receive 100mm depth topsoil as specified. Sod shall be No. 1 Kentucky Bluegrass Sod grown from minimum mixture of 3 Kentucky Bluegrass cultivars. Quality and source shall comply with Canadian Standards for Nursery Stock, Section 17, (latest edition) published by the Canadian Nursery Landscape Nursery Landscape Association. Unless otherwise specified, turf is to be maintained by the contractor until a second cutting is accepted by the Landscape Architect.
  - Apply the following mineral fertilizer unless soil tests show other requirements: Sodded areas - (8-32-16) 8% Nitrogen, 32% Phosphorus, 16% Potash at a rate of 350kg/ha. - Planting Beds - (8-32-16) - 8% Nitrogen, 32% Phosphorus, 16% Potash as per manufacturer specifications.
  - Reinstate all areas damaged or disturbed beyond the Limit of Work.

**APPROVED**  
By Adam Brown at 4:32 pm, Aug 07, 2018

*AR*

**ADAM BROWN**  
MANAGER, DEVELOPMENT REVIEW - RURAL  
PLANNING, INFRASTRUCTURE & ECONOMIC  
DEVELOPMENT DEPARTMENT, CITY OF OTTAWA

#### 117217 - L7 - Plant List

KEY	QTY	BOTANICAL NAME	COMMON NAME	SIZE	COND	SPACING
<b>Coniferous Trees</b>						
LL	10	<i>Larix laricina</i>	Tamarack	150cm Ht	WB	As Shown
PG	2	<i>Picea glauca</i>	White Spruce	200cm Ht	WB	As Shown
<b>Deciduous Trees</b>						
AR	9	<i>Acer rubrum</i>	Red Maple	40mm Cal	WB	As Shown
AS	3	<i>Acer saccharinum</i>	Silver Maple	40mm Cal	WB	As Shown
BA	4	<i>Betula alleghaniensis</i>	Yellow Birch	40mm Cal	WB	As Shown
BP	8	<i>Betula papyrifera</i>	Paper Birch	40mm Cal	WB	As Shown
CO	5	<i>Celtis occidentalis</i>	Hackberry	40mm Cal	WB	As Shown
PGD	5	<i>Populus grandidentata</i>	Largeleaf Aspen	40mm Cal	WB	As Shown
PTR	10	<i>Populus tremuloides</i>	Trembling Aspen	40mm Cal	WB	As Shown
<b>Deciduous Large Shrub Mix</b>						
Al	16	<i>Alnus incana ssp. rugosa</i>	Speckled Alder	50cm Ht	PT	As Shown
Ca	13	<i>Cornus alternifolia</i>	Pagoda Dogwood	50cm Ht	PT	As Shown
SB	13	<i>Salix bebbiana</i>	Beaked Willow	50cm Ht	PT	As Shown
<b>Deciduous Medium Shrub Mix</b>						
Ac	26	<i>Amelanchier canadensis</i>	Canadian Serviceberry	50cm Ht	PT	400cm O.C
Cr	30	<i>Cornus racemosa</i>	Grey Dogwood	50cm Ht	PT	400cm O.C
SI	30	<i>Salix lucida</i>	Shining Willow	50cm Ht	PT	400cm O.C
<b>Deciduous Small Shrub Mix</b>						
Ca	33	<i>Cornus sericea</i>	Red Osier Dogwood	50cm Ht	PT	200cm O.C
Sca	33	<i>Salix candida</i>	Hoary Willow	50cm Ht	PT	200cm O.C
Sco	33	<i>Salix cordata</i>	Heartleaf Willow	50cm Ht	PT	200cm O.C
Sd	33	<i>Salix discolor</i>	Pussy Willow	50cm Ht	PT	200cm O.C
Sc	33	<i>Sambucus canadensis</i>	American Black Elderberry	50cm Ht	PT	200cm O.C

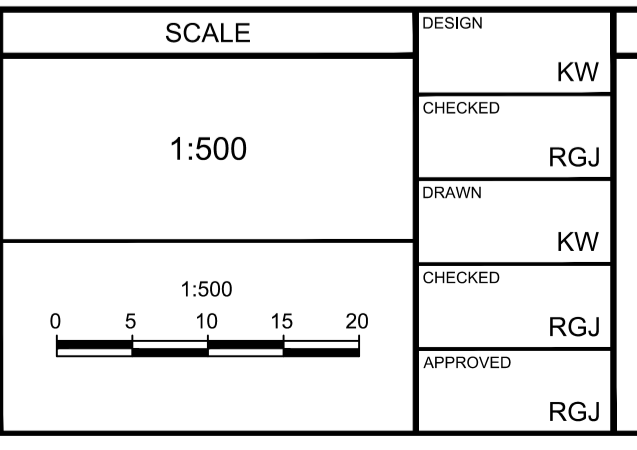
#### LANDSCAPE LEGEND:

	PROPOSED DECIDUOUS TREE
	PROPOSED CONIFEROUS TREE
	ALNUS INCANA SSP. RUGOSA
	CORNUS ALTERNIFOLIA
	SALIX BEBBIANA
	PROPOSED MEDIUM DECIDUOUS SHRUB MIX
	PROPOSED SMALL DECIDUOUS SHRUB MIX
	SEED TYPE A - DETENTION BASIN MIX BY PICKSEED
	SEED TYPE B - GREENFIELDS MIX BY PICKSEED
	SPECIES (SEE PLANT LIST)
	QUANTITY

**NOTE:**  
THE POSITION OF ALL POLE LINES, CONDUITS, WATERMANS, SEWERS AND OTHER UNDERGROUND AND OVERGROUND UTILITIES AND STRUCTURES IS NOT NECESSARILY SHOWN ON THE CONTRACT DRAWINGS, AND WHERE SHOWN, THE ACCURACY OF THE POSITION OF SUCH UTILITIES AND STRUCTURES IS NOT GUARANTEED. BEFORE STARTING WORK, DETERMINE THE EXACT LOCATION OF ALL SUCH UTILITIES AND STRUCTURES AND ASSUME ALL LIABILITY FOR DAMAGE TO THEM.

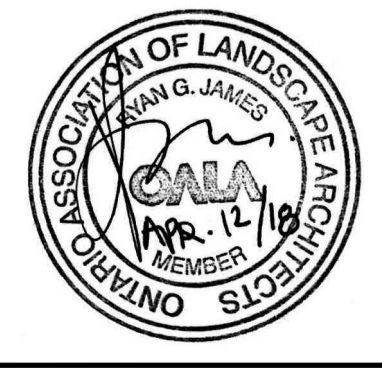
**NOT FOR CONSTRUCTION**

No.	REVISION	DATE	BY
4.	SITE PLAN APPLICATION	APR 12/18	RGJ
3.	FINAL CO-ORDINATION	APR 10/18	RGJ
2.	FINAL CO-ORDINATION	APR 2/18	RGJ
1.	PRELIMINARY DESIGN PACKAGE	MAR 16/18	RGJ



DESIGN	CHECKED	DRAWN	APPROVED
KW	RGJ	KW	RGJ

**FOR REVIEW ONLY**



**NOVATECH**  
Engineers, Planners & Landscape Architects  
Suite 200, 240 Michael Cowpland Drive  
Ottawa, Ontario, Canada K2M 1P6  
Telephone (613) 254-9643  
Facsimile (613) 254-5867  
Website www.novatech-eng.com

LOCATION		PROJECT No.	
CITY OF OTTAWA BOUNDARY ROAD DISTRIBUTION CENTRE - YOW1		117217	
DRAWING NAME		REV	
STORMWATER MANAGEMENT FACILITY LANDSCAPE PLAN		REV # 4	
DRAWING No.		117217-L7	