

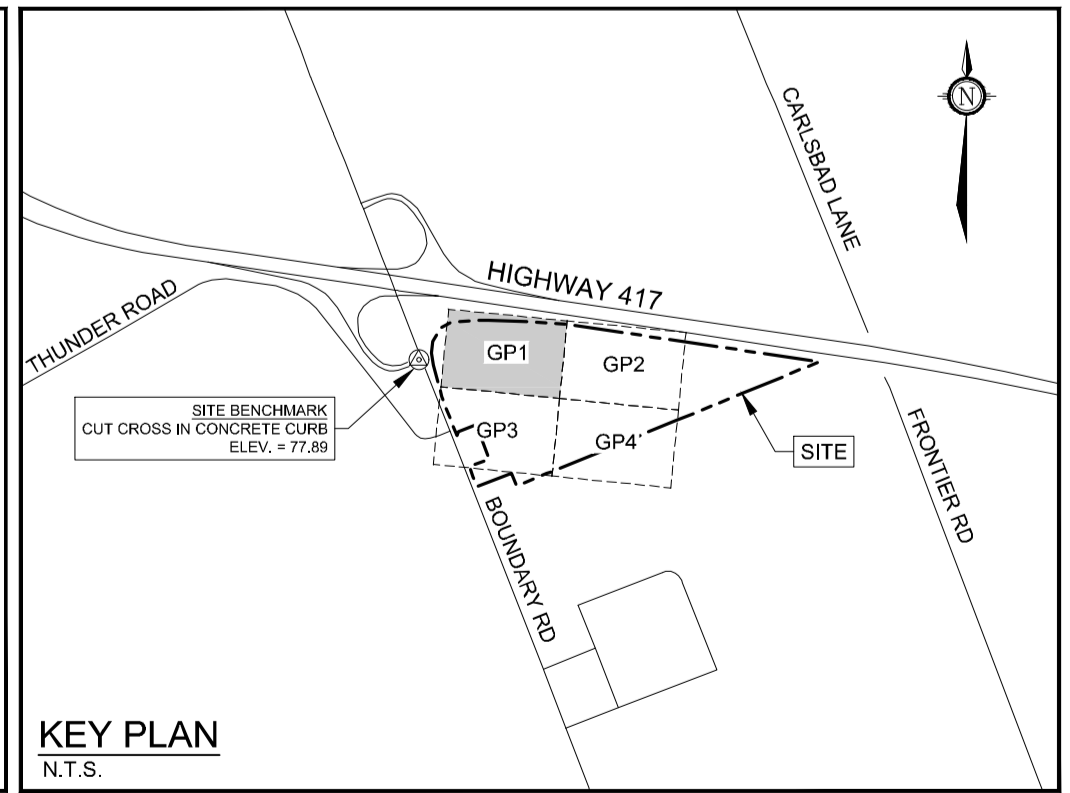
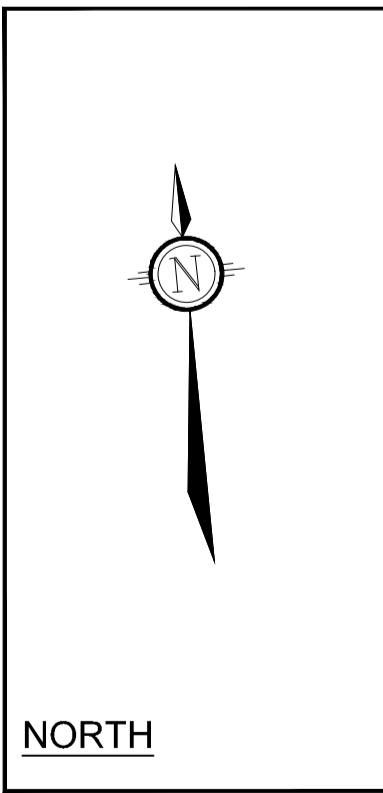
APPROVED
By Adam Brown at 4:11 pm, Aug 07, 2018

AR
ADAM BROWN
MANAGER, DEVELOPMENT REVIEW - RURAL
PLANNING, INFRASTRUCTURE & ECONOMIC
DEVELOPMENT DEPARTMENT, CITY OF OTTAWA

REFER TO DRAWING 117217-ND FOR NOTES,
DETAILS AND CROSS SECTION DETAILS

LEGEND

- LEGAL LINES
- PROPOSED CULVERT
- DC --- BARRIER CURB WITH DEPRESSION
- SUBDRAIN AND DIRECTION OF FLOW
- SANMH 100 PROPOSED SANITARY MH & SEWER
- STMMH 101 PROPOSED STORM MANHOLE & SEWER
- 50mm Ø WM (DOMESTIC)
- 250mm Ø WM (F.P.)
- PROPOSED WATERMAIN (MUNICIPAL POTABLE)
- PROPOSED WATERMAIN (FIRE PROTECTION)
- PROPOSED CAP
- HYD PROPOSED HYDRANT (MUNICIPAL POTABLE)
- HYD F.P. PROPOSED HYDRANT (FIRE PROTECTION)
- V&VB PROPOSED VALVE
- PIV PROPOSED POST INDICATOR VALVE
- B PROPOSED BEND
- RD" PROPOSED ROOF DRAIN (APPROXIMATE LOCATION)
- SUBDRAIN CLEANOUT



NOTE:
THE POSITION OF ALL POLE LINES, CONDUITS,
WATERMANS, SEWERS AND OTHER
UNDERGROUND AND OVERGROUND UTILITIES AND
STRUCTURES IS NOT NECESSARILY SHOWN ON
THE CONTRACT DRAWINGS, AND WHERE SHOWN,
THE ACCURACY OF THE POSITION OF SUCH
UTILITIES AND STRUCTURES IS NOT GUARANTEED.
BEFORE STARTING WORK, DETERMINE THE EXACT
LOCATION OF ALL SUCH UTILITIES AND
STRUCTURES AND ASSUME ALL LIABILITY FOR
DAMAGE TO THEM.

OWNER/APPLICANT INFORMATION:
BOUNDARY ROAD DEVELOPMENT INC.
16766 TRANSCANADIENNE, SUITE 500
KIRKLAND, QUÉBEC H9H 4M7

| No. | REVISION | DATE | BY |
|-----|---|-----------|-----|
| 7. | REVISED PER CITY AND MTO COMMENTS | JUN 29/18 | LKS |
| 6. | ISSUED FOR EXCAVATION, FOUNDATION AND SUPERSTRUCTURE PERMIT | APR 25/18 | LKS |
| 5. | ISSUED FOR SITE PLAN APPLICATION | APR 12/18 | LKS |
| 4. | ISSUED FOR FINAL COORDINATION | APR 9/18 | LKS |
| 3. | ISSUED FOR FINAL COORDINATION | APR 2/18 | LKS |
| 2. | PRELIMINARY DESIGN PACKAGE | MAR 16/18 | LKS |
| 1. | ISSUED FOR COORDINATION | MAR 12/18 | LKS |

| SCALE | DESIGN |
|-------|----------------|
| 1:500 | MS |
| | CHECKED MS/JLS |
| | DRAWN LKS |
| | CHECKED MS/JLS |
| | APPROVED MS |

FOR REVIEW ONLY

NOVATECH
Engineers, Planners & Landscape Architects
Suite 200, 240 Michael Cowpland Drive
Ottawa, Ontario, Canada K2M 1P6
Telephone (613) 254-9643
Facsimile (613) 254-5867
Website www.novatech-eng.com

| LOCATION | | PROJECT No. | |
|---------------------------|--|-------------|--|
| CITY OF OTTAWA | | 117217 | |
| 5225 BOUNDARY ROAD - YOW1 | | REV # 7 | |
| DRAWING NAME | | DRAWING No. | |
| GENERAL PLAN OF SERVICES | | 117217-GP1 | |

M:\2017\117217\CADD\design\117217-GP.dwg, GP1, Jun 29, 2018 - 10:42am, lkolam