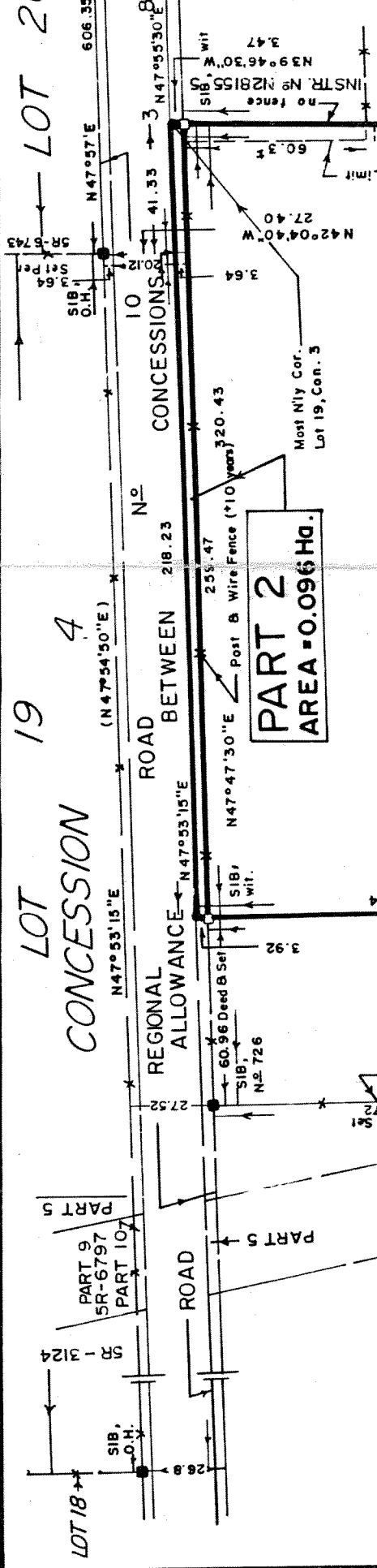


I REQUIRE THIS PLAN TO BE DEPOSITED UNDER "THE LAND TITLES ACT."
 August 24, 1987
 RECEIVED AND DEPOSITED
 PLAN 4R-7040
 6 October 1987

W. J. JOHNSTON
 LAND REGISTRAR FOR THE
 LAND TITLES DIVISION OF
 OTTAWA - CARLETON N^o 4
 WINCHESTER, ONTARIO

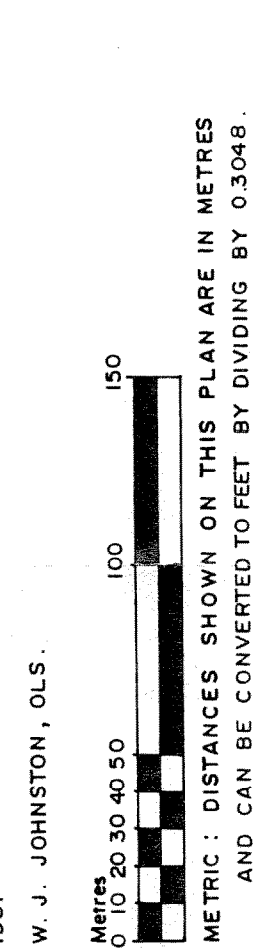


APPROVED
 Supt. 27, 1985
 ASSISTANT EXAMINER OF SURVEYS

SCHEDULE OF PARTS	
PART	CON.
1	19
2	19

PARTS 1 & 2 - ALL OF PARCEL 19-1 SECTION GOULBOURN - 3

PLAN OF SURVEY OF
 PART E1/2 LOT 19
 CONCESSION 3
 TOWNSHIP OF GOULBOURN
 REGIONAL MUNICIPALITY OF OTTAWA - CARLETON
 SCALE: 1:2000
 1987



W. J. JOHNSTON, OLS.
 METRIC: DISTANCES SHOWN ON THIS PLAN ARE IN METRES AND CAN BE CONVERTED TO FEET BY DIVIDING BY 0.3048.

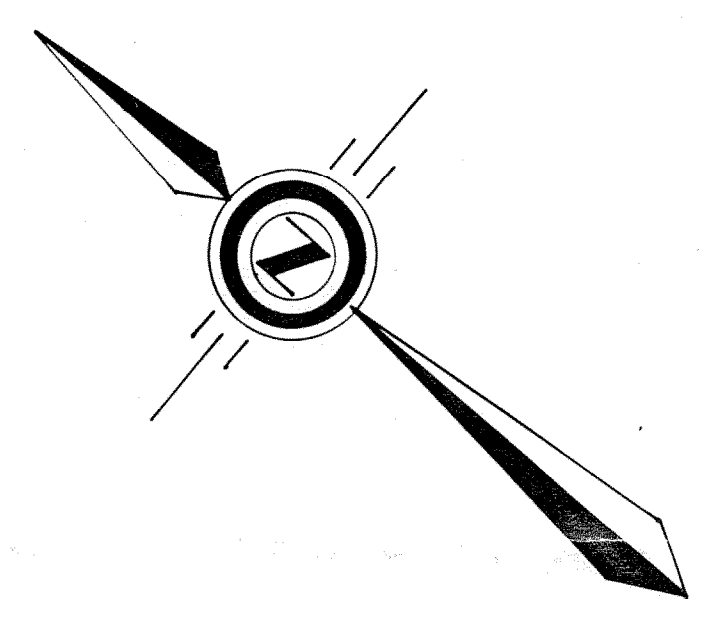
NOTES:
 STANDARD IRON BARS SHOWN THUS \diamond SIB
 IRON BARS SHOWN THUS \diamond IB
 \blacklozenge DENOTES EVIDENCE FOUND
 \circ DENOTES PLANTED
 WIT. DENOTES WITNESS
 O.H. DENOTES ONTARIO HYDRO
 FENCES SHOWN THUS $---$
 DISTANCES PER 5R-6743 SHOWN THUS (258.0)
 T.C.P.L. DENOTES TRANS CANADA PIPELINES

BEARING REFERENCE:
 BEARINGS ARE ASTROMOMIC, AND ARE REFERRED TO THE WESTERLY LIMIT OF PART 1, PLAN 5R-6743, BETWEEN MONUMENTS FOUND, THE BEARING BEING N40°51'20"W.

CAUTION:
 THIS PLAN IS NOT A PLAN OF SUBDIVISION WITHIN THE MEANING OF "THE PLANNING ACT."

SURVEYOR'S CERTIFICATE
 I CERTIFY THAT:
 1. THIS SURVEY AND PLAN ARE CORRECT AND IN ACCORDANCE WITH "THE SURVEYS ACT" AND "THE LAND TITLES ACT" AND THE REGULATIONS MADE THERE UNDER.
 2. THE SURVEY WAS COMPLETED ON THE 24th DAY OF AUG. 1987.

Aug. 24, 1987
 W. J. JOHNSTON
 ONTARIO LAND SURVEYOR
 WINCHESTER, ONTARIO



FROM THE OFFICES OF
 HAZEN MELDRUM LIMITED
 ONTARIO LAND SURVEYORS
 CORNWALL-WINCHESTER

