

- ALL WORK SHALL BE CARRIED OUT IN COMPLIANCE WITH THE ONTARIO OCCUPATIONAL HEALTH AND SAFETY ACT AND REGULATIONS FOR CONSTRUCTION PROJECTS.
- ALL WORK AND MATERIALS TO CONFORM WITH CURRENT MINISTRY OF THE ENVIRONMENT & ENERGY OF ONTARIO, CITY OF OTTAWA AND ONTARIO PROVINCIAL STANDARDS AND SPECIFICATIONS. LOCAL UTILITY STANDARDS AND MINISTRY OF TRANSPORTATION STANDARDS WILL APPLY WHERE REQUIRED.
- THE CONTRACTOR IS ADVISED THAT WORKS BY OTHERS MAY BE ONGOING DURING THE PERIOD OF THIS CONTRACT. THE CONTRACTOR SHALL COORDINATE CONSTRUCTION ACTIVITIES AND COORDINATION WITH ALL OTHER CONTRACTORS AND PREVENT CONSTRUCTION CONFLICTS.
- THE INFORMATION SHOWN FOR EXISTING UTILITIES WAS PROVIDED BY OTHERS. THE CONTRACTOR IS RESPONSIBLE FOR LOCATING AND VERIFYING ALL UTILITIES PRIOR TO COMMENCEMENT OF WORK. ANY VARIANCE IS TO BE IMMEDIATELY REPORTED TO THE ENGINEER. LOST TIME DUE TO FAILURE OF THE CONTRACTOR TO CONFIRM UTILITY LOCATIONS AND NOTIFY THE ENGINEER OF POSSIBLE CONFLICTS PRIOR TO CONSTRUCTION WILL BE AT THE CONTRACTORS EXPENSE.
- ALL CONSTRUCTION SHALL BE CARRIED OUT IN ACCORDANCE WITH THE RECOMMENDATIONS MADE IN THE GEOTECHNICAL REPORT.
- THE CONTRACTOR IS RESPONSIBLE FOR OBTAINING ALL PERMITS REQUIRED AND TO BEAR THE COST OF SAME INCLUDING WATER PERMIT AND ASSOCIATED COSTS.
- ALL DISTURBED AREAS SHALL BE RESTORED TO EQUAL OR BETTER CONDITION TO THE SATISFACTION OF THE ENGINEER AND THE CITY. PAYMENT REIMSTATEMENT FOR SERVICE AND UTILITY CUTS SHALL BE IN ACCORDANCE WITH OPSD 508.010 AND OPSD 310.
- FOR DETAILS RELATING TO STORMWATER MANAGEMENT AND ROOF DRAINAGE, SEE THE STORMWATER MANAGEMENT REPORT PREPARED BY STANTEC CONSULTING LTD. ROOF DRAINAGE TO BE PROVIDED VIA RESTRICTED RELEASE ROOF DRAINS AS DETAILED IN THE REPORT.
- BENCHMARKS: IT IS THE RESPONSIBILITY OF THE CONTRACTOR TO VERIFY THAT THE SITE BENCHMARK(S) HAS NOT BEEN ALTERED OR DISTURBED AND THAT ITS RELATIVE ELEVATION AND DESCRIPTION AGREES WITH THE INFORMATION SHOWN ON DRAWING GP-1.
- THE CONTRACTOR SHALL PROVIDE TO THE ENGINEER 1 (ONE) SET OF AS CONSTRUCTED SITE SERVING, GRADING, AND SITE ELECTRICAL DWGS.
- REFER TO DWG DS-1 (DETAIL SHEET) FOR ALL SPECIFICATIONS/DETAILS.
- FOUNDATION DRAINS AND SANITARY SERVICES TO BE EQUIPPED WITH SLUMP PUMPS.
- FINAL SERVING SIZES/LOCATIONS TO BE CONFIRMED BY MECHANICAL CONSULTANT

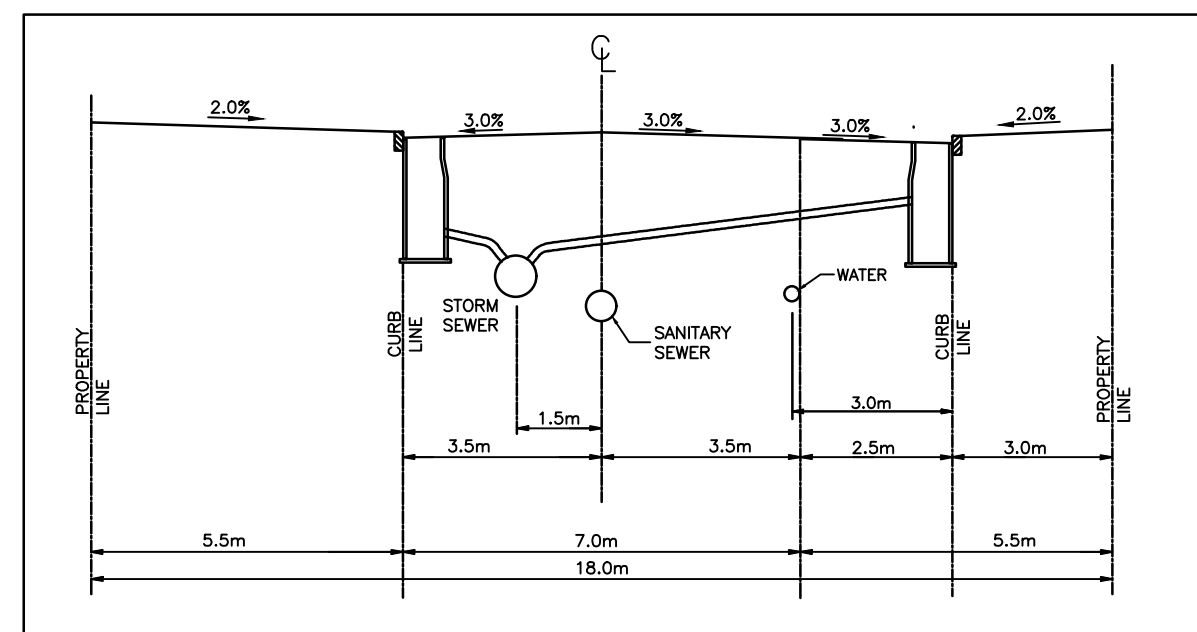
4	UPDATED AS PER REVISED SITE PLAN	J.P.	K.S.	18.06.14
3	CORRECTED RELOCATION OF FH	D.J.C.	K.S.	18.06.04
2	REVISED AS PER CITY COMMENTS	D.J.C.	K.S.	18.06.01
1	ISSUED FOR SFA	M.J.S.	K.S.	18.02.02
Revision		By	Appd.	YY.MM.DD
File Name: 160401053-PP1		M.J.S.	K.S.	M.J.S.
		Down.	Chkd.	Dign.
				YY.MM.DD

1879369 ONTARIO INC. COB AS
SAINT JOSEPH DEVELOPMENTS

MARKETPLACE AVENUE

Ottawa, ON

McGARRY TERRACE
STA. 0+120 TO STA. 0+240.05

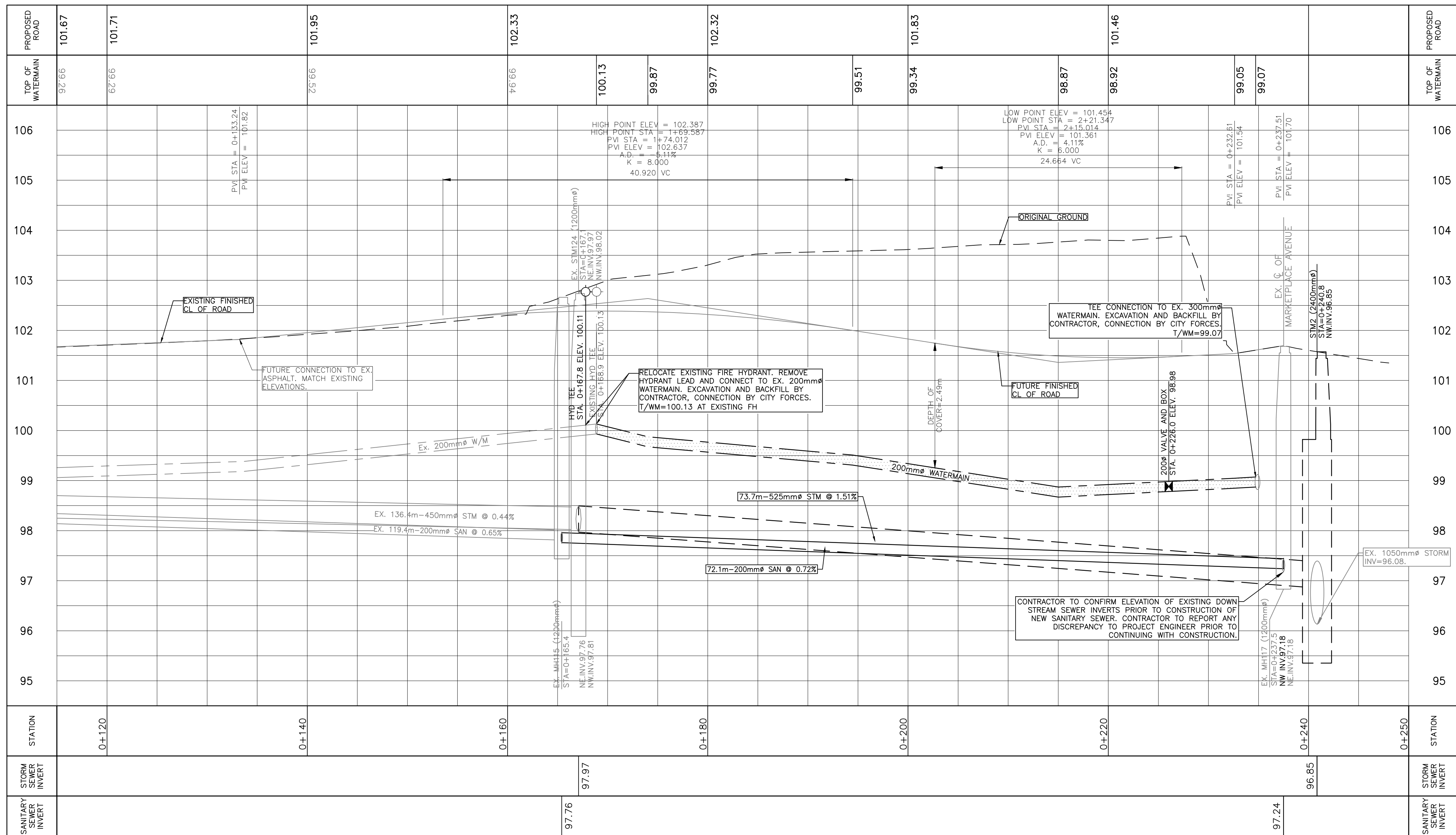
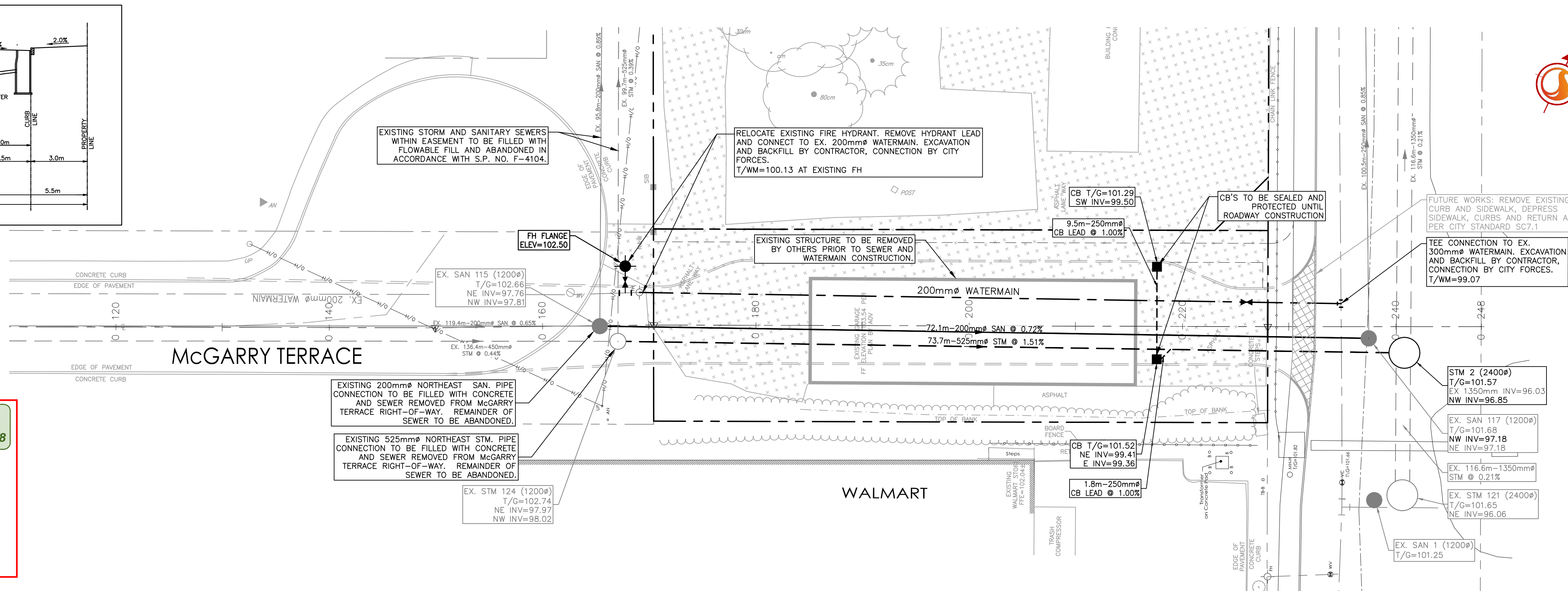


MCGARRY TERRACE
STA 0+170.5 to 0+228
18.0m ROAD ALLOWANCE
SCALE: NTS

APPROVED
By herweydo at 4:27 pm, Jul 25, 2018

Don Herweydo

DON HERWEYDO, MCIP, RPP
MANAGER, DEVELOPMENT REVIEW - SOUTH
PLANNING, INFRASTRUCTURE & ECONOMIC
DEVELOPMENT DEPARTMENT, CITY OF OTTAWA



STATION	0+120	0+140	0+160	0+180	0+200	0+220	0+240	0+250
STORM SEWER INVERT							96.85	
SANITARY SEWER INVERT			97.76				97.24	