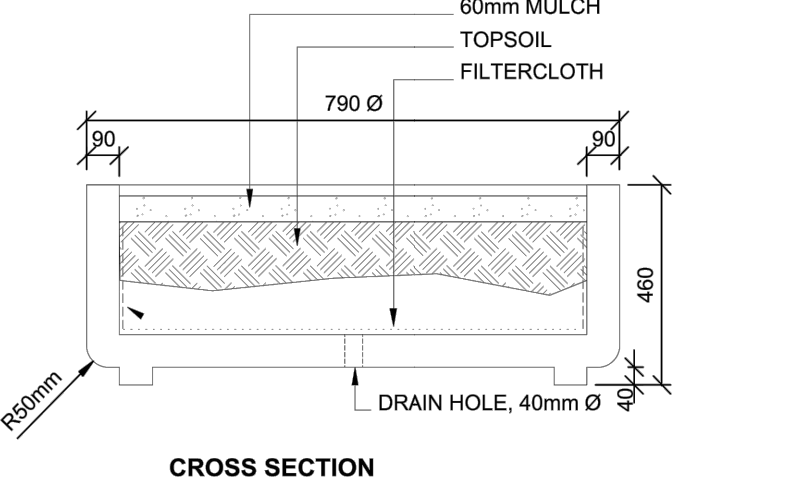
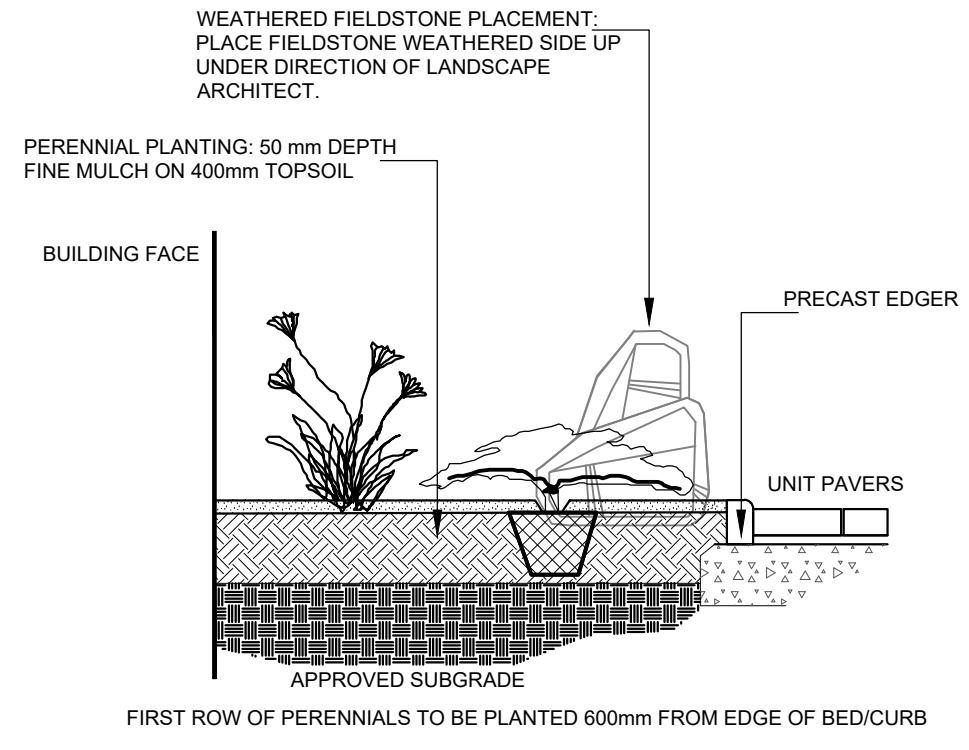


RECTANGULAR PRECAST PLANTER



CIRCULAR PRECAST PLANTER



ROCKERY WITH PERENNIALS

NOTE:  
DRAWING TO BE READ IN CONJUNCTION WITH TREE CONSERVATION REPORT.  
REFER TO TREE CONSERVATION REPORT FOR TREE PROTECTION MEASURES  
AND DETAILS.

PROPOSED LOCATION OF  
FUTURE TRAIL (3/4" GRAVEL)

SEED  
DISTURBED  
AREAS

SOD DISTURBED  
AREAS IN R.O.W.

RETAINING WALL  
REFER TO CIVIL

CRU  
465 sq m  
5000 sq ft

PAVERS TYPE 1

PAVERS TYPE 2

PAVERS TYPE 1

PAVERS TYPE 2

PAVERS TYPE 1

PAVERS TYPE 2

PAVERS TYPE 1

PAVERS TYPE 2

PAVERS TYPE 1

PAVERS TYPE 2

PAVERS TYPE 1

PAVERS TYPE 2

PAVERS TYPE 1

PAVERS TYPE 2

PAVERS TYPE 1

PAVERS TYPE 2

PAVERS TYPE 1

PAVERS TYPE 2

PAVERS TYPE 1

PAVERS TYPE 2

HOTEL BUILDING  
SIX STOREY.  
135 units

PRECAST PLANTERS

BIKE RACK

PRECAST PLANTERS

BIKE RACK

PRECAST PLANTERS

BIKE RACK

PRECAST PLANTERS

BIKE RACK

PRECAST PLANTERS

BIKE RACK

PRECAST PLANTERS

BIKE RACK

PRECAST PLANTERS

BIKE RACK

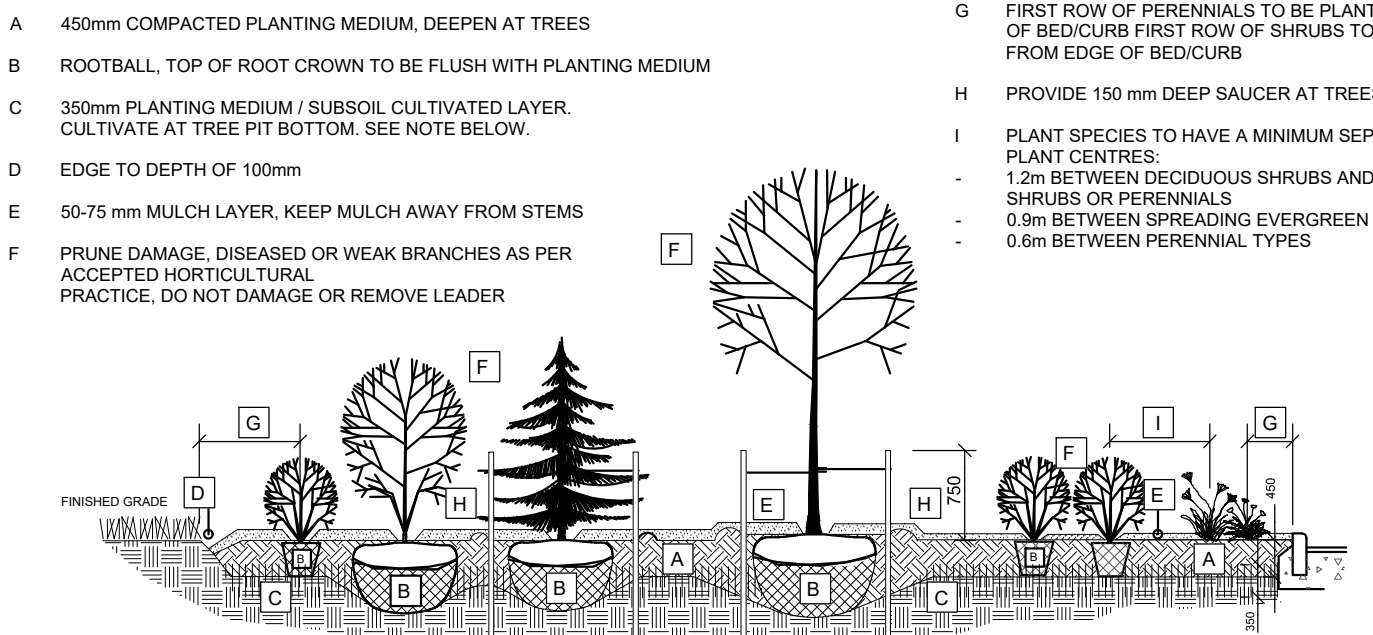
PRECAST PLANTERS

BIKE RACK

PRECAST PLANTERS

BIKE RACK

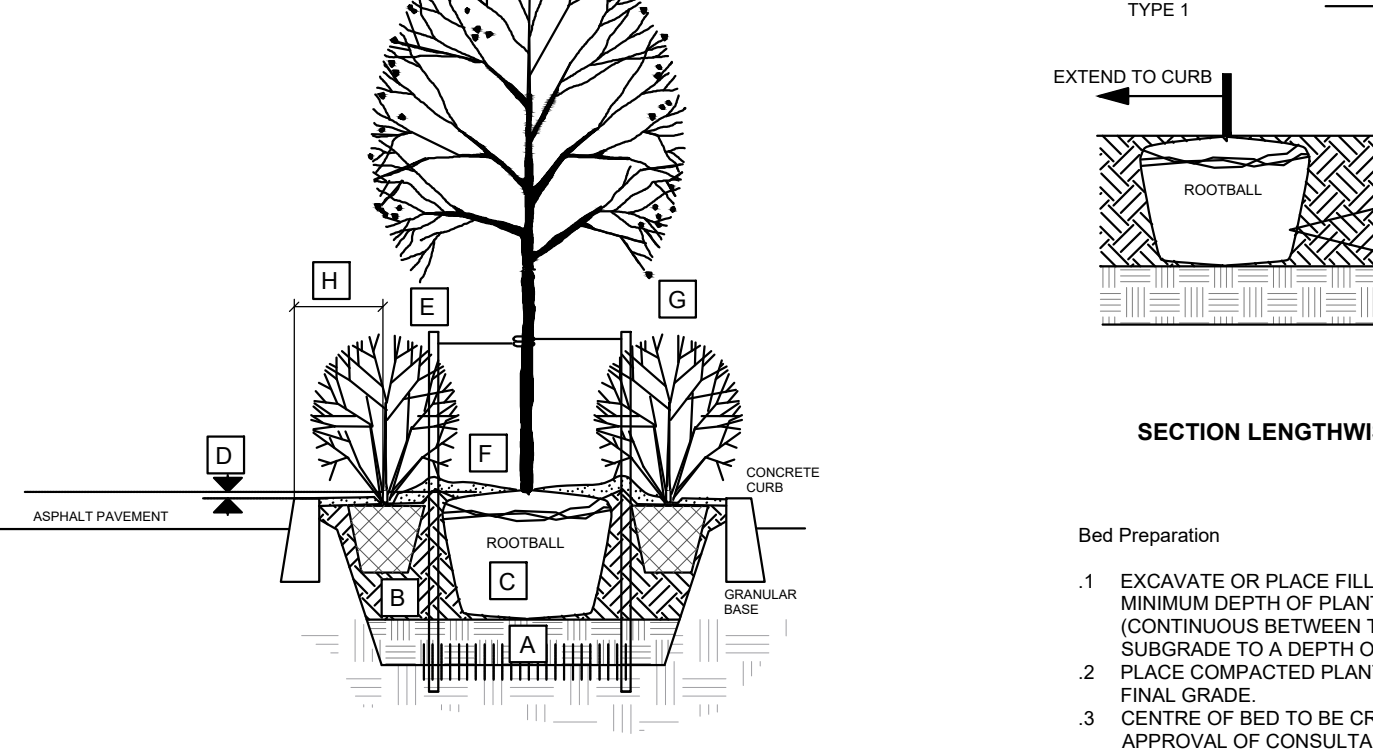
Plant List					
ID	Qty	Botanical Name	Common Name	Scheduled Size	Remarks
<b>Trees</b>					
AsBC	3	Acer saccharum 'Barrett Cole'	Apollo Sugar Maple	50mm cal.	WB, Staked
CoPS	7	Celtis occidentalis 'Prairie Sentinel'	Prairie Sentinel Hackberry	70mm cal.	WB, Staked
GIS	5	Gleditsia triacanthos 'Shademaster'	Shademaster Honeylocust	70mm cal.	WB, Staked
MHG	2	Malus x 'Harvest Gold'	Harvest Gold Crabapple	60mm cal.	WB, Staked
PpFA	1	Picea pungens 'Fat Albert'	Fat Albert Spruce	1750mm ht.	B&B / Potted
Qr	3	Quercus rubra	Red Oak	70mm caliper	B&B, Staked
<b>Large Shrubs</b>					
Aa	3	Amelanchier alnifolia	Saskatoon Berry	125cm ht.	B&B / Potted
JvBA	14	Juniperus scopulorum 'Blue Arrow'	Blue Arrow Juniper	125cm ht.	B&B / Potted
PaN	1	Picea abies 'Nidiformis'	Dwarf Nest Spruce	50cm spd.	B&B / Potted
Sp	5	Syringa prestoniae	Preston Lilac	125cm ht.	Potted
ToF	8	Thuja occidentalis fastigiata	Pyramidal White Cedar	125cm ht.	B&B / Potted
<b>Shrubs</b>					
HpFI	4	Hydrangea Fire and Ice	Hydrangea Fire and Ice	50cm ht.	Potted
PfF	180	Potentilla fruticosa 'Farreri'	Gold Drop Potentilla	50cm ht.	Potted
SbF	155	Spiraea bumalda 'Froebelii'	Froebel's Spirea	50cm ht.	Potted
SnS	80	Spiraea nipponica 'Snowmound'	Snowmound Spirea	50cm ht.	Potted, 0.9m o.c.
<b>Perennials</b>					
CaKF	54	Calamagrostis acutifolia 'Karl Foerster'	Karl Foerster Feather Reed Grass	1 gallon Pot	80cm o.c.
CaO	77	Calamagrostis acutifolia 'Overdam'	Overdam Feather Reed Grass	1 gallon Pot	80cm o.c.
PvA	75	Flowering perennials Type 1		150mm Pot	60cm o.c.
PvB	95	Flowering perennials Type 2		150mm Pot	60cm o.c.
PvHM	60	Panicum virgatum 'Heavy Metal'	Heavy Metal Switch Grass	1 gallon Pot	75cm o.c.



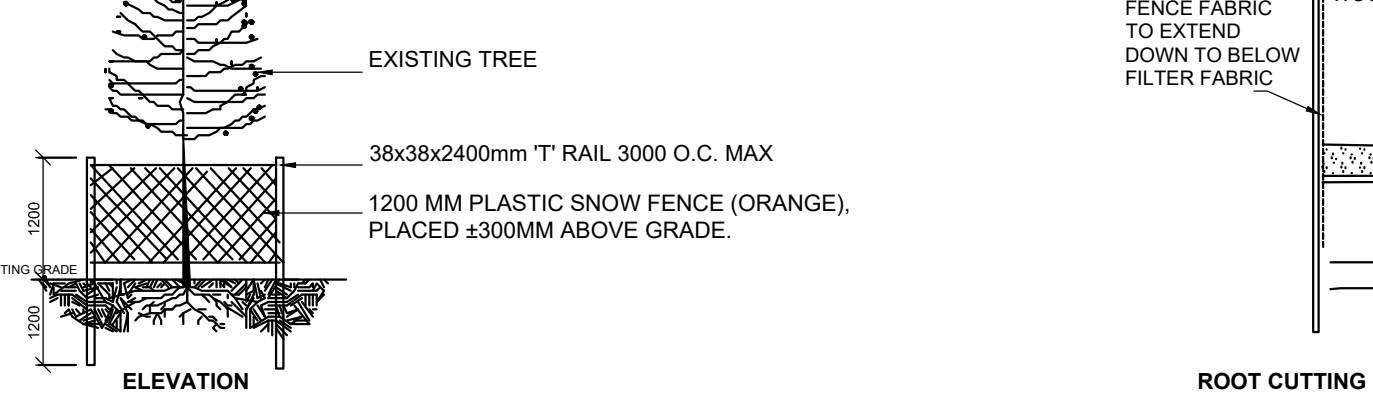
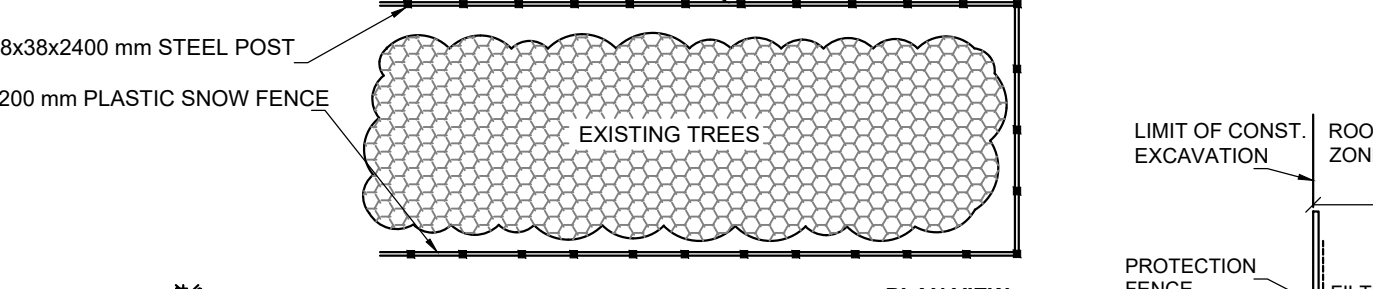
- NOTE:
1. EXCAVATE OR PLACE FILL FOR PLANTING BED TO PROVIDE 400mm MINIMUM DEPTH OF PLANTING MEDIUM. PLANTING BED TO BE DEEPER AT TREE LOCATIONS.
  2. PLACE 300mm DEEP SUBSOIL OVER EXCAVATED AREA TO PROPER LEVEL WITH COMPACTED PLANTING MEDIUM.
  3. PLACE 150mm DEEP MULCH LAYER ON SUBSOIL AND CULTIVATE INTO TOP 200mm OF PLANTING MEDIUM. SEE NOTE BELOW.
  4. PLACE REMAINDER OF PLANTING MEDIUM OVER CULTIVATED PORTION TO ACHIEVE FINAL GRADE.
  5. CENTRE OF BED TO BE CROWNED ABOVE ADJACENT GRADE TO APPROVAL OF CONSULTANT.
  6. ENSURE POSITIVE DRAINAGE AWAY FROM BUILDING WALLS WHERE APPLICABLE.
- PLANTING BED DETAIL ON GRADE

PLANTING BED AREAS: EXCAVATE TO 500mm BELOW FINAL GRADE TO ACHIEVE ROUGH GRADE ELEVATION. WHERE GRAVEL IS ENCOUNTERED ROUGH GRADE LEVEL TO BE 1000mm BELOW FINAL GRADE. PLACE APPROVED SUBSOIL IN THESE LOCATIONS TO OBTAIN PLANTING MEDIUM DEPTH. PLACEMENT OF SUBSOIL TO BE PAID AT UNIT PRICE PER m<sup>3</sup> OF SUBSOIL PLACED MEASURED ON SITE.

- A SUBSOIL / SUBGRADE CULTIVATED LAYER  
B PLANTING MEDIUM  
C ROOTBALL / POT  
D TOP OF ROOT CROWN TO BE FLUSH WITH PLANTING SOIL  
E 2 METAL POSTS (40x40x2100mm) PLACE AT OUTSIDE OF ROOTBALL AND FASTEN TO TRUNK WITH APPROVED TREE TIES  
F 3mm GALVANIZED WIRE AND 25mm 2-PLY REINFORCED ROSE (PARALLEL TO CURB)  
G 50-75mm MULCH LAYER, KEEP MULCH AWAY FROM STEMS AND PROVIDE 100mm DEEP SAUCER  
H PRUNE DAMAGE, DISEASED OR WEAK BRANCHES AS PER ACCEPTED HORTICULTURAL PRACTICE. DO NOT DAMAGE OR REMOVE LEADER  
I FIRST ROW OF SHRUBS TO BE PLANTED 600mm MINIMUM FROM FRONT OF CURB (AT TREE LOCATIONS, 900mm ELSEWHERE)

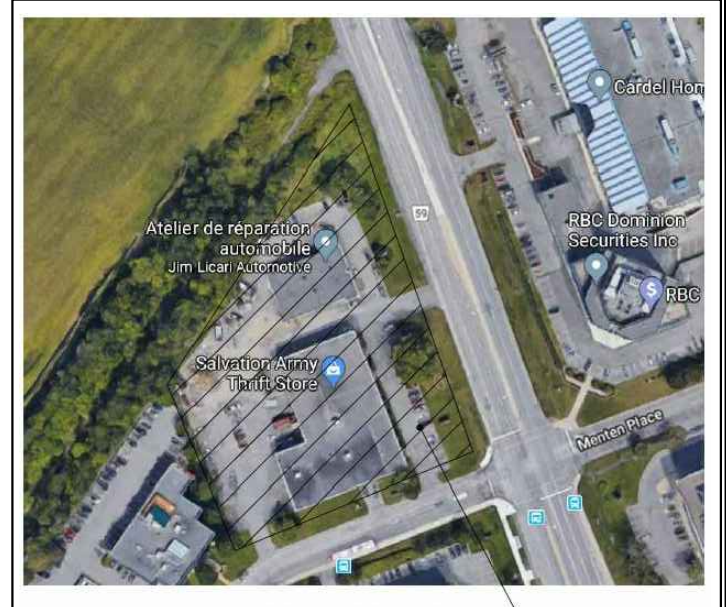


PLANTING IN MEDIAN



- NOTES:
1. PROVIDE PROTECTION FOR TREES SHOWN AS REQUIRING PROTECTION ON CONTRACT DRAWINGS USING METHOD SHOWN. WHERE OPERATIONS THREATEN OTHER NEARBY TREES, APPLY SAME MEASURES.
  2. PROTECT ROOTS OF ALL TREES AS SHOWN ABOVE. NO EXCAVATION, FILLING, STORAGE OF MATERIALS, DISPOSAL OF CHEMICALS, VEHICLE TRAFFIC, OR OTHER ACTIVITY WHICH COULD CAUSE DISTURBANCE OF SOIL ROOT AREA, INCLUDING SOIL COMPACTION SHALL TAKE PLACE WITHIN THE PROTECTED AREA.
- THE CITY OF OTTAWA TREES BY-LAW REQUIRES THAT CONTRACTORS WORKING NEAR TREES MUST:
- NOT PLACE ANY MATERIAL OR EQUIPMENT WITHIN THE CRZ OF THE TREE;
  - NOT RAISE OR LOWER THE EXISTING GRADE WITHIN THE CRZ WITHOUT APPROVAL;
  - TUNNEL OR BORE WHEN DIGGING WITHIN THE CRZ OF A TREE;
  - NOT DAMAGE THE ROOT SYSTEM, TRUNK OR BRANCHES OF ANY TREE;
  - ENSURE THAT EXHAUST FUMES FROM ALL EQUIPMENT ARE NOT DIRECTED TOWARDS ANY TREE'S CANOPY.
- CRITICAL ROOT ZONE (CRZ) OF A TREE:  
D (DIAMETER OF TRUNK IN CENTIMETERS) X 10CM = CRITICAL ROOT ZONE. THE CRITICAL ROOT ZONE IS ESTABLISHED AS BEING 10 CENTIMETRES FROM THE TRUNK OF A TREE FOR EVERY CENTIMETRE OF TRUNK DIAMETER. THE TRUNK DIAMETER IS MEASURED AT A HEIGHT OF 1.2 METRES FOR TREES OF 15 CENTIMETRES DIAMETER AND GREATER AND AT A HEIGHT OF 0.3 METRES FOR TREES OF LESS THAN 15 CENTIMETRES DIAMETER. THE CONTRACTOR MUST OBTAIN ALL PERMITS AND APPROVALS PRIOR TO THE START OF CONSTRUCTION. THE CONTRACTOR MUST CALL A CITY TREE INSPECTOR WHEN WORK IS REQUIRED NEAR A CITY TREE.

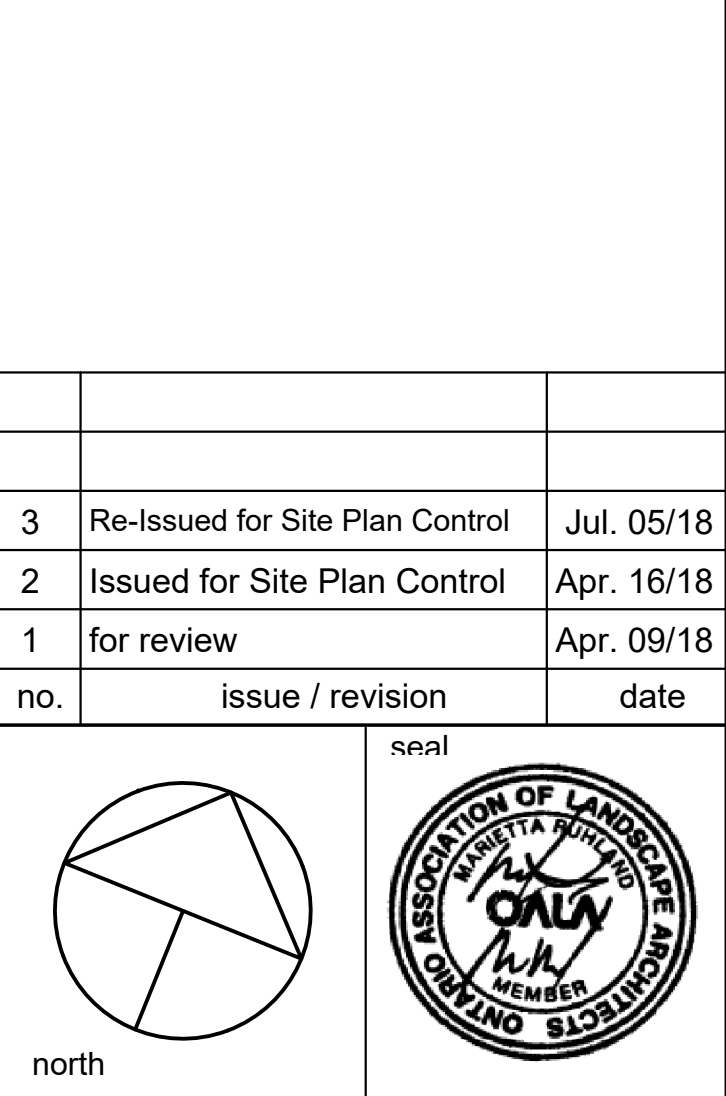
TREE PROTECTION AND ROOT CUTTING DETAIL



KEY PLAN

THIS PLAN IS ISSUED FOR SITE PLAN CONTROL ONLY.  
ADDITIONAL DETAILING AND SPECIFICATIONS ARE  
REQUIRED PRIOR TO TENDERING AND CONSTRUCTION.

no.	issue / revision	date
3	Re-issued for Site Plan Control	Jul. 05/18
2	Issued for Site Plan Control	Apr. 16/18
1	for review	Apr. 09/18



HILTON WORLDWIDE



Colonnade  
DEVELOPMENT • CONSTRUCTION • MANAGEMENT

COLONNADE  
BRIDGEPORT  
Property Investment & Management

SiteCast™  
Construction Corp.

WOODMAN ARCHITECT  
ASSOCIATES LTD.  
4 BEECHWOOD, SUITE 201, OTTAWA, ONTARIO, CANADA K1L 8J9  
TEL: 613 228 9850 FAX: 613 228 9848 mailbox@woodmanarchitect.com

Ruhland & Associates Ltd.  
200-1750 Courtwood Crescent, Ottawa, Ontario K3C 2B5  
P (613) 224-4244 x332 F (613) 224-4131 info@ra.ca www.ra.ca

HAMPTON INN  
300 MOODIE DR.

LANDSCAPE PLAN		
scale	drawn by	designed by
1:200	M. Malkov	R. Ruhland
date	checked by	plot date
October, 2016	R. Ruhland	Jun. 29/18
project number	drawing number	
18 - 1556	L - 01	

Contractor to check and verify all dimensions on the job