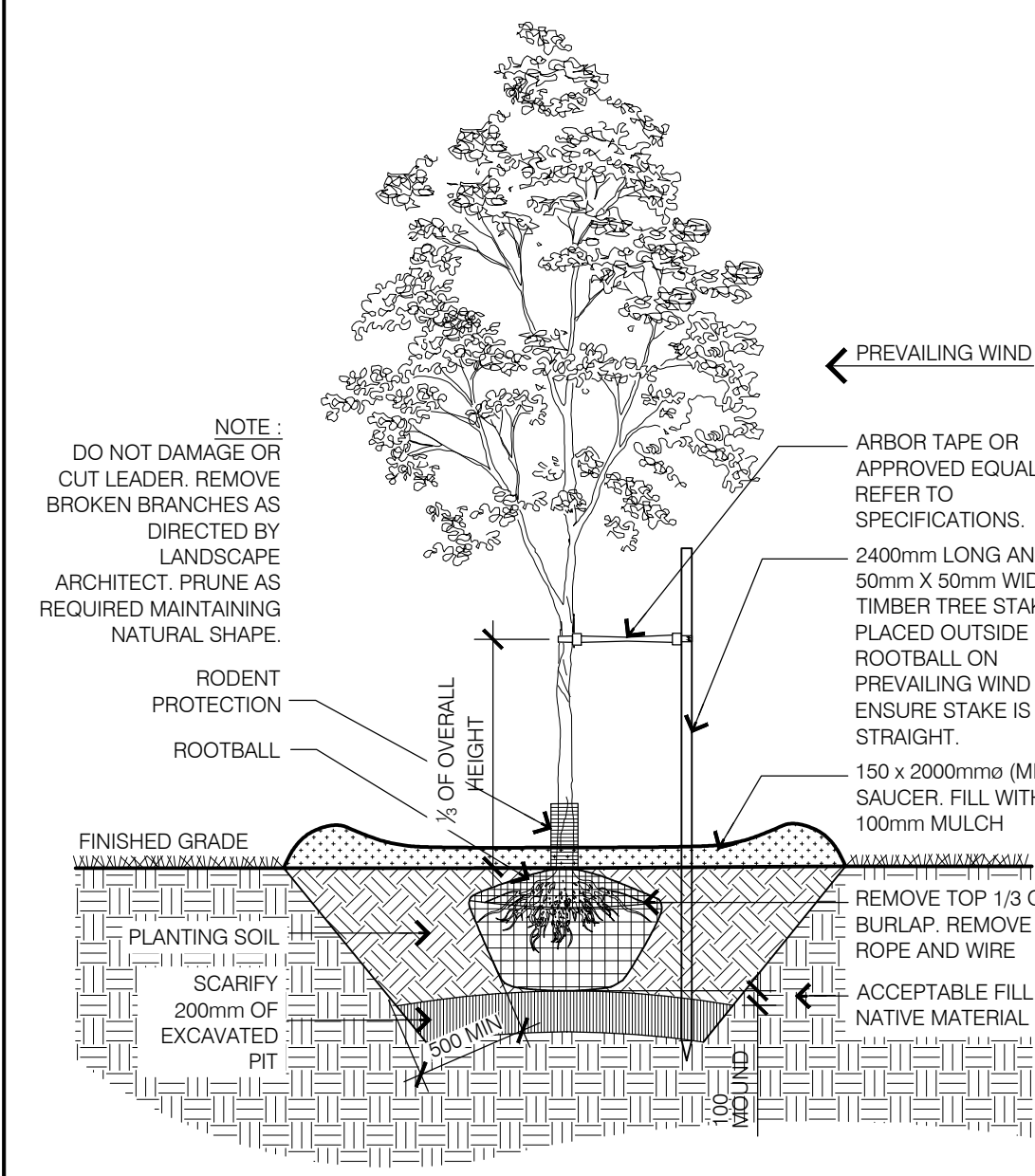
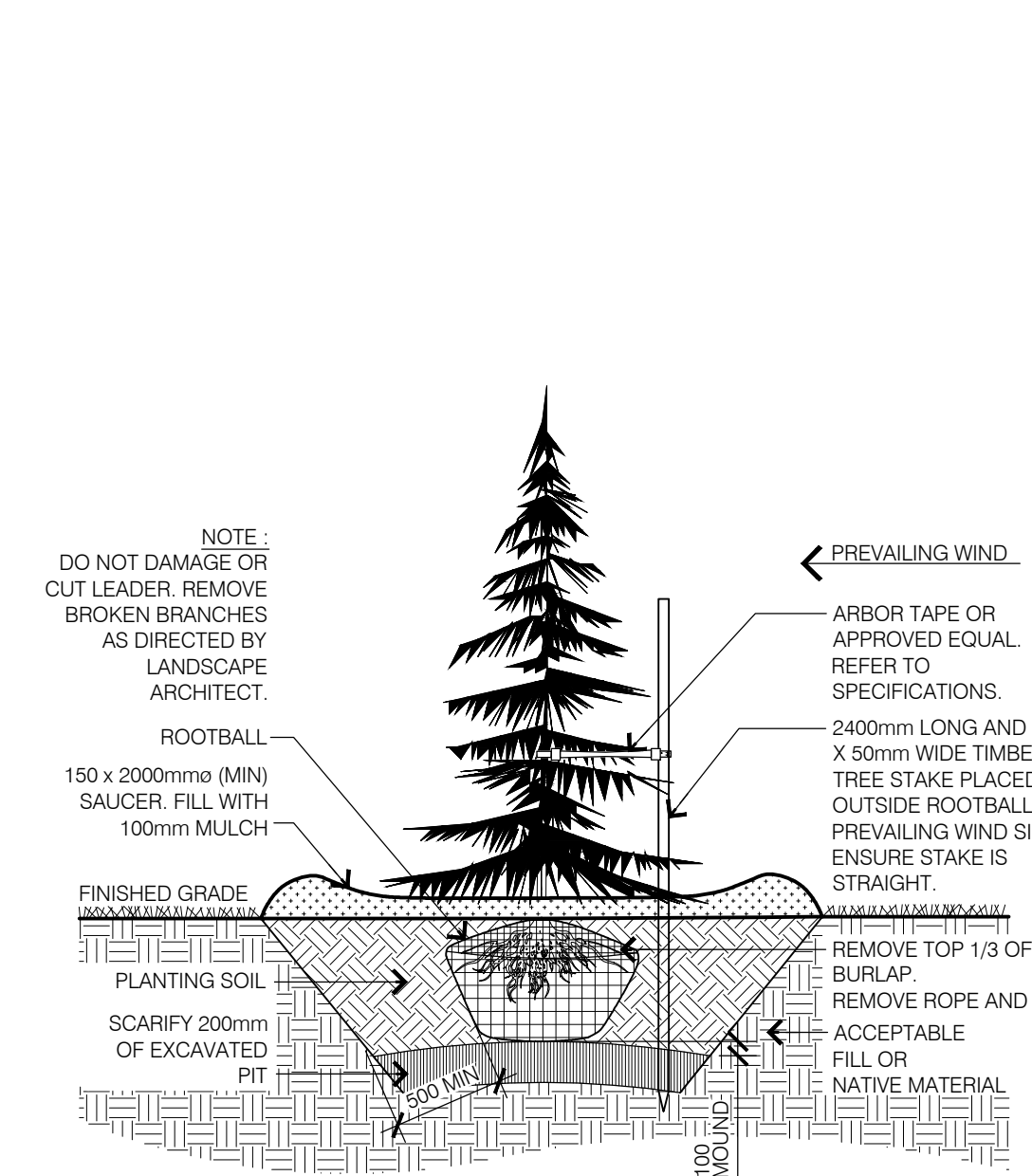


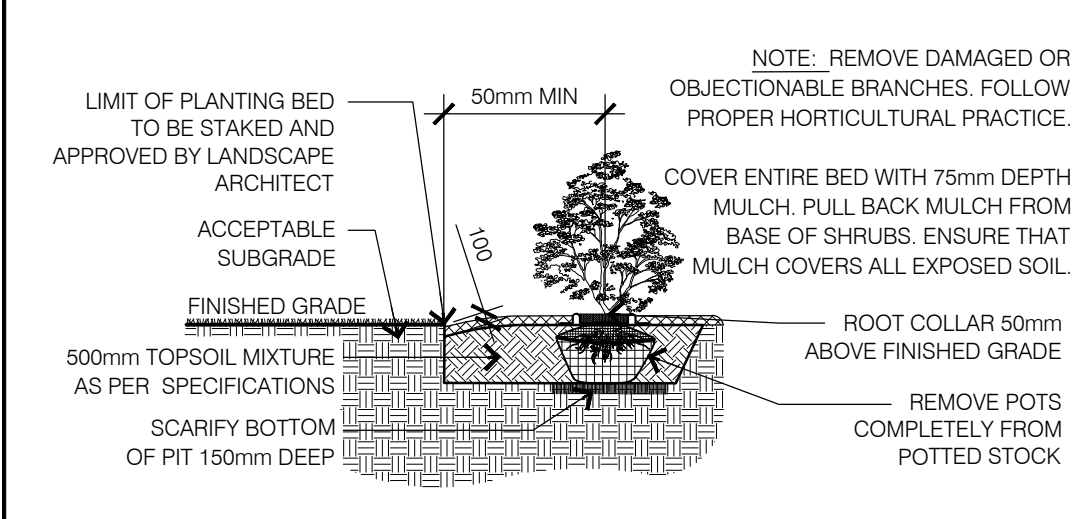
1 LANDSCAPE PLAN-PHASE 2



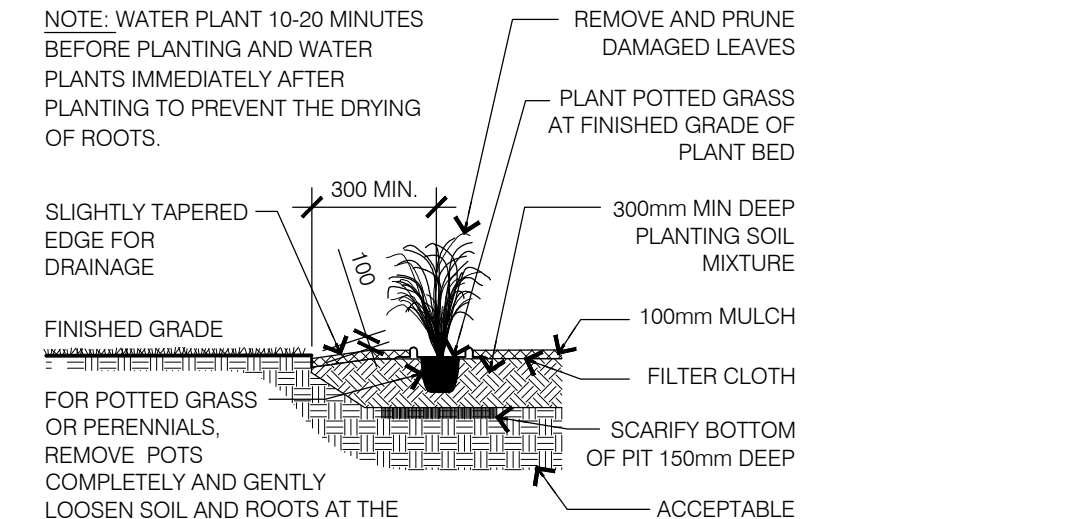
2 DECIDUOUS TREE PLANTING



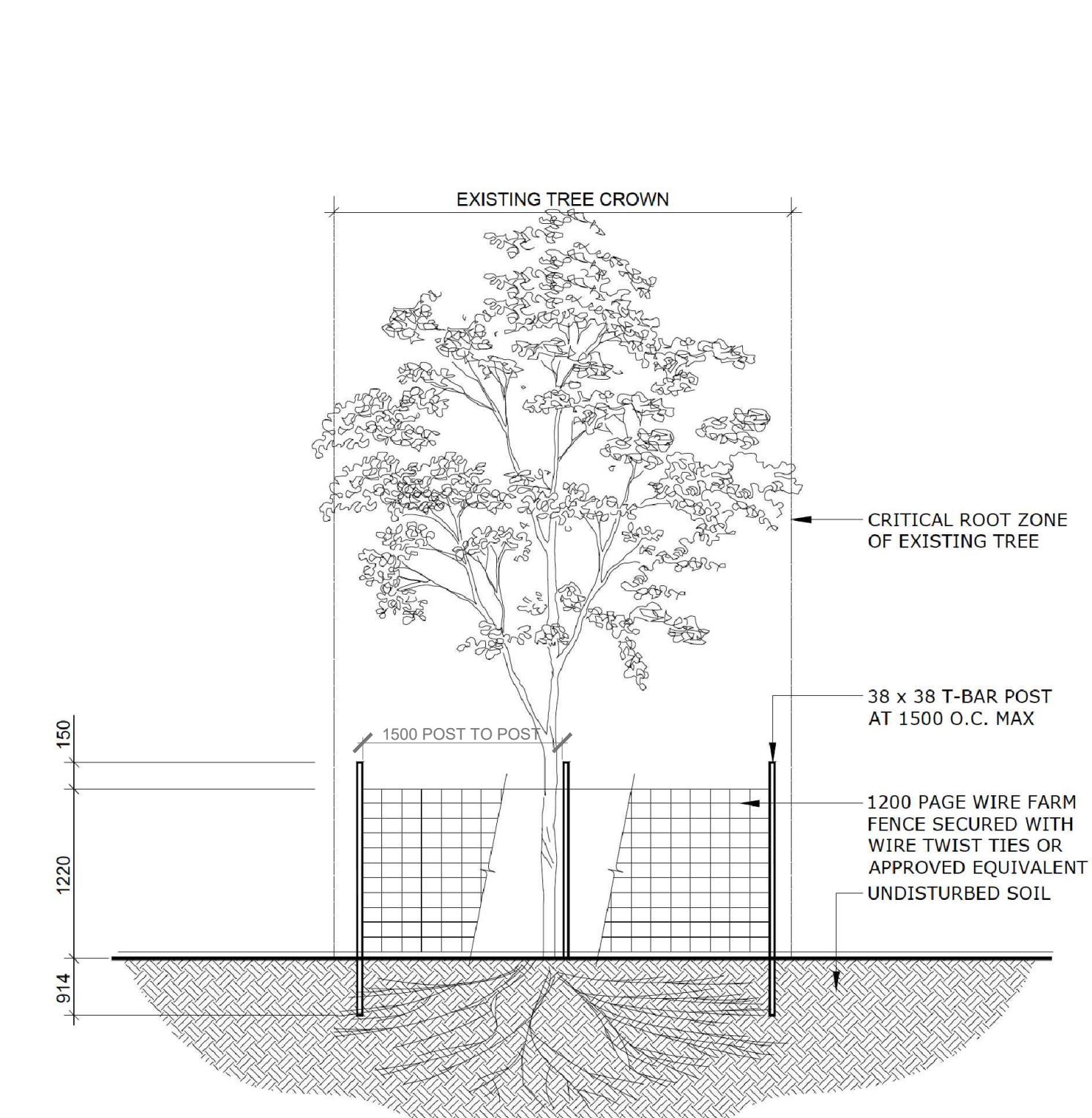
3 CONIFEROUS TREE PLANTING



4 SHRUB PLANTING



5 PERENNIAL PLANTING



6 TREE PROTECTION FENCING

TREE INVENTORY			
NO.	SPECIES	SIZE (DBH)	HEALTH + CONDITION
9	WHITE SPRUCE / <i>Picea glauca</i>	19CM	GOOD/FAIR
14	WHITE SPRUCE / <i>Picea glauca</i>	26CM	GOOD, ADJACENT PRIVATE PROPERTY
15	WHITE SPRUCE / <i>Picea glauca</i>	30CM	GOOD, ADJACENT PRIVATE PROPERTY
16	WHITE SPRUCE / <i>Picea glauca</i>	31CM	GOOD, ADJACENT PRIVATE PROPERTY
17	WHITE SPRUCE / <i>Picea glauca</i>	29CM	GOOD, ADJACENT PRIVATE PROPERTY
18	WHITE SPRUCE / <i>Picea glauca</i>	22CM	GOOD, ADJACENT PRIVATE PROPERTY
19	WHITE SPRUCE / <i>Picea glauca</i>	21CM	GOOD, ADJACENT PRIVATE PROPERTY
20	WHITE SPRUCE / <i>Picea glauca</i>	36CM	GOOD, ADJACENT PRIVATE PROPERTY
21	WHITE SPRUCE / <i>Picea glauca</i>	22CM	GOOD, ADJACENT PRIVATE PROPERTY
22	WHITE SPRUCE / <i>Picea glauca</i>	36CM	GOOD, ADJACENT PRIVATE PROPERTY
23	WHITE SPRUCE / <i>Picea glauca</i>	38CM	GOOD, ADJACENT PRIVATE PROPERTY
24	WHITE SPRUCE / <i>Picea glauca</i>	28CM	GOOD, ADJACENT PRIVATE PROPERTY
25	WHITE SPRUCE / <i>Picea glauca</i>	32CM	GOOD, ADJACENT PRIVATE PROPERTY
26	WHITE SPRUCE / <i>Picea glauca</i>	25CM	GOOD, ADJACENT PRIVATE PROPERTY
27	WHITE SPRUCE / <i>Picea glauca</i>	29CM	FAIR, ADJACENT PRIVATE PROPERTY
28	WHITE SPRUCE / <i>Picea glauca</i>	28CM	GOOD, ADJACENT PRIVATE PROPERTY
29	WHITE SPRUCE / <i>Picea glauca</i>	30CM	GOOD, ADJACENT PRIVATE PROPERTY
30	WHITE SPRUCE / <i>Picea glauca</i>	30CM	FAIR, ADJACENT PRIVATE PROPERTY
31	WHITE SPRUCE / <i>Picea glauca</i>	26CM	GOOD
32	WHITE SPRUCE / <i>Picea glauca</i>	31CM	GOOD
33	WHITE SPRUCE / <i>Picea glauca</i>	31CM	GOOD
34	WHITE SPRUCE / <i>Picea glauca</i>	29CM	FAIR
35	WHITE SPRUCE / <i>Picea glauca</i>	29CM	GOOD
36	WHITE SPRUCE / <i>Picea glauca</i>	31CM	GOOD
37	WHITE SPRUCE / <i>Picea glauca</i>	31CM	GOOD
38	WHITE SPRUCE / <i>Picea glauca</i>	31CM	FAIR
39	WHITE SPRUCE / <i>Picea glauca</i>	27CM	GOOD
40	WHITE SPRUCE / <i>Picea glauca</i>	34CM	GOOD
41	WHITE SPRUCE / <i>Picea glauca</i>	29CM	GOOD
42	WHITE SPRUCE / <i>Picea glauca</i>	29CM	FAIR
43	WHITE SPRUCE / <i>Picea glauca</i>	29CM	GOOD
44	WHITE SPRUCE / <i>Picea glauca</i>	28CM	GOOD
45	WHITE SPRUCE / <i>Picea glauca</i>	28CM	FAIR
47	WHITE SPRUCE / <i>Picea glauca</i>	29CM	GOOD
48	WHITE SPRUCE / <i>Picea glauca</i>	38CM	GOOD
49	WHITE SPRUCE / <i>Picea glauca</i>	30CM	GOOD
50	WHITE SPRUCE / <i>Picea glauca</i>	30CM	GOOD
51	WHITE SPRUCE / <i>Picea glauca</i>	30CM	FAIR
52	WHITE SPRUCE / <i>Picea glauca</i>	31CM	FAIR
53	WHITE SPRUCE / <i>Picea glauca</i>	29CM	FAIR
54	WHITE SPRUCE / <i>Picea glauca</i>	35CM	FAIR
55	WHITE SPRUCE / <i>Picea glauca</i>	31CM	FAIR
56	WHITE SPRUCE / <i>Picea glauca</i>	30CM	GOOD
58	MANITOBA MAPLE / <i>Acer negundo</i>	18CM	GOOD
60	MANITOBA MAPLE / <i>Acer negundo</i>	29CM	GOOD-MINOR LOWER LIMB DIEBACK
78	WHITE CEDAR / <i>Thuja occidentalis</i>		GOOD

TREES TO BE REMOVED IN PHASE 2			
NO.	SPECIES	SIZE (DBH)	HEALTH + CONDITION
1	ASH / <i>Fraxinus</i> spp.	28CM	POOR
2	ASH / <i>Fraxinus</i> spp.	27CM	POOR
3	ASH / <i>Fraxinus</i> spp.	24CM	POOR
4	RED PINE / <i>Pinus resinosa</i>	23CM	FAIR/DIEBACK/FALLING BRANCHES
5	RED PINE / <i>Pinus resinosa</i>	19CM	FAIR/DIEBACK
6	RED PINE / <i>Pinus resinosa</i>	22CM	FAIR/DIEBACK
7	RED PINE / <i>Pinus resinosa</i>	26CM	FAIR
8	RED PINE / <i>Pinus resinosa</i>	18CM	FAIR
10	ASH / <i>Fraxinus</i> spp.	27CM	POOR
11	ASH / <i>Fraxinus</i> spp.	31CM	POOR
12	WHITE SPRUCE / <i>Picea glauca</i>	29CM	GOOD
13	WHITE SPRUCE / <i>Picea glauca</i>	34CM	GOOD
36	WHITE SPRUCE / <i>Picea glauca</i>	31CM	GOOD
67	WHITE SPRUCE / <i>Picea glauca</i>	28CM	GOOD
72	CRABAPPLE / <i>Malus</i> spp.	17	FAIR
75	ASH / <i>Fraxinus</i> spp.	39CM	POOR
76	RED PINE / <i>Pinus resinosa</i>	21CM	POOR
77	RED PINE / <i>Pinus resinosa</i>	22CM	FAIR

GENERAL PLANT LIST PHASE 1 AND PHASE 2							
PHASE	KEY	QTY	BOTANICAL NAME	COMMON NAME	SIZE	COMMENTS	SPACING O.C.
EVERGREENS							
1	To	30	<i>Thuja occidentalis</i>	Eastern White Cedar	80cm; 1GAL	POTTED	700mm
DECIDUOUS TREES							
2	As	1	<i>Amelanchier laevis</i>	Allegheny Serviceberry	48mm	W.B.	
2	Co	2	<i>Celtis occidentalis</i>	Common Hackberry	45mm	W.B.	
2	Pu	3	<i>Pyrus x ussuriensis</i> 'Ure'	Ure Pear	45mm	W.B.	
2	Sr	3	<i>Syringa meyeri</i>	Meyer Lilac	100cm High	TREE FORM, W.B.	
SHRUBS							
2	Bx	34	<i>Buxus</i> x 'Green Gem'	Green Gem Boxwood	1GAL	POTTED	800mm
2	Ds	30	<i>Dienella sessilifolia</i> 'Cool Splash'	Cool Splash Honeysuckle	2GAL	POTTED	1000mm
2	Ea	14	<i>Eucynurus alatus</i> 'Little mosses'	Little Mosses Burning Bush	60cm; 3GAL	POTTED	1000mm
2	Ig	14	<i>Ilex glabra</i> 'Compacta'	Compact Inkberry	50cm; 3GAL	POTTED	800mm
2	Js	23	<i>Juniperus sabina</i> 'Calgary Carpet'	Calgary Carpet Juniper	3GAL	POTTED	800mm
2	Ra	13	<i>Rhus aromatica</i> 'Gro-Low'	Fragrant Sumac	1GAL	POTTED	1500mm
2	Sr	3	<i>Syringa meyeri</i>	Meyer Lilac	100cm High	TREE FORM, W.B.	
PERENNIALS							
2	Hs	42	<i>Heemerocallis</i> 'stella d'oro'	Stella D'oro Daylily	1GAL	POTTED	500mm
2	As	61	<i>Asiathe chinensis</i> 'Vision in White'	Chinese Asilibe	1GAL	POTTED	500mm
GRASSES							
1	Ca	7	<i>Calamagrostis acutiflora</i> 'Karl Foerster'	Feather Reed Grass	1GAL	POTTED	700mm

GENERAL NOTES

- Contractor shall verify all dimensions on site and shall report any discrepancies to the architect prior to commencement of work.
- Contractor must comply with all codes and bylaws and other regulations by authorities having jurisdiction over the work.
- Do not scale this drawing.
- This drawing may not be used for construction unless sealed/signed by architect.
- Copyright of this drawings is reserved.

GENERAL NOTES

- All general site information and conditions compiled from survey and Architectural site plan by A Plus Architecture.
- Do not scale this drawing.
- Report any discrepancies prior to commencing work. No responsibility is born by the Landscape Architect for unknown subsurface conditions.
- Contractor to check and verify all dimensions on site and report any errors and/or omissions.
- Reinstall all areas and items damaged as a result of construction activities.
- Drawing may not be used for construction until signed by Landscape Architect as issued for construction.
- The accuracy of the position of utilities is not guaranteed.
- Individual utility co. must be contacted for confirmation of utility existence and location prior to digging.
- This drawing is an instrument of service and requires the permission of the Landscape Architect for use. Copyright is reserved by Lashley+Associates corporation.

LANDSCAPING NOTES

- Plant material shall be No. 1 Grade and shall comply with the Metric Guide Specifications for Nursery stock (latest edition), published by Canadian Nursery Trades Association.
- Plant substitutions shall not be permitted unless approved by the Landscape Architect.
- Turf areas shall be No. 1 Nursery grade sod conforming to the Canadian Nursery Sod Growers Specifications, installed on min. 150mm topsoil over scarified acceptable subgrade.
- Contractor shall guarantee all plant material for a period of one (1) full year from the date of substantial completion.
- Obtain approval of planting prior to digging.
- All plant beds shall be mulched with 75mm composted pine bark mulch.
- Topsoil shall be garden silt mixture sandy loam with min. 5% organic matter and peat moss added at ratio of 1-10, topsoil to be approved by Landscape Architect.

APPROVED ☒ REFUSED ☐

THIS _____ DAY OF _____ 20____

DERRICK MOODIE MANAGER
DEVELOPMENT REVIEW WEST
PLANNING, INFRASTRUCTURE AND ECONOMIC
DEVELOPMENT DEPARTMENT, CITY OF OTTAWA

ORIENTATION

SEAL

LASHLEY ASSOCIATES
LANDSCAPE ARCHITECTURE
AND SITE ENGINEERING

2200 KANATA AVENUE
OTTAWA, ON K1V 2K8
P 613 233 4667
E info@lashley.com

CLIENT

KANATA MUSLIM ASSOCIATION

PROJECT

KMA MOSQUE AND COMMUNITY CENTER
351 SANDHILL ROAD
KANATA, ON K2K 1X7

DRAWING TITLE

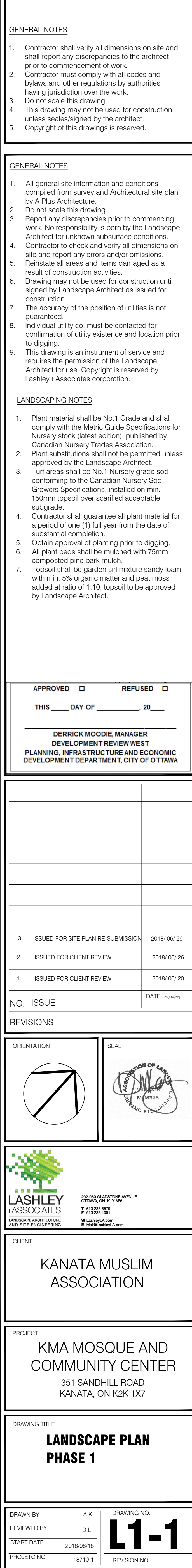
LANDSCAPE PLAN
PHASE 2

DRAWN BY A.K.
REVIEWED BY D.L.
START DATE 2018/06/18
PROJECT NO. 18710-1

DRAWING NO.
L1-2
REVISION NO.

SHEET SIZE: ARCH E1 30" X 42" (762mm X 1066.8mm) | PLOT DATE: June 29, 2018

#17532



NO.	SPECIES	SIZE (DBH)	HEALTH + CONDITION
34	WHITE SPRUCE / <i>Picea glauca</i>	28CM	GOOD
35	WHITE SPRUCE / <i>Picea glauca</i>	28CM	GOOD
36	WHITE SPRUCE / <i>Picea glauca</i>	31CM	GOOD
37	WHITE SPRUCE / <i>Picea glauca</i>	31CM	GOOD
38	WHITE SPRUCE / <i>Picea glauca</i>	31CM	FAIR
39	WHITE SPRUCE / <i>Picea glauca</i>	27CM	GOOD
40	WHITE SPRUCE / <i>Picea glauca</i>	32CM	GOOD
41	WHITE SPRUCE / <i>Picea glauca</i>	29CM	GOOD
42	WHITE SPRUCE / <i>Picea glauca</i>	29CM	FAIR
43	WHITE SPRUCE / <i>Picea glauca</i>	30CM	GOOD
44	WHITE SPRUCE / <i>Picea glauca</i>	28CM	GOOD
45	WHITE SPRUCE / <i>Picea glauca</i>	28CM	FAIR
46	WHITE SPRUCE / <i>Picea glauca</i>	29CM	GOOD
47	WHITE SPRUCE / <i>Picea glauca</i>	30CM	GOOD
48	WHITE SPRUCE / <i>Picea glauca</i>	30CM	GOOD
50	WHITE SPRUCE / <i>Picea glauca</i>	30CM	GOOD
51	WHITE SPRUCE / <i>Picea glauca</i>	30CM	FAIR
52	WHITE SPRUCE / <i>Picea glauca</i>	31CM	FAIR
63	WHITE SPRUCE / <i>Picea glauca</i>	29CM	FAIR
54	WHITE SPRUCE / <i>Picea glauca</i>	35CM	FAIR
55	WHITE SPRUCE / <i>Picea glauca</i>	31CM	FAIR
56	WHITE SPRUCE / <i>Picea glauca</i>	30CM	GOOD
60	MANITOBA MAPLE/ <i>Acer negundo</i>	18CM	GOOD
60	MANITOBA MAPLE/ <i>Acer negundo</i>	29CM	GOOD-MINOR LOWER UMB DIEBACK
67	WHITE SPRUCE / <i>Picea glauca</i>	28CM	GOOD
72	CRABAPPLE/ <i>Malus spp.</i>	17, 10CM	FAIR
75	ASH / <i>Fraxinus spp.</i>	30CM	POOR
76	RED PINE/ <i>Pinus resinosa</i>	21CM	GOOD
77	RED PINE/ <i>Pinus</i>	22CM	FAIR
78	WHITE CEDAR/ <i>Thuja occidentalis</i> .		POOR

TREES TO BE REMOVED IN PHASE 1				
NO.	SPECIES	SIZE (DBH)	HEALTH + CONDITION	
46	WHITE SPRUCE / <i>Picea glauca</i>	27CM	DEAD	
57	ASPEN / <i>Populus</i> spp.	18-16CM	DEAD	DOUBLE STEM
59	MANITOBA MAPLE / <i>Acer negundo</i>	26,28, 23,30CM	GOOD/FAIR	SUSCEPTIBLE TO TRUNK ROT
61	MANITOBA MAPLE / <i>Acer negundo</i>	26CM	POOR-LARGE SNAPPED	SMALL SAFETY HAZARD
62	PAPERBIRCH / <i>Betula papyrifera</i>	28, 29CM	SUSCEPTIBLE STEM/ROT	SNAPPED UPPER LIMBS, DAMAGED BARK
63	NORWAY MAPLE / <i>Acer platanoides</i>	39CM	GOOD	
64	NORWAY MAPLE / <i>Acer platanoides</i>	28CM	GOOD	
65	NORWAY MAPLE / <i>Acer platanoides</i>	30CM	GOOD	
66	NORWAY MAPLE / <i>Acer platanoides</i>	30CM	GOOD	
68	ASH / <i>Fraxinus</i> spp.	30CM	POOR	
69	ASH / <i>Fraxinus</i> spp.	36CM	POOR	
70	ASH / <i>Fraxinus</i> spp.	28CM	POOR	
71	ASH / <i>Fraxinus</i> spp.	37CM	POOR	
73	RED PINE/ <i>Pinus resinosa</i>	25CM	FAIR	
74	RED PINE/ <i>Pinus resinosa</i>	27CM	GOOD	