

GENERAL NOTES FOR GRADING

1. ALL GROUND SURFACES SHALL BE EVENLY GRADED WITHOUT PONDING AREAS AND WITHOUT LOW POINTS EXCEPT WHERE APPROVED SWALE OR CATCH BASIN OUTLETS ARE PROVIDED.

2. GRADING IN GRASSED AREAS WILL BE BETWEEN 2% TO 7%. GRADES IN EXCESS OF 7% WILL REQUIRE A MAXIMUM 3:1 TERRACING.

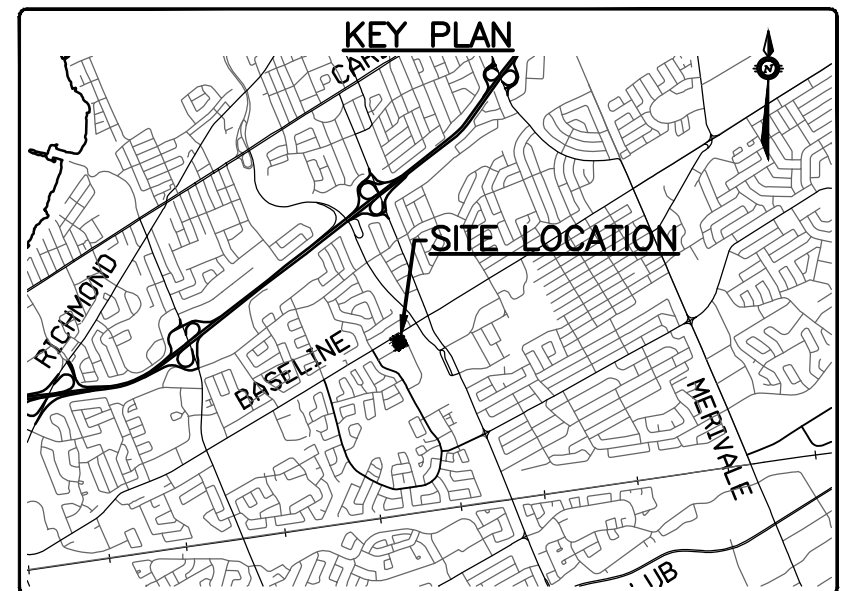
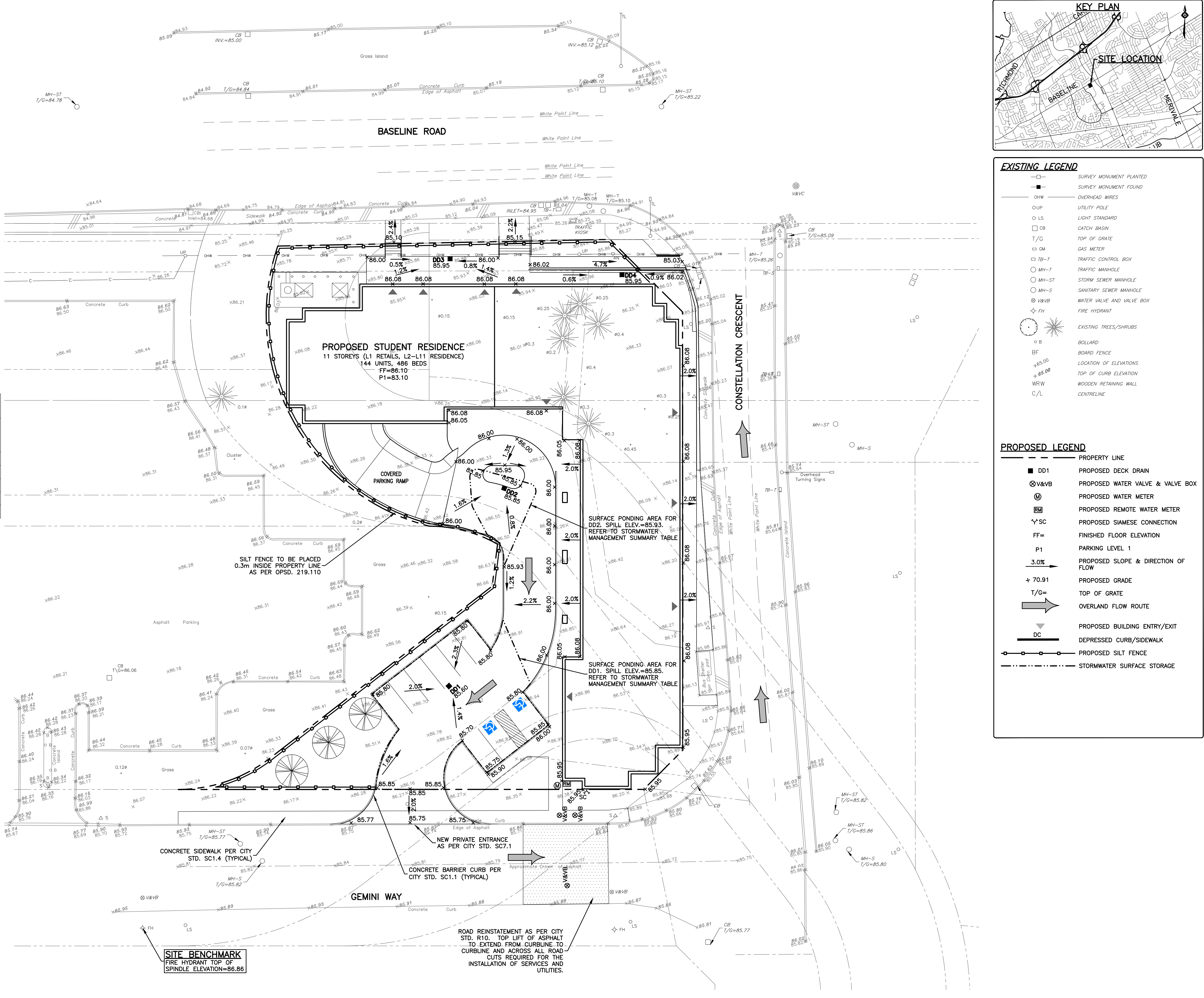
EROSION AND SEDIMENT CONTROLS DURING CONSTRUCTION

DURING ALL CONSTRUCTION ACTIVITIES, EROSION AND SEDIMENTATION SHALL BE CONTROLLED BY THE FOLLOWING TECHNIQUES:

1. LIMIT THE EXTENT OF EXPOSED SOILS AT ANY GIVEN TIME.
2. RE-VEGETATION OF EXPOSED AREAS AS SOON AS POSSIBLE.
3. MINIMIZATION OF AREA TO BE CLEARED AND DISRUPTION TO ADJACENT AREAS.
4. INSTALLATION OF FILTER CLOTH BETWEEN FRAME AND COVER ON ALL PROPOSED CATCH BASINS AND MANHOLES.
5. A VISUAL INSPECTION SHALL BE COMPLETED DAILY ON SEDIMENT CONTROL DEVICES AND ANY DAMAGE REPAIRED IMMEDIATELY. CARE WILL BE TAKEN TO PREVENT DAMAGE DURING CONSTRUCTION OPERATIONS.
6. IN SOME CASES SOME DEVICES MAY BE REMOVED TEMPORARILY TO ACCOMMODATE THE CONSTRUCTION OPERATIONS. THE AFFECTED DEVICES WILL BE REINSTITATED AT NIGHT WHEN CONSTRUCTION IS COMPLETED.
7. THE SEDIMENT CONTROL DEVICES WILL BE CLEANED OF ACCUMULATED SILT AS REQUIRED. THE DEPOSITS WILL BE DISPOSED OF AS PER THE REQUIREMENTS OF THE CONTRACT.
8. DURING THE COURSE OF CONSTRUCTION IF THE ENGINEER BELIEVES THAT ADDITIONAL PREVENTION METHODS ARE REQUIRED TO CONTROL EROSION AND SEDIMENTATION, THE CONTRACTOR WILL INSTALL ADDITIONAL METHODS AS REQUIRED TO THE SATISFACTION OF THE ENGINEER.
9. CONSTRUCTION AND MAINTENANCE REQUIREMENTS FOR EROSION AND SEDIMENT CONTROLS TO COMPLY WITH ONTARIO PROVINCIAL STANDARD SPECIFICATION (OPSS) 805, AND CITY OF OTTAWA SPECIFICATIONS.
10. ENTIRE SITE TO BE PROTECTED WITH TEMPORARY FENCING DURING CONSTRUCTION AS PER OPSS, 219.110

STORMWATER MANAGEMENT SUMMARY

CONTROL LOCATION	MAX FLOW (L/s)	STORAGE REQUIRED (m ³)	MAX HEAD (m)	ICD MANUF.
UPPER ROOF AREA	9.5	56.0	0.15	WATTS ACCUTROL
MAIN ENTRANCE CANOPY ROOF AREA	1.9	4.8	0.15	WATTS ACCUTROL
LOWER ROOF AREA	2.2	5.5	0.15	WATTS ACCUTROL
DECK DRAIN 1 (DD1)	4.0	21.0	0.25	WATTS ACCUTROL
DECK DRAIN 2 (DD2)	4.0	5.0	0.15	WATTS ACCUTROL



Files: C:\Users\jgordon\OneDrive\Documents\21403\baseline - mstrcraft\21403\02\plan\21403-grd.swg
 Last Saved: 5/24/2018 2:25:42 PM | Last Printed: 5/24/2018 8:50:19 AM | Printed by: bobas
 Reference: exp-services.com | www.tpsd.tpsd.org | www.ottawa.ca | www.ottawa.ca | www.ottawa.ca

CAUTION
 THE POSITION OF ALL POLE LINES, CONDUITS, WATERMANS, SEWERS AND OTHER UNDERGROUND AND OVERGROUND UTILITIES AND STRUCTURES IS NOT NECESSARILY SHOWN ON THE CONTRACT DRAWINGS, AND WHERE SHOWN, THE ACCURACY OF THE POSITION OF SUCH UTILITIES AND STRUCTURES IS NOT GUARANTEED. BEFORE STARTING WORK, DETERMINE THE EXACT LOCATION OF ALL SUCH UTILITIES AND STRUCTURES AND ASSUME ALL LIABILITY FOR DAMAGE TO THEM.

NOT FOR CONSTRUCTION

REV	REVISION DESCRIPTION	DATE	BY	APPD	REV	REVISION DESCRIPTION	DATE	BY	APPD
2	ISSUED FOR SITE PLAN APPROVAL	24/05/18	SAB	BMT	1	ISSUED FOR CLIENT REVIEW	23/05/18	SAB	BMT

SCALE: 1:250
 HORIZONTAL

CLIENT
 BASELINE CONSTELLATION PARTNERSHIP INC.
 THEREBERG HOMES
 904 LADY ELLEN PLACE
 OTTAWA, ON. K1Z 5L5

exp.
 exp Services Inc.
 1-813-888-1899 | +1-613-228-7330
 305 Wellington Drive, Unit 100
 Ottawa, ON K2B 8K6
 Canada
 www.exp.com

DESIGNED BY
 JLF

REVIEWED BY
 BMT

PROJECT NO.
 OTT-00245012-AD

PROJECT
 OTTAWA STUDENT RESIDENCE
 2140 BASELINE ROAD
 OTTAWA, ONTARIO.

DATE
 APRIL 2018

DRAWING NO.
 C2

PROJECT MANAGER
 BMT

TITLE
 GRADING AND EROSION AND SEDIMENT CONTROL PLAN

APPROVED BY
 BMT