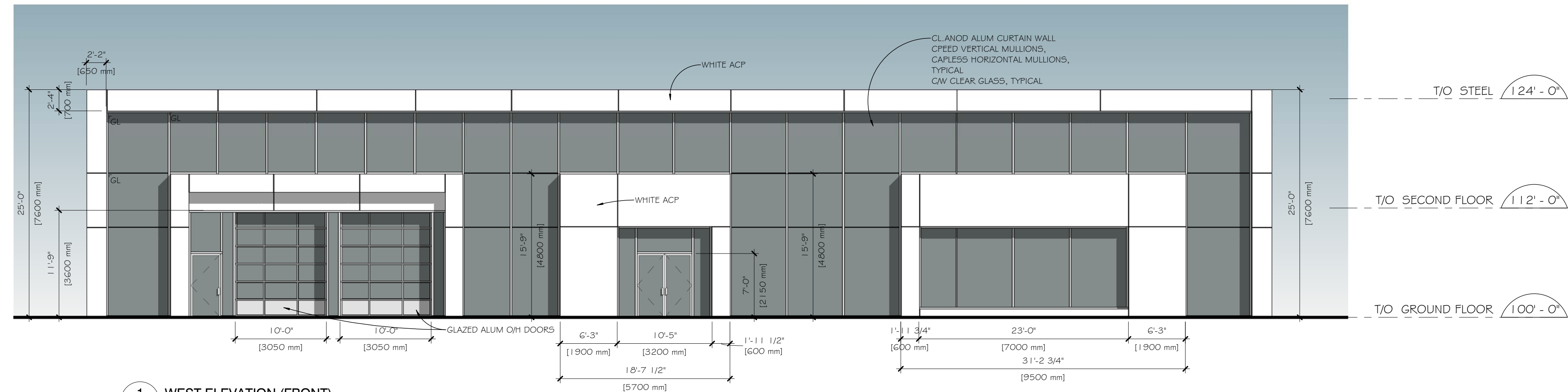
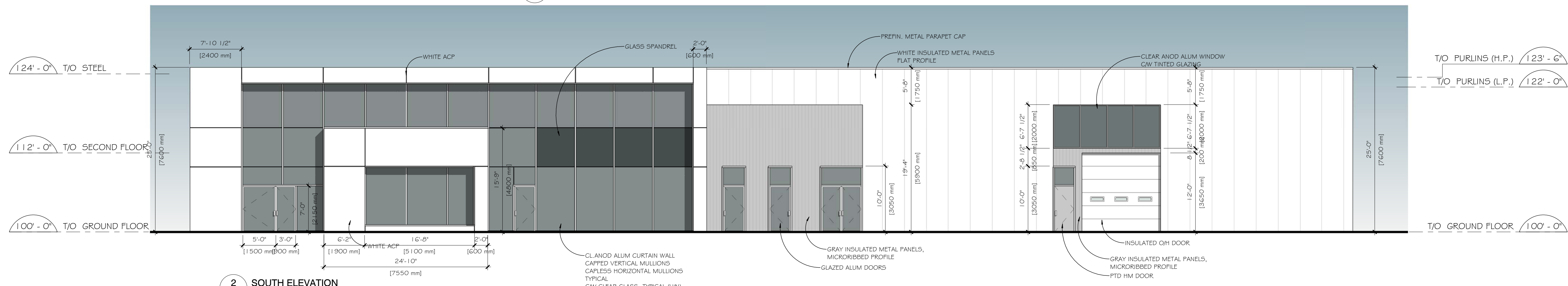


NOTES:

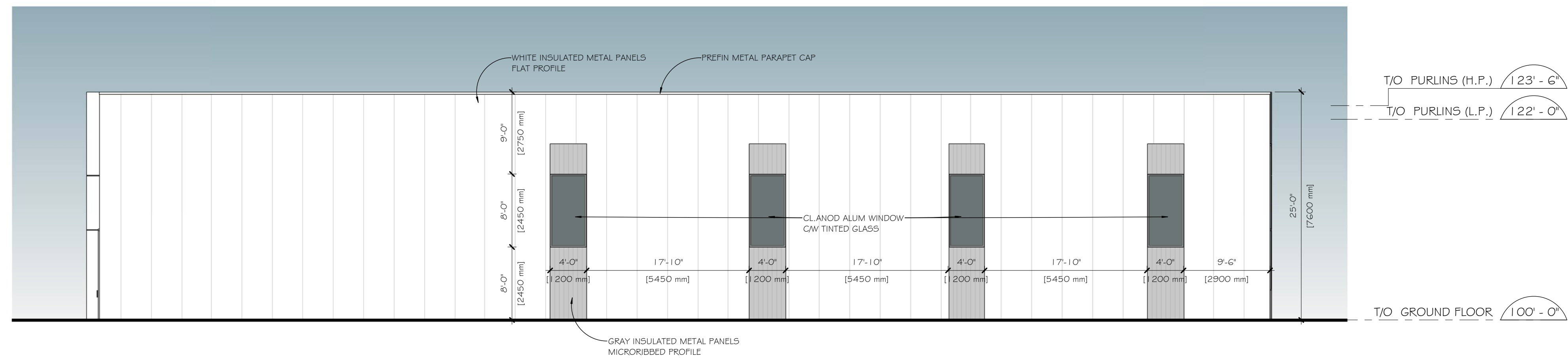
Contractor shall check and verify all dimensions on site and report any discrepancies to the Architect before proceeding.



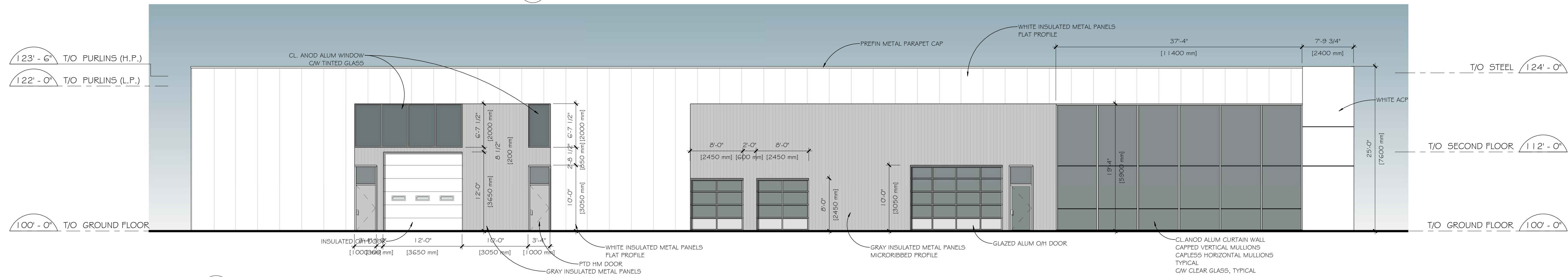
1 WEST ELEVATION (FRONT)
A200a SCALE 1 : 100



2 SOUTH ELEVATION
A200a SCALE 1 : 100



3 EAST ELEVATION
A200a SCALE 1 : 100



4 NORTH ELEVATION
A200a SCALE 1 : 100

APPROVED
By herweyero at 3:44 pm, Jun 21, 2018



DON HERWEYER, MCIP, RPP
MANAGER, DEVELOPMENT REVIEW - SOUTH
PLANNING, INFRASTRUCTURE & ECONOMIC
DEVELOPMENT DEPARTMENT, CITY OF OTTAWA

2	ISSUED FOR FINAL APPROVAL	06 JUN 2018
1	RESPONSE TO PLANNING COMMENTS	17 JAN 2018
0	ISSUED FOR SPA	15 SEP 2017
no.	revision	date

north nord



383 Parkdale Avenue, Suite 201
Ottawa Ontario Canada K1Y 4R4

KWC ARCHITECTS INC.

PHONE (613) 238-2117
FAX (613) 238-6595
E MAIL kwc@kwc-arch.com

detail no.	1	detail no.
sheet no.	A1	feuille no.

project projet

PROPOSED AUTOMOBILE DEALERSHIP

540 DEALERSHIP DRIVE OTTAWA, ON.

designed by conçu par	KWC	approved by approuvé par	
drawn by dessiné par	AK	project no. no. du projet	1732
date	15 SEPTEMBER 2017	scale	as noted

COLOUR ELEVATIONS FOR SITE PLAN APPROVAL

revision révison

sheet no. no. de la feuille

A200a

17668

plot scale 1:1