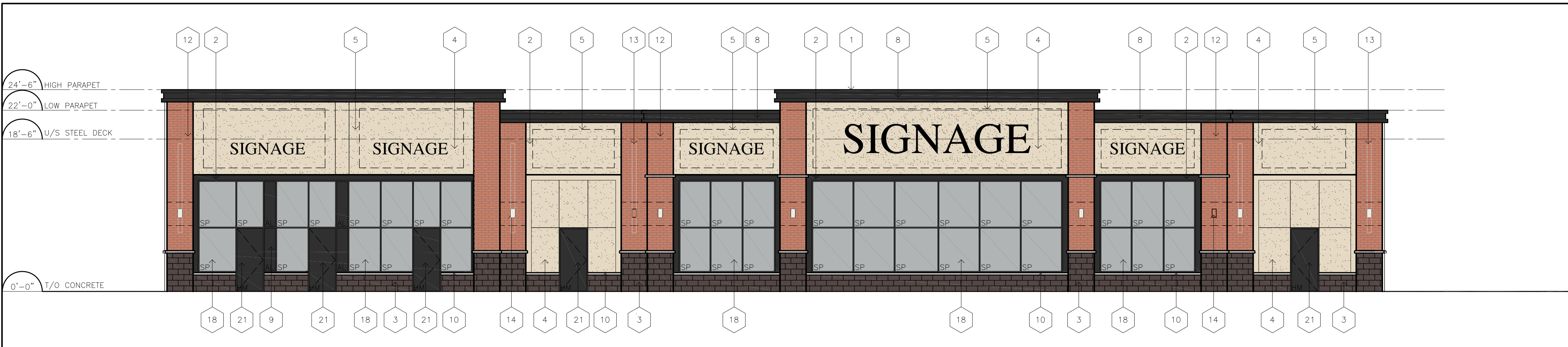




1 SOUTH ELEVATION



2 NORTH ELEVATION



3 EAST ELEVATION



4 WEST ELEVATION

LEGEND

- 1 PREFINISHED METAL FLASHING - VIOLET  
COLOUR: VW 56072 CHARCOAL
- 2 E.F.S. - DRYVIT - SANDPEBBLE  
COLOUR: BM WROUGHT IRON
- 3 CONCRETE BLOCK - PERMACON - SPLIT FACE  
COLOUR: CHARCOAL
- 4 E.F.S. - DRYVIT - SANDPEBBLE  
COLOUR: BM COLLINGWOOD
- 5 SIGNAGE:  
C/W 3/4" EXTERIOR GRADE PLYWOOD BEHIND E.F.S. FOR SIGNAGE SUPPORT,  
(FIRE RATED WHERE APPLICABLE.) FINAL CONNECTION BY TENANT ELECTRICAL  
CONTRACTOR TYP.
- 6 RESERVED:
- 7 RESERVED:
- 8 PREFINISHED METAL PARAPET CORNICE -  
COLOUR: VW 56068 BLACK
- 9 PREFINISHED METAL CLADDING -  
COLOUR: VW 56068 BLACK
- 10 CONCRETE SILL - PERMACON - BUFFED  
COLOUR: CARERA WHITE
- 11 GLAZING IN CLEAR ANODIZED ALUMINIUM FRAME
- 12 FACE BRICK - HANSON - MATT  
COLOUR: RIVERDALE
- 13 BRICK GROVE -  
150MM (W) X 75MM (D)
- 14 DECORATIVE LIGHT FIXTURE  
MOUNT TO 3/4" EXTERIOR GRADE PLYWOOD CONCEALED BEHIND WALL FINISH
- 15 STUCCO REVEAL  
16MM U-SHAPED
- 16 GLAZED DOORS & WINDOWS: (VG)  
CLEAR LOW E GLAZING IN BLACK ANODIZED THERMALLY BROKEN ALUMINIUM  
FRAMES (UNLESS OTHERWISE NOTED)
- 17 RESERVED:
- 18 SPANDREL PANEL  
GLASS SPANDREL WITH INSULATED METAL BACK PAN IN BLACK ANODIZED  
THERMALLY BROKEN ALUMINIUM FRAMES - PPG, BLACK MAGIC PPG1001-7
- 19 RESERVED:
- 20 RESERVED:
- 21 PAINTED HOLLOW METAL INSULATED DOOR  
COLOUR: CHARCOAL

LEGEND

5 A2 N.T.S.

**APPROVED**  
By Jeff McEwen at 3:48 pm, Jun 15, 2018

*Jeff McEwen*

**JEFF MCEWEN P.ENG.**  
**MANAGER, DEVELOPMENT REVIEW EAST BRANCH**  
**PLANNING, INFRASTRUCTURE & ECONOMIC**  
**DEVELOPMENT DEPARTMENT, CITY OF OTTAWA**

**BLDG. M**  
**GLA: 10,178 SF**  
**GFA: 10,328 SF**



5 KEY PLAN

N.T.S.

**Point.**  
Architects

522 Mt. Pleasant Road  
Suite 200  
Toronto, Ontario  
M4S 2M3

Tel.: (416) 440-0058  
Fax: (416) 440-1404  
mail@pointarchitects.ca  
www.pointarchitects.ca



APPROVED ☐ REFUSED ☐

THIS \_\_\_\_ DAY OF \_\_\_\_\_, 20\_\_

**JEFF MCEWEN, P.ENG., MANAGER**  
**DEVELOPMENT REVIEW EAST,**  
**PLANNING, INFRASTRUCTURE AND ECONOMIC**  
**DEVELOPMENT DEPARTMENT, CITY OF OTTAWA**

No.	ISSUE	DATE
5	REVISED FOR SPA	MAR 27/18
4	REVISED FOR SPA	MAR 07/18
3	ISSUED FOR REVIEW	FEB 13/18
2	ISSUED FOR SPA	NOV 01/17
1	ISSUED FOR REVIEW	SEP 20/17

CLIENT:

**SmartREIT**  
**(ORLEANS II) Inc.**  
**And Mer Bleue**  
**Shopping Centres**  
**Limited**

PROJECT:

**Building M**  
**2025 Mer Bleue Rd.**  
**Orleans, ON**

SHEET TITLE:

**BUILDING**  
**ELEVATIONS**

PROJECT NO.  
7034

SCALE:  
1/8"=1'-0"

DRAWN:  
KS

CHECKED:  
GP

FILE NO.  
7034

DATE:  
SEE REV.

SHEET NO:

**A2**

Mar 27, 2018 - 6:03 pm  
u:\7034 - SmartREIT - Bldgs L, M & N, Orleans\02 DWG\SPA Elevations\7034 - Bldg M Elevations 180327.dwg

**D07-12-17-0142**  
**17241**