



APPROVED  REFUSED

THIS \_\_\_\_ DAY OF \_\_\_\_\_, 20\_\_

JEFF MCEWEN, P.ENG., MANAGER  
DEVELOPMENT REVIEW EAST,  
PLANNING, INFRASTRUCTURE AND ECONOMIC  
DEVELOPMENT DEPARTMENT, CITY OF OTTAWA

No.	ISSUE	DATE
5	REVISED FOR SPA	MAR 28/18
4	REVISED FOR SPA	MAR 06/18
3	ISSUED FOR REVIEW	FEB 13/18
2	ISSUED FOR SPA	NOV 01/17
1	ISSUED FOR REVIEW	SEP 20/17

NOTE: This drawing is the property of the Architect and may not be reproduced or used without the expressed consent of the Architect. The contractor is to verify all dimensions and conditions on the project and to report any discrepancies to the Architect prior to commencing work. These drawings are not to be used for construction purposes unless indicated as "Issued for construction".

CLIENT:  
**SmartREIT  
(ORLEANS II) Inc.  
And Mer Bleue  
Shopping Centres  
Limited**

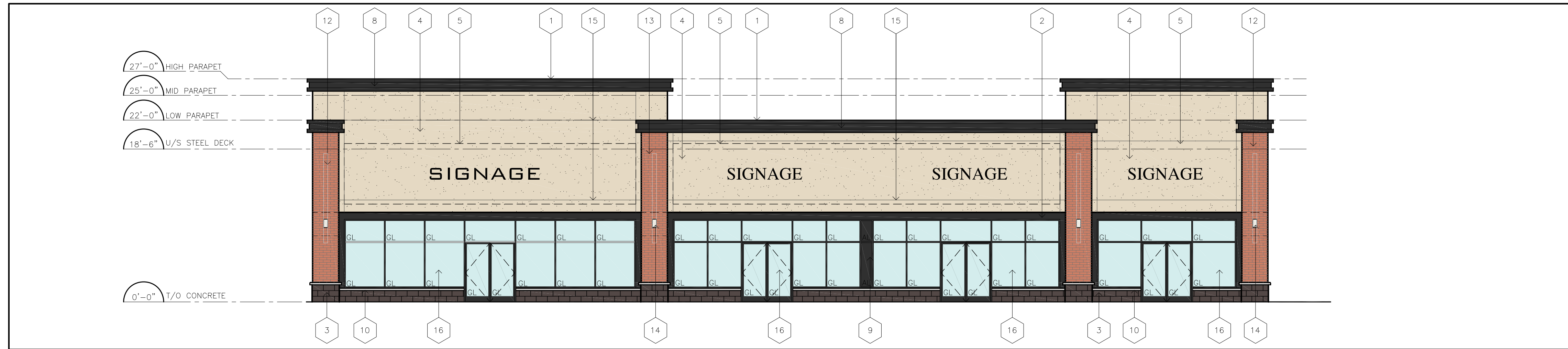
PROJECT:  
**Building L  
2025 Mer Bleue Rd.  
Orleans, ON**

SHEET TITLE:  
**BUILDING  
ELEVATIONS**

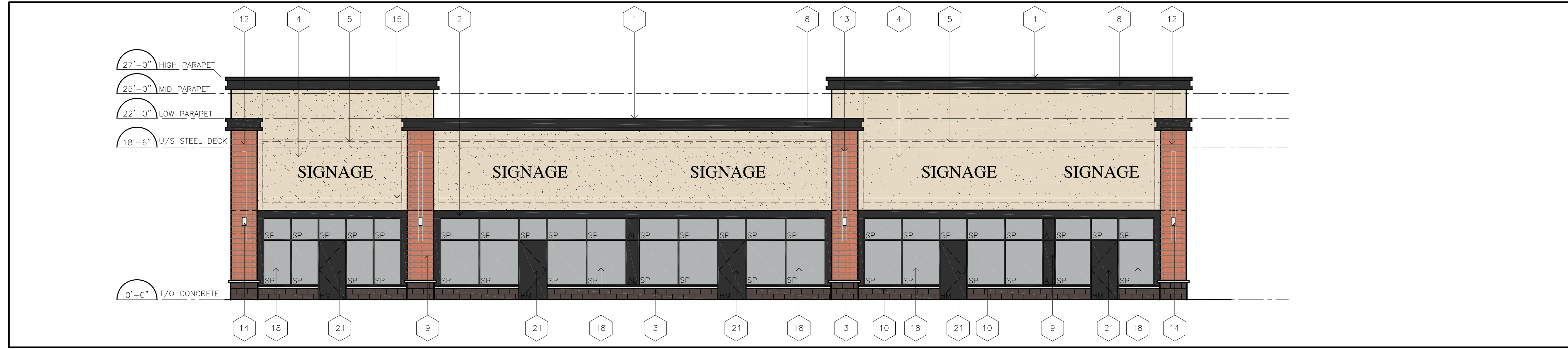
PROJECT NO. 7034	
SCALE: 1/8"=1'-0"	DATE: SEE REV.
DRAWN: KS	SHEET NO: <b>A1</b>
CHECKED: GP	
FILE NO. 7034	

- ### LEGEND
- 1 PREFINISHED METAL FLASHING - VCWEST  
COLOUR: VW 56072 CHARCOAL
  - 2 E.I.F.S. - DRYVIT - SANDPEBBLE  
COLOUR: BM WROUGHT IRON
  - 3 CONCRETE BLOCK - PERMACON - SPLIT FACE  
COLOUR: CHARCOAL
  - 4 E.I.F.S. - DRYVIT - SANDPEBBLE  
COLOUR: BM COLLINGWOOD
  - 5 SIGNAGE:  
3/4" 3/4" EXTERIOR GRADE PLYWOOD BEHIND E.I.F.S. FOR SIGNAGE SUPPORT,  
(FIRE RATED WHERE APPLICABLE.) FINAL CONNECTION BY TENANT ELECTRICAL  
CONTRACTOR TYP.
  - 6 RESERVED:
  - 7 RESERVED:
  - 8 PREFINISHED METAL PARAPET CORNICE -  
COLOUR: VW 56068 BLACK
  - 9 ALUMINIUM COVER PANEL -  
COLOUR: VW 56068 BLACK
  - 10 CONCRETE SILL - PERMACON - BUFFED  
COLOUR: CARERA WHITE
  - 11 GLAZING IN CLEAR ANODIZED ALUMINIUM FRAME
  - 12 FACE BRICK - HANSON - MATT  
COLOUR: RIVERDALE
  - 13 BRICK GROOVE -  
150MM (W) X 75MM (D)
  - 14 DECORATIVE LIGHT FIXTURE  
MOUNT TO 3/4" EXTERIOR GRADE PLYWOOD CONCEALED BEHIND WALL FINISH
  - 15 STUCCO REVEAL  
16MM U-SHAPED
  - 16 GLAZED DOORS & WINDOWS: (GL)  
CLEAR LOW E GLAZING IN BLACK ANODIZED THERMALLY BROKEN ALUMINIUM  
FRAMES (UNLESS OTHERWISE NOTED)
  - 17 RESERVED:
  - 18 SPANDREL PANEL  
GLASS SPANDREL WITH INSULATED METAL BACK PAN IN BLACK ANODIZED  
THERMALLY BROKEN ALUMINIUM FRAMES - PPG, BLACK MAGIC PPG1001-7
  - 19 RESERVED:
  - 20 RESERVED:
  - 21 PAINTED HOLLOW METAL INSULATED DOOR  
COLOUR: CHARCOAL

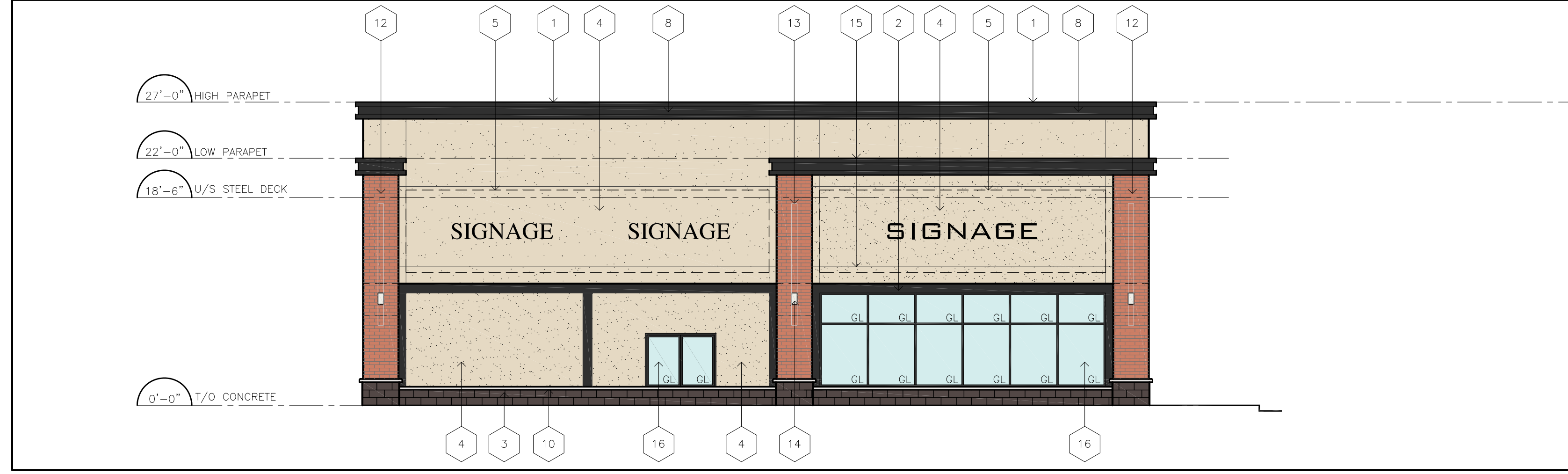
LEGEND  
N.T.S.



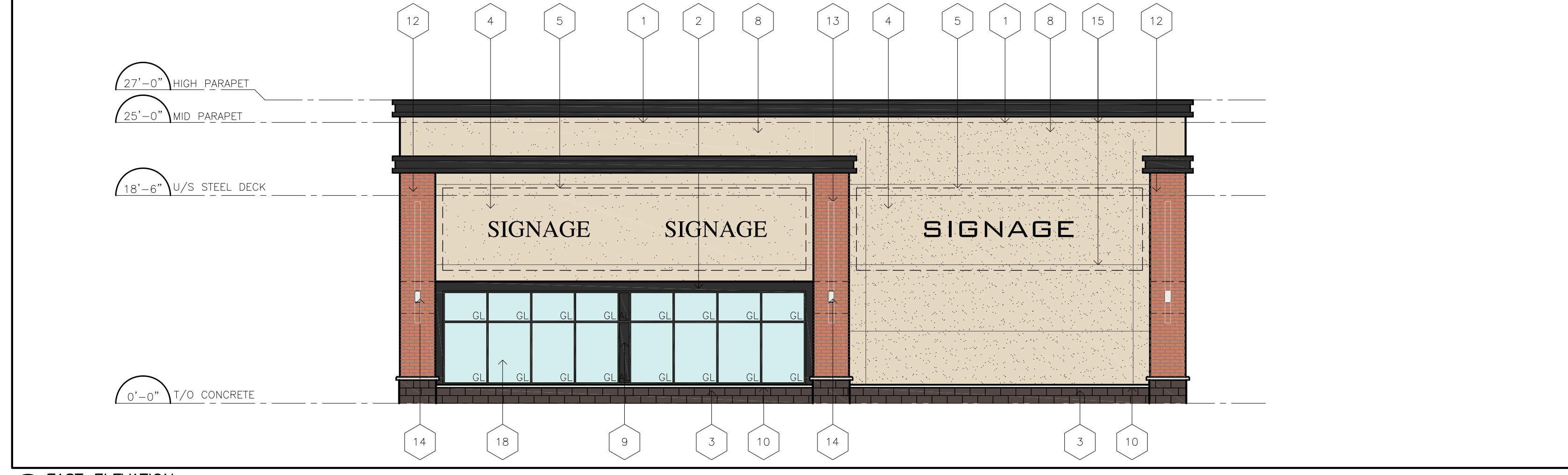
1 SOUTH ELEVATION  
N.T.S.



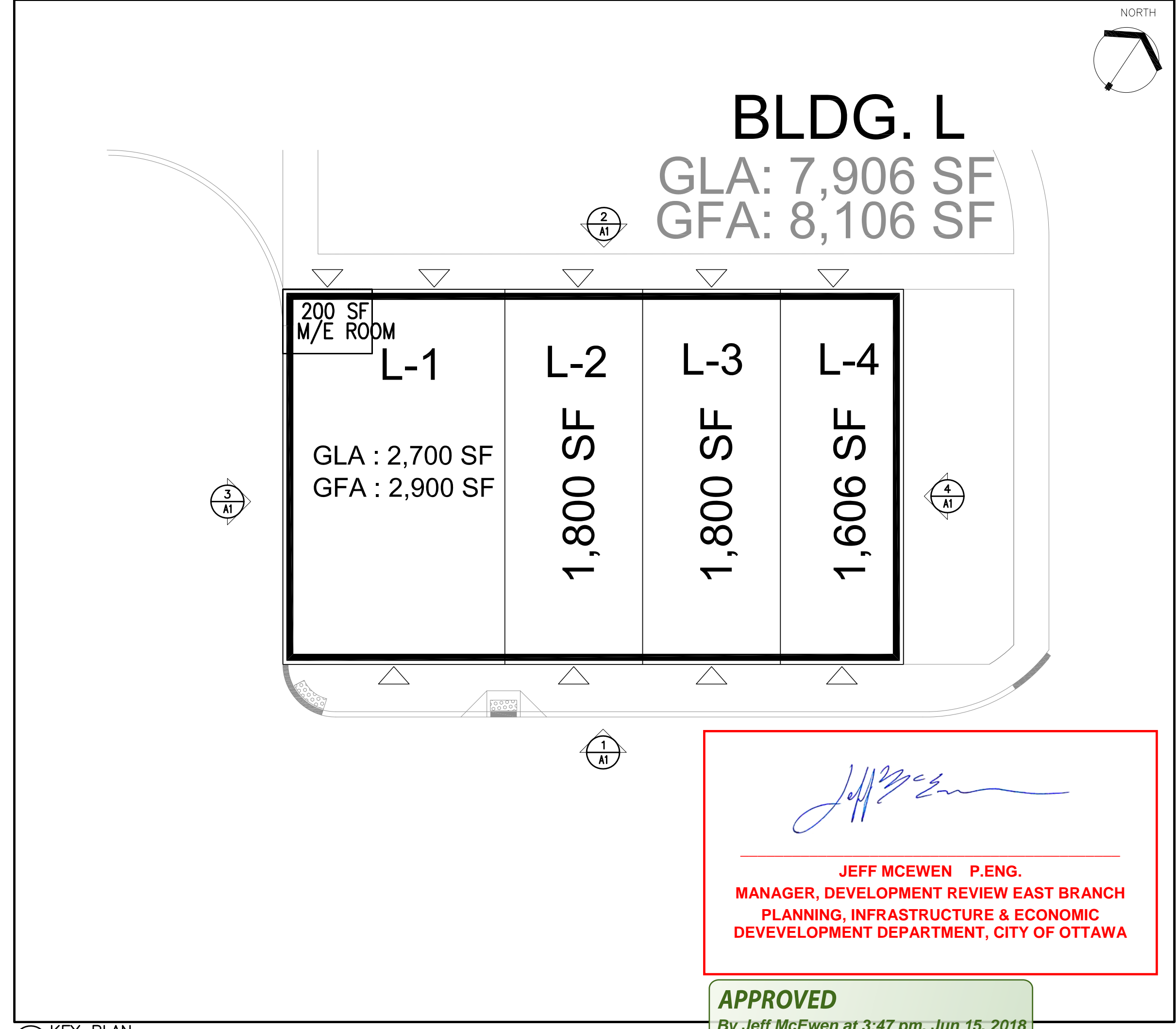
2 NORTH ELEVATION  
N.T.S.



3 WEST ELEVATION  
N.T.S.



4 EAST ELEVATION  
N.T.S.



5 KEY PLAN  
N.T.S.

*Jeff McEwen*  
**JEFF MCEWEN P.ENG.**  
MANAGER, DEVELOPMENT REVIEW EAST BRANCH  
PLANNING, INFRASTRUCTURE & ECONOMIC  
DEVELOPMENT DEPARTMENT, CITY OF OTTAWA

**APPROVED**  
By Jeff McEwen at 3:47 pm, Jun 15, 2018

D:\7034 - SmartREIT - Bldg L, M & N, Orleans\02 DWG\SPA Elevations\7034 - Bldg L Elevations 180327.dwg Mar 28, 2018 - 3:28 pm