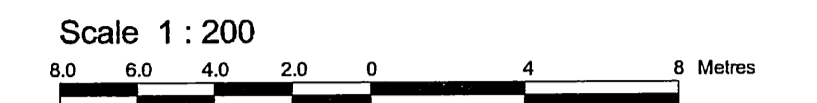


LOT 27
REGISTERED PLAN 462
CITY OF OTTAWA

Surveyed by
 Annis, O'Sullivan, Vollebek Ltd.

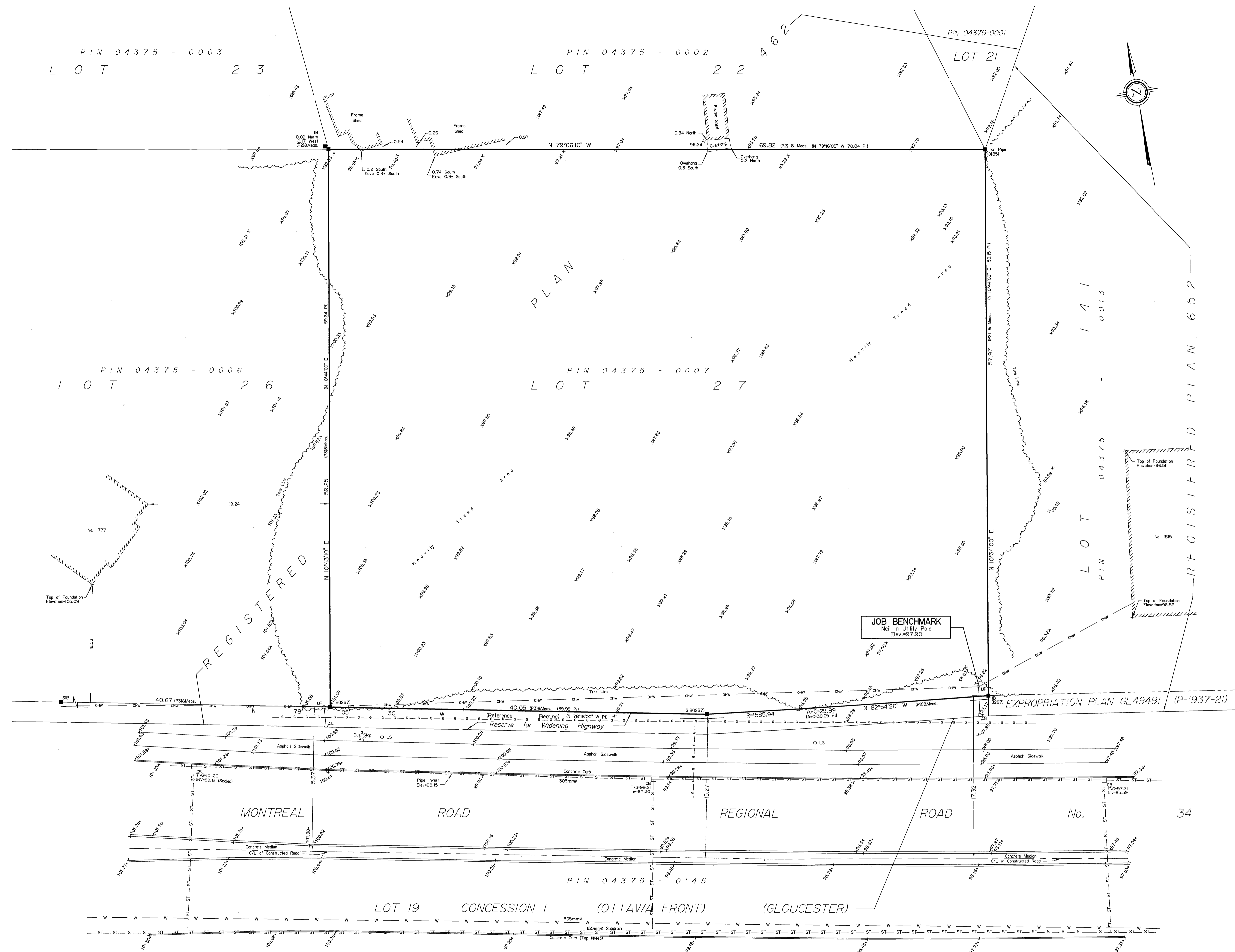


Metric
 DISTANCES SHOWN ON THIS PLAN ARE IN METRES AND
 CAN BE CONVERTED TO FEET BY DIVIDING BY 0.3048

Surveyor's Certificate

I CERTIFY THAT:
 1. This survey and plan are correct and in accordance with the
 Surveyors Act, the Surveyors Act, the Land Titles Act and the
 regulations made under them.
 2. The survey was completed on the 3rd day of September, 2008.

Sgt. 12, 2008
 Date *E. H. Herweyer*
 Ontario Land Surveyor



Notes & Legend

Denotes	
—□—	Survey Monument Planted
—■—	Survey Monument Found
SIB	Standard Iron Bar
SSIB	Short Standard Iron Bar
IB	Iron Bar
(WIT)	Witness
Meas.	Measured
(AOG)	Annis, O'Sullivan, Vollebek Ltd.
(P1)	Registered Plan 462
(P2)	Surveyor's Real Property Report by (1287), dated July 29, 2003
(P3)	Surveyor's Real Property Report by (1287), dated June 30, 2005
(P4)	Building Location Survey by (1175), dated March 5, 1985
—ST—	Underground Storm Sewer
—W—	Underground Water
—G—	Underground Gas
—OHW—	Overhead Wires
□ CB	Catch Basin
△ S	Sign
○ UP	Utility Pole
○ AN	Anchor
○ LS	Light Standard
+ 65.00	Location of Elevations
+ 65.00'	Location of Elevations (Top of Curb/Median Noted)
T/G	Top of Grate
C/L	Centreline
Inv.	Invert
—	Property Line

ASSOCIATION OF ONTARIO
 LAND SURVEYORS
 PLAN SUBMISSION FORM
 1711351

THIS PLAN IS NOT VALID UNLESS
 IT IS AN EMBOSSED ORIGINAL
 COPY ISSUED BY THE SURVEYOR
 In accordance with
 Regulation 1026, Section 29 (3).

SITE AREA = 4148 m²

Bearings are astronomic, derived from the northerly limit of Montreal Road, shown to be N 78°05'30" W, on a Surveyor's Real Property Report by (1287), dated July 29, 2003

ELEVATION NOTES

1. Elevations shown are referred to geodetic datum.
 2. It is the responsibility of the user of this information to verify that the job benchmark has not been altered or disturbed and that its relative elevation and description agrees with the information shown on this drawing.

UTILITY NOTES

1. This drawing cannot be accepted as acknowledging all of the utilities and it will be the responsibility of the user to contact the respective utility authorities for confirmation.
 2. Only visible surface utilities were located.
 3. A field location of underground plant by the pertinent utility authority is mandatory before any work involving breaking ground, probing, excavating etc.
 4. Underground utility services are taken from Surveyor's Real Property Report by (1287), dated July 29, 2003 and City of Ottawa Engineering drawing R-1534-6 sheet 6 of 32.

ANNIS, O'SULLIVAN, VOLLEBEK LTD.
 14 Concourse Gate, Suite 500
 Nepean, Ont. K2Z 7S6
 Phone: (613) 727-0850 / Fax: (613) 727-1079
 Email: nepean@annisvollebek.com

Ontario Land Surveyors
 300 No. 9489-09 Woodman L127 R1462 TOPO 01 ml